

# HOLBEN BUILDING CORP

2765 S. Colorado Blvd., #102 Denver Colorado 80222  
303-758-4272 fax 303-758-4282

[www.holbenhomes.com](http://www.holbenhomes.com)

[www.holbencommercial.com](http://www.holbencommercial.com)

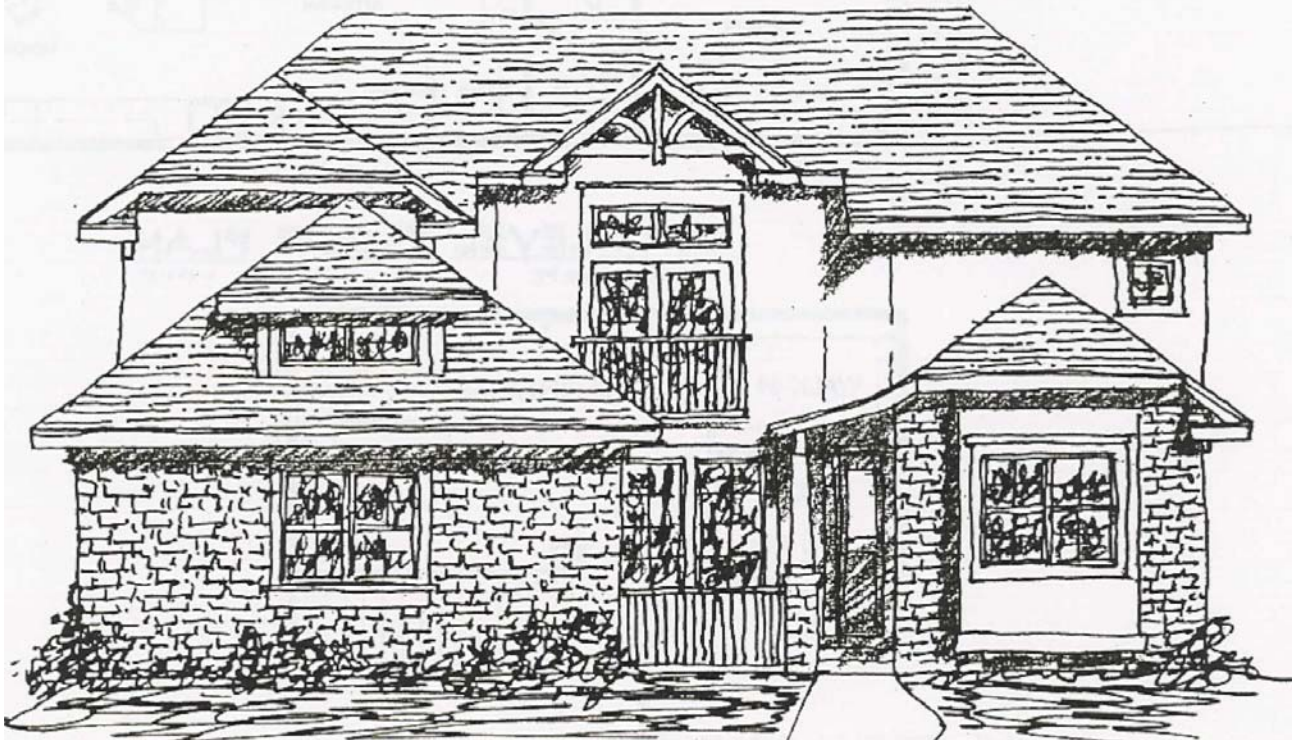
MEMBER HOME BUILDER'S ASSOCIATION OF METROPOLITAN DENVER

*Building Denver since 1977*

## Presenting the new 3070 S. Jackson St.

One of Denver's most enduring builders is transforming this address into the true, one-of-kind custom home you see here. Features include a main floor master suite, study, two amazing fireplaces, a large private side entry garage, a garden courtyard and two more living suites, a loft and 2<sup>nd</sup> laundry upstairs. Living area is 3,262 s.f. finished, with a 2,265 s.f. basement for a total area of over 5,500 s.f.; and then there is attic storage over the garage! Lots of stonework and natural finishes that are included will make the home easy for living from the first day.

**See the completed plan program on the back.**

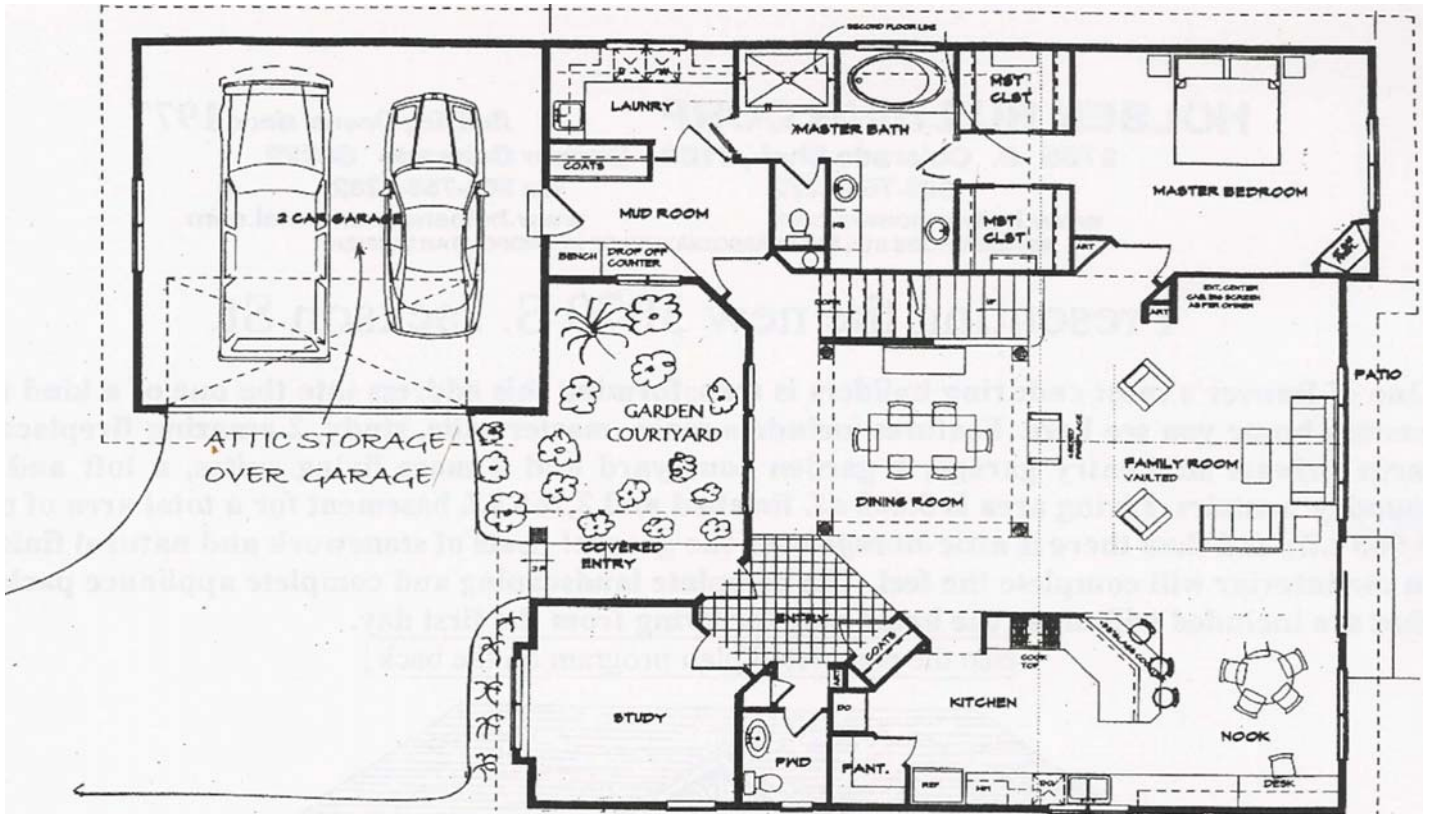


**\$918,000**

**Contact the builder or your broker  
Watch for it soon in MLS**

**This home is located in the Slavens school district and is in close proximity to many of the best private schools in Denver. Cherry Creek, I-25, DTC, downtown and light rail are minutes away. Dartmouth Avenue is part of one of the largest bicycle trail networks in the world. Stroll to the Wellshire Inn for dinner or golf.**

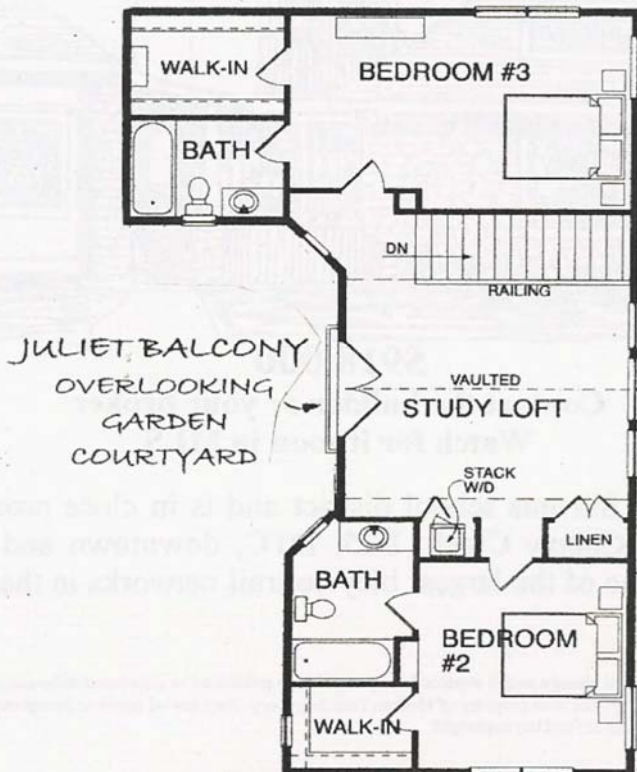
NOTICE: Information contained herein is subject to change and is superceded by any future published or expressed information, a contractual relationship that may be established or action of the owner. Plans are copyrighted and are the sole property of Holben Building Corp. Any use of plans or interpretive marketing literature by others without the written permission of the owner is illegal and the owner will defend the copyright.



**MAIN LEVEL FLOOR PLAN**

2269.65 SQ. FT.

1/4" = 1'-0"



**UPPER LEVEL FLOOR PLAN**

995.65 SQ. FT.

1/4" = 1'-0"

ARCHITECTURE BY  
**DENNIS SCHLACHTER**  
**DSDA ARCHITECTS**