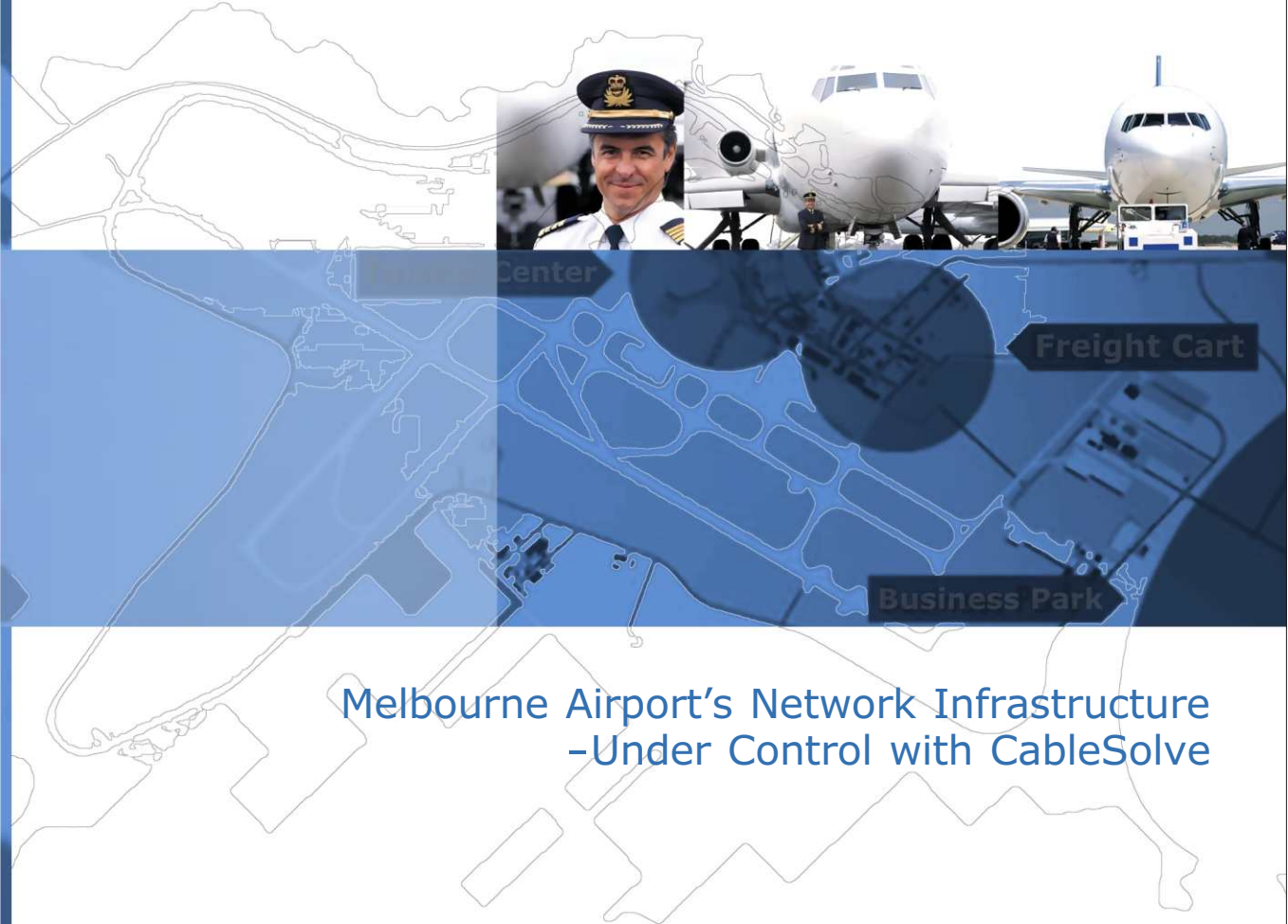


A Case Study



Melbourne Airport's Network Infrastructure
-Under Control with CableSolve

OVERVIEW

Melbourne Airport

Melbourne Airport is the second largest airport in Australia, handling 19 million passengers and 165,000 flights per year. Melbourne Airport aims to be the leading airport company in the Asia Pacific Region while realising the airport's potential in providing safe, secure and efficient services, providing quality customer service and taking advantage of opportunities for growth and development.

Melbourne Airport has won numerous passenger and industry awards and has been ranked as one of the world's top 5 airports by IATA. Passengers in Business Traveller Magazine have voted it five times as one of the top 10 airports in the world.

- **around 450 flights and over 50,000 passengers using the airport everyday**
- **over 10,000 airport workers working for many different companies**
- **over 150 on-site businesses**



Melbourne Airport

Type of Business:

- Airline /Building Management

Number of Employees:

- Over 10,000 airport workers

IT Scope:

- 40-50 servers
- Over 15,000 managed ports

Product Used:

- CableSolve -Connectivity and Infrastructure Management Software

Top Issues:

- The airport is a relatively complex site with around 180 buildings
- The cabling and network records are not up-to-date
- Moves, Adds and Changes (MAC) take 2.5 days to complete
- The need to avoid downtime which could affect airport operations

Realised Benefits:

- Completely accurate and available documentation, including data & electrical connectivity
- Decreased the time taken to perform a MAC by up to 60%
- Faster problem identification and resolution
- Improved productivity and service levels from IT staff and contractors
- Optimised utilisation of hardware & software assets
- Significantly reduced likelihood of downtime



What Melbourne Airport Needed

For an airport, avoiding downtime is critical. A single flight monitor that is out of action can delay passengers getting to a flight gate, potentially costing the airlines and airport thousands of dollars because of delays. Downtime can mean flight delays and passenger dissatisfaction due to its effect on IT and flight information systems.

Mark also needed to improve:

- ➔ **The connectivity and infrastructure records and information; moving them from people's heads into a system and ensuring that the records are always up-to-date.**
- ➔ **The visibility of equipment, its location and utilisation, in short - IT asset management.**
- ➔ **The ability to plan work on the infrastructure before starting.**
- ➔ **The cost and time it was taking to rectify incorrect cable patching.**

After deciding to upgrade portions of their structured cabling system, Melbourne Airport wanted an infrastructure management system that could manage the diverse equipment and physical network.

Melbourne Airport was looking for a solution that would manage everything they had including their telephone and data networks and all the kinds of cabling installed at the airport including optical, copper, coaxial, even security and power connections. The size of the airport required a management system that would give them mobility and portability of all the records as well as the capability to do regular audits to check for discrepancies in their network connectivity. Any chosen system would have to be able to scale to support all 180 buildings that are part of the airport cabling system.

More importantly, the system chosen needed to be able to bring together all required information into a centralised database to provide access to other relevant internal departments.

Melbourne Airport's IT and Infrastructure Challenges

Melbourne Airport is a relatively complex site with around 180 buildings. The data cabling system has to support the entire airport operation infrastructure as well as that of other airlines and businesses.

Network services used by the airport include the traditional voice and data services as well as video and data for flight information, display panels and security related systems.

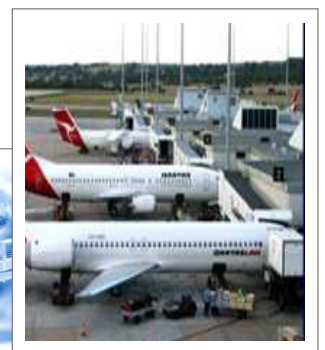
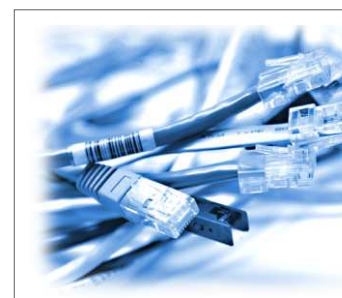
Melbourne Airport is in the process of upgrading the cabling infrastructure to Category 6 pair manageable copper cabling and new fibre optic and modular patching.

Connectivity and Infrastructure Management

Until the implementation of CableSolve, the IT group managed the cabling system using paper records with HP Open View supplementing the paper records by monitoring the logical network. With HP Open View, the IT group only saw what equipment was connected to each switch port. However, it provided no information about the physical layer, the details of the equipment nor cabling paths or locations.

The lack of detailed record meant it was quite common to spend days trying to trace cable paths for data and electrical circuits before performing a Move, Add or Change (MAC).

According to Mark Funston, the Systems Manager for Melbourne Airport, a MAC could take up to two and a half days to complete. As expected, the paper records proved almost impossible to keep up-to-date.



CableSolve -The Chosen Solution

Like many large cabling installations, the infrastructure is spread over a very large area, making the **portability** of CableSolve an important feature. Portability provides network engineers full off-line access to all the connectivity and infrastructure records no matter where they are. This includes floor plans of the buildings which makes locating equipment simple.

Melbourne Airport wanted a system that will be able to show them what equipments connected to what and via what channel. CableSolve was able to address that need because it fully supports **end-to-end management** of the entire connectivity channel.



CableSolve has the ability to show the various links and end-points regardless of the number of buildings, equipment or cables. The use of integrated network detection and its capability to use SNMP means CableSolve can automatically identify devices connected to the network and alert the network staff if they move.

The use of barcodes and a Pocket PC with total off-line access and a barcode scanning engine made record keeping quick and painless.

One side benefit to Mark has been the documentation of all the electrical connections in the main airport building. With CableSolve, Mark now has access to full data and electrical connectivity information for all equipment.

Regarding CableSolve:

“Not having the information and knowledge on a piece of paper or in somebody’s head which may eventually disappear. Now you have information in the CableSolve System and it’s there when you need it.”

**- Mark Funston
Airport Systems Manager**

Benefits Realised by Melbourne Airport

The IT group of Melbourne Airport has assurance that their records are accurate, dependable and readily available. Unlike before, there is no more need to run around looking for things. There is a noted improvement in the productivity and the service levels of the IT staff. Assets are utilised better; finding assets that are lost or unaccounted for like unused data and voice ports and equipment is much easier. The IT staff knows that if down time does occur they are able to determine the cause of the failure quickly and can begin solving the problem fast with CableSolve.

When asked what key benefit was derived from CableSolve:

“Ease of use and having the data with us, being able to have it on the Pocket PC is really good. It is portable. You can go down there, you can do the changes and put the changes straight into the system, rather than having somebody write it down on a piece of paper, take it away and take it back up to the office and perhaps lose it or forget to enter the information in the system.”

**- Mark Funston
Airport Systems Manager**

With CableSolve, the IT group has been able to move from an inaccurate paper based system, to an up-to-the-second accurate database system with records available whenever and wherever required, even when off site.



The Future

With CableSolve managing Melbourne Airport's connectivity and infrastructure, the airport is looking towards the use of CableSolve in additional buildings and areas.

Melbourne Airport assures its customers and employees of uninterrupted 24-hour operation, enabling people and freight to arrive just in time, anywhere in the world.

Cormant Technologies ensures its users that it will continue to innovate CableSolve with product upgrades that are based on customer needs and exceed customer expectations while complying with the latest performance standards.

Into the future, the CableSolve System will become even more efficient, useful and promises to make cabling and infrastructure management an easy task.

About Cormant Technologies

Cormant Technologies Inc. is an Information, Communication and Technology Management Company that specialises in the development, marketing and support of Infrastructure Management Software.

Contact Us

For more information on CableSolve, contact us via e-mail at sales@cormant.com. For sales or inquiries, call our international toll free number: +800 CORMANT1 (+800 2676 2681*) or globally at +63 2 814 5188

**Substitute your international dialing code (IDD code) for the + symbol.*

www.cormant.com

Cormant, the Cormant logo, CableSolve and the CableSolve logo are trademarks of Cormant Technologies and are registered in some jurisdictions. CableSolve is Patent Pending.

Software specifications may be subject to change without notice; some features may be optional or require additional third party software or are available at a later date. Cormant's standard license agreement is available in the software package or on request.

All other trademarks, service marks and company names used are owned by their respective owners and may be registered.

© 2002-2005 Cormant Technologies Inc.
All rights reserved. / 02/05 CSCS002 ver 2



PHILIPPINES/GLOBAL

Cormant Technologies Inc
10-04 Net One Center
Bonifacio Global City,
1634 Taguig, Metro Manila
Republic of the Philippines

Phone : +*800 CORMANT1
+632 8145188
Email : sales@cormant.com

UNITED KINGDOM

Cormant Technologies (UK) Ltd
Suite 517, 28 Old Brompton Road
London, SW7 3SS
United Kingdom

Phone : +44 20 7060 4460
Email : sales_uk@cormant.com

You may also contact our Authorised Distributors in these locations:

AUSTRALIA/NEW ZEALAND

Avantex Australasia Pty Ltd
PO Box 413
Balgowlah NSW 2093
Australia

Phone : +61 2 9907 8910
Mobile : +61 4 1829 3743
Email : randall.lumbewe@avantex.com.au

IRELAND

Wood Communications Ltd
Unit L7 Ballymount Industrial Estate
Dublin 12,
Ireland

Phone : +353 (1) 450 1898
Email : jprice@woodcomm.ie

ASEAN

The People Interface Pte Ltd
30 Meyer Road 437863
Singapore

Phone : +65 6348 5945
Email : roger.byrne@cablesolve.com

SOUTH AFRICA

Blue Turtle Technologies
34 Monte Carlo Crescent
Kyalami Business Park
Kyalami, 1685
South Africa

Phone : +27 11 267 6300
Email : sales@blueturtle.co.za
martyn@blueturtle.co.za

**Substitute your international dialing code(IDD code) for the + symbol.*