



*The Solution to Connectivity  
& Infrastructure Management*

# CableSolve

## The Need for Connectivity & Infrastructure Management

As the physical network layer and related IT infrastructure become ever more critical, they are impossible to successfully manage without assistance.

IT Managers are faced with daily infrastructure and connectivity headaches. They have to deal with documenting an ever changing environment, inefficient manual tracking of infrastructure components, downtime when problems caused by incomplete and inaccurate records occur, and time-consuming planning and execution of moves and changes.

Combined with frequent asset audits required by stricter internal controls and financial regulation, the task of managing a company's infrastructure and network can be truly daunting. There must be a better way to manage the infrastructure!

**CableSolve** is exactly the tool required to manage and control the IT environment. CableSolve can completely document the IT environment, assist when problems occur, ensure moves and changes are efficiently planned and executed, help maintain service level agreements, and track and audit the assets in the infrastructure.



---

*"Managing your IT assets effectively can reduce your IT costs by up to 40%."*  
– The Gartner Group

---

**CableSolve** is an enterprise ready Infrastructure Management System that provides portable, end-to-end management, and documentation of the IT infrastructure and network connectivity.

CableSolve combines the latest in database and interface design on the desktop with the complete flexibility of totally portable records available on any Pocket PC device. Portability ensures that records are always accessible and can be updated anywhere. CableSolve works no matter what type of infrastructure or assets exist or where the location may be. Optional barcodes and rugged Pocket PC barcode scanners make record keeping as simple as a scan.



---

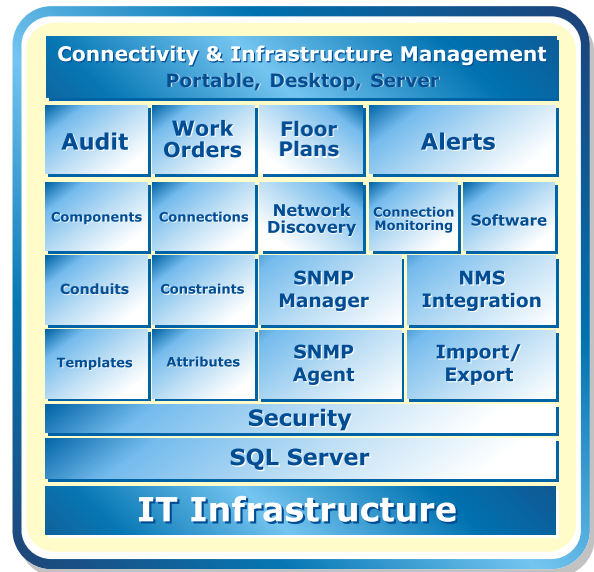
*"Cabling accounts for 50% of network issues."*  
– Infonetics Research

---

# What is CableSolve?

CableSolve is a complete package of components for connectivity and infrastructure management.

- ▶ CableSolve assists you with set-up right out of the box. Wizards, pre-defined templates and components make setting-up CableSolve intuitive and easy.
- ▶ The combination of CableSolve server, desktop and portable components provide unparalleled power and flexibility.
- ▶ Developed on a Microsoft .NET framework for reliability, scalability and ease of use.
- ▶ Full information access, including add and update, is available on the Pocket PC. Wireless access is not required.
- ▶ CableSolve is secure. It provides complete flexibility in defining users' access to the CableSolve records.
- ▶ A simple scan of a barcode with a Pocket PC allows you to immediately see the cable, port or asset and its relation to the other equipment in the network.
- ▶ As CableSolve records all IT related assets and their movements, a 100% accurate view of the infrastructure is possible for the first time.
- ▶ With Visio/CAD drawing integration in CableSolve, infrastructure and connectivity information can be seen on floor plans and is automatically kept up-to-date as asset locations are updated.
- ▶ Drag and drop work-orders are created on the desktop and are completed on the Pocket PC, to walk the users through the changes in any location.
- ▶ Conduit management provides a representation of cable pathways, including inter-building connections.
- ▶ CableSolve ensures standard compliance to ANSI/TIA/EIA 568B, ISO/IEC 11801, and CENELEC EN 50173. CableSolve confirms that the right application is connected to the right category cable and service.
- ▶ SNMP and NetBIOS monitor any asset and installed software to alert you of equipment moves or software changes.
- ▶ The Audit Module of CableSolve makes it easy to audit your infrastructure and connectivity to ensure 100% accurate information.
- ▶ Integration with industry leading NMS systems ensures that alerts and detected physical moves are never overlooked.



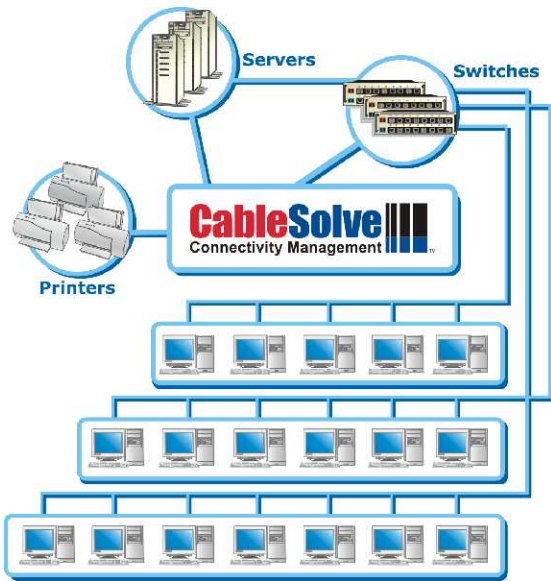
*"CableSolve is portable and active management of your network and connectivity infrastructure."*

## Business Benefits of using CableSolve

CableSolve provides real cost and resource benefits to your company.

- ▶ Increase IT staff productivity. MACs that used to take hours can now be completed in a fraction of the time.
- ▶ Significantly increase the utilisation of the infrastructure, and plan upgrades more efficiently.
- ▶ Provide management and control of all connectivity, infrastructure, and IT assets, including software. CableSolve delivers an integrated framework for managing the total infrastructure.
- ▶ Quickly resolve problems. Diagnostics and alerts help to track a problem to its root cause.
- ▶ Significantly reduce downtime due to cabling issues or human error by always having accurate records at hand.
- ▶ Improve security by tracking connectivity with network detection. CableSolve alerts you on any unauthorised changes.
- ▶ Improve audit efficiency. CableSolve makes the process quick and painless for IT and Admin staff alike.
- ▶ Present information in any format using powerful CableSolve reporting and Import/Export tools.
- ▶ Exchange information with 3rd party systems using the CableSolve API.

# With CableSolve, you can...



## Discover your Network...

with automatic network detection that tracks connectivity changes and additions and assists you in planning for network growth.

### CableSolve

- ▶ automatically interrogates network switches to discover changes in network connectivity and provides alerts when changes occur.
- ▶ detects new equipment as it is added and removed from the network.
- ▶ records full information about connected assets and provides complete information on the desktop and handheld devices.
- ▶ provides alerts when components and software are added or removed.
- ▶ automatically updates the location of an asset based on SNMP and stored connectivity information.

## Visualise your Network...

with a broad range of information and rich floor plan images that are easy to configure and maintain.

### CableSolve

- ▶ shows the exact location of assets and ports on a floor plan to save time and effort in locating assets and preventing incorrect moves, adds and changes.
- ▶ provides a floor plan on the handheld which is invaluable when troubleshooting in the field. It eliminates the need to hunt when looking for outlets.
- ▶ defines connectivity and circuit paths including building to building connections.
- ▶ automatically updates the floor plans as assets move in the database. It has an easy to use drag and drop function to move assets on the handheld and update the database.
- ▶ allows anyone familiar with Microsoft Visio to import and configure floor plans, and to export information for up-to-date printouts of the IT infrastructure. With Microsoft Excel and Visio integration combined, you get the most accurate view of your network ever.



## Track your Assets...

to show the big picture as you capture relevant asset information and exact physical locations.

### CableSolve

- ▶ records any asset information that you want to maintain using configurable templates.
- ▶ searches for assets by serial number, IP or MAC address, equipment type, floor or department or any other criteria.
- ▶ quickly tracks physical locations of assets and zooms in on the exact location in the floorplan.
- ▶ automatically updates asset locations, including the floorplans, with SNMP network discovery.

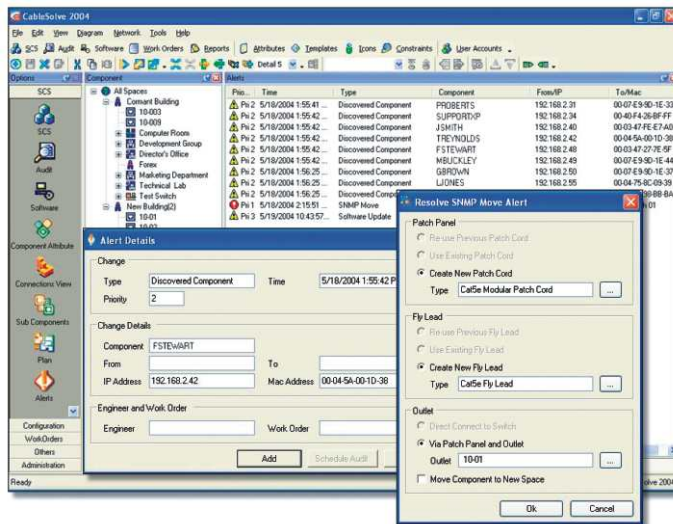


## Audit your Connectivity and Infrastructure...

with a portable device that audits as it scans to determine inaccuracies in network connections and asset records.

### CableSolve

- ▶ makes auditing as simple as scanning a barcode.
- ▶ audits connections in cabling to determine and resolve inaccuracies in the cabling records with no cable tracing required.
- ▶ allows multiple types of audit to support different departmental and operational functions with its own configurable list of templates and reports.
- ▶ determines and reports discrepancies between the infrastructure recorded in CableSolve and the actual physical assets in the facility.
- ▶ allows records from CableSolve to be imported from or exported to Excel spreadsheets or asset management systems and cable testing devices for detailed customised reports.



## Manage your Tasks...

with organised work assignment and project management.

### CableSolve

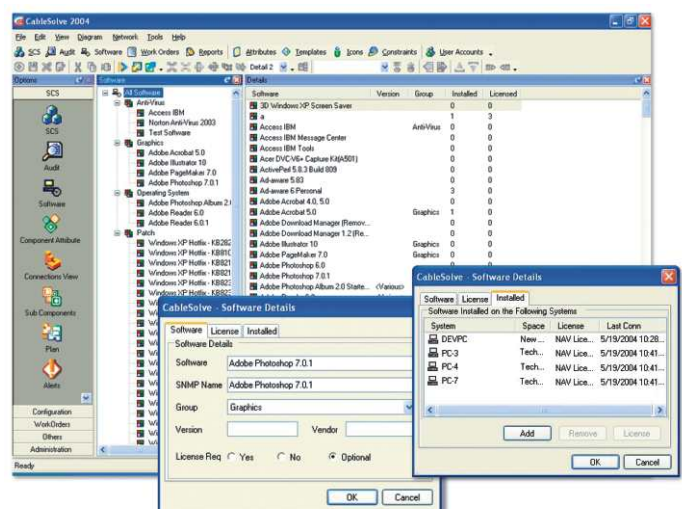
- ▶ provides and manages work-orders for efficient day-to-day task management via the desktop and Pocket PCs.
- ▶ work-orders created on the desktop are executed on the Pocket PC guiding the engineer through the changes to be made.
- ▶ allows you to reserve specific equipment and assign engineers to specific projects.
- ▶ tracks work-orders and projects to completion.
- ▶ provides full reports of infrastructure, connection, and work-orders that are useful for management, planning, and audit requirements.

## Manage your Software...

with automatic detection and alerts to ensure your software licenses are always under control.

### CableSolve

- ▶ automatically discovers newly installed and removed software.
- ▶ tracks and records all software licenses installed in each computer.
- ▶ tells you the last time a computer containing a particular software application was connected to the network.
- ▶ confirms the number of software licenses in use and provides alerts if licenses are exceeded.
- ▶ allows entry and viewing of software information including software name, version, and vendor. It also allows you to define whether a software license is mandatory, optional or not required.



# Inside CableSolve

CableSolve is independent of cabling hardware and infrastructure type and can be used with any connectivity and any infrastructure configuration or type of asset.

CableSolve can be retrofitted to any connectivity infrastructure and works with existing cabling installations regardless of cable vendor and performance type.

CableSolve supports a wide range of SNMP switches from:

• Cisco • Avaya • Nortel • 3Com • Allied Telesyn • And many others



## Server and Client



CableSolve supports compliance with installation standards ANSI/TIA/EIA 606A, EN 50174 PT2, and ISO 14763. Warnings are generated whenever connections are not compliant to ANSI/TIA/EIA 568B, ISO/IEC 11801, and CENELEC EN 50173. Using the CableSolve import module, cabling test results can be stored within the CableSolve database.

CableSolve is secure. It provides different levels of user access based on the security levels assigned to user groups.

CableSolve is future proof out of the box. It can support current and new cabling standards and communications and peripheral equipment as they are released.

The CableSolve architecture is n-tier and based on Microsoft .NET to provide scalability to support the largest enterprise environments.

CableSolve supports two installation configurations. For small sites CableSolve includes a copy of MSDE, the Microsoft desktop SQL database. For larger installation CableSolve is installed on a Windows 2000/2003 server with a SQL Server database.

The architecture of CableSolve is designed to support LAN and WAN environments, including GPRS, etc. It is possible to run desktop and Pocket PC systems remotely from the main server. Only an IP connection is required.

The Pocket PC CableSolve application supports a supplied Microsoft SQL server database for total reliability. The Pocket PC can work independently of the main database, with synchronisation using a cradle or WiFi. If WiFi is used, the Pocket PC can receive alerts, new work-orders, and synchronised changes from the CableSolve server.

## Other CableSolve Components:

### Pocket PC Scanners

CableSolve will work with almost any Pocket PC device. Symbol Technologies is our partner for the supply of portable Pocket PC devices with integrated barcode scanners. We recommend the use of the Symbol PPT 8800 or MC 50 ruggedised devices. You can use other Pocket PC devices and add barcode scanning capabilities by means of Socket Communications CF scanners for devices with Compact Flash expansion slots.

Visit the support section of our web site for more information on our recommended scanners. Symbol scanners can be supplied by our Authorised Channel Partners.

### Barcode Labels

Barcode labels are an important component of CableSolve and must be durable. We recommend the use of polyester or vinyl labels.

Visit our web site for more information on our recommended barcode labels. All required labels can be supplied by our Authorised Channel Partners.



# Straight From Our Customers



"In the short time that we have used CableSolve we have already witnessed a substantial improvement in physical asset management and network documentation. We eagerly anticipate enjoying these benefits in other DHL facilities."

**- Simon Rutter**  
Airline MIS Manager  
European Air Transport N.V./S.A, Belgium  
A DHL Company

"It was not uncommon for a data or voice connection to take up to two days to complete as the channel of connectivity had to be audited each time a MAC was required. As CableSolve was demonstrated to us, we could immediately see a solution to our problems. Now, I would estimate a MAC anywhere in the airport complex to take a maximum of 2 to 2.5 hours to complete. A big improvement from 2 days.

We are also currently using CableSolve for the tracking and management of our assets and we are delighted with the results."

**- Mark Funston**  
Airport Systems Manager  
Melbourne Airport, Australia

"This is something I have been trying to find for about 12 years. It is not core technology for us but it is a very useful tool for network management. It is not generally used for answering technological questions, it's more for logical questions such as: is the port alive and, if it is, what is at the other end? Because we are operating in a 110 cabling environment, it is very useful to be able to work out whether an outlet is connected to the phone system or to the data network. It saves us time but more importantly, it saves us from accidentally disconnecting the wrong cable. I scan the cable and it says 'yes, this is a workstation'."

**- Lyall Dawson**  
IT Manager  
Accor Asia Pacific, Australia

---

*"The ROI time after installing CableSolve is usually 10-15 months."*

---

## CableSolve Support



### Authorised Channel Partners (ACP)

CableSolve is sold via ACPs who have been fully trained to install, implement, and provide you the best possible return of your CableSolve investment.

ACPs offer complete installation and implementation services as well as on-going maintenance services. They also provide technical training to your IT staff on the day-to-day use of CableSolve.

### CableSolve Support

Authorised Channel Partners provide first line support for CableSolve. They are backed by the Sales and Support Groups at Cormant Technologies who provide world-class pre and post-sales support, including a 24-hour customer support desk.

CableSolve technical education courses are available.

### CableSolve Implementation

The cost of implementing CableSolve is calculated based on the size of installation that CableSolve will manage regardless of cabling performance, number of users accessing the system or number of Pocket PC devices.





**PHILIPPINES / GLOBAL**

*Cormant Technologies Inc  
10-04 Net One Center  
Bonifacio Global City  
1634 Taguig, Metro Manila  
Republic of the Philippines*

*Phone : +63 2 814 5188  
Email: sales@cormant.com*

**UNITED KINGDOM**

*Cormant Technologies (UK) Ltd  
Suite 517, 28 Old Brompton Road  
London, SW7 3SS  
United Kingdom*

*Phone: +44 20 7060 4460  
Email: sales\_uk@cormant.com*

**You may also contact our  
Master Distributors  
in these locations:**

**AUSTRALIA / NEW ZEALAND**

*Avantex Australasia Pty Ltd  
PO Box 413  
Balgowlah NSW 2093  
Australia*

*Phone: +61 2 9907 8910  
Mobile: +61 418 293 743  
Email:randall.lumbewe@avantex.com.au*

**IRELAND**

*Wood Communications Ltd  
Unit L7 Ballymount Industrial Estate  
Dublin 12  
Ireland*

*Phone: +353 1 450 1898  
Email:jprice@woodcomm.ie*

**ASEAN & HONG KONG**

*The People Interface Pte Ltd  
30B Meyer Road  
Singapore 437863*

*Phone : +65 6348 5945  
Email: roger.byrne@cablesolve.com*

**SOUTH AFRICA**

*Blue Turtle Technologies  
34 Monte Carlo Crescent  
Kyalami Business Park  
Kyalami, 1685  
South Africa*

*Phone : +27 11 267 6300  
Email: sales@blueturtle.co.za  
martyn@blueturtle.co.za*



## About Cormant Technologies

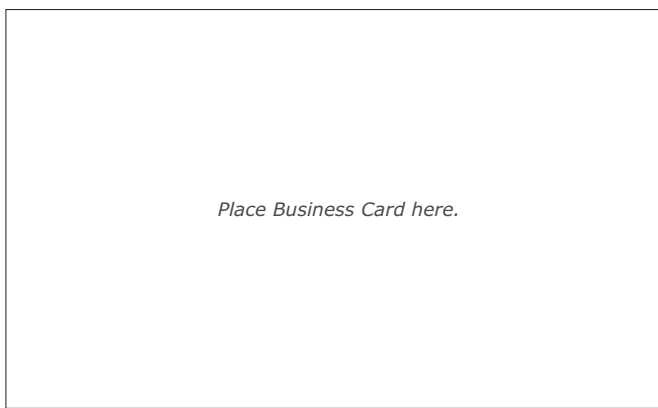
Cormant Technologies Inc is an Information, Communication, and Technology Management Company that specialises in the development, marketing, and support of Infrastructure Management Software.

## Contact Us

For more information on CableSolve, contact us via e-mail at sales@cormant.com.

For sales or inquiries, call our international toll free number: +800 CORMANT1 (+800 2676 2681\*) or +63 2 814 5188.

\*Substitute your international dialling code (IDD code) for the + symbol.



## Learn more about CableSolve:

Visit our website at [www.cablesolve.com](http://www.cablesolve.com)

Cormant and the Cormant logo and CableSolve and the CableSolve logo are trademarks of Cormant Technologies Inc and these marks are registered in some jurisdictions. CableSolve is Patent Pending.

Software specifications may be subject to change without notice; some features may be optional or require additional third party software or are available at a later date. Cormant software is offered subject to Cormant's standard license agreement available in the software package or on request.

All other trademarks, service marks and company names used are owned by their respective owners and may be registered.

© 2002 - 2005 Cormant Technologies Inc. All rights reserved.

CS 2004.00.28 / 03/05 CSB007 / V5