

# The Powerful Playstation 2 Repair Guide

Put the Power in Your Hands

Dear Friend,

Thanks for your interest in the Playstation 2 Repair Guide. I want to explain what my guide is all about, and why it is the best way for you to go on getting your Playstation 2 working again. What my guide will do for you is this- It will give you **EASY** step by step instructions with lots of pictures that will show you how to repair the most common PS2 problems. I know that you may be a little hesitant to buy the guide because you feel that the process may be too difficult for you. Let me assure you that **ANYBODY** can do it-**INCLUDING YOU!**

My philosophy is this- If it can't be **QUICKLY** and **EASILY** fixed then get rid of it and move on. A new Playstation 2 costs only \$149.00 so there is **NO WAY** you should consider paying the \$120.00 wanted by some repair shops to fix your PS2. So, that is what the second part of my guide is all about. If the guide fails to help you **quickly** and **easily** fix your PS2 then the second part will teach you and show you step by step how to get rid of your broken one and get a working one for less than the cost of having a repair done -**A LOT LESS!**

If you absolutely feel that you have to get your console repaired at a repair facility then the guide can help you there too. We have a special deal with one of the nation's top repair facilities. They will give all of the PS2 Repair Guide owners a \$10.00 discount off their normal rates. So, if you decide you have to use a repair facility then you save \$10.00. So, the question you have to ask yourself is this? Is it worth \$4.95 to see if I can get my PS2 console working today? Most people think it is, and have great success. I'm sure you will too.

**In summary- If the repair guide cannot help you get your PS2 fixed in an hour or less it will show you how to get a working one for about 2/3 of the \$120.00 price you would have to pay elsewhere. So, you still save about \$40.00- Either way you save money!**

**Don't be fooled by others selling similar guides.** Theirs may look like it has more info on doing repairs but you have to ask yourself "*Is this information that I can really use?*" The answer in most cases is a big **NO**. Most people simply can't do all of the complicated procedures that are explained in most guides. All I can say is "**You get what you pay for**". The goal of my guide is to help you get your PS2 fixed and back operational again as quickly as possible and with a minimum of work.

Another added benefit to owning this guide is that **YOU** have the power to fix your problems. **YOU** are not at the mercy of someone else's time constraints. If you send your console in for repair, not only will you **pay more**, it may **take weeks before you get it back**. If your console breaks 4 months later you will have to go through the same thing again:( **This guide eliminates all of that** and puts the **POWER** in your hands. You can have your console working the same day it breaks!

Take a look at this chart

REPAIR SHOP	PS2 REPAIR GUIDE
Cost to send PS2 Console In - \$10-\$15	Don't need to send it in - \$0.00
Cost of minor repair \$30-\$120	One time cost of \$14.95
Total time for repair 3 days - 1 month	20 minutes - 24 hours
Cost for return shipping - \$10-\$15	No cost-\$0.00
<b>Total - \$50-\$150 plus 3 day to 1 month turnaround</b>	<b>Total-\$14.95 with 20 minute to 24 hour fix</b>
<b>Cost if your console breaks again- \$50-\$150 plus time</b>	<b>\$0.00 with 20 minute to 24 hour fix</b>

If you are careful and read through the procedure before starting and then follow the manual step by step you will be able to do it. **It's like having me there looking over your shoulder telling you what to do next.** The next couple of pages are actual excerpts from the manual so you can get a feel for what you will get and to show you how easy it is. Take a look.

# POWERFUL PLAYSTATION 2

## Repair Guide



*Save money and get your  
Playstation 2 working today*

A guide through the Playstation 2 repair process

By  
Mark Eastman

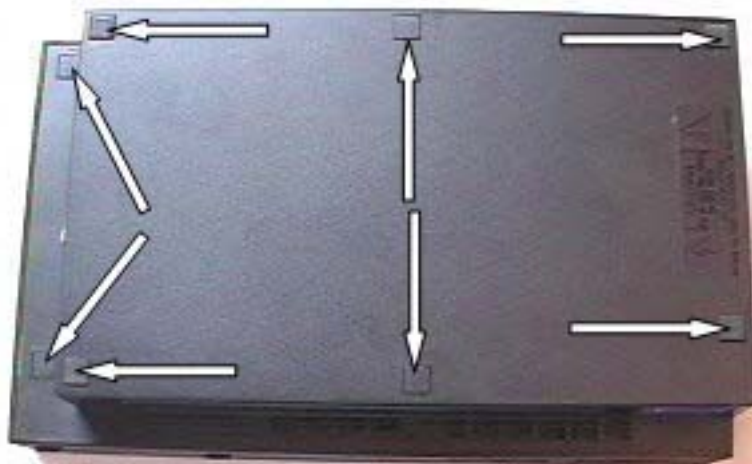
## POWER SUPPLY PROBLEMS – INSIDE THE PS2

The remaining checks will require that the PS2 cover be removed. Follow these steps to safely and easily remove it.

Flip your PS2 over so that the bottom is facing up



Remove all the screw covers. (There should be 6 screw covers, 4 made of rubber (outer edges) and 2 made of plastic (in the middle), that need to be removed. You can use a small flat blade screwdriver for this. There should be 2-4 more screw covers on the **outer** side of the base, underneath the controller ports. The older model PS2's have 4 screw covers, while the newer ones have only 2. Remove them all, and you should now have a total of 8-10 screws unveiled. Set the screw covers aside.



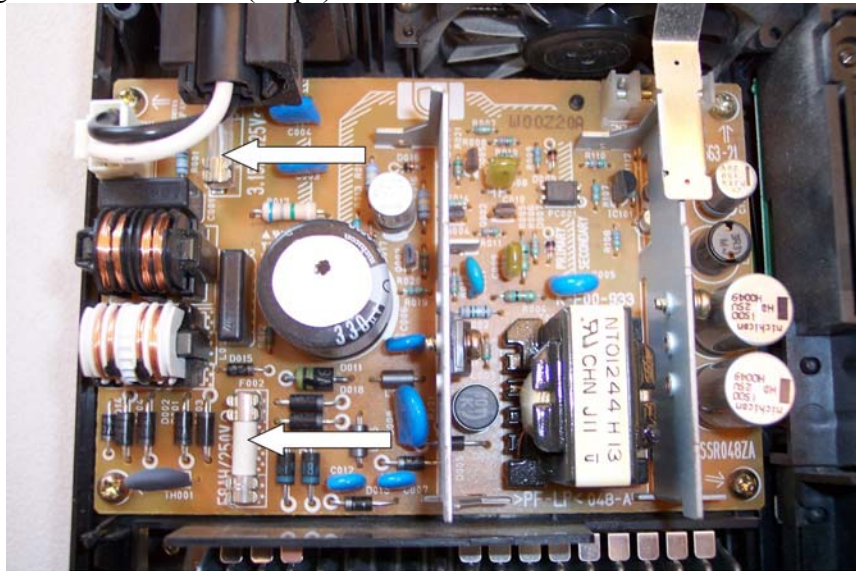


## NEXT IS A SMALL SAMPLE OF ANOTHER PART OF THE GUIDE

### CHECKING FUSES ON EARLIER VERSIONS

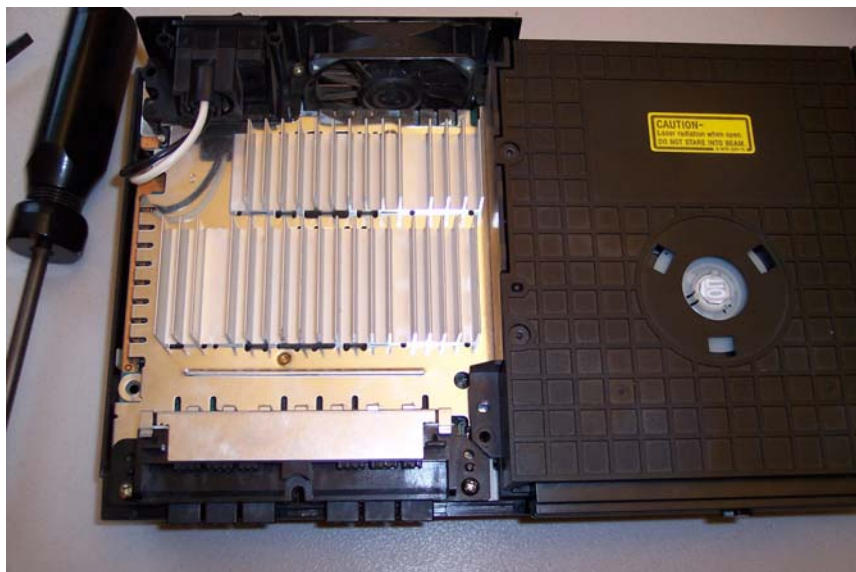
Last we will check the fuses. There are two located on the power supply board. (see photo) The one you see below is what you will see in earlier versions of the PS2. Typically versions 1-3. If you have a later version then you will see what looks like in the next picture. Use the section that applies to your particular PS2.

Remove the fuses one at a time from their holder. Take your voltmeter and put a lead on each side of a fuse. You should read a short. If you don't, then the fuse is blown and will need to be replaced. Read the value of the fuse either written on the circuit board beneath the fuse or on the silver connection on the end of the fuse. The fuse by the power plug on mine is 3.25A (amps).

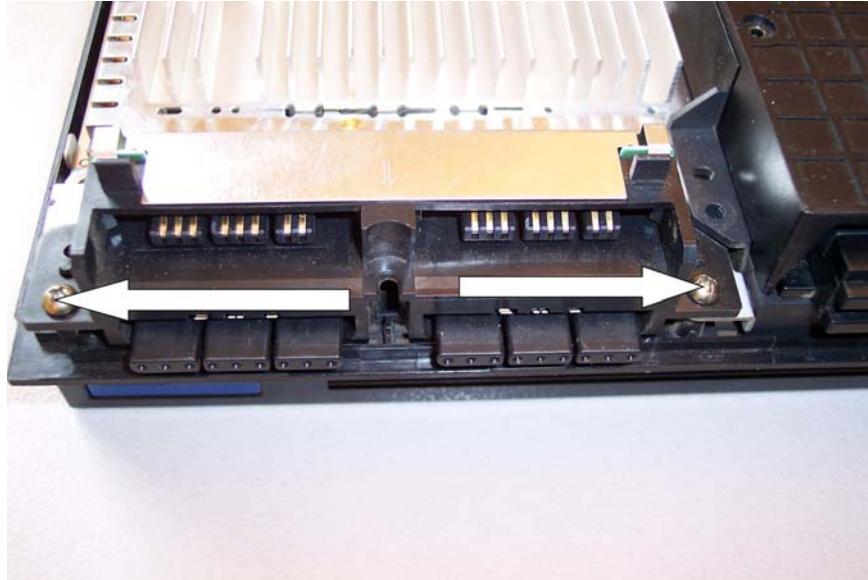


### CHECKING FUSES ON LATER VERSIONS

You may open your PS2 to find that your power supply looks like this (*see diagram*) You cannot get to the components as described above. You will need to remove the bottom cover of the console and flip the console upside down.

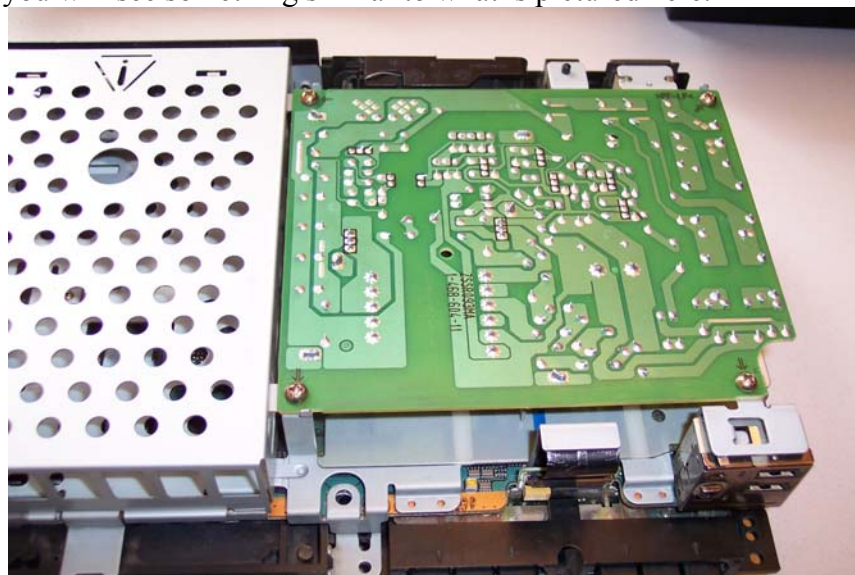


Before flipping the console over you will need to remove the screws holding the controller ports assembly in place. Once the screws are removed place your hand over the controller port assembly and flip the console upside down. – **CAUTION- There is a ribbon cable connected to the controller port assembly. If you do not support it when flipping the console over it could cause the controller port to fall and cause damage to the cable or connector- Please be careful.**

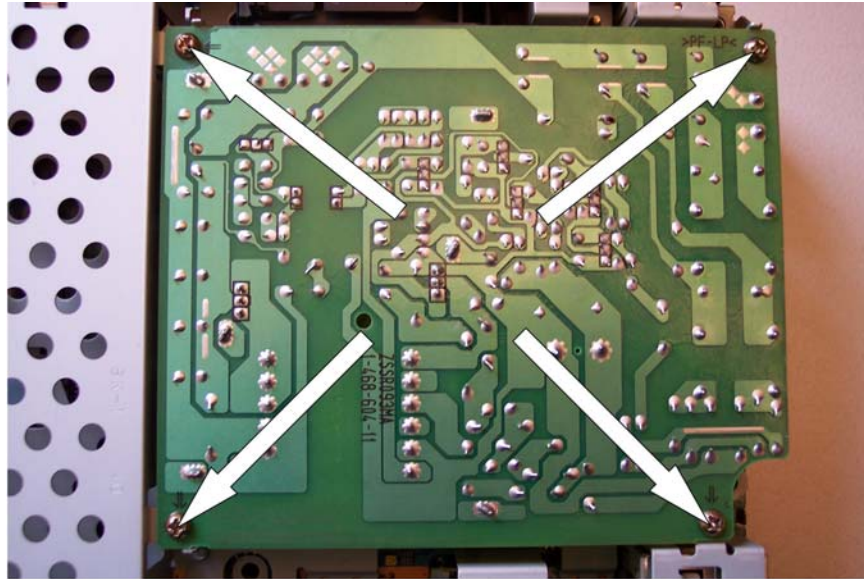


Once the console is flipped upside down just pull up on the case from the back. Be careful when removing the case so that it clears the USB connectors in the front. Once they are clear set aside the cover.

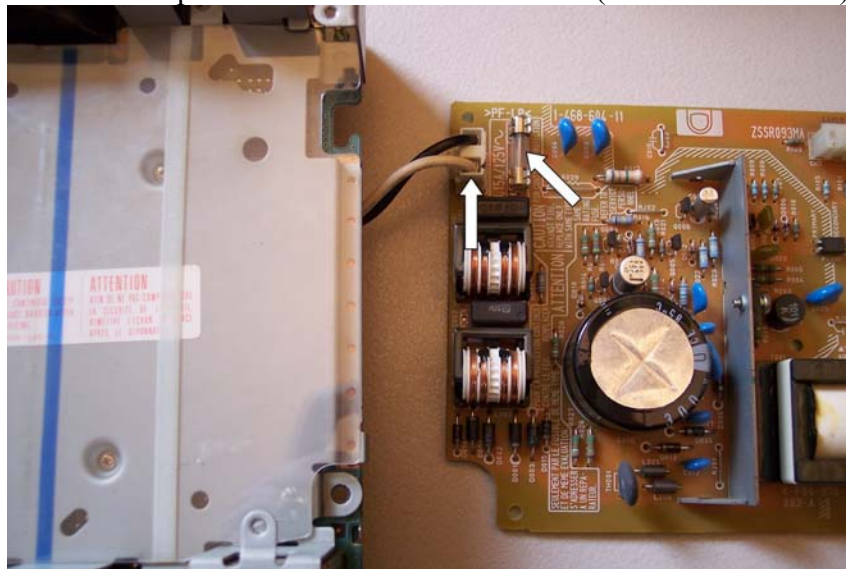
When the cover is off you will see something similar to what is pictured here.



Remove the 4 screws indicated in the picture. You will then be able to remove the expansion bay assembly. There is nothing attached to it.



Then pull up on the power supply board to remove the pin connector from the socket. Then fold the power supply board open like a book, leaving the power connector cable attached. You can then check the fuse (marked on the right) or remove the power switch cable and check it (marked on the left)



When you are done and ready to reassemble just reverse the procedure. Just be careful when plugging the power supply board back into the connector to make sure all the pins line up correctly.

## RESETTING THE DVD PASSWORD

Have a parental password on the DVD player that you have forgotten and need to reset it? Follow the procedure below to take care of it.

1. Pop in a DVD movie (anyone will work)
2. While you are watching the DVD movie, press select and a small menu should show up.
3. Go to "Setup" and access the parental control submenu .
4. When you push right to change the levels or region the password screen will come up.
5. Press the select button
6. When it asks you for a 4 digit numerical code enter the 4-digit number "7444"
7. It will then ask you to register a new password
8. Now type in your new code. You will be asked to type it again to confirm
9. Scroll down on the Movie ratings or level option select "off" to remove all restrictions

### HOPEFULLY YOU GET THE IDEA

That's just a small sample of the steps in the manual look like. As you can see it has a picture included with practically every step, and each step is described in detail so there is little room for doubt. If you think you could do what is described in these first few steps then you can **EASILY** do everything else that is in the manual. I hope this sneak peak into what the manual is all about has convinced you.

If I can't convince you that this guide **REALLY** can help you then maybe some of my customers can. They are people who just like you came looking for a way to easily fix their PS2 problem. And from the testimonials I get I can tell you it is really working. Here are just a few of my favorites.

---

*Mark,*

*I was skeptical about this manual before I tried it. I recently acquired a ps2 from a friend who said it didn't work. I purchased your manual and it is now working just like new. I also repaired my son's ps2 that was having the same disc read error problem. I would like to thank you for saving me \$220.00. I was going to send both machines to sony for repairs until I found your manual. Thank you so much. This manual is a must have for ps2 owners even if your machine is working fine. Thanks again Mark.*

*John A.*

*Reston Virginia*



---

guys;

*downloaded the playstation2 repair manual this afternoon. add in \$2.50 for a ..... at RadioShack and my sons PS2 is back to working perfectly. beats \$120.00 to \$200.00 for repair or replacement any day. excellent work..*

*Jeff B.  
Portsmouth Va.*

---

*I just used your guide and I have only one thing to say.....I LOVE YOU MAN! I was just about to buy a new PS2 yesterday from the mall! Now my PS2 is working again and its all thanks to your guide. Great product. Super easy to use!*

---

Before we go I'd like to leave you with a recent email I received from a **17 year old customer**.  
*I recently purchased your guide. I am, 17 years old, so my mother's name was used for the purchase. I would like to say your guide helped VERY much. Before purchasing the Playstation 2 Repair Guide, I could barely get my PS2 to read any games at all, afterwards, I was able to disassemble it without fear of causing irreparable damage, fix the Disc Read error problem and reassemble it with confidence. Now I don't have to worry about saving up \$100 or more so I can have Sony fix a little problem. Thank you again SO much for writing this guide, I'm going to tell everyone I know who has a PS2 about it.*  
-Ryou L.

Don't wait any longer-If Ryou L. can do it then you can too! Get your copy of the Playstation 2 Repair Guide Today! Order it Now - goto [www.powerfulguides.com/ps2](http://www.powerfulguides.com/ps2)

The Powerful Playstation 2 Repair Guide is now available as a softcover book through my publisher Author House at [www.authorhouse.com](http://www.authorhouse.com) . Just order though their bookstore. The order link is on the sales page with the download too. It's a nice way to have the book and keep it handy in case you need it again.

That's what is so great about this book, you pay once for the book and can fix your PS2 for years to come. This saves you a ton of money over time on repairs or new purchases. You will be amazed at exactly how easy it is to do these repairs yourself. Go ahead and get your copy today and get started on repairing your PS2.

If you have a video game website or own or work at a video game store of any kind please checkout our affiliate program at [www.powerfulguides.com/affiliate.php](http://www.powerfulguides.com/affiliate.php) . You can earn some extra money helping us sell the Powerful Playstation 2 Repair Guide.