

# Sedu™

Ionic Ceramic Pro Flat Iron

Ultra-Smooth  
Ultra Lightweight

**OWNER'S** MANUAL

# Safety Instructions

IMPORTANT SAFEGUARDS

## WARNINGS

When using electrical appliances, especially if children are present, basic safety precautions should always be followed, including the following:

- ⦿ HOT! DO NOT TOUCH HEATING PLATES.
- ⦿ DO NOT USE NEAR WATER.
- ⦿ READ ALL INSTRUCTIONS BEFORE USING.
- ⦿ **DANGER - As with most electrical appliances, electrical parts are electrically live even when the switch is off.**
- ⦿ Always unplug appliance immediately after use.
- ⦿ This iron is designed to use electricity of 110/120V, 50/60 Hz only.
- ⦿ Do not reach for an appliance that has fallen into water. Unplug it immediately.
- ⦿ Do not clean the appliance with thinner, gasoline or alcohol.
- ⦿ Do not use attachments that are not recommended by the manufacturer.
- ⦿ Never operate the appliance if it has a damaged cord or plug, if it is not working properly or if it has been dropped or damaged, or dropped into water.

# About Sedu



**Sedu straightens, smoothes, and tames frizzy or rebellious hair for long-lasting results.**

## Ultra-Smooth Plates with Hair Glossifying Technology

- Smooth straightening motion without pulling of hair
- Cut your hair straightening time in half
- Hair becomes up to 3X smoother and silkier compared to hair done by other hair irons
- Renew hair with softness and shine
- No hair damage, eliminate frizz

## Ultra-Lightweight Design

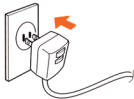
made with composite materials used in aerospace

# Operation

# Instructions

# 1

Plug the appliance into a wall outlet. (110V, AC 60Hz)



# 2

### Set temperature

For bleached, fragile, damaged and fine hair, the lower setting is advised. (Below 180°C)



For coarse, thick, ethnic and resistant hair in healthy condition, maximum heat on high setting is used to save time and effort. (Above 180°C)

# 3

### Set the switch to the ON position

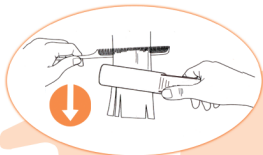
The power light will come on

Within 20 to 30 seconds, the power light will blink (rapidly). The iron is now ready to use.



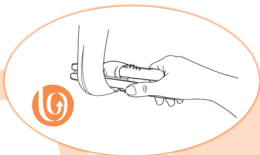
# STYLING TIPS

## Flat Straight



Insert a 2-inch section of hair between the plates, then squeeze the handle together and glide slowly through hair from the roots to the ends.

## Soft Curls



Insert a 2-inch section of hair between the plates, gently squeeze the handle together and glide iron to the ends, then wind hair around.

## Flip Out



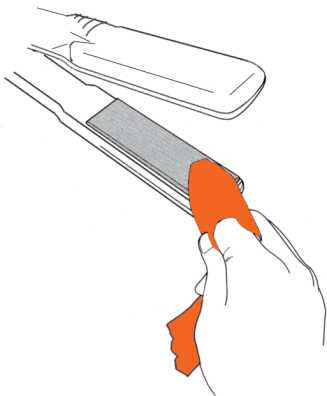
Insert a 2-inch section of hair between the plates, then squeeze the handle together and glide slowly through hair from the roots, slightly flip out the ends.

## Flip In



Insert a 2-inch section of hair between the plates, then squeeze the handle together and glide slowly through hair from the roots, slightly flip in the ends.

# MAINTENANCE



Your appliance is virtually maintenance free. No lubrication is needed. Keep heated surfaces clean and free of dust, dirt and hair spray. If any abnormal condition occurs, unplug the unit, allow it to cool, and contact your local retail representative. No repairs should be attempted by the consumer.

If cleaning becomes necessary, be sure to unplug the appliance and allow it to cool. Please use flat iron mat & cleanser to wipe the appliance clean.

# Warranty & Guarantee

The appliance carry one year limited warranty, against defects caused by faulty material or workmanship. Not covered by the warranty are steel parts, plastic parts, flex cord, as damages caused by improper handling.

In case of complaints, please send the appliance post paid to your nearest service station. Defective parts will be replaced.

The manufacturer has no other obligation or liability in connection with said appliance.

For service station in your area, visit [SeduBeauty.com](http://SeduBeauty.com).

WARRANTY  
GUARANTEE

Sedu™

Ionic Ceramic Pro Flat Iron

[www.SeduBeauty.com](http://www.SeduBeauty.com)