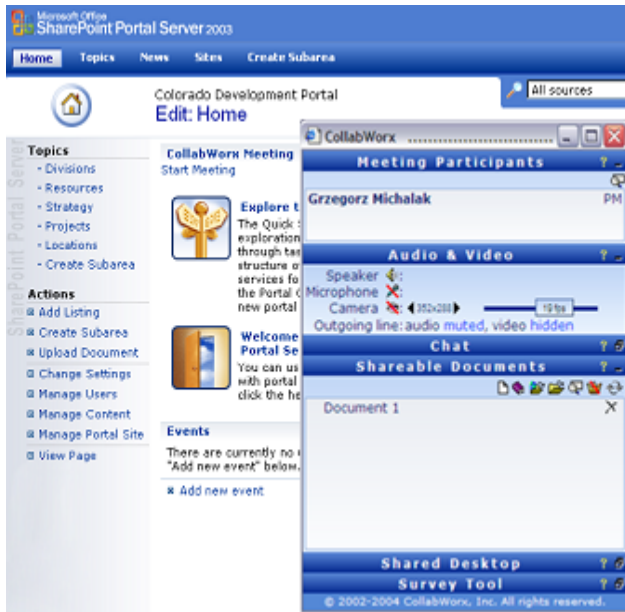




# Web-based Secure Real-time Communication and Collaboration

## CollabWorx Portal Integration Capabilities

CollabWorx Secure Real-Time Collaboration (SRTC) platform is a modular, web-based framework that easily integrates with COTS portals and custom web applications. Currently, an integrated SRTC is available for the following commercial portals:



- Microsoft SharePoint Portal
- Computer Associates CleverPath Portal
- Appian A3 Portal

Integration with additional portals is available as a professional service directly from CollabWorx.

A typical integration includes:

- All CollabWorx modules running within a particular portal (unless requested otherwise);
- Integration with authentication and authorization mechanism of a particular portal;
- Access to portal's document repository;
- Integration with portal's user and workspace management tools (all policies);
- Creation of collaboration workspaces.

The architecture of CollabWorx SRTC, in particular its extensibility and embeddability, allows rapid delivery of a product featuring a winning combination of asynchronous portal tools (message boards, alerts, workflows, document repositories, etc.) with first-class secure, real-time tools (high quality audio and video communication, vector-based whiteboard, web co-browser, group chat, multi-resolution map viewer, 3D viewer, etc).

Integration capabilities of CollabWorx present a tremendous business opportunity for system integrators and government contractors. We work closely with companies such as SAIC, Raytheon, or GIST to provide full support for their contracts. Our offer for integrators includes special development licensing, technical documentation, remote and onsite support for solving development issues, competitive rates for subcontracting integration tasks, etc.

CollabWorx has been integrated with great success into Sustainment Portal (US Army Combined Arms Support Command), Virtual Emergency Operations Center (GIST), Advanced Interactive Discovery Environment (NASA, SU, Cornell Univ.), or Ft. Eustis' internal portal, to name a few.

