

## The Look You Want... The Security You Need!



**High Traffic Capabilities**

**Low Cost Installation**

**Crash Rated Applications**

**Dual or Single Buttress**

**High Reliability  
Low Maintenance**

### Looks Great on Your Facility

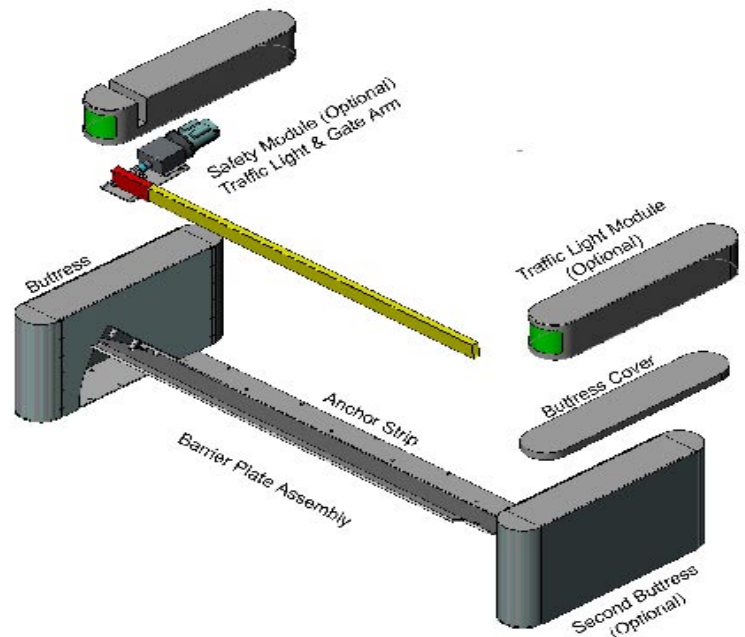
Future Barriers recognized the need in the industry for an aesthetically pleasing alternative to the industrial appearance of barrier systems currently available on the market. The result was the development of a high security barrier system that can be configured to blend with current architectural trends. The heavy structure necessary to protect a facility is there but doesn't detract from the overall appearance of your facility.

### Surface Mounted and Crash Rated

The Future Barriers Surface Mount Series (FB-SM) is a modular bolt-down barrier system designed to prevent vehicular intrusion into facilities. These systems are designed to meet the traffic control scenarios for a variety of facilities. They can be configured to withstand an impact from a vehicle weighing 15,000 lbs traveling @ 35 mph. The barriers come in single and dual buttress configurations. The barrier plate height is 24" or 31" (610mm or 787mm) and is available in widths ranging from 8' to 14' (244cm to 427cm). These systems can be used in Dual Barrier configuration to achieve a 28' (853cm) clear opening.

### All In One Safety

The FB-SM series has an optional safety-module that includes a gate arm and an optional traffic light module that are integrated into the buttress. This integration reduces the overall installation space required and reduces installation costs as well. The safety-module features a safety arm that is smooth, quick and quiet and lights that are easily visible in all weather conditions. These lights are designed to be part of the buttress, at the barrier, and reduce the confusion of having lights in a position where they may be overlooked by a driver approaching the barrier.



**Patent Pending**

For More Information Contact Our Authorized Distributor:

Check Out Our Entire Line Of Perimeter Protection Products



1.888.222.4559  
www.SecureUSA.net

1.866.364.8979  
www.FutureBarriers.Com

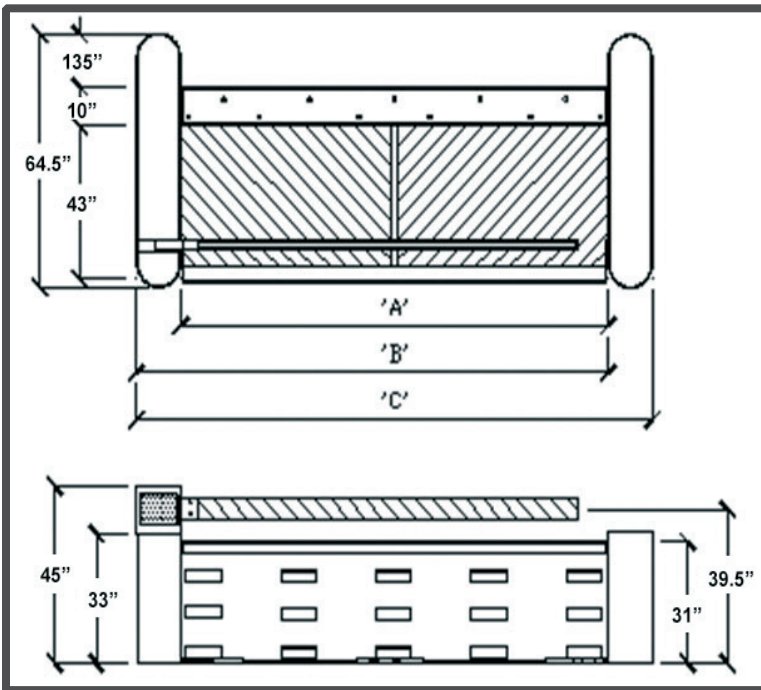


## The Look You Want... The Security You Need!

### Why Choose Future Barriers?

Focusing on customer's needs is the driving force behind Future Barriers. All of our products are designed to exceed our customers' expectations for security, aesthetics, and cost. The ease of installation and low cost of long-term maintenance are the result of listening to customer requests. Customer satisfaction continues long after the contract is signed. We stand behind our products with a solid warranty and a distribution network consisting of companies committed to excellence.

### Dimensions:



Clear Opening	96 Inch (2,438mm)	120 Inch (3,048mm)	144 Inch (3,658mm)	168 Inch (4,267mm)
A Dimension	96" (2,438mm)	120" (3,048mm)	144" (3,658mm)	168" (4,267mm)
B Dimension	108.5" (2,756mm)	133.5" (3,391mm)	156.5" (3,975mm)	180.5" (4,585mm)
C Dimension	131" (3,327mm)	145" (3,683mm)	169" (4,293mm)	193" (4,902mm)

### No More Messy Hydraulics

The FB-SM series utilizes a "self-contained" electro mechanical actuator that eliminates the need for a hydraulic power unit or air compressor. This means that the associated hoses, filters, and solenoid valves, which are common causes of barrier system failure, are gone! This revolutionary design significantly reduces installation costs, maintenance costs, and improves barrier reliability.

### Product Features:

Plate Width:	8 to 14 feet
Drive:	Electro-Mechanical
Cycle Time:	3 to 4 seconds, emergency 1.5 – 2.5 seconds
Frequency:	Unlimited except for traffic flow rate
Environment:	Temperature Range -20F to 120F (-29C to 49C)
Power Loss:	Optional UPS Systems available.
Power:	220V / 30A Single Phase
Control Unit:	PLC Control
Options:	second buttress, anchoring frame, safety module, traffic light module, finish/color, heaters.
Crash Rating	Dual Buttress Barrier (31") - 30% greater than K4 15,000 lbs. @ 35 mph

### Benefits:

- Low cost installation: bolt down, no drains, no Hydraulic Power Unit to install
- High Reliability from elimination of hydraulic hoses, pumps, and reservoirs.
- High traffic volume capabilities
- Integrated gate arm and traffic lights
- Single or Dual Buttress configuration
- PLC allows easy integration of other system components such as garage doors, card readers, etc.
- Self contained electro-mechanical actuator for efficient reliable control
- Onboard System Diagnostics

**Patent Pending**

For More Information Contact Our Authorized Distributor:



1.888.222.4559  
www.SecureUSA.net

Check Out Our Entire Line Of Perimeter Protection Products

1.866.364.8979  
www.FutureBarriers.Com

