



2006

ConnectMate® Engine

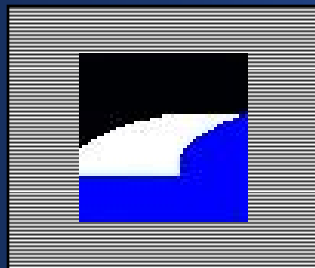
A commercial off-the-shelf (COTS) Enterprise Application Integration toolset manufactured by a service disabled veteran owned, 8(a) certified company in the USA.

DUNS: 018129622



Schedule
Contract GS-35F-0182S

NAICS: 511210, 541511, 541512, 541513, 541519



TC SOFTWARE, INC

Enterprise Integration Solutions

21 Jody's Way

Hampton, Virginia 23666

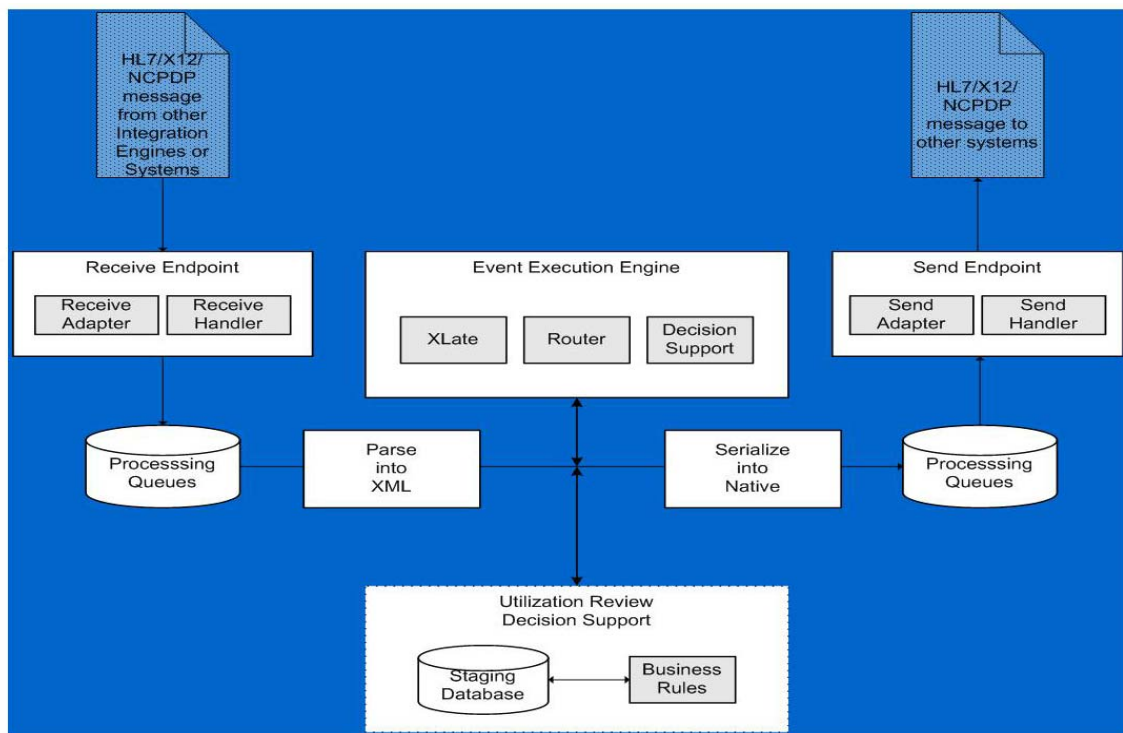
(866) 286-7366 fax (757) 827-6640

www.objecttcs.com

ConnectMate™ Engine

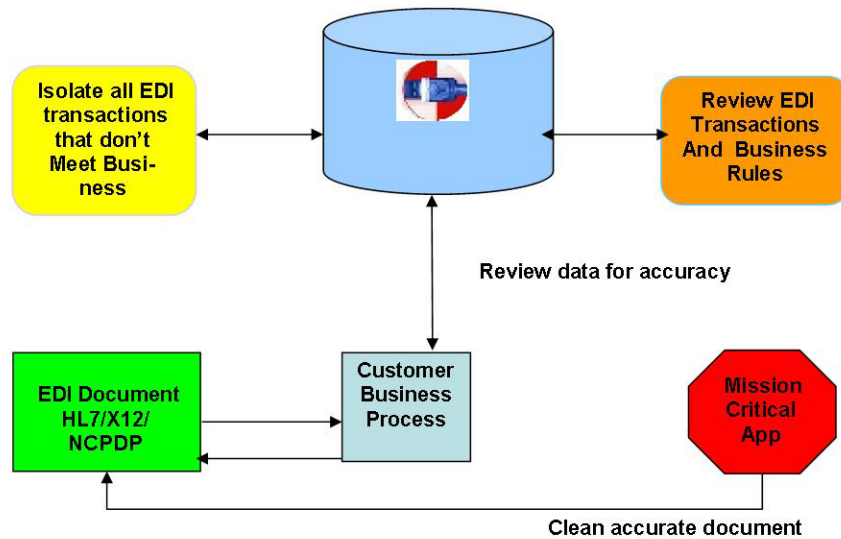
Your Affordable Integration Solution

ConnectMate™ Engine integrates exchanges, translates and routes EDI messages between and within system networks on a real-time basis. At the same time allowing the messages to be analyzed and acted upon for decision support purposes. Deploy ConnectMate® Engine into an existing system architecture and business functions continue without interruption. This engine integrates administrative, financial, and clinical transactions on any platform from IBM Mainframes to Intel PCs and at the same time supports HIPAA transaction sets.



- Cost effective with features that cost thousands more from competitors.
- Easy to deploy, customize and use, features “drag and drop” tools.
- Scalable to meet your organization’s needs.
- Reduce the cost of interfacing disparate applications by 50%.
- Shorten time to deploy new applications by cutting the implementation time by 75% over current methods.
- Combine decision support with application integration to help eliminate errors and improve quality of services provided.

ConnectMate™ Business Model for Data Analysis



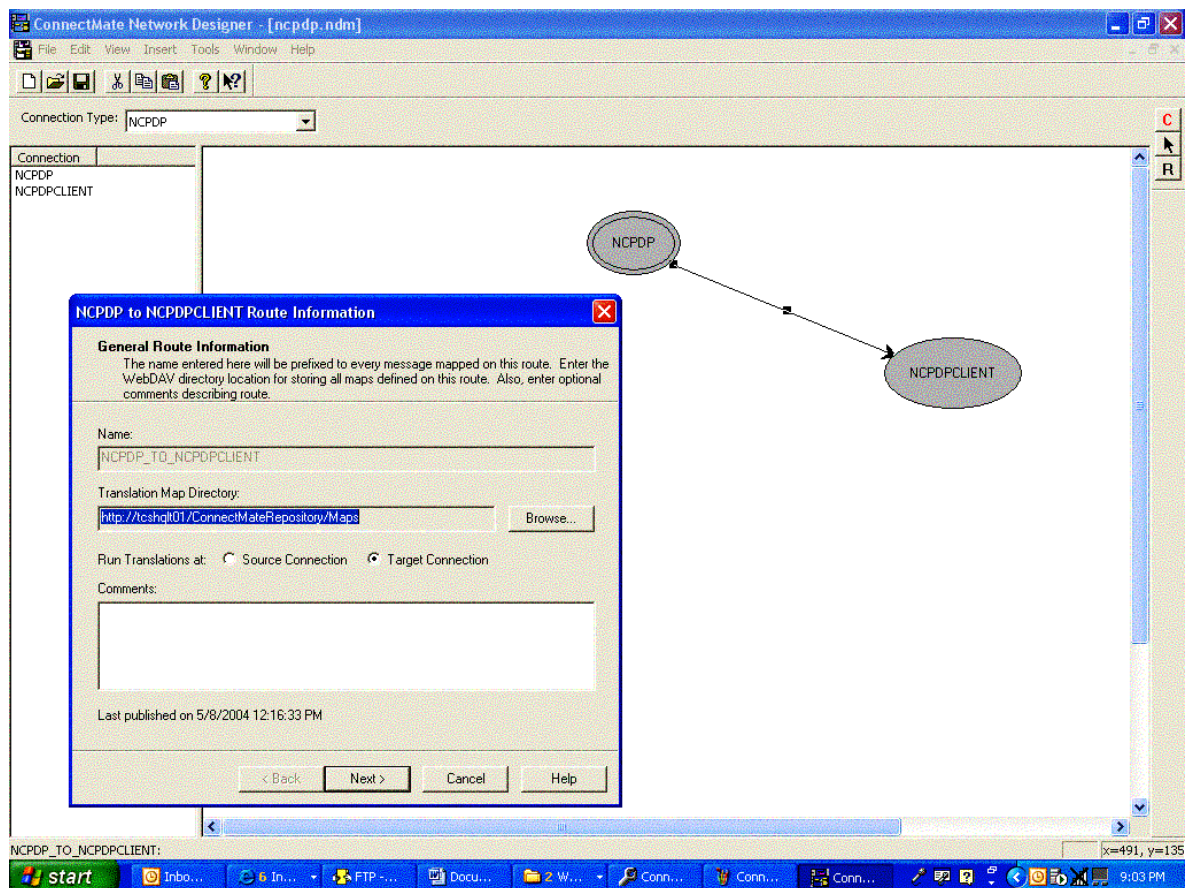
Deploy ConnectMate Engine into an existing system architecture and business functions continue without interruptions.

ConnectMate™ has all the features required by businesses, from the smallest to the largest enterprises. Some of the features included are:

- 🌐 Graphical Network Interface Designer (Trading Partner Manager)
- 🌐 Graphical Translator
- 🌐 Global Network Management Desk
- 🌐 Alerting Engine (Fax, Email, Page)
- 🌐 Adapters for IBM WebSphere MQ and Microsoft BizTalk Server
- 🌐 Communication Protocols: TCP, File, LPD, Reverse Telnet, SMTP, HTTP, SOAP, MSMQ, MQ Series
- 🌐 ConnectScript scripting engine that supports VBScript and JScript syntax
- 🌐 Intelligent Workflow Router
- 🌐 Windows Management Instrumentation (WMI) Provider
- 🌐 SQL Database Integration (Oracle, DB2, SQL Server)
- 🌐 Archive, audit, and QoS

ConnectMate™ Network Designer

- ➔ “Drag and drop” feature allows you to create new routes for custom communication points and filters.
- ➔ Configuration information is presented through the graphical interface.
- ➔ Routes may be custom configured and tested for accuracy.
- ➔ Color coded symbols give status for each route.
- ➔ Filters and functions provide a seamless flow of information between disparate systems for more efficient operation.
- ➔ Reduces disparate interfacing cost by 50%.
- ➔ Shortens deployment time for new interfaces by 75%.
- ➔ Simplify on going administration with software support.
- ➔ Reduces redundancy and streamlines information processes.
- ➔ Deploy ConnectMate Engine into existing system architecture and business functions continue without interruptions.



ConnectMate™ Graphical Translator

- ➔ Reduces the time to translate messages without programming.
- ➔ Allows developers to integrate transformations directly into their existing applications.
- ➔ ConnectMate Translator maps native HL7, X12, and NCPDP to a normative XML format.
- ➔ Drag and drop complex transformations that generate industry standard XSLT used by the transformation runtime.
- ➔ Transforms messages into readable formats
- ➔ Extraction filters can be used to route messages to different systems
- ➔ Data tracked for auditing purposes in audit log.

The screenshot displays the ConnectMate Translator interface for a project named 'NCPDPTTEST1.mxd'. The main workspace shows a graphical transformation workflow between a 'Source Message' and a 'Destination Message'. The 'Source Message' tree includes nodes for TSH, Insurance, Patient, TransactionLevel, and Claim, with sub-nodes for various claim details like Claim01_SegmentIden, Claim02_PrescriptionS, etc. The 'Destination Message' tree includes TSH, Insurance, Patient, and a list of patient attributes such as Patient01_SegmentIdentificati, Patient02_PatientIdQualifier, etc. The workflow consists of several transformation blocks: a 'bulk-copy' block (Set1) that copies the entire source message; a 'script' block (Val1*) that applies a script to the source message; a 'greater' block (Num1, Num2) that compares values; and a 'value-map' block (Bool1, Val2) that maps source values to destination values. A 'Functions' panel on the left lists various XSLT functions like 'bulk-copy', 'record-filter', 'script', 'value-map', etc. The bottom of the interface shows a 'Messages' tab with a log entry: '61 DE19970920 DF5 AM11 D9557{ DC100{ DX100{ DQ657{ DU657{ AM03 E28 DB00G2345 AM07 EM1 D2123456 E101'.



ConnectMate™ Engine

Your Affordable Integration Solution

Flexible, Configurable, Reliable and Scalable

- ▶ Operating Systems (Windows NT, 2000, Windows 2000 Advanced Server, XP, and 2003).
- ▶ Supports HL7, X12, XML, PDF and NCPDP message processing standards.
- ▶ Supports HIPPA compliant transactions.
- ▶ Integrate with any database (DB2, SQL Server, Oracle).
- ▶ Easily configurable for custom fit for multiple services.
- ▶ Uses intelligent real-time messaging.
- ▶ Creates a seamless flow of information between disparate systems for more efficient operation.
- ▶ Shortens deployment time of new applications by 75% by cutting the time to implement interfaces.
- ▶ Reduces redundancy and streamlines information processes.
- ▶ Combined decision with integration To reduce error and improve quality.
- ▶ Instant access to digital records at point of service.
- ▶ Provides reliability and availability.
- ▶ Integrates Clinical, Financial and Administrative transactions.
- ▶ Promotes passive and active integration.
- ▶ Software support and customization available at reasonable hourly rate.

Minimum System Requirements To use ConnectMate™ Engine

Processor	Computer with a Pentium 300-megahertz (MHz) or higher processor
Operating System	Microsoft Windows® 2000 Server or Windows 2000 Advanced Server with Service Pack 2 (SP2) or later
Memory	256 megabytes (MB) of RAM ¹
Hard Disk	8 gigabytes (GB) of available hard disk space ²
Drive	CD-ROM drive
Display	VGA or higher-resolution monitor, Super VGA (SVGA) recommended
Third party products	Any version of Microsoft SQL Server 2000 with SP3 or higher must be installed prior to installing ConnectMate™ Engine.
	Microsoft Message Queuing Service (MSMQ) must be installed prior to installing ConnectMate™ Engine.
Anti-Piracy	Parallel port dongle

¹ *Additional memory may be required, depending on operating system requirements.*

² *Actual requirements vary based on system configuration.*





Software Purchase Information

ConnectMate® Engine integrates exchanges, translates and routes EDI messages between and within system networks on a real-time basis. At the same time allowing the messages to be analyzed and acted upon for decision support purposes.

ConnectMate® Engine may be ordered from TC Software's GSA Schedule 70 contract GS-35F-0182S. GSA Schedule 70 contracts, also known as Multiple Award Schedule (MAS) for Information Technology, grants federal agencies direct access to TC Software products and services for the following special item numbers:

- SIN 132-32 Term Software License
- SIN 132-33 Perpetual Software License
- SIN 132-34 Software Maintenance
- SIN 132-50 Classroom Training
- SIN 132-51 Information Technology Services

GSA pricing for TC Software's products and services may be viewed online at the GSA Advantage website at www.gsaadvantage.gov. You may also request a copy of the TC Software GSA Schedule 70 pricelist in PDF format or place an order by sending an email request to govsales@objecttcs.com.

Free Download for trial and evaluation use - available at www.objecttcs.com

