

# Terminal Service client for Mobiles

---

## Getting Started Guide

### 1. About

TSMobiles is a Windows Remote Desktop Protocol (RDP) client for Java powered mobile phones and RIM Blackberry devices. By using this client you can remotely access any Windows-based computer via Terminal Service or Windows Remote Desktop through your mobile phone.

Terminal Service (also as Remote Desktop) is the Microsoft Windows feature that lets you remotely log-on and work at a computer as if you were seated at the local console. TSMobiles is a light and secure client which is excellent for remote accessing to computer and working with your business applications, managing files and performing administrative tasks.



### 2. Installing the client on mobile phone

You can download the client directly to your mobile device. For mobile phones which have only WAP browser, you should open WAP page on our site:

<http://www.tsmobiles.com/wap>

For smartphones which have Web browser, and RIM Blackberry devices we recommend you open home page of our site in device browser:

<http://www.tsmobiles.com>

Next, open the page "Download" and choose right client module for your device. Choose the Blackberry client for RIM Blackberry device or Standard client for all others.

If for some reason you can't download the client module directly, or error occurs at download, you can download archive file (.zip file) from our site. Open the page "Download" in your computer browser:

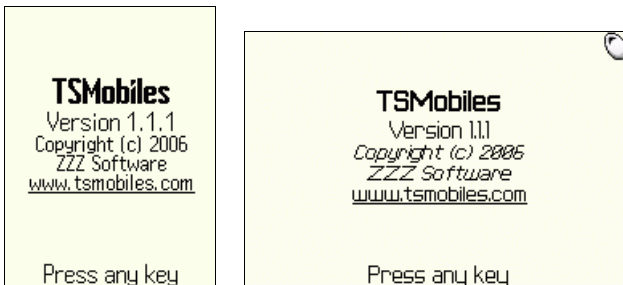
<http://www.tsmobiles.com/download.html>

Download the single archive file that contains files of the client into separate directory on your computer. Choose the Blackberry client for Blackberry device or Standard client for all others. Then unzip it and install the client files, using special management software for your device (as example: Blackberry desktop manager).

*More details about how to install Java applications on mobile phone you can find in user manual of your device, or you can get to know it on Web site of device manufacturer.*

### 3. Starting the client

If the client is completely installed on your mobile phone and works properly, you will see the title screen at startup.



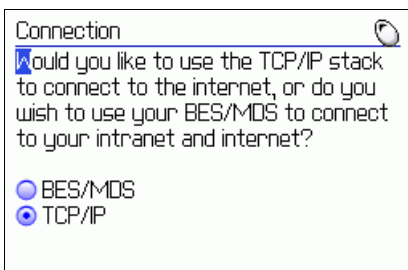
*Note: The examples of the client screenshots in this manual can be differing for various models of mobile phones, however the basic principles of the client control are identical for most devices.*

Before you can connect to your computer through mobile phone, you should configure access to the Internet for third-party applications. As a rule, you need make right settings for access point name (APN) in data service settings on the mobile phone.

Most mobile networks offer two different APNs: one for full Internet connection and another that is a more limited set, often used for WAP only. You should configure APN for full Internet access. Internet APN is used by third-party applications which needs direct Internet access (such as various messengers, web browsers, email clients, etc.) or when you use mobile phone as modem to access Internet from your PC.

*Specific settings for the Internet APN for your mobile phone, you can know from support service of your mobile network operator. We recommend you precise the following: which tariff plan is the optimal for using third-party applications, and which settings are proper for working with full Internet access through TCP/IP connection.*

**Blackberry notes:** At the first start the client on Blackberry device we recommend choose a direct access through TCP/IP without use the BES server.



Follow link below to know how to configure full Internet access on your Blackberry device:

<http://www.blackberryforums.com/showthread.php?t=2185>

Connection through BES:

Many of corporate users have connecting through the Blackberry Enterprise Server (BES). The MDS service on the BES allows applications to create connections to computers inside a corporate network. With a BES, you can connect to remote RDP hosts inside your company's firewall. Before you select this connection option, check if your BES/MDS are configured correctly.

On your Blackberry, select Options, then navigate to the Service Book. Scroll through the Service Book list and look for Desktop IPPP. The MDS is configured correctly and you can choose BES/MDS as your connection method, if Desktop IPPP appears in the Service Book list. Otherwise please contact your BES administrator.

## 4. Configuring Remote Desktop on computer

Before you start to use TSMobiles, you must enable Remote Desktop Connection (for XP) or Windows Terminal Service (for Windows NT, 2000 server, and 2003 server) on the server you need to connect. For more information on setting this up, please visit one of the following sites:

For Windows XP Users:

<http://www.microsoft.com/windowsxp/using/mobility/getstarted/remoteintro.mspx>

For Windows 2000 Server Users:

<http://www.microsoft.com/technet/prodtechnol/win2kts/default.mspx>

For Windows Server 2003 Users:

<http://www.microsoft.com/windowsserver2003/community/centers/terminal/default.mspx>

For RDP connection you need make sure that your computer is accessible from the Internet and TCP port 3389 (default Windows RDP port) is opened on firewall or router. If you use ADSL or any other routers, make sure that it is enabling access to your computer from Internet through TCP port 3389 (probably you need to configure port forwarding from external IP address of router to internal IP address of computer). If on your computer installed Windows XP with enabled built-in firewall, or any other firewall software, you should open TCP port 3389 for incoming connections.

If you have a problem with configuring your router/firewall, you can get more help at:

[http://www.portforward.com/english/applications/port\\_forwarding/RemoteDesktop/RemoteDesktopindex.htm](http://www.portforward.com/english/applications/port_forwarding/RemoteDesktop/RemoteDesktopindex.htm)

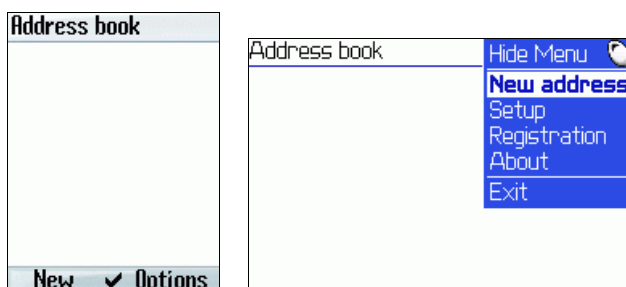
*You can check the direct Internet access to your computer very simply. For that, try to establish a connection to the RDP port by using "telnet" utility from other computer which have access to Internet and outside from your local network. Open "Start" - "Run" dialog in Windows, and then enter "cmd.exe". Next, at the command prompt enter "telnet 1.2.3.4 3389". Use all commands without double quotes. Instead of 1.2.3.4 use external Internet IP address of your computer. You can ask your friend try to do it for you from his computer. It only test for opened port, nobody can access your computer in this way.*

To fast determine Internet IP address of your computer go to the following link from your computer and look for IP address on this page:

<http://www.whatismyip.com>

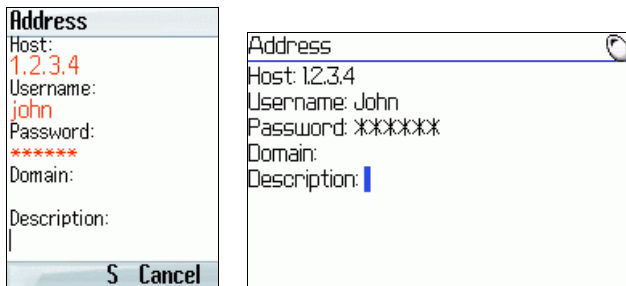
## 5. Connecting to computer

Once you start TSMobiles, you should see an address book. The address book contains list of servers that you can use TSMobiles to connect to. At first start the address book is empty. Use device-specific button "New" or open address book menu and select item "New address" to add new record in address book.



In the new record dialog you need to enter the name (usually full Internet name, for example host.company.com) or IP address of host to which you want to connect. Then you need to enter the user name that exists on this host and password. In most cases the field "Domain" is not filled.

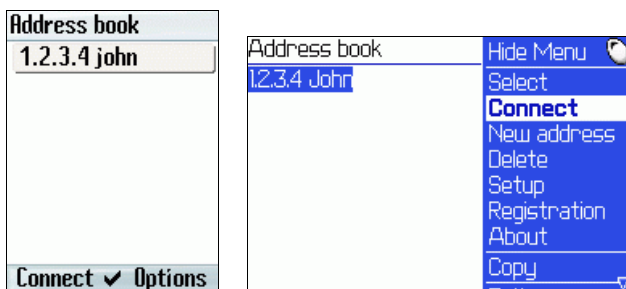
**Blackberry notes:** Blackberry and some other mobile devices make the first symbol in the fields in upper-case. Be careful, because the password will be masked by asterisks you can make mistake at entering the password in the client.



*Note: Instead the host address "1.2.3.4" and user name "john" you should enter address of your host, and enter user name / password that already exists on this host. Also you can change the default RDP port (3389) for your host. Specify other port number at end of host address through ":" (as example: "1.2.3.4:3390").*

When all fields will be filled, don't forget to save this record! For that use the device-specific button "Save", or use button "Options" or "Menu" to open address book menu, then select the item "Save" to save new address book record.

Next, in address book list, you should select new record and connect to the specified computer by button "Connect". For some devices you need to open an address book menu and to select item "Connect".



*After successful connection to remote computer, the client will be displaying the information message for unregistered version. Use device-specific button "Close" or menu item "Close" so as to cancel this message and to open the desktop. In registered copy this message is not displaying.*

You can find more information about TSMobiles on our site:

<http://www.tsmobiles.com>

See also TSMobiles User Guide:

<http://www.tsmobiles.com/guide/tsmobiles.html>