

SECURITY LABEL SEALS

1. Majority of security labels are self-adhesive and designed for surface mounting applications.
2. Some versions can be manufactured with an optional interlocking security die-cuts that cause the labels to tear off along the “cuts” upon peeling
3. Three types of material are available: Partial Transfer, Total Transfer and Non Transfer. Each product comes in a range of adhesives from mild to permanent suitable for different materials and surfaces applications.
4. Personalized marking and design with customer information, sequential numbering and bar-code identification.
5. A hidden “void/open” message is clearly visible when any part of the label is lifted so that unauthorized opening is evident

SPECIFICATIONS

- Our security labels consist of a basic face material, adhesive and backing liner. The main part is high quality adhesives, which are suitable for almost all application surfaces either indoor or outdoor. Different designs and materials meet different needs of security applications such as temperature and humidity
- Generally, security labels function best under a certain heat and freeze resistance range depending on the selection of the seal type. Any attempt to remove it using a heating or freezing source will be futile, as the hidden message will still get triggered when peeled.
- Security labels are both easy to apply and remove. High quality types are highly tamper evident and are widely used to detect unauthorized activities by e.g., police and military, banks, airlines, transporters in general as well as producers and exporters of all kinds of products.
- In addition to the hidden “void/open” message, an optional security cut feature on the face of the label seal tears the seal into smaller parts when peeling occurs. Thus, design of the security cut makes it almost impossible to put the seal in place without evidence.
- The ALS is generally use as a highly visible form of tamper indication. However, some seals are used as covert seals using UV coating or printing ink as a means of tampering detection and authenticity.
- Typical applications are found on sensitive documents and security envelopes, cartons and boxes, IT equipment, evidence bags, first aid boxes, utility meters and timers, cash boxes and ATMs, glass and plastic containers, military equipment, ballot boxes, canisters and drums, food and beverage containers and packaging.

FACTS

- The face materials used for security labels vary according to security level of application.
- It includes polyester, vinyl, polyethylene and special-treated paper.
- There are several standard sizes but the seals can be sized to fit individual requirements.
- Various standard colours are available

Note: GICE Security Ltd supplies a range of special seals and sealing methods designed to give immediate indication of unauthorized tampering of products or properties. We supply cost effective solutions with the appropriate degree of security and protection.

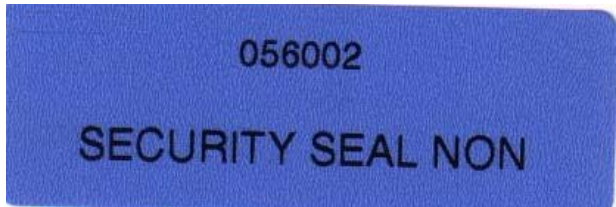
Remarks: The surface of the labels can be printed with barcodes and many other markings. Available in sheet form or rolls for packaging purposes.

GICE-880X NON-TRANSFER

Product Name	GICE-880X Non Transfer
Description	Matted Polyester with Release Paper Liner
Typical Application	Used on reusable items such as baked metal plates or outer surface of plastic boxes. Suitable to be used for die-cut process.
General Features	Prints or patterns will appear on the film when peeled off but will not be transferred on the surface when applied.
Printability	Printable
Service Temperature Range - Approximate	0 degrees to 90 degrees

GICE-8801 NON-TRANSFER SEAL

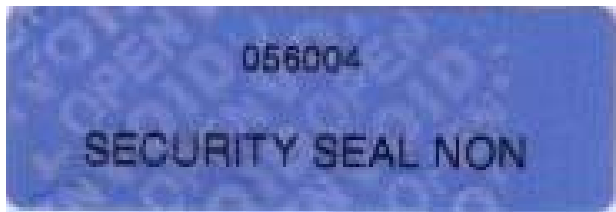
New Seal



Seal that has been tampered with



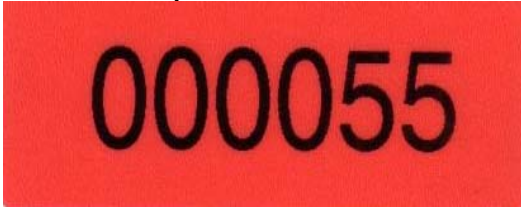
Seal that is being partially tampered with




Not tampered

GICE-8802 NON-TRANSFER SEAL

Another Example of New Non-Transfer Seal



Another Example of Seal that has been tampered with



Seal that is being partially tempered with



Not tempered



GICE-810X PARTIAL-TRANSFER

Product Name	GICE-810X Partial Transfer
Description	Matted Polyester with Release Paper Liner
Typical Application	Used to seal non-reusable glossed paper material or surface treated PE bags. Suitable to be used for die-cut process.
General Features	Traces of prints or patterns is partially transferred to the surface when seal is removed.
Printability	Printable
Service Temperature Range - Approximate	0 degrees to 90 degrees

GICE-8102 PARTIAL-TRANSFER SEAL

New Partial Transfer Seal



Seal that has been tampered with



Seal that is being partially tempered with



Not tempered



GICE-850X TOTAL-TRANSFER

Product Name	GICE-850X Total Transfer
Description	Matted Polyester with Release Paper Liner
Typical Application	Used to seal non-reusable boxes or packages. Suitable to be used for die-cut process.
General Features	A dry strip of adhesive with prints or pattern is totally transferred to the surface when applied.
Printability	Printable
Service Temperature Range - Approximate	0 degrees to 90 degrees

GICE-8502 Total-Transfer Seal

New Total-Transfer Seal



Seal that has been tampered with



Seal that is being partially tampered with



Not tampered

GICE-8501 TOTAL-TRANSFER SEAL

Eg: envelope security seals
New Total-Transfer Seal



Seal that has been tampered with

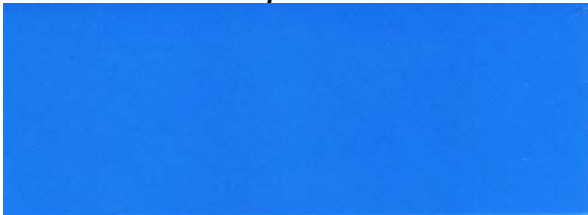


GICE-660X TOTAL-TRANSFER SECURITY TAPE

Product Name	GICE-660X Total Transfer Security Tape
Description	Tape Series Glossed Polyester without Liner
Typical Application	Used to seal non-reusable boxes or packages.
General Features	A dry strip of adhesive with prints or pattern is totally Transferred to the surface when applied.
Printability	Non-Printable
Service Temperature Range - Approximate	0 degrees to 80 degrees

GICE-6601 Total-Transfer Security Tape

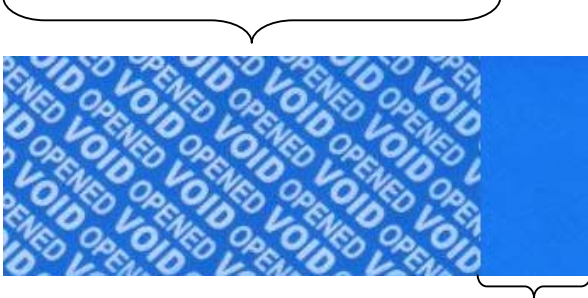
New Total-Transfer Tape



Tape that has been tampered with



Tape that is being partially tempered with



Not tempered

GICE-6602 TOTAL-TRANSFER SECURITY TAPE

150MM SERIAL NUMBERING SECURITY TAPE.

New Total-Transfer Tape



Tape that has been tampered with



Tape that is being partially tampered with



Not tampered

GICE-360X TOTAL-TRANSFER SECURITY TAPE

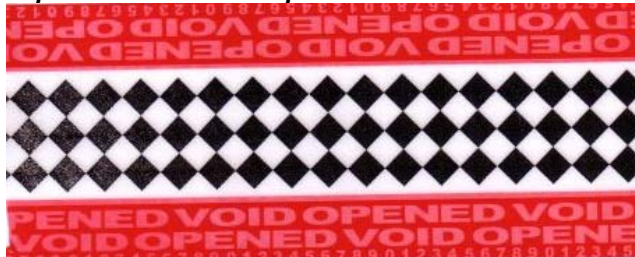
Product Name	GICE-360X Total Transfer Security Tape
Description	Tape Series without Liner
Typical Application	Used to seal non-reusable boxes or packages.
General Features	A dry strip of adhesive with prints or pattern is totally Transferred to the surface when applied.
Printability	Printable on reverse-side subject to MOQ
Service Temperature Range - Approximate	0 degrees to 80 degrees

GICE-360X TOTAL-TRANSFER SECURITY TAPE

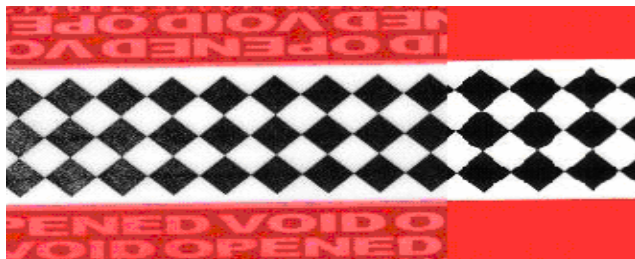
New Total-Transfer Tape



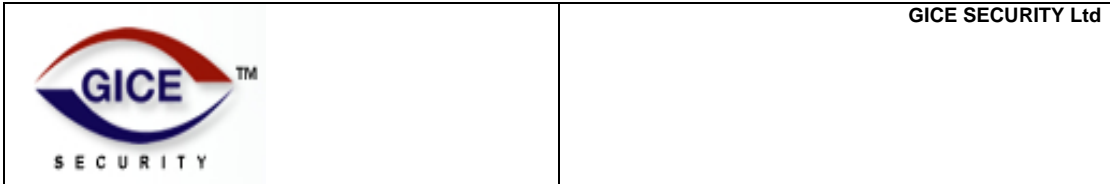
Tape that has been tampered with



Tape that is being partially tampered with



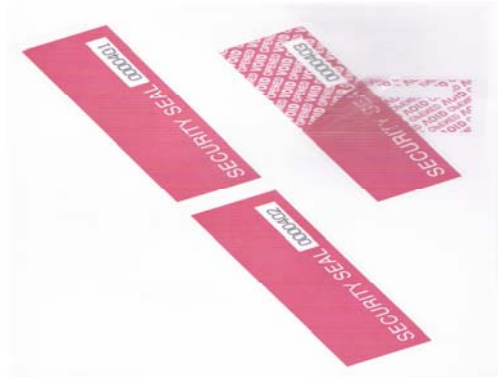
Not tampered



Important Notes:

Please note characteristics described above is influenced by different environmental conditions such as surface cleanliness. It is best to test effectiveness of the seals by trying them out on the actual surfaces. Advisable not to peel adhesive security seals immediately after application so as to allow proper adhesive bonding on the surfaces.

Colour Legend : Last letter "X" represents colour code - 1/Blue 2/Red 3/Green 4/Yellow 5/Silver 6/Purple 7/Transparent 8/White



PACKING LIST FOR GICE 660X

(linerless, total transfer packaging tape with VOID/OPEN security message of SINGLE color)

Roll Size: 48mm x 60meter
MOQ: 66 rolls
Packing: 350 x 550 x 350 mm carton of 66 rolls (approx. dimensions)
Gross Wt: 23.0 kg

(linerless, total transfer packaging tape with VOID/OPEN security message of SINGLE color, and 150mm serial numbering)

Roll Size: 48mm x 60meter
MOQ: 66 rolls
Packing: 350 x 550 x 350 mm carton of 66 rolls (approx. dimensions)
Gross Wt: 23.0 kg

(linerless, total transfer packaging tape with VOID/OPEN security message of SINGLE color , 150mm perforation)

Roll Size: 48mm x 60meter
MOQ: 66 rolls
Packing: 350 x 550 x 350 mm carton of 66 rolls (approx. dimensions)
Gross Wt: 23.0 kg

(linerless, total transfer packaging tape with VOID/OPEN security message of SINGLE color, 150mm serial numbering/perforation)

Roll Size: 48mm x 60meter
MOQ: 66 rolls
Packing: 350 x 550 x 350 mm carton of 66 rolls (approx. dimensions)
Gross Wt: 23.0 kg

OTHER colors and lengths prices upon request.

Security Seals – Stock Types