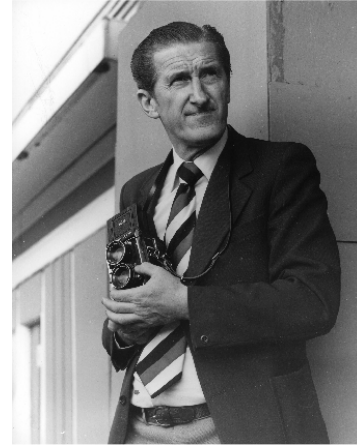


**Contact: Karon Crosby**  
KC Public Relations Media  
Phone 818.261.0334  
Fax 323.656.1120

8101 Willow Glen Rd  
Hollywood, Ca 90046  
karon@kcprm.com  
www.kcprm.com

## Harry Goodwin

# Press Release



Harry Goodwin to be featured in the 'Beatles on the Balcony' exhibition at the National Portrait Gallery, London, commencing July 5<sup>th</sup> through October 22<sup>nd</sup> 2006.

In celebration of the Beatles, the National Portrait Gallery will display a fascinating and diverse selection of classic, rare, and previously unseen photographs. The images were chosen from a celebrated group of famous photographers who helped define the group's public image.

### **London, England:**

June 14, 2006-The National Portrait Gallery's Beatles' exhibit will feature over 40 of the most significant photographs capturing the essence of the Beatles and their role in music history. The esteemed photographers include Harry Goodwin, Dezo Hoffmann, Linda McCartney, Terry O'Neill, Robert Whitaker, David Bailey, Philip Townsend, and other notables.

Harry Goodwin (the still photographer at 'Top Of The Pops' for nine years from 1964 to 1973) captured historic images of Paul McCartney, Ringo Star, John Lennon, and George Harrison. In addition to photographs of the Beatles as a group, Harry photographed the four musicians during their subsequent careers when they later formed other bands and performed as solo artists.

Harry Goodwin's involvement in this exhibition will mark the second time his Beatle photographs have been displayed at the National Portrait Gallery. In February 2003, in celebration of John Lennon being voted #10 (by national vote) from "one hundred Britons", Goodwin's portrait of Lennon was selected for inclusion in the NPG/BBC publication 'Great Britons: The great debate'. The competition was partnered by BBC Television who made television programmes of the ten most popular subjects cut down from an initial list of 100.

Goodwin's works were previously displayed at the National Portrait Gallery's most popular show to date, 'Icons of Pop' in 1999. Harry Goodwin's photographs of Sandie Shaw and Tom Jones were part of that 1999 exhibition which attracted over 220,000 visitors.

The 'Beatles on the Balcony' exhibition coincides with a partner exhibition featuring the works of Angus McBean (1904-1990). An illustrated catalogue by curator Terence Pepper and prefaced by Sir Paul McCartney will be available. Special thanks to Dave Brolan (picture editor for special projects on 'Q' and 'Mojo' magazines).

National Portrait Gallery, St. Martin's Place, London WC2H0HE. Information +44 20 7312 2463 [www.npg.org.uk](http://www.npg.org.uk)

**For Release 9 a.m. PST, June 14, 2006**