



## TWO STORY MODULAR

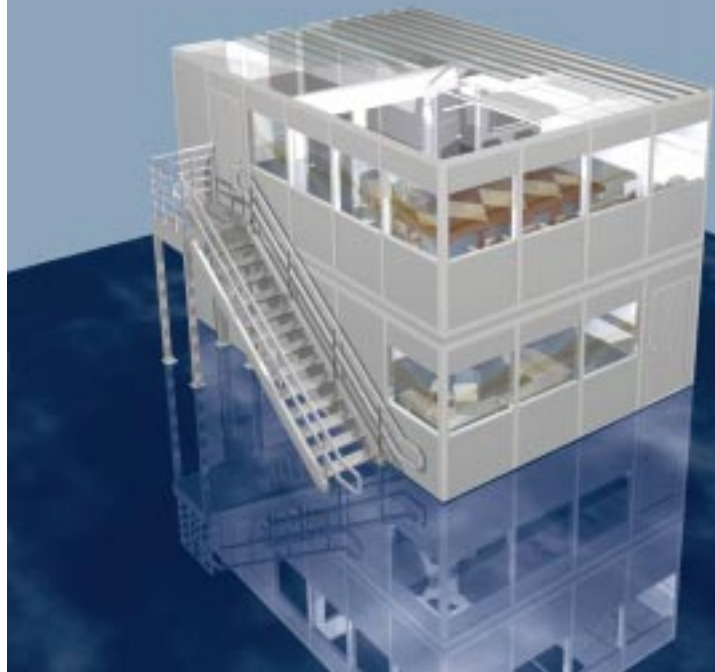
When your company is growing and floor space is limited, Allied Modulars' Two Story Enclosures are the perfect solution.

Our Two Story Enclosures are engineered to utilize that otherwise unused airspace, creating the ideal work environment.

Allied Modular's Two Story Modular Enclosure, with its advanced framing system, can easily be designed and configured to meet your needs.

You will find our Integra 200 and Integra 400 wall systems both rugged and durable yet attractive. Available in a variety of colors and capabilities including; integrated electrical, phone and data, our Integra line is outstanding for all applications.

Allied Modular's customer service specialists guarantees that your project will be a success from start to finish.



# Two Story Enclosures

featuring

integra200

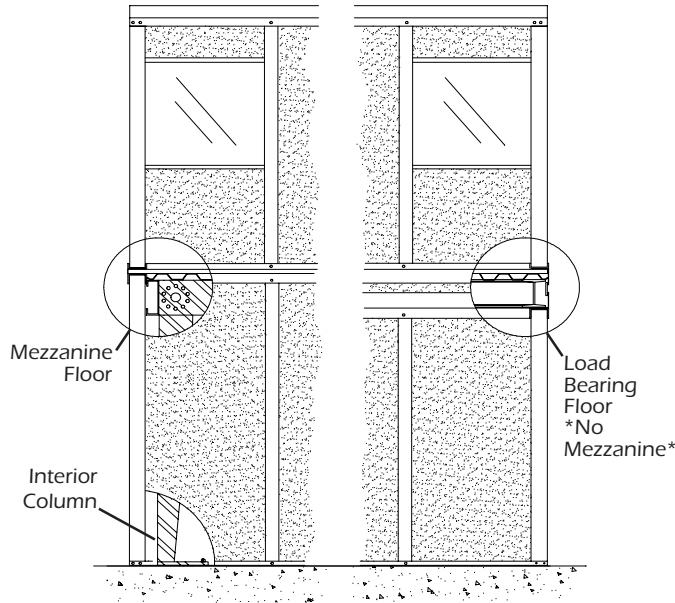
integra400

## FEATURES & BENEFITS

- 100% Reusable and Relocatable
- Save Valuable Floor Space
-  UL Listed Wall System
- Variety of Panel Colors Available
- Fire Retardant - Class A
- Sound Absorbing Capabilities
- Built With or Without Mezzanine
- Anodized Aluminum Eliminates Paint Chipping and Corrosion.
- Easily Cleaned Durable Finishes

## OPTIONS

- Worldwide Installations
- Door-to-Door Delivery
- Shelves and Cabinets
- Dry Erase and Chalk Boards
- Lever Handicap Hardware
- Electrical, Phone and Data
- Dual or Single Pane Windows
- Door Closers
- Door Windows
- Tile Flooring and Carpet
- Wall Mount or Central A/C



## SPECIFICATIONS

### PANELS

- Integra 200 = 2" wall system
- Integra 400 = 4" wall system
- All panel cores will consist of a polystyrene foam.
- Panel facings shall be a minimum thickness of 1/8"
- Standard panels shall be a maximum of 48" in width

### DOORS

- Doors shall be 1-3/8" or 1-3/4" hollowcore or solidcore

### HARDWARE

- Hardware shall be Allied Modular standards

### FRAMING MEMBERS

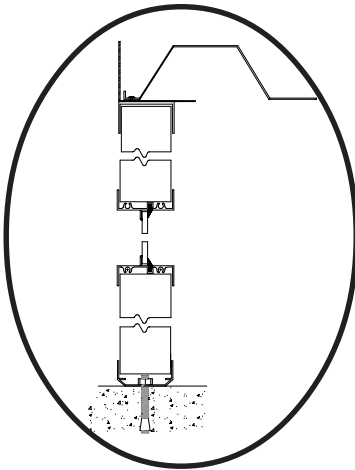
- Framing shall be a minimum thickness of 0.62
- Available in Clear Satin or Bronze

### GLASS

- Windows shall be solid or sliding with 3/16" clear tempered glass

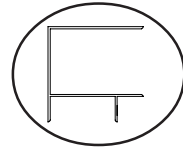
### GENERAL

- Engineered for Seismic Zone 4
- Meets or exceeds all U.B.C., B.O.C.A. and N.E.C. Building Codes.

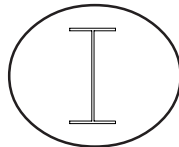


STANDARD SECTION

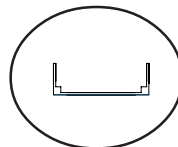
## STANDARD FRAME DETAILS



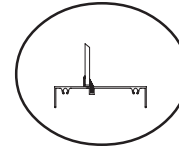
CORNER POST



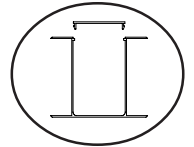
H-POST



FLOOR CHANNEL



WINDOW FRAME



RACEWAY

## STANDARD PANEL FINISHES

(all cores shall consist of polystyrene foam)



VINYL GYPSUM



FRP



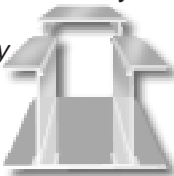
STEEL OR ALUMINUM

## APPROVED

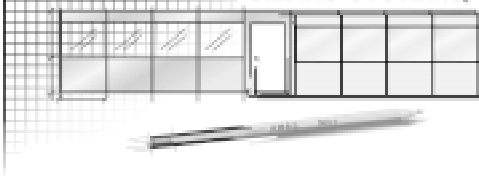


UL Listed Raceways

Electrical Ready  
Phone Ready  
Data Ready  
Internet Ready



ALLIED MODULAR BUILDING SYSTEMS, INC.



DISTRIBUTED BY:

