



Seaforth Marine group showcases Tradition Series at Monaco

More space, more choice and more stylish comfort distinguish yard's designs for luxury trawler yacht market that now range from 42' to 78'

(MAPLE RIDGE, BRITISH COLUMBIA – September 20, 2006) Seaforth Marine Group's Tradition series of luxury trawler is setting a new standard for offering more space, more choice of layouts and more stylish comfort in the passagemaking market, says Company VP of Marketing David James.

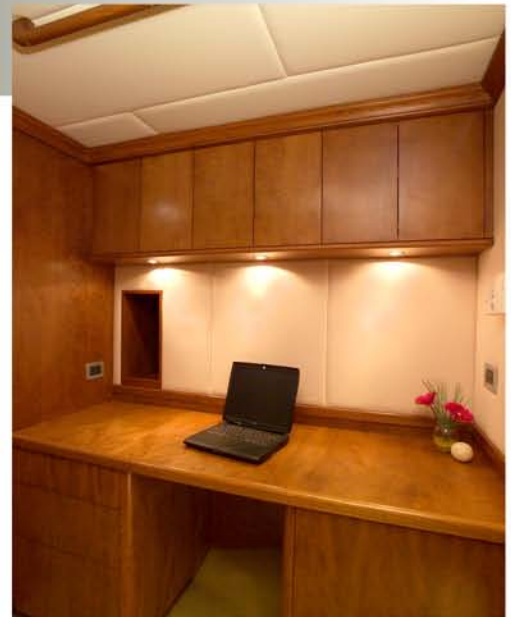
The series, launched in 2003, now offers designs for eight different models from 42' to 78', with each offering significantly more volume than comparable makes in their respective categories. The designs also give owners more choice in configuring space to meet their cruising needs.

"People who buy a luxury trawler want to spend more time at sea and Seaforth gives them more living room on the water – and more luxuriously appointed space to live in," says James. "We've also created accommodation options that let them live exactly the lifestyle they prefer."

For example, a couple who want to virtually live at sea can do so with an on-board office design that lets them conduct their business – or engage in their favourite hobby – from their "home on the water". Those who choose to make their vessel a gathering spot for family and friends can also make their vessel a home away from home that can sleep up to nine.

In fitting out all that space, owners can choose from three different interior design schemes for joinery and woodwork: traditional, contemporary and eclectic. The understated traditional look features cherry with dark corian or granite counters. The contemporary has a more minimalist look, with deeper, richer wood tones and white counters for bold contrast. And the eclectic – very popular in Europe – features a lighter, blonder wood such as maple or anagre.

In the end, Seaforth's practice of giving Tradition buyers considerable latitude in customizing the interior means that each vessel in the series is unique. >>>





Safety in Style

Seaforth's flexibility in styling is made possible by the Tradition series underlying skills in design and constructing the safest and strongest possible luxury trawler yachts. The Tradition hull, a modified Canadian fisheries patrol vessel, has been tank tested at the University of British Columbia to ensure option balance, seaworthiness and reliability. Seaforth's adaptation have served to make the hull – and the ride – that much more comfortable.

Seaforth has also been innovative in how it produces the Tradition series. Each vessel is Canadian built in China. This means that senior Seaforth management and shipwrights are on the ground in China overseeing construction every step of the way. The vision is always the same: to produce seaworthy luxury trawler yachts of such strength, style and comfort that every passage the owner makes will be as safe and pleasurable as possible.

About Seaforth

Seaforth Marine Group is a full-service company with offices on Canada's west and east coasts and in Europe, providing globally recognized yacht design, construction, marketing, and refit and repair services. Seaforth specializes in the design and production and custom FRP motor and sail pleasure craft from 50' to 120' and offers four different series: Tradition 42' to 78', Islander 36' to 40', Harling 80' to 115' and Northport 58'. (www.seaforthmarine.com)

For more information, please contact: David James @ 604 466 7094

