

**TRAINING & CERTIFICATION  
PROGRAM CURRICULUM  
2006/2007**



Sydney Opera House at Night

**zdu**

ZERO DELTA UNIVERSITY

© 2005-6 Zero Delta University. Zero Delta University is a wholly owned subsidiary of Synthesis Holdings, Inc. Zero Delta, the zdu logo, and 'Never Stop Learning. Keep on Moving.' are trademarks of Synthesis Holdings, Inc. All Rights Reserved.

# **YOUR GREATEST PERFORMANCE IS REALIZED THROUGH CONSISTENT TRAINING, NEVER-ENDING KNOWLEDGE & EXPERIENCE ACCUMULATION, AND DISCIPLINED APPLICATION OF EXPERTISE**



Enterprise Alignment is a state that is pursued by many people throughout the organization. Enterprise Architecture is a practice whereby multiple domain experts work together to create an integrated strategy and set of execution-level programs that are designed to achieve enterprise alignment.

Achieving enterprise alignment is no simple feat. You require not only domain-specific knowledge but also the skills necessary to achieve a holistic view of the enterprise - across the organization, processes, and technology.

Zero Delta University's training and certification program is carefully and studiously constructed in a manner that provides you with the right knowledge at the right time.

While you may have taken courses that address similar knowledge areas, you probably haven't followed a structured model that is designed to follow an enterprise-level methodology.

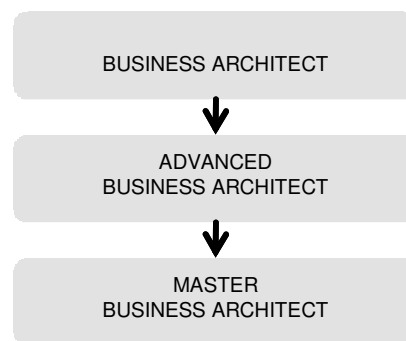
The value of Zero Delta University's training and certification program is realized through direct knowledge accumulation and experience working with others to tackle common challenges and opportunities.

# ZERO DELTA BUSINESS ARCHITECT ROLE

The Business Architect is a role-type within the context of an overall enterprise architecture role player model. The Business Architect is responsible for defining, designing, and managing the on-going enterprise model as it relates to the (i) enterprise strategy; (ii) enterprise tactics; and, (iii) operational strategy, which is composed of the (iiia) organizational assets and investment structure, (iiib) organizational model and design, and (iiic) enterprise process model and process structures internal and external to the organization.

The Business Architect Level Structure is designed according to an increasing level of knowledge accumulation for this role-type.

A Business Architect advances from a beginning level of business architecture knowledge to an advanced level; once this level is attained, the Business Architect masters this domain by achieving a mastery-level of knowledge accumulation and is finally designated as a Master Business Architect.

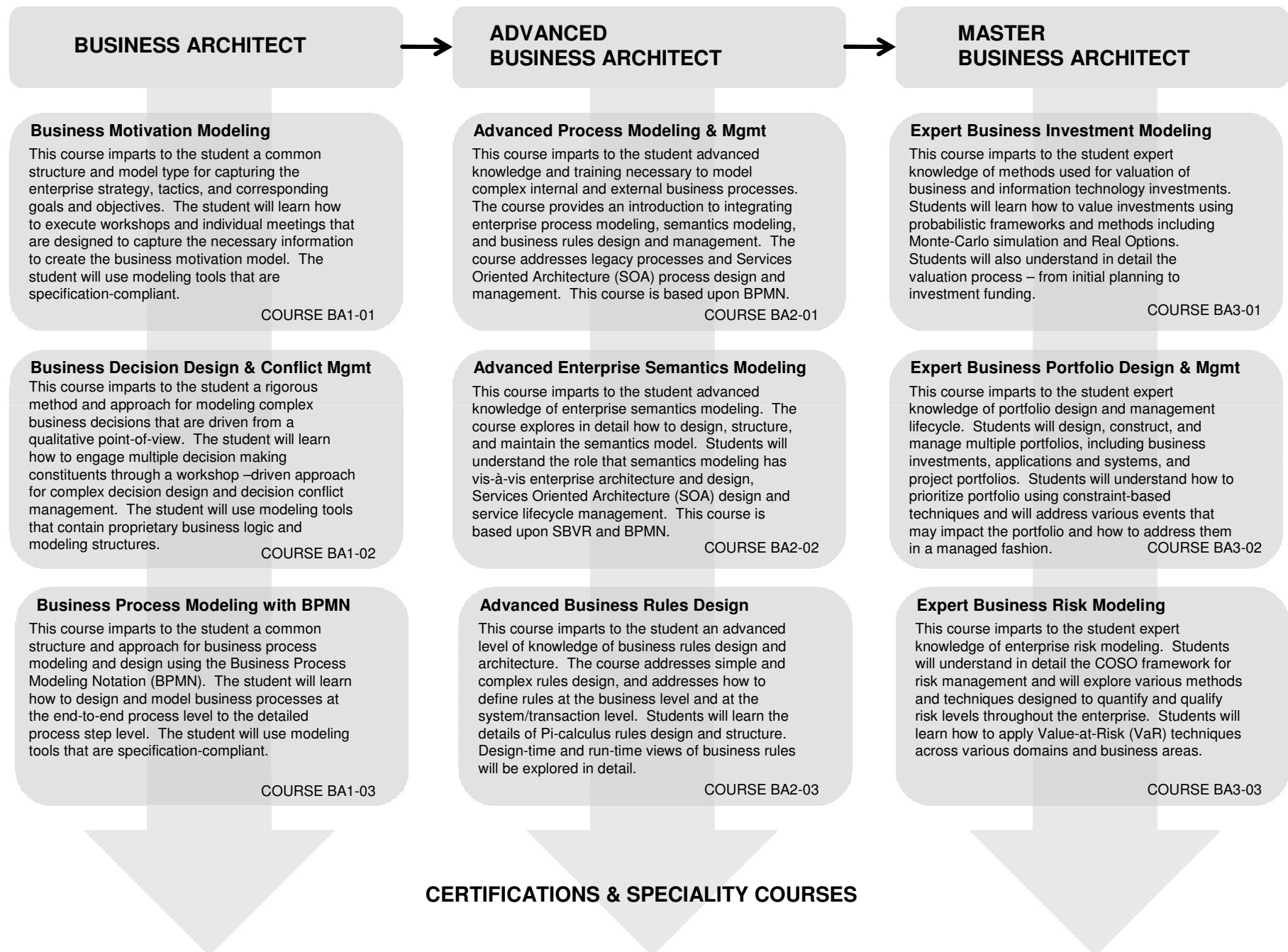


The Business Architect has an instrumental role in helping the enterprise to clearly define strategy level details and assists with the transition from strategy to execution.

At the highest levels, the Business Architect is involved with:

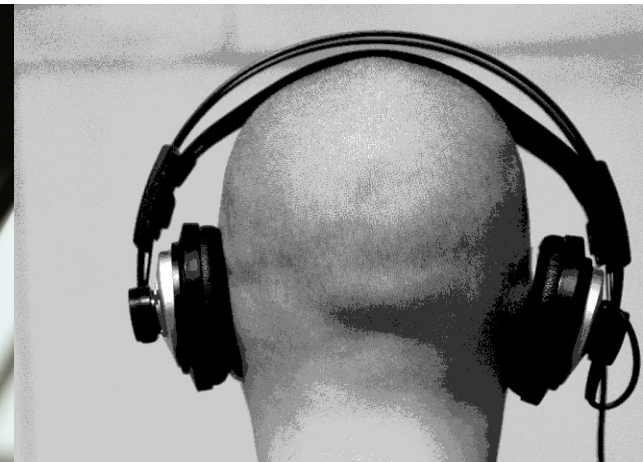
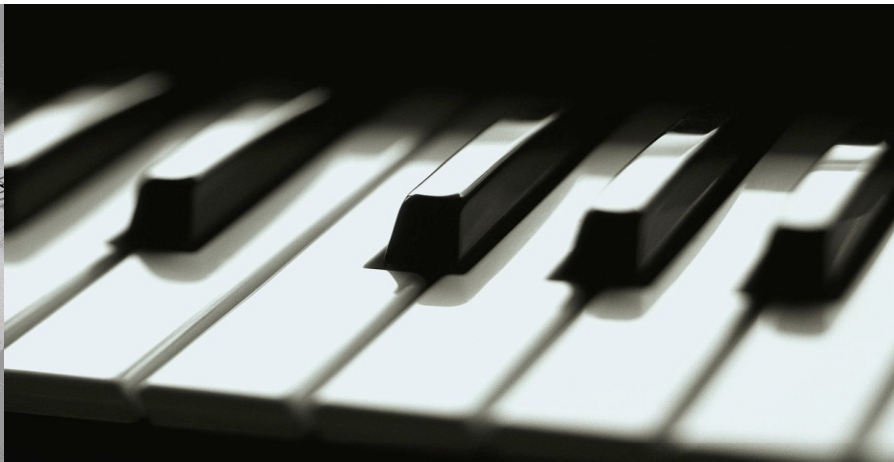
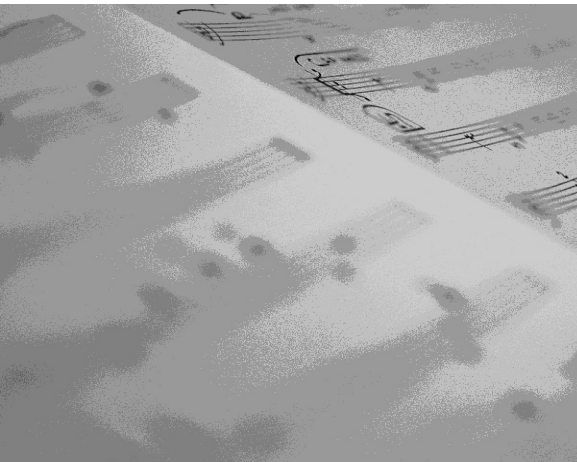
- Capturing high-level and detailed enterprise strategy information so that further analysis and decision making can take place;
- Conducting detailed analysis to determine the best courses of action to take vis-à-vis strategic opportunities and risks;
- Coordinating the enterprise decision making process and assisting with the resolution of conflict or other barriers that delay the transition to execution;
- Designing and architecting current and future views of the enterprise across multiple dimensions;
- Ensuring that strategic details are carried over and realized through initiative and program execution; and,
- Developing detailed performance metrics and models to gauge the effectiveness of enterprise strategies and tactics.

# BUSINESS ARCHITECT COURSE & LEVEL STRUCTURE





# COMPOSE. CONDUCT. PERFORM.



Zero Delta University provides you with the knowledge and information you need to successfully align and integrate your enterprise.

## TRAINING & CERTIFICATION WITH PRESTIGE

The structured approach to knowledge accumulation and hands-on experience transfer enables you to not only learn, but apply what you learn in real-life settings.

Zero Delta University's course structure allows you to follow a gradual path of advancing knowledge exposure. You learn what's important in the early stages of aligning your enterprise and you continue to grow and enhance your capabilities at a pace that is comfortable to you.

Upon successful completion of course and level exams, you will earn one of the industry's most prestigious certifications. Your peers will know that you've achieved a level of expertise that is directly contributing to the value of your organization.

Contact us today for additional course details or to schedule your next course in a city near you.

Never stop learning.  
Keep on moving.™

[www.zduniversity.org](http://www.zduniversity.org)



CHICAGO

+ [1] 312.235.2390

HONG KONG

+ [852] 8199.9540

LONDON

+ [44] 20.7993.2190

SYDNEY

+ [61] 2.8080.2780

**zdu**  
ZERO DELTA UNIVERSITY

211 East Ontario Street; 18<sup>th</sup> Floor  
Chicago, Illinois 60611 U.S.A.  
m +1.312.235.2390  
f +1.312.235.2391  
[www.zduniversity.org](http://www.zduniversity.org)