

The Retail Distribution Management Solution (rDMS) is designed to fit the enterprise rather than forcing it to adapt to the software. rDMS utilizes a best-practices process model, along with a best-of-breed trouble (exception detection/notification/resolution) facility, to leverage advance shipment information and optimize the retailer's investment in a centralized distribution capacity.

# Retail Distribution Management Solution

## Control tower visibility into warehouse and distribution operations

To be successful in today's competitive market, retailers must provide a continuous, uninterrupted flow of merchandise to the sales floor. Merchandise that is stranded in distribution centers or on trucks or vendor docks cannot be sold, and has an adverse impact on customer satisfaction and revenue. Increasingly relentless competition and unforgiving customers demand that successful retail companies optimize every aspect of distribution flow.

Compliance Networks' Retail Distribution Management Solution (rDMS) is a powerful enabler for reducing supplier-to-selling-floor cycle time, streamlining labor costs, and improving accuracy and floor readiness with unobstructed visibility into inventory. Unlike typical warehouse management systems (WMS) architected for traditional manufacturing or wholesaling environments, rDMS provides visibility and control that extends beyond the four walls of the warehouse to cover the entire retail enterprise. rDMS offers a control tower view of distribution operations, as well as unprecedented power to improve every operational detail.

## Optimizing flow to increase shareholder value

rDMS fully supports and manages the activities of central distribution centers, third-party logistics providers, and store receiving operations in both direct-store-delivery (DSD) and central distribution models. The solution also supports both pre- and post-distribution purchasing environments. rDMS introduces a new paradigm in distribution management, offering a single-source view of the retail logistics organization. Architected to the retail flow distribution model, the design emphasis on retail-centric supply chains provides superior execution of vendor performance verification, floor-ready service support, and single-platform, integrated store receiving functionality.

With unprecedented flexibility, rDMS supports a wide variety of retailer practices, ranging from no universal product code (UPC) labels to cutting edge technologies such as radio frequency identification (RFID). rDMS offers an easy implementation, allowing the retailer to evolve with the technology at its own pace.

rDMS effectively manages retail enterprise distribution activities:

- Real-time event notification
- Parameterized task management
- Opportunistic cross docking
- Carton/pallet/garment-on-hanger (GOH) receiving capabilities
- Integrated return-to-vendor (RTV) support
- Advance shipment notice (ASN) receiving
- Planned vs. expected vs. actual ASN reconciliation
- Staging
- Proactive problem identification and resolution
- Verification
- Transfers
- Vendor performance verification
- Integrated store receiving
- Replenishments
- Container tracking
- Pre-/post-distribution
- Conveyor sorting system interfaces
- Productivity reporting
- Floor-ready service support

# About Compliance Networks

Compliance Networks is a leading provider of solutions that enable retail enterprises to optimize flow within their supply chain, and make informed supply chain decisions that ultimately increase shareholder value.

Compliance Networks' suite of retail-centric distribution management solutions enables greater supply chain efficiencies by automating key processes, including vendor compliance and collaboration, vendor scorecards and certification, chargeback management, purchase order fill rate and accuracy measurement, and supply chain alerts.

rDMS is built on an open-source platform that results in faster, less disruptive, and therefore less expensive, implementations. The solution is ideal for both middle and large-scale retail distribution environments with central distribution centers, third-party logistics providers (3PL) or store receiving operations in both DSD and central distribution models. Windows and Linux platforms provide agile and affordable deployment options.

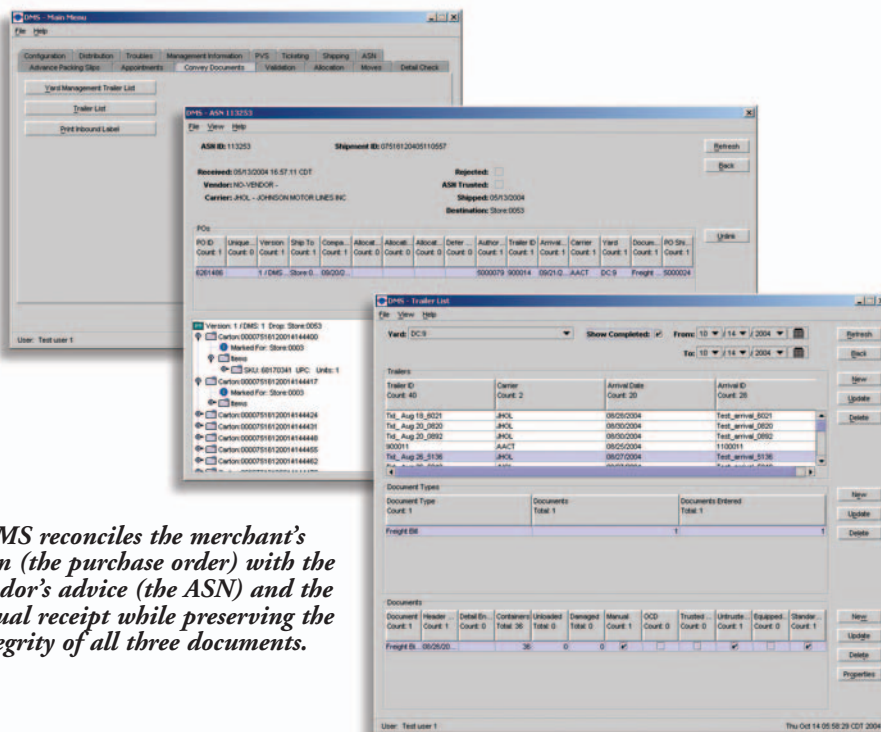
Easily configurable, without sacrificing retail best practices, rDMS helps balance operational costs while facilitating effective, controlled execution of distribution. Real-time inquiry and graphical analysis enables proactive decision making about merchandise and labor movements, as well as distribution capacity.

## Comprehensive rDMS features and benefits:

- Performance analysis tools
- Advanced work flows
- Dynamic inventory control
- Radio Frequency (RF) and bar coding collection data
- RFID-enabled data collection
- Rapid return on investment and low implementation cost

## Collaborative vendor compliance substantially reduces costs

rDMS is fully integrated with Compliance Networks' Retail Compliance Management Solution (rCMS) to extend vendor compliance, chargeback management and supply chain visibility across the retail enterprise.



*rDMS reconciles the merchant's plan (the purchase order) with the vendor's advice (the ASN) and the actual receipt while preserving the integrity of all three documents.*

**rDMS tracks and optimizes the flow of merchandise and information throughout the supply chain, enabling retailers to:**

- **Capitalize** on opportunistic cross docking to dramatically improve service levels and reduce operating costs
- **Proactively** identify problems with shipments to facilitate resolution management
- **Increase** productivity and throughput with existing labor and space resources
- **Reduce** direct and indirect labor costs
- **Shorten** cycle times, improving customer satisfaction

## For more information, contact:

Compliance Networks  
11 Corporate Hill Dr., Suite 111  
Little Rock, AR 72205  
(501) 801-0014 ext. 120  
[info@compliancenetWORKS.com](mailto:info@compliancenetWORKS.com)  
Or visit our Web site:  
[www.compliancenetWORKS.com](http://www.compliancenetWORKS.com)

