



“Flow is the primary common cause for what ails the healthcare system.”

Don Berwick, MD, MPH
Institute for Healthcare Improvement

Patient Flow Logistics and Tracking Software



Raising Efficiency. Raising Capacity. Raising the Bar.

Statcom Patient Flow Logistics and Tracking Software

Improving Your Patient Throughput and Capacity Management

Hospitals are struggling to manage their patient capacity challenges, and healthcare executives are searching for solutions to optimize patient throughput and maximize profitability, all in an effort to provide the best patient care possible. StatCom was developed specifically to address these challenges. This unique healthcare IT solution provides an immediate and comprehensive view of the entire patient flow process with real-time tools to manage that flow within and between departments.

StatCom’s patient flow logistics and tracking software informs physicians, staff, and family as to the location and status of the patient’s progression through the care process. This enables healthcare organizations to anticipate demand and manage bottlenecks more effectively. Operational visibility increases, communication and team performance is enhanced, and patient care hand-offs are turned into handshakes. As a result, financial performance is maximized while greatly enhancing the patient experience.



About StatCom

StatCom’s patient flow logistics and tracking software was developed to improve hospital-wide communications, patient throughput and capacity management. This unique healthcare IT solution provides an immediate and comprehensive view of the entire patient flow process with real-time tools to manage that flow within and between departments. Operational visibility increases, communication is enhanced, and patient care hand-offs are turned into handshakes. As a result, financial performance is maximized while greatly enhancing the patient experience. A number of leading and innovative hospitals in the U.S. are using StatCom to address their patient flow challenges.

StatCom is a subsidiary of Jackson Healthcare Solutions, a group of companies focused on providing the healthcare industry with innovative people resource and IT solutions.

Visit our website at www.statcom.com and click on the ambulance to experience how StatCom can help you manage capacity and eliminate bottlenecks.

3650 Mansell Road, Suite 300
Alpharetta, GA 30022
800.930.0870
www.statcom.com

Patient Flow Logistics and Tracking Software

Why Choose StatCom?

To Get Everyone on the Same Page

StatCom coordinates patients and flow tasks from admission through discharge, including bed management, environmental services, transportation, patient LOS management, OR patient flow, ED patient flow, and discharge coordination. As a result, management and frontline staff gain real-time visibility into their operations.”

The system can be implemented in months, not years, and complements existing healthcare information systems. User training requirements are minimal, allowing widespread deployment. The system provides real-time status information in a variety of user friendly display formats and devices, and communications and alerts are tailored to specific requirements. StatCom’s experienced team provides on-site operational consulting, as well as support and guidance for a rapid and successful implementation.

StatCom Benefits & Features

- Improved communication and team performance
- Improved patient, physician, and staff satisfaction
- Patient care hand-offs turned into handshakes
- Resolution of patient flow bottlenecks
- Hospital-wide patient throughput visibility and tracking information all in real-time
- Business activity monitoring dashboards provide complete visibility
- Built on proven technology
- Complements existing HIS and clinical systems
- Configurable and scalable
- Rapid deployment and ROI
- Incorporates data from a broad array of user-friendly input devices



Raising Efficiency. Raising Capacity. Raising the Bar.

Turn Handoffs into Handshakes

Improve Performance and Increase Patient Satisfaction

Thousands of patient handoffs occur in hospitals every day, and devastating mistakes can happen during them. A 2005 study found that nearly 70% of preventable hospital mishaps occurred because of communication problems, and other studies have shown that at least half of such breakdowns occur during handoffs.

StatCom closes the gaps between hospital areas and technologies, and turns your existing technology investment into a truly useful and cohesive enterprise solution. The StatCom patient flow logistics and tracking solution goes beyond what any EMR or HIS system provides because it was designed from the beginning to be a real-time communications and workflow tool.

How it Works

The StatCom application creates a common workflow infrastructure across the healthcare system. Built on proven technology, it incorporates a powerful workflow engine, messaging engine and rules based intelligence. StatCom's dynamic technology captures patient flow and tracking data from a variety of sources and input devices and applies logistical intelligence to this data so that operational processes are optimized.

StatCom maps directly to a hospital's processes and information system. Information enters StatCom seamlessly through a variety of sources including intuitive touch pads, wireless button devices, standard web forms, VOIP, or interactive voice recognition (IVR). It also interfaces directly from HIS and RFID tracking systems.



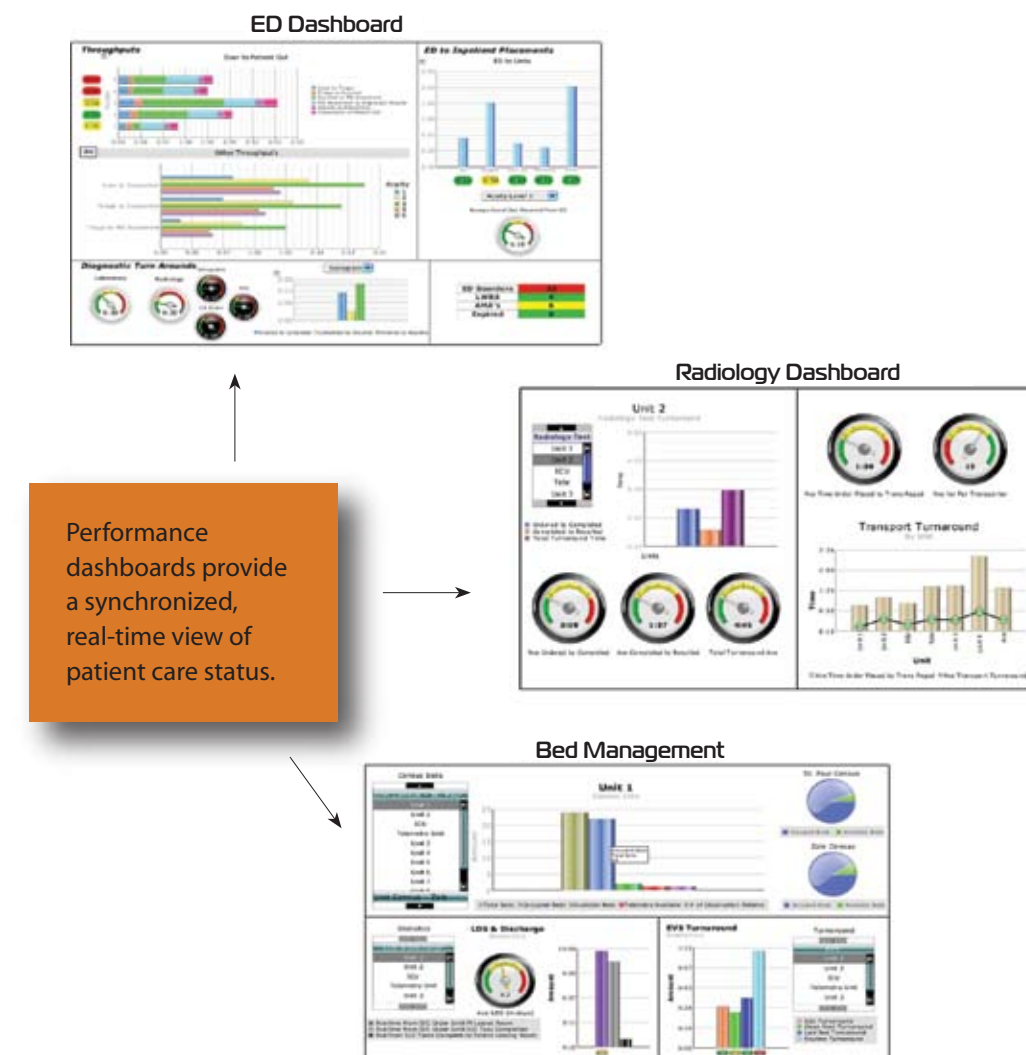
Business Activity Monitoring for Healthcare

Synchrony of Care

StatCom's Business Activity Monitoring for healthcare has been designed to help hospital staff proactively respond to key process information as it occurs. These real-time performance dashboards provide up-to-the-minute updates on patient location and patient-care status, which enables healthcare executives and department managers to recognize trends before they occur.

Information is compiled from existing clinical systems and from location tracking technologies to create a synchronized, real-time view on patient care status. Hospital staff at all levels – from support staff, clinicians, and managers to hospital administrators and executives – are able to monitor hospital operations and resources, enabling them to determine what actions to take immediately.

Business Activity Monitoring provides executives with a summary of key indicators relative to operational performance. In addition, the emergency department has a real-time view into key operational performance variables, bed managers a real-time view of bed availability and discharge status, and case managers gain a real-time view of patient throughput.



“Both CEOs and mid-level managers should provide visionary leadership in promoting the use of patient flow and operations management approaches to improve hospital efficiency.”

-- From the 2006 report, Hospital-Based Emergency Care: At the Breaking Point