

Single Source Solution Provider  
for all your Technical Requirements



“Advanced technology  
to deal with  
advanced materials.”

**We offer new equipment manufactured by::**

- E.A.R.'S OWN MANUFACTURED STC ID SAW WITH ALLEN BRADLEY PLC
- PR HOFFMAN
- PETER WOLTERS - SPEEDFAM
- ARW-DIAMOND WIRESAW

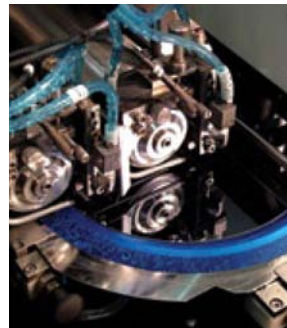
**We offer refurbished and rebuilt equipment as follows::**

- DISCO DICING SAWS, WAFER GRINDERS/MOUNTERS
- STRASBAUGH CMP TOOLS, BACKGRINDERS, EDGE PROFILERS LAPPERS AND OPTICAL POLISHERS
- SPEEDFAM LAPPERS AND POLISHERS
- PETER WOLTERS LAPPERS & POLISHERS, FINE GRINDERS
- K&S DICING SAWS
- MEYER BURGER ID SAWS
- STC ID SAWS & EDGE GRINDERS
- DAICHI SEIKO EDGE GRINDERS
- CRANE LAPMASTER LAPPERS & POLISHERS
- LOGITECH TABLE TOP POLISHERS
- SYSTEM SEIKO, DOUBLE-SIDED FINE GRINDERS

**PROCESS DEVELOPMENT**

EAR is pleased to announce its expansion into exotic materials and hard-to-dice substrates in our quest to aid customer applications. When you bring us your very difficult project and ask us to assist in its development, you can be assured that we give full attention to your specific application and dedicate all our resources to the successful completion of your process.

We have the finest state of the art dicing saws available for the purpose of dicing your material to sub-micron accuracies if required.



Our engineering team is readily available for design, re-work, re-design, and testing of your application. Our goals are exactly the same as yours, which is to work continuously on your application until completed in a 100% satisfactory state within the timeline allotted and within your R&D budget.

Specialty materials and brittle substrates are sometimes difficult to work with and achieve results. Here at EAR we have developed advanced technology to deal with these advanced materials.

**WE IDENTIFY THE BEST TECHNOLOGIES TO FIT YOUR GOALS AND BUDGET.  
WE THEN ENSURE THOSE TECHNOLOGIES CONTINUE TO WORK WELL INTO THE FUTURE.**

**WE STRIVE TO CREATE END-TO-END SOLUTIONS THAT MEET OUR CUSTOMERS' NEEDS AND EXCEED THEIR EXPECTATIONS.**

**In today's fast-paced business environment, efficient, expert and expedient solutions to systems, data and technical issues are crucial.**

If precision is vital and material saving is critical, we invite you to step into our universe of affordable machines redesigned to achieve both. At E.A.R., our equipment systems are a cut above the norm, essential to the rigorous demands of superconductor fabrication.

Various applications in nano-technology have been introduced into the world of super conductors and at EAR we know how to overcome the obstacles in slicing and dicing of the materials involved.

If accuracy and speed are required in your particular process, we are fully equipped to handle the job for you.



### **ELECTRONIC MATERIALS ABRASIVE TECHNOLOGY**

Equipment Acquisition Resources Inc. is a unique worldwide source for all our customers needs in electronic materials abrasive technology.

We offer complete rebuilding services on all makes of dicing saws, polishers [both CMP tools and conventional wafer polishers], lapping machines, slicers, backgrinders, and wire saws. We also offer world wide technical support on all these tools, as well as training, installation, maintenance, and product support from our vast inventory of parts and machinery. E.A.R. Inc. also offers specialized process engineering & development services for our

customers applications and we are dedicated to the success of our customers through diligent R&D in their behalf.

### **DIRECT FINANCING**

E.A.R. Inc. is currently offering Direct Financing not only on Equipment Purchases, but also on our Process development and Contract Manufacturing. We are striving to make your business our top priority and will continue to meet our customers needs. Inquire about our Low cost Leasing/ Financing Programs today!



## COMPANY PROFILE

# COMPANY PROFILE

Equipment Acquisition Resources, Inc. (E.A.R.) is one of the world's largest suppliers of lappers, polishers, slicers, grinders and dicing saws for crystalline materials. Our remanufactured equipment out-performs even new machines in finishing accuracy and attainable material thinness. We also offer a complete process development program, which includes R&D, for the successful completion of your specific application. We will contract for the production of your product after successful development thereof. Our facilities include clean room operations for application testing, 50,000ft<sup>2</sup> of complete rebuilding areas, and more than 20,000ft<sup>2</sup> of showroom area.

At E.A.R., we aggressively purchase complete and entire plants that have been shut down. In so doing, we are able to offer a wide array of machines as well as test equipment. We invite you to offer us any and all surplus equipment you may have, and we help our customers by actively taking surplus equipment in on trade when available. Our warranty is unmatched anywhere, as it includes a full purchase price return privilege. Worldwide installation services are also part of the E.A.R. Worldwide Services Program. E.A.R.'s Financial Service Division offers turnkey financing for equipment acquisitions if requested by its customers. We offer a wide choice of financing options from leasing to direct financing. At Equipment Acquisition Resources Inc., we are a cut above the rest and we will prove it to you by seeing your project through start to finish. We understand the importance of accuracy and currently have some of the best equipment on the market today for processing your materials.



### **EQUIPMENT ACQUISITION RESOURCES, INC.**

Technical Center & Showroom  
555 South Vermont St.  
Palatine, IL 60067 USA

Local:: 847.705.7636

Fax:: 847.705.7685

Toll Free:: 888.227.5900

[web] [www.eartechnology.com](http://www.eartechnology.com)

[email] [sales@eartechnology.com](mailto:sales@eartechnology.com)