

Where are we going with this?

During the next few months Any-Port.Com Ltd. Intends to continue the present trend of adding at least one new port to our growing base every two weeks. Our goal is every major port from Sicily to Gibraltar, St. Maarten, Antigua and St. Barth's before the beginning of May 2007.

Stay connected—we will.



**Call now or email for a free two week trial.
+33 (0) 4 93 33 27 11
freetrial@any-port.com**

Phone: +33 4 93 33 27 11
Fax: +33 4 93 33 27 11
E-mail: freetrial@any-port.com



any-port



***Feeling disconnected?
Can't get it on when you want?
Internet services for yachts have just evolved...***

Broadband Wireless
Communications, Any-Port,
Any Where

www.any-port.com

Where do you want to be online?



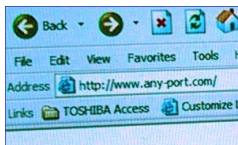
Get Connected— Stay Connected.

For too long, we in the yachting world have coped with the wonderful world of satellite or fixed landline telephony as the only reliable means of internet

and email communication. It is now becoming either increasingly more difficult, or considerably more expensive to get connected via either.

A number of ports around the world have tried WiFi, and so did we at Any-Port. However, after extensive trials we concluded it just wasn't reliable enough for our yachting clients. So we changed to more advanced technology able to connect faster, transmit further, and less likely to drop your internet connection when you really want (or NEED) it.

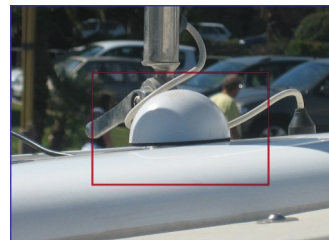
We can now offer that technology to yachts of any size in the south of France.



Any-Port vs. WiFi

	<u>WiFi</u>	<u>Any-Port</u>
Range	2—300m	2—3km +
Clients	10 – 15 per radio	200+ per radio
Channels	13 (2.4GHz)	16 (2.4GHz) + 25 (5GHz), each capable of multiple clients
Data Speeds	Restricted by channel availability and congestion	Guaranteed 2mbps down and 512kbps upstream
Frequency Competition	All other WiFi networks, commercial and private, such as on-board WiFi networks	None
Extendibility	Limited by range and channels	Unlimited

As you can see from the table, Any-Port's advanced technology has many distinct advantages over WiFi, without the need for obtrusive equipment. Our antennae measure 100mm across and less than 50mm high. When flush mounted they are often mistaken for a GPS antenna. The equipment can be installed within a matter of minutes, depending on cable runs, and all our systems arrive pre-configured.



Simply power up and you're connected.

Any-Port monitors system efficiency remotely, ensuring a higher quality of service and minimising downtime. We understand that any radio system is subject to outside influences, so we have English-speaking technicians in every port.

You can also get online at anchor, handy for busy yachts, when dock space is not readily available. Your internet use is not limited by either time or data transfer, and one monthly fee entitles you to use the service in ALL of our equipped ports.



Additionally, Any-Port will soon be launching its new VoIP service. This will include your own fixed landline telephone number (with full PBX capabilities) and calls costing up to eighty percent less than usual, with landline quality.

On-board internet is no longer a luxury, but a necessity.

Call today for a free trial.

Phone: +33 4 93 33 27 11
 Fax: +33 4 93 33 27 11
 E-mail: freetrials@any-port.com