

Bus 2007

A one-day conference to examine developments in the technology, manufacture and design of modern buses

Programme and Registration Brochure

18 September 2007

IMechE, 1 Birdcage Walk, London

www.imeche.org.uk/events/bus



Sponsored by:

Department for
Transport

EMP
POWERING THE FUTURE

VDL

www.busandcoach.com
BUS & COACH
Professional

ZYTEK
Zytek Group

Bus 2007

Recent advances in technology, as well as the need for greener and more efficient buses, have created a wealth of opportunities and challenges to those involved in the bus industry. Additionally, the need to expand London's transport infrastructure ahead of the 2012 Olympics has also provided a catalyst to modernise and galvanise the wider bus industry.

IMEchE has organised this one-day conference to be held in London to examine recent developments in the bus industry and analyse future trends in manufacture, safety, technology and low-carbon buses.

With presentations and Roundtable discussions by key bus manufacturers, technology companies and end users, this conference aims to be a comprehensive guide to recent and future developments within the bus industry.

Benefits of Attendance

- Engage in Roundtable discussions with leading manufacturers and regulators
- Meet the companies developing alternative fuels for buses
- Discuss the implications of Whole Vehicle Type Approval and up-coming legislation
- Hear presentations from major manufacturers on subjects from design to emissions
- Gain insight into the future technological development of buses
- Hear the opportunities the Olympics in 2012 have created
- Discuss the development of low-carbon hybrids

Who Should Attend?

- Manufacturers and designers of buses and coaches
- Bus operators and suppliers
- Manufacturers and suppliers of alternative fuel for buses and coaches
- Designers and manufactures of new bus technology
- All bus and coach companies wishing to hear the latest updates on new rules and regulations, such as EU Whole Vehicle Type Approval and low emissions regulations

Exhibition and Sponsorship

Why not take this opportunity to display an exhibition stand, or provide inserts about your company in the delegate packs? For more information contact Jason Williams on 020 7973 1273 or Email j_williams@imeche.org

Co-sponsored by



SAE-UK.org

Supported by



**FUEL CELL
MARKETS**
www.fuelcellmarkets.com



PROGRAMME

Tuesday 18 September

9.00 Registration, tea and coffee

9.25 WELCOMING REMARKS AND OPENING ADDRESS

9.30 TOWARDS 2012: FROM EVOLUTION TO REVOLUTION

- Making advanced vehicles cost-effective
- Delivering practical solutions that benefit all stakeholders in the industry
- Maximising vehicle performance whilst minimising environmental impact

Robin Raimond, UK Sales Director, **Alexander Dennis**

Robin has a lifetime in the industry and started his career within Leyland Truck and Bus, eventually becoming their Chief Engineer of Bus and Coach. When Leyland Bus became part of Volvo, Robin headed their City Bus Design Group. He then set up a Design Consultancy company serving the Passenger Transport sector with clients such as Volvo, Scania, Evobus and Alexanders before moving into the Sales area within Alexander Dennis.

9.50 USING PUBLIC PROCUREMENT TO SECURE TECHNOLOGICAL INNOVATION IN BUSES

- Supply chain management in the automotive industry
- Environmental pressures on operators, authorities and business
- Choosing the right technology path in volume-limited markets
- Public procurement: theory and practice of use in order to reduce manufacturers' risks

Jonathan Murray, Deputy Director, **Low Carbon Vehicle Partnership**

Jonathan is an environmental economist with over twenty years of experience working in the automotive and fuel industries. He was appointed as the Deputy Director of the Low Carbon Vehicle Partnership in September 2005. The Partnership is a stakeholder group representing more than 240 organisations. They work together to accelerate the rate of adoption and development of low-carbon vehicles in the UK.

10.10 THE PROCUREMENT AND OPERATION OF THE OLYMPIC FAMILY FLEET

- The aspirations of the Olympic Committee in demonstrating leading edge sustainability
- Translating this into a viable procurement policy
- The challenges and opportunities for the bus industry in developing emerging technologies

Allan Edmondson, Olympic Family Fleet and Infrastructure Manager, **Olympic Delivery Authority**

Allan has been employed in the bus and coach industry for over 30 years, and can count owning his own coach business as an achievement as well as

being latterly employed by the industry trade association, the CPT as Head of Coaching. He joined the Olympic Delivery Authority in November 2006 with a specific remit to procure and operate a fleet of over 1500 buses and coaches and 3500 cars for the Olympic Games in London 2012.

10.30 EEV/DIESEL: ULTRA LOW EMISSION BUSES

- Meeting EEV values for Natural Gas buses with a diesel bus
- The refinement of engine system filter technology

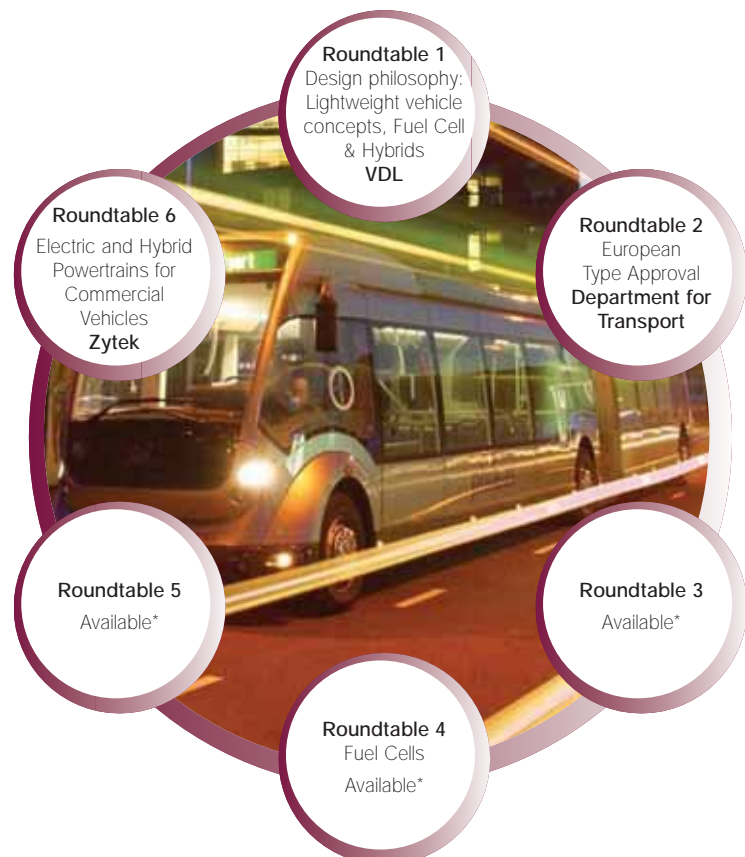
Peter Cremers, Automotive Engineering/Procurement Director, **VDL Bus and Coach**

Peter joined VDL Bus in 1986, and now leads the automotive development and procurement team. VDL Bus & Coach are Europe's largest independent Bus & Coach manufacturer. VDL offers a full range of buses and coaches: single and double-decker touring coaches in various lengths and heights, city buses, articulated buses, high-value public transport systems and chassis modules.

11.00 Tea, coffee and discussion

11.30 ROUNDTABLE DISCUSSION FORUM

This session gives the delegates the opportunity to informally debate the Roundtable topic led by the Roundtable sponsor, who sets the agenda and mediates the discussion. Discussions will take place for a total of 90 minutes, with a bell sounding every 30 minutes inviting delegates to change tables and to join the table of an alternative host/topic. Attendees, therefore, sit in a total of three discussions each.



**Host/sponsor opportunities are available for each table/topic. Please contact Jason Williams on 020 7973 1273, or e-mail j_williams@imeche.org*

13.00 Lunch

14.00 **NEXT GENERATION HYBRID FUEL CELL BUSES**

- Next generation PEM fuel cell systems for city buses with improved efficiency and durability
- Well to wheel energy analyses for city buses
- Comparing greenhouse gas emissions of different drive line options

Erik Middelman, CEO & CTO, **NedStack Fuel Cell Technology BV**

Erik is a board member of Fuel Cell Europe (FCEu) and co-founder of the Dutch Hydrogen and Fuel Cell Association (NWW). NedStack is based in Arnhem, The Netherlands, and is the largest European producer of PEM fuel cells.

14.30 **OPTIMISING THE FUEL CONSUMPTION OF PRESENT GENERATION BUSES AND COACHES**

- Baseline and benchmark testing experience
- Drive line optimisation
- In-service fuel consumption data matching
- Fuel and engine oil consumption management

Graham Russell, Technical Director and Chief Engineer, **First UK Bus**

Graham has over 40 years of experience in the industry, and is now based in Aberdeen with First UK Bus. FirstGroup is the largest bus operator in the UK with 19 operating companies - operating from Aberdeen in the north-east of Scotland to the Devon and Cornwall operation in the south-west of England.

15.00 **DEVELOPING HYBRID BUSES FOR TOMORROW'S CITY CENTRE**

- Understanding operational requirements
- Drive line strategy
- Total vehicle concept
- Robust design

Jonathan Poynton, Hybrid Vehicles Director, **Wright Group**

Jonathan joined Wright Group in 2001, focusing primarily on international contracts. Since October 2005, he has been responsible for Hybrid vehicle development. The Wright Group is the UK's leading supplier of accessible buses for public transportation systems throughout the country. Founded in 1946, and still a family owned and managed company, the Wright Group has pioneered low floor buses in the UK, and has partnerships in North America and continental Europe.

15.30 Tea, coffee and discussion

16.00 **BUS RE-REGULATION: PUTTING PASSENGERS FIRST**

- Effects of bus de-regulation in the Met areas
- Government initiatives in "putting passengers first"
- Buses meeting the business needs of the community

Neil Scales, Chief Executive and Director General, **Merseytravel**

A fellow of the Institution of Mechanical Engineers, Neil has previously worked as an independent Transport & Engineering Consultant for the World Bank, and also for the European Commission on various transportation projects. Merseytravel co-ordinates public transport and acts in partnership with private bus and rail operators to provide public transport in Merseyside.

16.30 **THE IMPACT OF TECHNOLOGY ON THE ENVIRONMENTAL PERFORMANCE OF LONDON'S BUS FLEET**

- Impact of improvements in technology on the environmental performance of London's bus fleet - what's been achieved to date and plans for the future
- London Buses' future plans to reduce Co2 emissions
- Plans for other environmental improvements (eg. Noise)

Mike Weston, Group Operations Director, **TfL**

Mike joined London Transport in 1985, and by 2004 had been promoted to Operations Director. He now manages the delivery of bus operations, safety and the environment for Surface Transport, and is also responsible for managing the business units of Victoria Coach Station, London River Services, Dial-a-Ride and East Thames Buses.

17.00 **EUROPEAN TYPE APPROVAL – HOW IT AFFECTS YOU**

- The presentation will outline the recent agreement of the European Community for new bus and coach approvals in Europe
- The timetable for implementation of approval schemes will be explained
- The new GB regulatory programme will be outlined as will the implications for the COIF scheme.
- The presentation will set out the next steps for manufacturers and purchasers to ensure they meet the new requirements before the implementation deadline

Ian Yarnold, Deputy Head of Transport Technology and Standards Division, **DfT**

Ian leads the UK team negotiating the important ECWVTA directive. He has many years experience in the motor vehicle sector and started his career in the haulage industry. He joined VOSA in the mid eighties and then moved to the central department where he worked on noise, emissions and fuel quality standards. After a spell managing the technology research programme he moved back to developing vehicle safety policy and is now the Division's chief engineer for vehicle safety.

17.30 **CLOSING STATEMENT FOLLOWED BY DRINKS RECEPTION**

The Programme is subject to amendment

Fax completed form back to: +44 (0)20 7222 9881
Post to: Registration S 1274, IMechE, 1 Birdcage Walk, London, SW1H 9JJ, UK
Online booking on: www.imeche.org/events/bus

Please complete in BLOCK CAPITALS

Surname _____ Date of Birth _____
 Title (e.g. Dr / Mr) _____ First Name _____
 Job Title _____
 Organisation / Company _____
 Mailing Address _____

 Postcode _____ Country _____
 Telephone _____ Fax _____
 Email _____

REGISTRATION FEES:

(Includes attendance at the sessions, lunch, refreshments, a copy of the conference volume and the post-conference drinks reception)

	FEE	VAT	TOTAL	PAYABLE
IMechE Member	£210.00	£36.75	£246.75	<input type="text"/>
Member of Co-sponsoring Organisation	£210.00	£36.75	£246.75	<input type="text"/>
Non Member	£250.00	£43.75	£293.75	<input type="text"/>
Student / Retired	£70.00	£12.25	£82.25	<input type="text"/>

EXTRA ITEMS

Invoice Charging (if applicable)	£10.00	£1.75	£11.75	<input type="text"/>
TOTAL				£ <input type="text"/>

PLEASE DO NOT SEND PAYMENT SEPARATELY FROM THIS BOOKING FORM

Special Requirements (including dietary and access):

Membership Status: Are you a:		None of these?
Member of IMechE? Please tick	Member of Co-sponsoring Institution?* Please specify	Please tick <input type="checkbox"/>
Fellow <input type="checkbox"/>	Affiliate <input type="checkbox"/>	
Member <input type="checkbox"/>	Student Affiliate <input type="checkbox"/>	
Associate Member	Other IMechE	
*see General Information - Registration		
IMechE Membership No. (if applicable): _____		

Please indicate method of payment
 Cheque Credit Card Invoice Sterling Draft

Data Protection: The IMechE would like periodically to send you information on events, conferences and publications that you may be interested in. Would you like to receive such information? Yes No

LATE REGISTRATIONS:

After 04 / 09 /2007 please phone 020 7973 1258 to confirm the availability of places and then fax a copy of the registration form to +44 (0)20 7222 9881

PAYMENT DETAILS:

By Cheque:

Cheques should be in Sterling and made payable to 'Institution of Mechanical Engineers'

By Credit Card:

Please charge my Eurocard/ Mastercard/ Visa * card (* delete as appropriate)
 NB Diners Club, American Express and Maestro Cards are NOT accepted

Total amount £

Card no: _____

Valid from date Expiry date Signature

Address at which the card is registered (if different from overleaf)

Authorisation code (office use only) Obtained by:

A VAT receipt will be issued upon card's authorisation

INVOICE DETAILS (UK DELEGATES ONLY):

Delegates wishing to be invoiced must provide an order number or the registration cannot be processed and will be returned. If your company does not use order numbers please enclose a formal request for invoicing on your company's letterhead.

A charge of £10 + VAT will be made for each invoice to cover additional administration costs

Order Number

Contact Name

Name and Address for invoicing

Post Code

Tel: Fax:

Invoices are payable on receipt and no alterations to these terms will be accepted.

PAYMENT BY OVERSEAS DELEGATES:

Overseas delegates may pay by credit card (see above) or by sterling draft drawn on a UK bank. NB The draft MUST accompany this form and it is the delegate's responsibility to pay bank charges. Please note our bank details:

IMechE Current Account, Natwest Charing Cross Branch
 Sort Code 60-40-05, Acc No 00817767.

We regret that we are unable to invoice overseas delegates.

VAT REG. NO. GB 299 9304 93

The Institution of Mechanical Engineers is a registered charity, number 206882

Please photocopy the reverse side if you wish to retain the full programme.
 Alternatively the programme is available to view on the IMechE website at www.imeche.org/events/bus

A
B
C
D
E

GENERAL INFORMATION

REGISTRATION

To register please return the completed registration form with the appropriate remittance. The reduced IMechE member rate is also available to members of the SMMT and SAE-UK.

CANCELLATIONS

For a refund of fees (less £40 + VAT admin charge), cancellations must be made at least four (Conference) weeks prior to the event. Replacement delegates are welcome at any time.

VENUE

The conference will be held at Institution of Mechanical Engineers, 1 Birdcage Walk, London, SW1H 9JJ. Full details of how to reach the venue will be issued to delegates prior to the event.

ACCOMMODATION

The Corporate Team in association with the IMechE has arranged special discounted rates at local hotels for delegates. A list of hotels will be forwarded to delegates upon receipt of their registration and payment. Alternatively please contact the Corporate Team directly and quote ID number 8488.

Tel: 0845 6044060

Fax: 020 7828 6439

Email: events@corporateteam.com

Website: <http://www.corporateteam.com/events/8488ME>

INSURANCE

The organisers do not accept liability for any injuries or losses of any nature incurred by delegates and/or accompanying persons, nor the loss or damage to their luggage and/or personal belongings.

ENQUIRIES

Please address enquiries to the relevant department:

Event enquiries:

Jason Williams Tel: 020 7973 1273

Fax 020 7222 9881

Email: j_williams@imeche.org

Registration enquiries:

Tina Churcher Tel: 020 7973 1258

Fax 020 7222 9881

Email: t_churcher@imeche.org

Membership of IMechE

Substantial discounts on attending events are available to IMechE Members. For full details of becoming a member of IMechE please contact the Membership Department on 0845 226 9191 Fax: 020 7090 1001

Membership Department
Institution of Mechanical Engineers
1 Birdcage Walk
London SW1H 9JJ

The Institution of Mechanical Engineers is a registered charity, number 206882