

NEXUS

COLLABORATION REPORTER®



Video Analytics and Performance Management Tool

NEXUS

collaboration reporter

is the enterprise-class video conferencing and collaboration performance management solution for IT professionals worldwide

NEXUS Collaboration Reporter compiles raw data from all conferencing resources to optimize business and operational objectives:

Migrating from IP?

NEXUS Collaboration Reporter gives you real-time trends as you move from ISDN MCU to IP

Worried about exceeding IP ports?

NEXUS Collaboration Reporter analyzes capacity data every five minutes

Launching adoption campaigns?

NEXUS Collaboration Reporter measures the impact of your adoption campaigns on usage



321.638.2007

www.appliedglobal.com

Every conferencing tool has built-in software reporting capability.

NEXUS

COLLABORATION REPORTER®

pulls that raw data into a manageable and easy to read form so you can solve business concerns.

NEXUS collaboration reporter Modules:

NEXUS for FATHOM®

Automated trouble-ticketing for managed endpoints, tracking of Desktop Video usage and more

NEXUS for VIDEO PRESENTER®

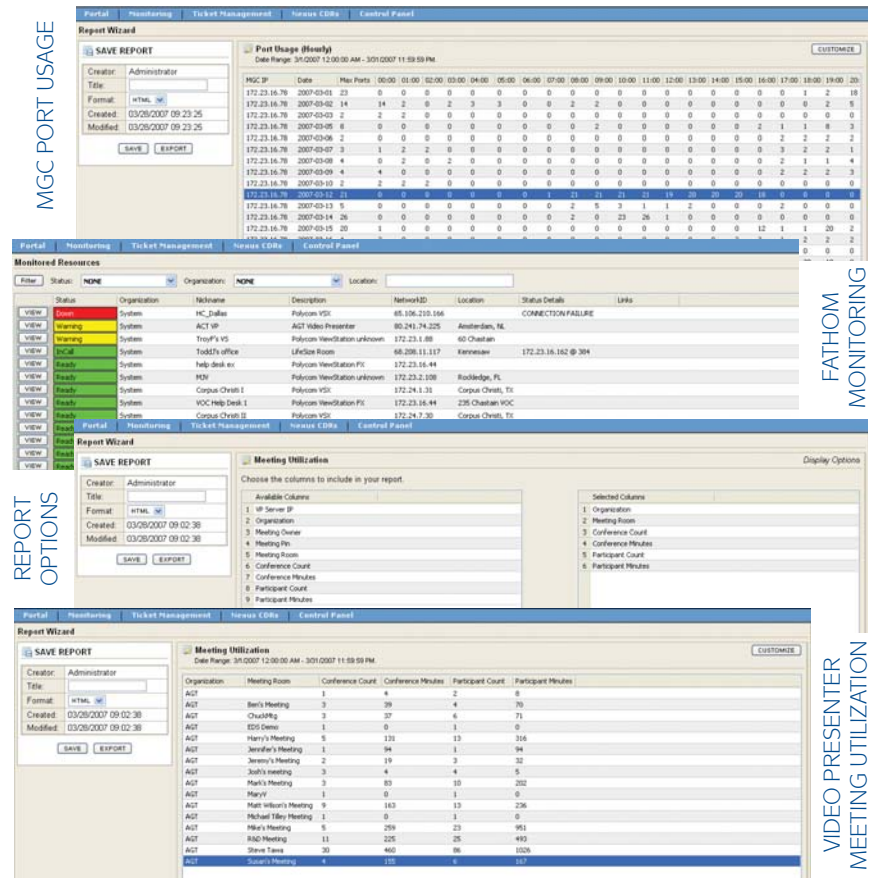
Goes beyond standard MCU reporting with emphasis on monitoring on demand capacity and trends

NEXUS in Polycom MGC

monitors capacity, usage trends, call failure rates and more (see chart, below)

Make NEXUS Collaboration Reporter the center of your hosted or managed video collaboration service. It makes video networks “future proof” with new modules added as needed.

Prove and improve video performance across your entire organization



NEXUS enhances standard Polycom reports for better service management

MGC

Stores up to 500 conferences at a time. Once this threshold is met, any new conferences will begin to overwrite the old ones.

Reporting essentially doesn't exist for CDRs. An exported CDR simply lists the conference events in chronological order and includes too much technical data. Users manually have to match up participant start and end events within each conference CDR file to determine utilization.

Determining the needed capacity is difficult. The Resource Report shows only current port activity, so there is no way to identify resource usage trends unless actively monitoring.

Conference data resides separately on each individual MGC. There is no aggregate view of the CDR data across multiple MGCs. Users must manually connect to each one to gather and process the data.

NEXUS

Nexus will continue to store conference (CDR) data up to the hard disk capacity. This CDR data can be exported out of Nexus for additional space.

Generating reports is quick and easy in Nexus. Users choose from several report templates and can then customize every aspect of the report to fit their needs. The flexibility exists to summarize data for utilization or drill down to see every participant connection. You can even choose to save your customized report for future use.

Nexus will provide resource or port usage for you. Access this data in the same, quick and easy way as the other reports. Utilize the port usage chart to help identify the need for additional capacity.

Nexus will consolidate CDRs from multiple MGCs automatically. Customize report templates to show results for a particular MGC or across all.