



Enhancer

Enhance your pictures in one step!



AKVIS Enhancer

AKVIS Enhancer is a tool for revealing details on a picture. **Enhancer** allows detecting details from underexposed, overexposed and mid tone areas of a photo without manipulating exposure.

The tool is useful in the cases when a photo lacks details. For example, when a picture has been taken with the background overexposed and consequently the foreground is hardly discernible, which is especially annoying when you take a picture of a person. If the background of a picture represents an undistinguished spot and you wonder what was the scenery like. If a photo lacks dramatic effect due to vagueness of the scene.

If you try to reveal details in highlighted or overshadowed areas using exposure correction (for example, Levels) you run the risk of spoiling the parts of the image that you want to leave unchanged.

The idea behind **Enhancer** is entirely different. **AKVIS Enhancer** brings out details by intensifying color transition. It means that **Enhancer** strengthens the difference between adjacent pixels having different color gradations and therefore allows revealing not only details in the shadow but even details in the overexposed and mid tone areas.

Earlier it was possible (and such programs exist) to achieve the same result by manipulating with 2-4 shots of the same scene. **AKVIS Enhancer** does it all out of one shot thanks to the advanced algorithm of photo correction.



Installation under Windows

Minimal system requirements:

- Pentium II;
- Operating system: Windows 2000, Windows XP, Windows NT;
- 256 Mb RAM;
- 15 Mb of free space on the hard disk
- an installed image editing software.

Attention! You must have administrator rights to install the program on your computer.

To install the program you should follow the instruction:

- Start the setup file **akvis-enhancer-setup.exe**.
- Select your language and press the button **Next** to launch the installation process (fig. 1).
- To continue the installation process you have to read the License Agreement. Activate the check box "Yes, I agree with all the terms of this license agreement", and press **Next** (fig. 2).

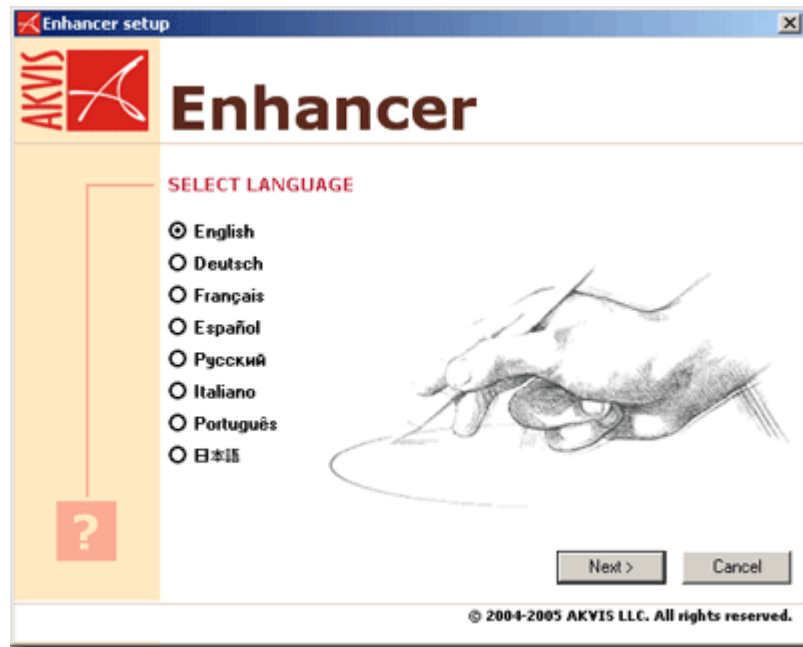


Fig. 1.

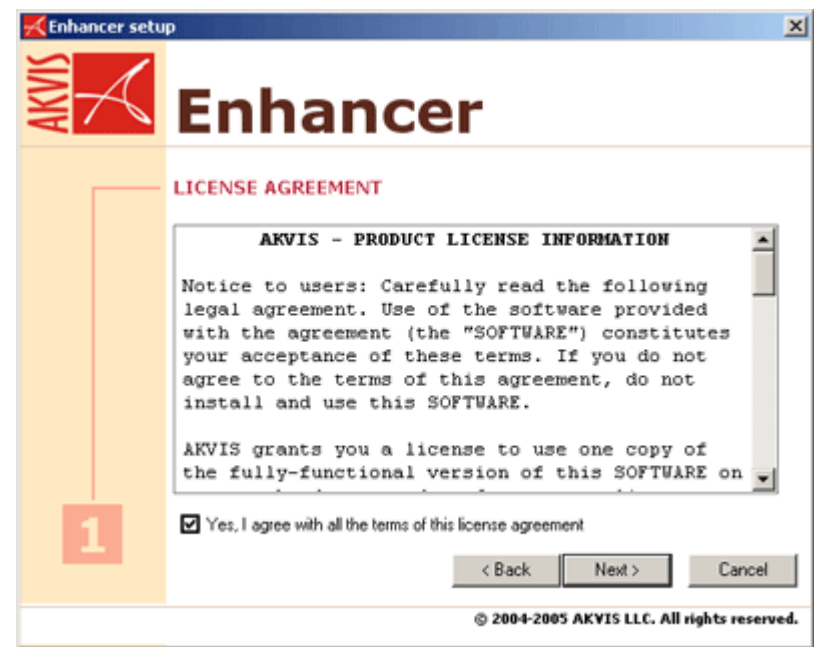


Fig. 2.

- Select your photo editor(s) from the list and press **Next** (fig. 3). If there is no your photo editor in the list, activate the check box **Other Graphics Software**, press the button Browse and choose the Plug-Ins folder of your photo editor. For example, C:\Program Files\Corel\PhotoPaint\Plugins.
- Choose a folder in the Main menu where you want the program to create shortcuts, and press **Next** (fig. 4).

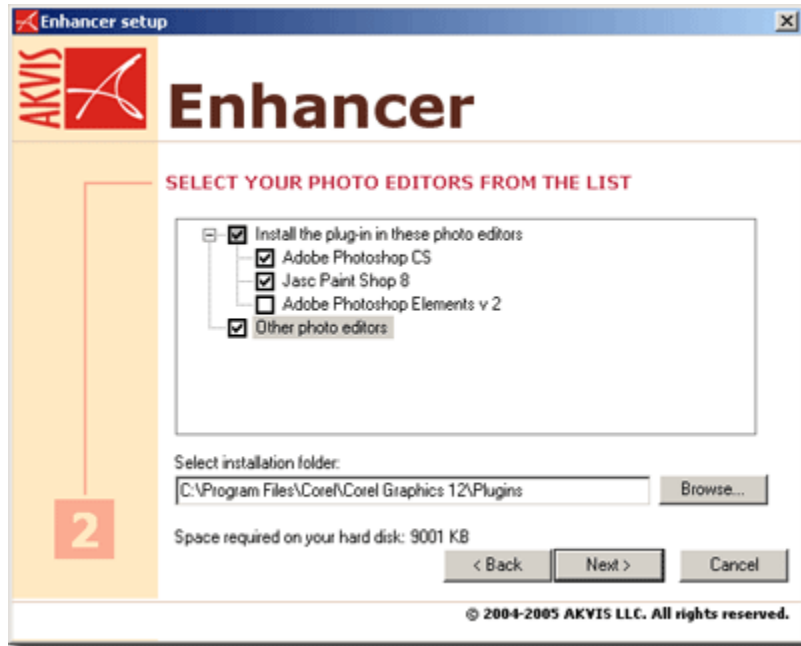


Fig. 3.

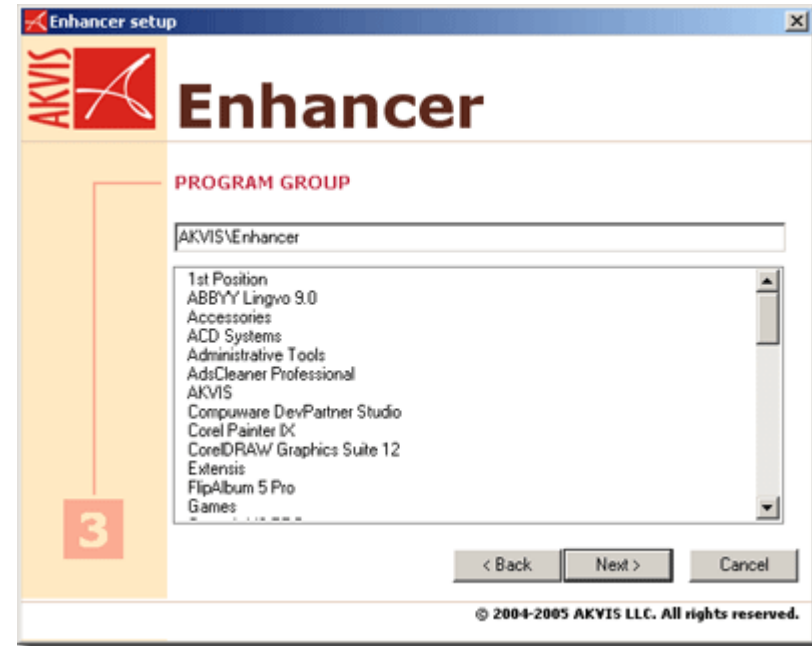


Fig. 4.

- The installation is in progress (fig. 5).
- The installation is completed. You can subscribe to the AKVIS Newsletter. Click the check box and enter your e-mail address (fig. 6).
- Press **Finish** to exit Setup.

After **AKVIS Enhancer** installation, you will see a new tab in the Filters (Effects) menu of your photo editor: **AKVIS – Enhancer**.

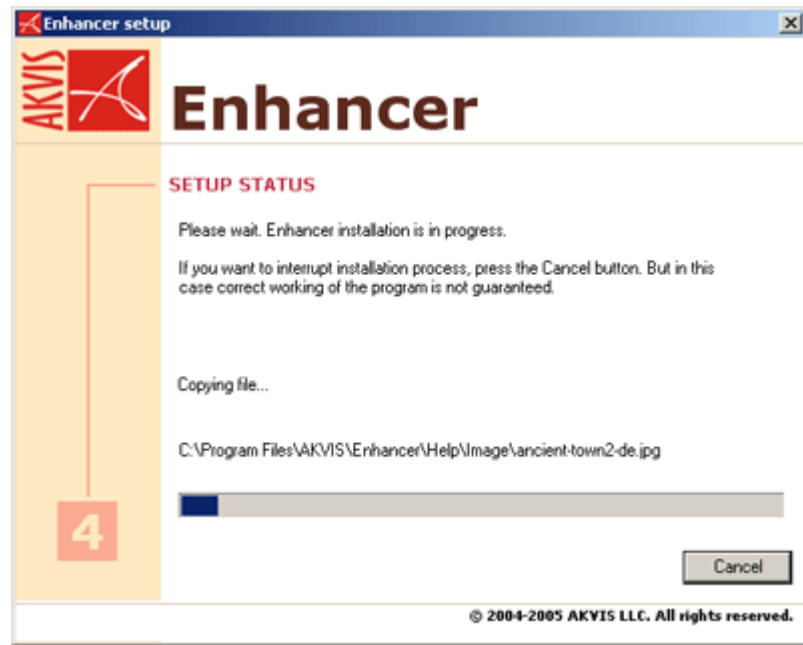


Fig. 5.

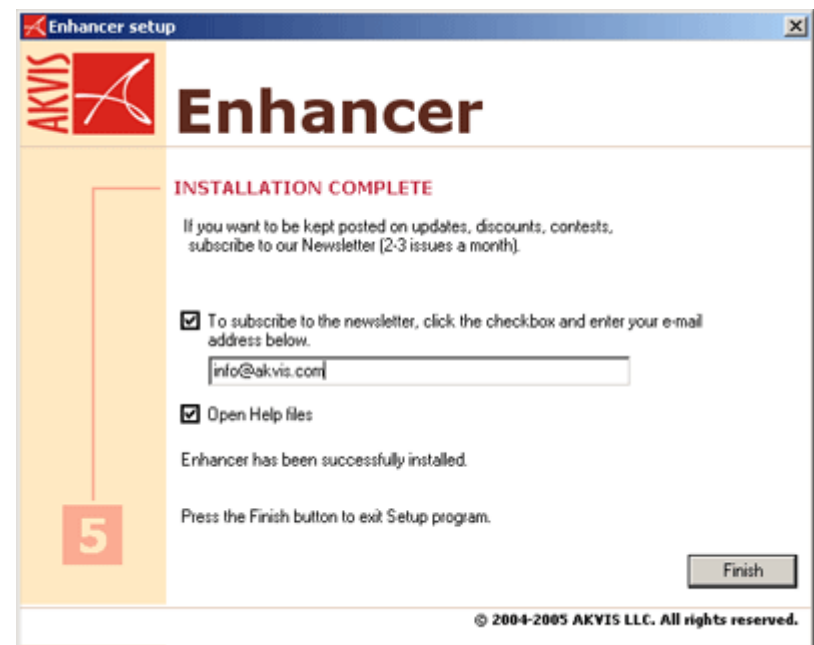


Fig. 6.

Installation under Macintosh

Minimal system requirements:

- Mac OS X 10.3.9, PowerPC G3;
- 256 Mb RAM;
- 15 Mb of free space on the hard disk;
- installed image editing software.

Attention! You must have administrator rights to install the program on your computer.

To install the program you should follow the instruction:

- Open the virtual disk **akvis-enhancer-setup.dmg**. You will see a dialog box with the **License Agreement** (fig. 1).
- Read the License Agreement and press **Agree**, if you agree with the conditions.
- Then a window with the **AKVIS Enhancer** folder will open. Drag the folder into the Plugins folder of your photo editor (fig. 2).

After installation of **AKVIS Enhancer**, you will see a new tab in the Filters (Effects) menu of your photo editor: **AKVIS → Enhancer**.

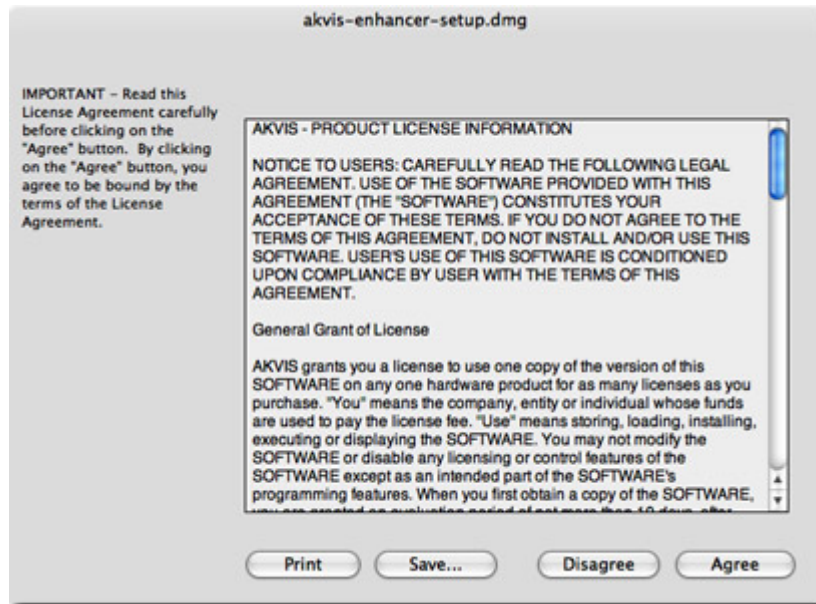


Fig. 1.

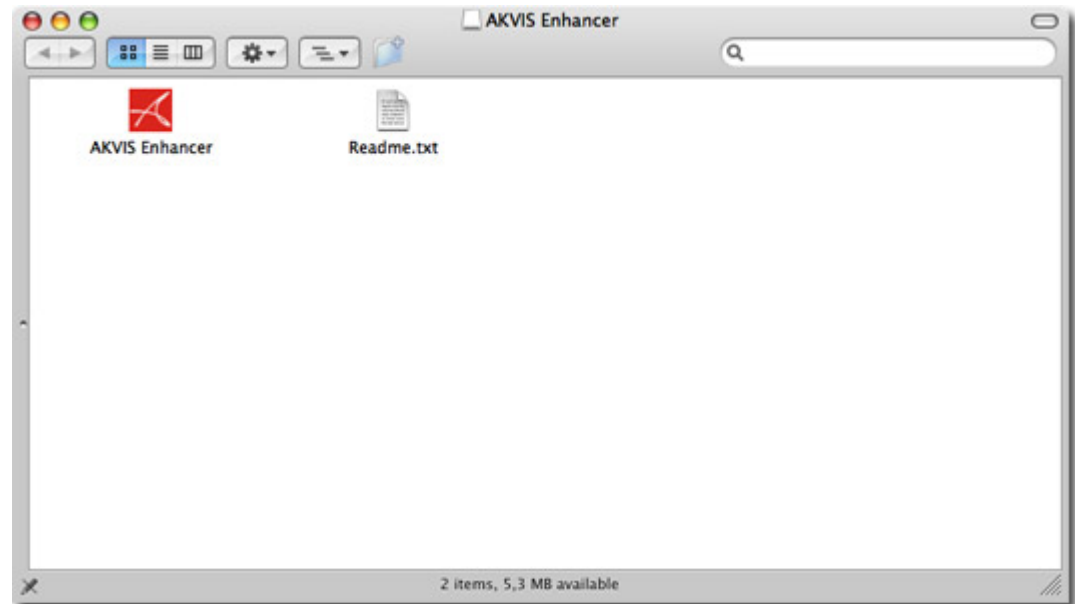



Fig. 2.

Program registration

You can buy a license for **AKVIS Enhancer** at the official web-site **www.AKVIS.com**. To buy a license you should fill in the form on the product buy-page and order the software using a secure payment system. We offer a number of payment options (credit card, bank transfer, etc).

When the form is filled in and the payment is made, the serial number will be sent to you within minutes. Having received the serial number you can proceed to the program registration. Follow the instructions:

1. Open the window **About the program** of **AKVIS Enhancer** (fig. 1). This window appears when you launch **AKVIS Enhancer** or when you press the button  in the window of this program. Besides, **Adobe Photoshop** allows calling the **About the program** window right from its menu **Help - About Plug-In - Enhancer (Photoshop - About Plug-In - Enhancer** in Macintosh).
2. Press **Register/Buy** in the window **About the program** to start the process of activation.
3. Enter your name and your serial number (fig. 2).
4. Choose a method of activation – either through direct connection or by mail – and press **Register**. We recommend activating the program through direct connection, as it is the easiest way. At this stage of activation your computer must be connected to Internet.
5. The registration is completed (fig. 3).

In case you have chosen activation by mail, you should put the file **Enhancer.lic** (that you will receive enclosed in the e-mail) into the folder **Program Files\AKVIS\Enhancer** in Windows, or in your **Home Directory** in Macintosh).

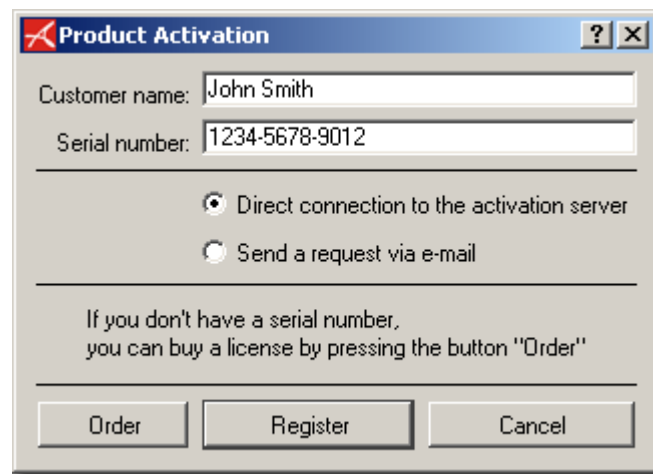


Fig. 2.



Fig. 1.



Fig. 3.

Working area

To call **AKVIS Enhancer** plugin you should select it from the list of effects. For this purpose use the command Filter - AKVIS - Enhancer in **Adobe Photoshop**; the menu item Effects - Plugins- AKVIS - Enhancer if you work with **Jasc Paint Shop Pro**; or Effects - AKVIS - Enhancer if you use **Corel PHOTO-PAINT**.

Picture 1 shows the interface of **AKVIS Enhancer** under Windows, picture 2 shows the interface of **AKVIS Enhancer** under Macintosh.

Most part of the **AKVIS Enhancer** plug-in's window is taken by the **Image window** with two tabs **Before** and **After**. The original image is shown in the **Before** tab, the **After** tab shows the processed photo. You can switch between the tabs using the **Tab** key. To compare the original and the resulting images, you can just left-click on the image in the **After** tab.

In the right part of the window you can see the Toolbar with buttons and options.

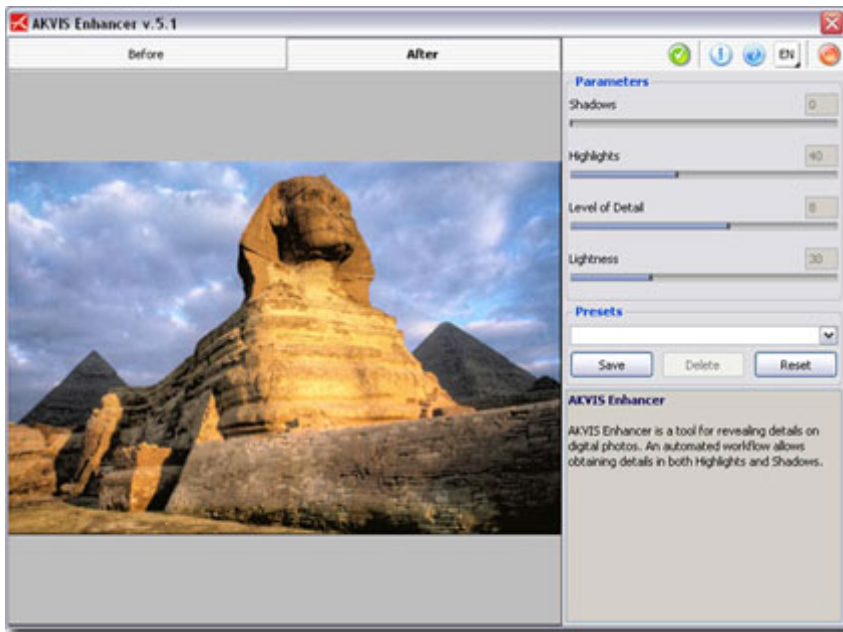


Fig. 1.

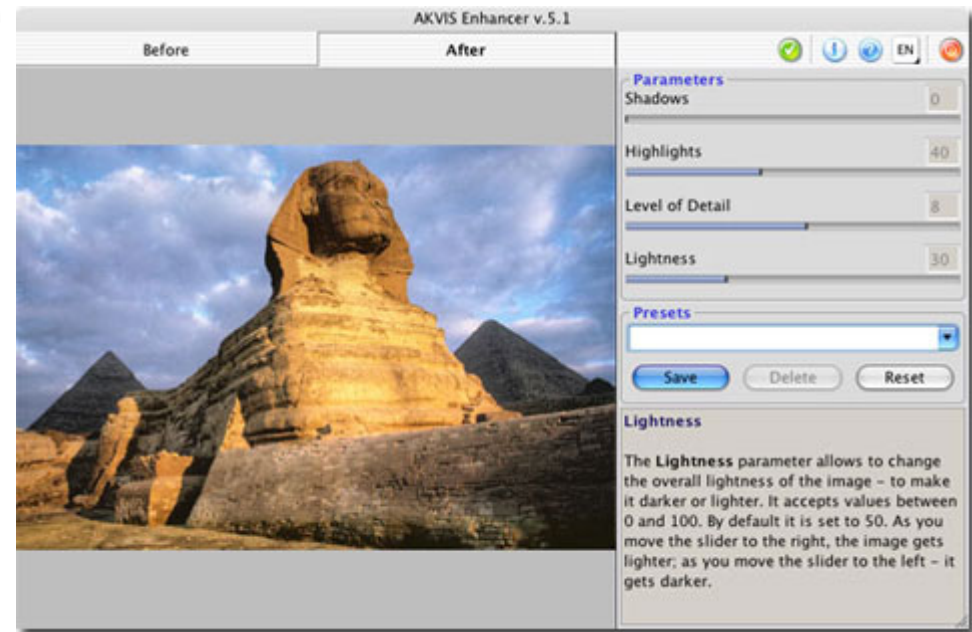



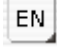
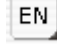



Fig. 2.

In the upper part of the Toolbar you can see the following buttons:

- The button  applies the result to the image and closes the **AKVIS Enhancer** window.
- The button  calls information about the program.
- The button  calls the help files of the program.
- The button  allows selecting the language of the program's interface. To switch to another language, you should left-click the button  and select the required language from the fall-out menu.
- The button  allows closing the program window without applying the result of image editing.

There are four sliders that influence the outcome: **Shadows**, **Highlights**, **Level of Detail** and **Lightness**.

The **Shadows** parameter allows details to be revealed in the underexposed parts of the image. The values vary between 0 and 100. As the parameter value increases, the dark parts of the image get lighter and the level of detail in these parts increases. But it does not cause loss of details in the light areas.

The **Highlights** parameter allows details to be revealed in the light areas of the image. The values vary between 0 and 100. When you move the slider to the right, the parameter value increases, the light parts of the image get darker and the level of detail in these parts increases. If you set a high value for this parameter it can cause loss of middle tones on some images that result in the loss of their volume.

The **Level of Detail** parameter defines the amount of details detected. It accepts values between 0 and 15 with the default value of 5. The higher the parameter value, the sharper the color transition and the more detail is visible. On underexposed images the high value of this parameter may cause noise.

The **Lightness** parameter allows changing the overall lightness of the image - to make it darker or lighter. It accepts values between 0 and 100. By default it is set to 50. As you move the slider to the right, the image gets lighter; as you move the slider to the left - it gets darker.

In the **Presets** field you can save favourite settings as a preset to use them in the future. When you launch the plugin, it uses the settings of the last used preset.

In the **Hint** group you can see the description of **AKVIS Enhancer** or the description of the parameter that has been last changed.

How it works

Follow the steps below to increase the level of detail on a picture using **AKVIS Enhancer**:

1. Open the image in a photo editor (fig. 1).
2. Call **AKVIS Enhancer** plugin. To this effect select the command Filter - AKVIS - Enhancer in **Adobe Photoshop**; the menu item Effects - Plugins- AKVIS - Enhancer if you work with **Jasc Paint Shop Pro**; or Effects - AKVIS - Enhancer if you use **Corel PHOTO-PAINT**.
3. You will see **AKVIS Enhancer** window, as showed on picture 2. Wait a bit as the program processes the original photo at default parameter values. It can be the settings of the **AKVIS Default** preset or the settings saved by the user as a preset.

The processed image is shown in the **After** tab. You can switch between the tabs using the **Tab** key. To compare the original and the resulting images, you can just left-click on the image in the **After** tab.



Fig. 1.

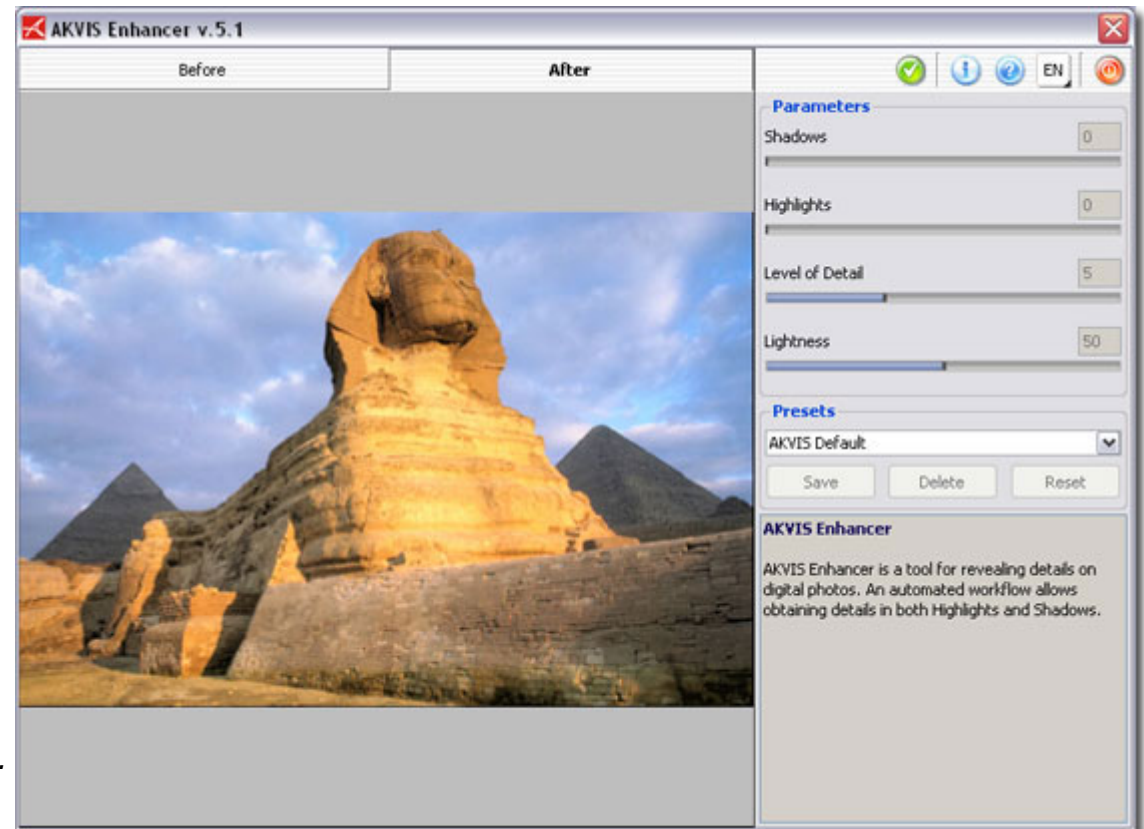


Fig. 2.

4. Adjust the values for **Shadows**, **Highlights**, **Level of Detail** and **Lightness** (fig. 3).

The **Shadows** parameter allows details to be revealed in the underexposed parts of the image. The values vary between 0 and 100. As the parameter value increases, the dark parts of the image get lighter and the level of detail in these parts increases. But it does not cause loss of details in the light areas.

The **Highlights** parameter allows details to be revealed in the light areas of the image. The values vary between 0 and 100. When you move the slider to the right, the parameter value increases, the light parts of the image get darker and the level of detail in these parts increases. If you set a high value for this parameter it can cause loss of middle tones on some images that result in the loss of their volume.

The **Level of Detail** parameter defines the amount of details detected. It accepts values between 0 and 15 with the default value of 5. The higher the parameter value, the sharper the color transition and the more detail is visible. On underexposed images the high value of this parameter may cause noise.

The **Lightness** parameter allows changing the overall lightness of the image - to make it darker or lighter. It accepts values between 0 and 100. By default it is set to 50. As you move the slider to the right, the image gets lighter; as you move the slider to the left - it gets darker.

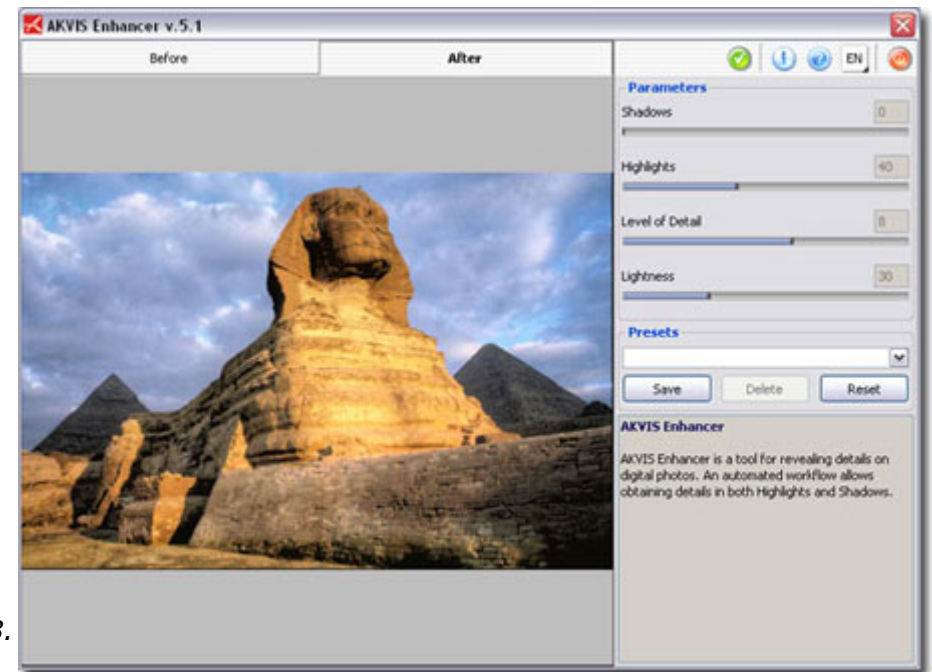




Fig. 3.

5. It is possible to save the settings you like as a preset and use them in the future. To save a preset, enter a name for the preset into the **Presets** field and press the button **Save**. Now, as you start the program, it will use the settings of this preset. If you change the values of the parameters, you can always come back to the default settings of the preset by pressing the button **Reset**.

To delete a preset, select it from the list and press **Delete**.

To process an image with the settings of a certain preset, you should select it from the fall-out menu and wait a bit.

6. When you are through with the image editing, press the button  to apply the result or the button  to close the program without applying the result.



In the street

When you take a photo in the street where the lighting is poor, you can notice that the subject of the shoot turns out to be dark and hardly visible. You can reveal details in the shadows using **AKVIS Enhancer**.


1. Open the image (fig. 1) in your photo editor.
2. Call AKVIS Enhancer plugin. To this effect select the command Filter - AKVIS - Enhancer in **Adobe Photoshop**; the menu item Effects - Plugins- AKVIS - Enhancer if you work with **Jasc Paint Shop Pro**; or Effects - AKVIS - Enhancer if you use **Corel PHOTO-PAINT**. You will see **AKVIS Enhancer** window (fig. 2) with the photo processed at default parameter values.
3. Taking into account that the photo is underexposed, we need to reveal more details in the dark areas. We increase the value of the parameter **Shadows** to 100.
4. Let's increase the overall lightness of the photo by moving the slider **Lightness** to the right to 70.
5. Press the button  in the Toolbar to apply the result of the photo correction and close the plugin window (fig. 3).



Fig. 1.

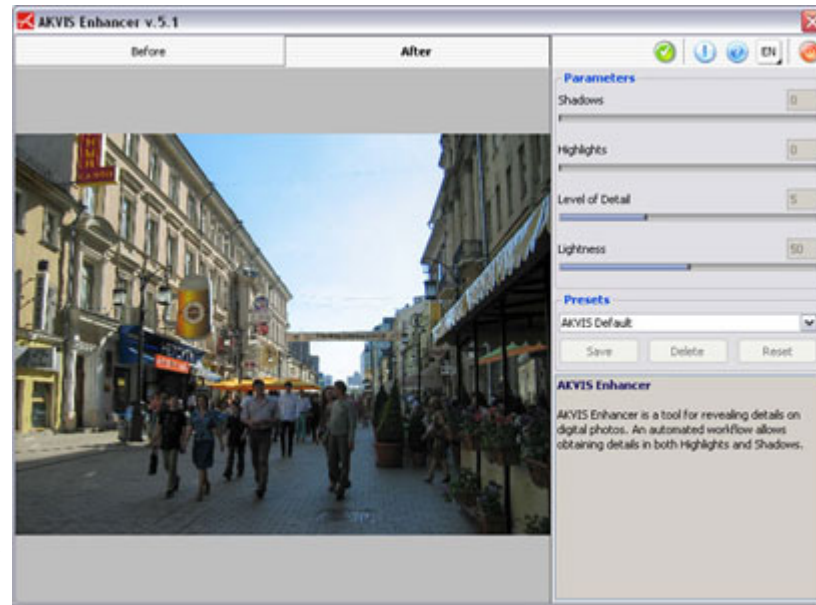


Fig. 2.



Fig. 3.

See the lorry in detail

1. Open the image in your photo editor (fig. 1).
2. Call **AKVIS Enhancer** plugin. To this effect select the command Filter - AKVIS - Enhancer in **Adobe Photoshop**; the menu item Effects - Plugins- AKVIS - Enhancer if you work with **Jasc Paint Shop Pro**; or Effects - AKVIS - Enhancer if you use **Corel PHOTO-PAINT**.

You will see **AKVIS Enhancer** window with the photo processed at default parameter values.


3. Increase the value of the parameter **Level of Detail** to 8.
4. To reveal more details in the light areas of the picture (white clouds, the ground) we increase the value of the parameter **Highlights** to 70.
5. Decrease the value of the parameter **Lightness** (fig. 2).
6. Press the button  in the Toolbar to apply the result of the photo correction and close the plugin window (fig. 3).



Fig. 1.



Fig. 2.



Fig. 3.

A child in the garden

When shooting on a sunny day with wrong exposure settings or if the flash fails, you can notice sharp shadows on the face. The photo below has been taken with a side lighting, that's why the face is in shadows.


1. Open the image (fig. 1) in your photo editor.
2. Call **AKVIS Enhancer** plugin. To this effect select the command Filter - AKVIS - Enhancer in **Adobe Photoshop**; the menu item Effects - Plugins- AKVIS - Enhancer if you work with **Jasc Paint Shop Pro**; or Effects - AKVIS - Enhancer if you use **Corel PHOTO-PAINT**. You will see **AKVIS Enhancer** window (fig. 2) with the photo processed at default parameter values.
3. Our task is to reveal the child's face which is cast in shadows due to unevenness of exposure. Therefore we will increase the values of the parameters **Shadows** to 80 and **Lightness** to 100.
4. Press the button  in the Toolbar to apply the result of the photo correction and close the plugin window (fig. 3).



Fig. 1.




Fig. 2.



Fig. 3.

Dark picture of a church

1. Open the image in your photo editor (fig. 1). The subject of the photo is the church. However, as the church is rather far from the photographer and he applied the automatic settings of the camera, the picture is dark, the church is hardly visible and the trees look like one obscure spot.
2. Call **AKVIS Enhancer** plugin. To this effect select the command Filter - AKVIS - Enhancer in **Adobe Photoshop**; the menu item Effects - Plugins- AKVIS - Enhancer if you work with **Jasc Paint Shop Pro**; or Effects - AKVIS - Enhancer if you use **Corel PHOTO-PAINT**.
You will see **AKVIS Enhancer** window with the photo processed at default parameter values.
3. We move the slider **Shadows** to the far right to reveal details in the shadows.
4. Let's increase the lightness of the photo, approx. on 10 units, for us not to lose details in the light sky (fig. 2).
5. Press the button  in the Toolbar to apply the result of the photo correction and close the plugin window (fig. 3).

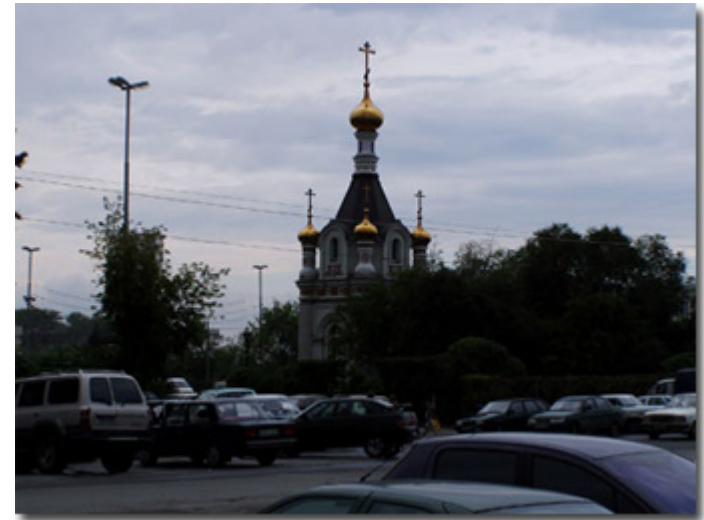


Fig. 1.

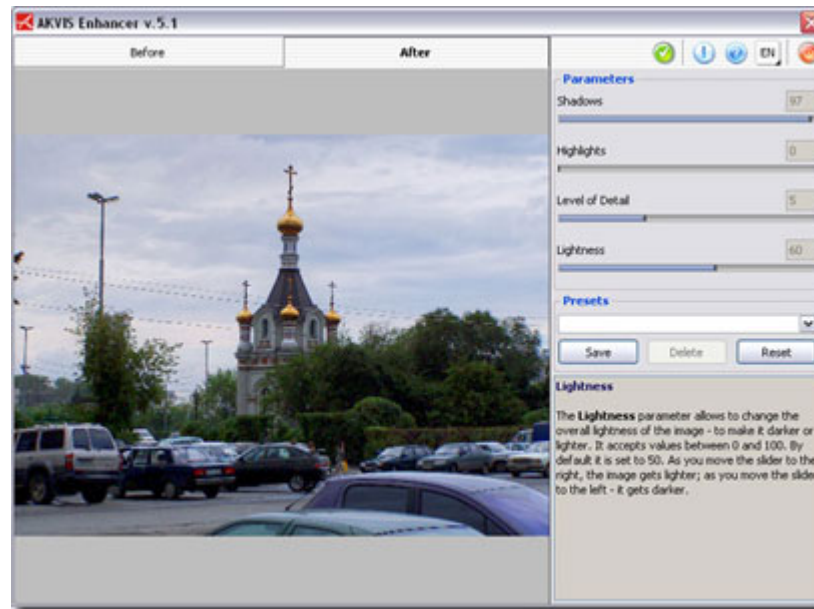


Fig. 2.

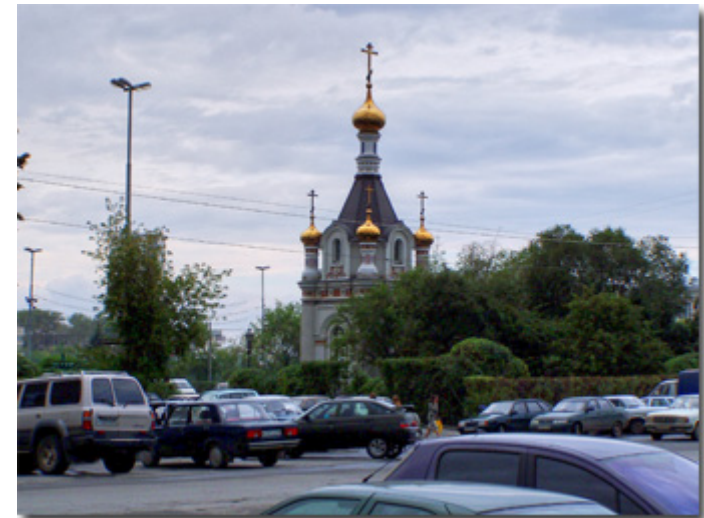


Fig. 3.

An ancient town

When you visit new places, you take a lot of pictures to show them to your friends and to keep in your memory the wonderful sights you visited. However, your digital camera may fail to render them accurately. You can apply **AKVIS Enhancer** to obtain a better result. Follow the instruction:


1. Open the photo of an ancient town in your photo editor (fig. 1).
2. Call **AKVIS Enhancer** plugin. To this effect select the command Filter - AKVIS - Enhancer in **Adobe Photoshop**; the menu item Effects - Plugins- AKVIS - Enhancer if you work with **Jasc Paint Shop Pro**; or Effects - AKVIS - Enhancer if you use **Corel PHOTO-PAINT**.
3. In this case it will suffice to increase the value of the parameter **Shadows** to 95 to reveal details in the dark areas (fig. 2).
4. Press the button  in the Toolbar to apply the result of the photo correction and close the plugin window (fig. 3).



Fig. 1.

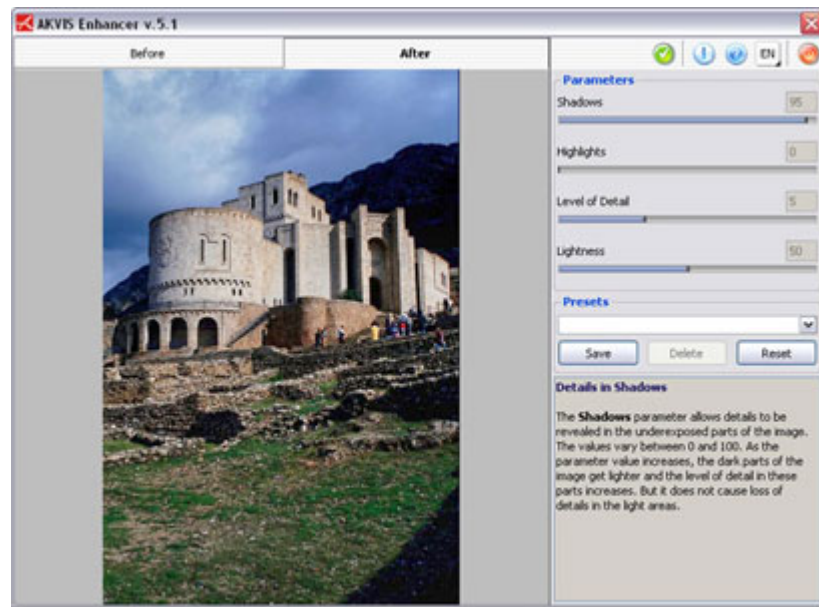


Fig. 2.



Fig. 3.

Deer

When shooting an object or a landscape at a distance, you may notice that the picture has a kind of a haze. You can improve such photos using **AKVIS Enhancer**. It will improve the level of detail, the image contrast and sharpness.


1. Open the image in your photo editor (fig. 1).
2. Call **AKVIS Enhancer** plug-in. In **Adobe Photoshop** select the command Filter - AKVIS - Enhancer, in **Jasc Paint Shop Pro** - call the command Effects - Plugins - AKVIS - Enhancer; in **Corel PHOTO-PAINT** - use the command Effects - AKVIS - Enhancer.
3. We increase the values in both **Shadows** and **Highlights**. It will help us to reveal details simultaneously in dark and in light areas (fig. 2).
4. Press the button  in the Toolbar to apply the result of the photo correction and close the plugin window. As a result the photo has become sharper and more contrasting (fig. 3).



Fig. 1.

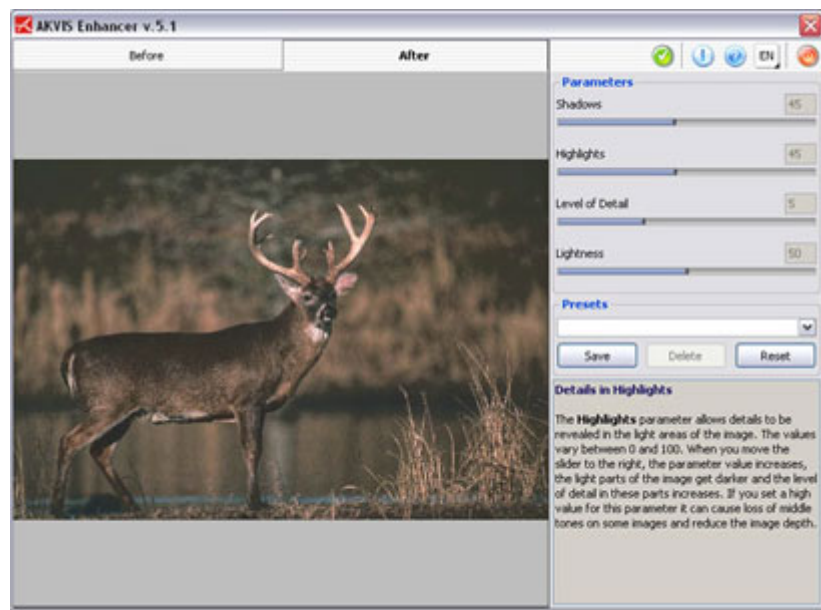


Fig. 2.



Fig. 3.