



## PureKleen Parts Washers

An innovative high quality, cGMP Parts Washer, developed for use in the pharmaceutical, biotech, healthcare and medical fields.



### Introduction

The parts washer, using an innovative spray technique, offers the perfect clean employing high impact accurate spray targeting. They incorporate existing and new technologies to provide an environmentally friendly, low water and energy usage washing facility for parts washing.

### Typical Applications

Change parts, tooling, drums, containers, hoses, tubes, containers and other equipment used in R&D and Production facilities.



### Development

The Purekleen Washers have been developed using our 45 years of experience in the field and are an exciting new concept that bridges the gap between small benchtop units and our large full height washers. With new uses emerging constantly, we offer customised trolleys and loading mechanisms to wash the most complex equipment

### Range Details

The range includes three sizes of washers, with cleaning chamber dimensions starting from 750 x 750 x 1000mm up to 1250 x 1250 x 1000mm, are crevice free, with an air tight inflatable door seal beneficial for high containment requirements. Available in single door or double door pass through designs and built from 316L stainless steel to cGMP, ASME BPE and GAMP standards, they can be freestanding or integrated into your facility, located in your wash area or clean rooms.

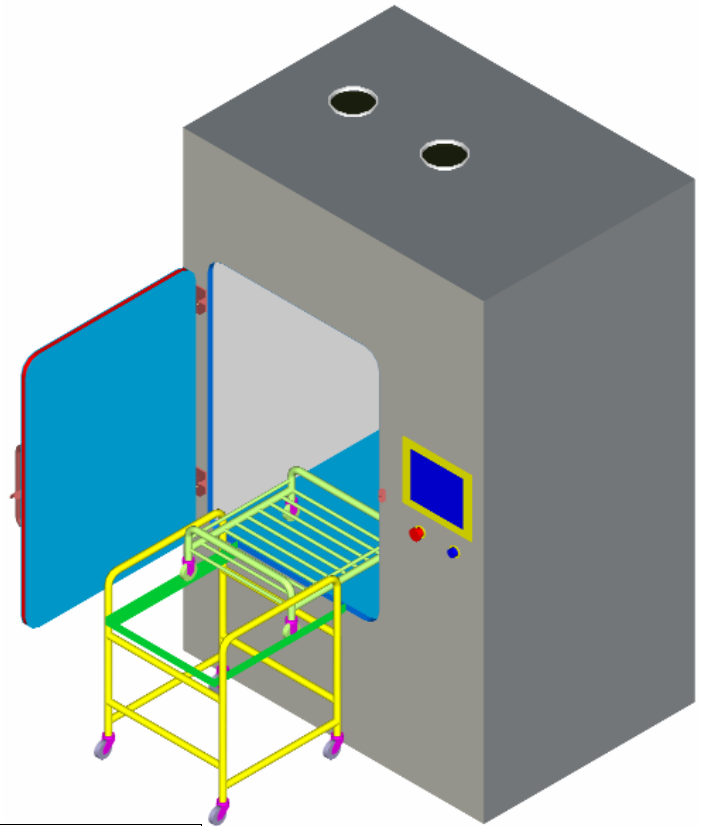
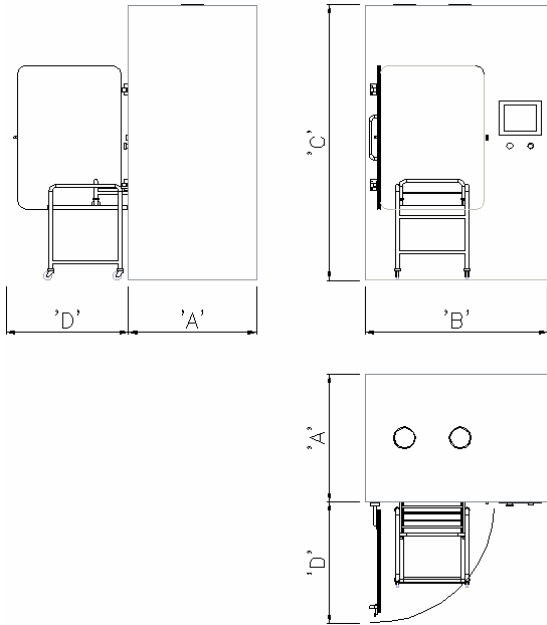
### Loading

Designed for simple use, the parts are loaded onto mobile trolleys with detachable trays for sliding directly into the washer, allowing rack loading to be carried out at the component disassembly point.



## PureKleen Parts Washers

### Dimensions



3D View

### PureKleen Models

Model	Chamber Dimensions			Overall Dimensions			
	width mm	height mm	depth mm	A mm	B mm	C mm	D mm
PureKleen 750	750	750	1,000	1,100	1,450	1,950	750
PureKleen 1000	1,000	1,000	1,000	1,100	1,700	1,950	1,000
PureKleen 1250	1,250	1,250	1,000	1,100	1,950	1,950	1,200

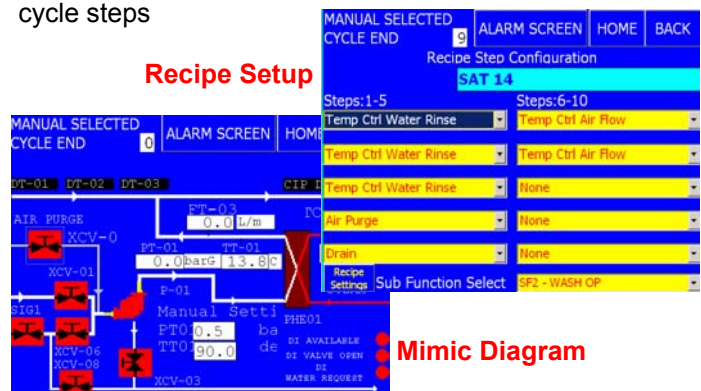
### Standard Rinses

- Hot Water Rinse (with or without detergent)
- Cold Water Rinse (with or without detergent)
- Purified Water Rinse
- Air Purge
- Drain
- Hot Air Dry
- Air Cool

### Control System

The Washers intuitive operator interface is a full colour touch panel which has 10 levels of password protection, includes 2 pre-configured cycles and up to 30 user configurable washing cycles. Complete with self-diagnostic features, the operator interface allows configuration of the cycle steps

### Recipe Setup



Mimic Diagram

### Validation

Offering traceability and a full validation trail, the washers are provided with customised documentation including Quality Plan, P&ID, GA, datasheets, FDS, HDS, SDS, FAT, SAT, IQ/OQ Protocols.

### Standards

Fully hygienic, built from 316L stainless steel and manufactured to current Biopharma standards.