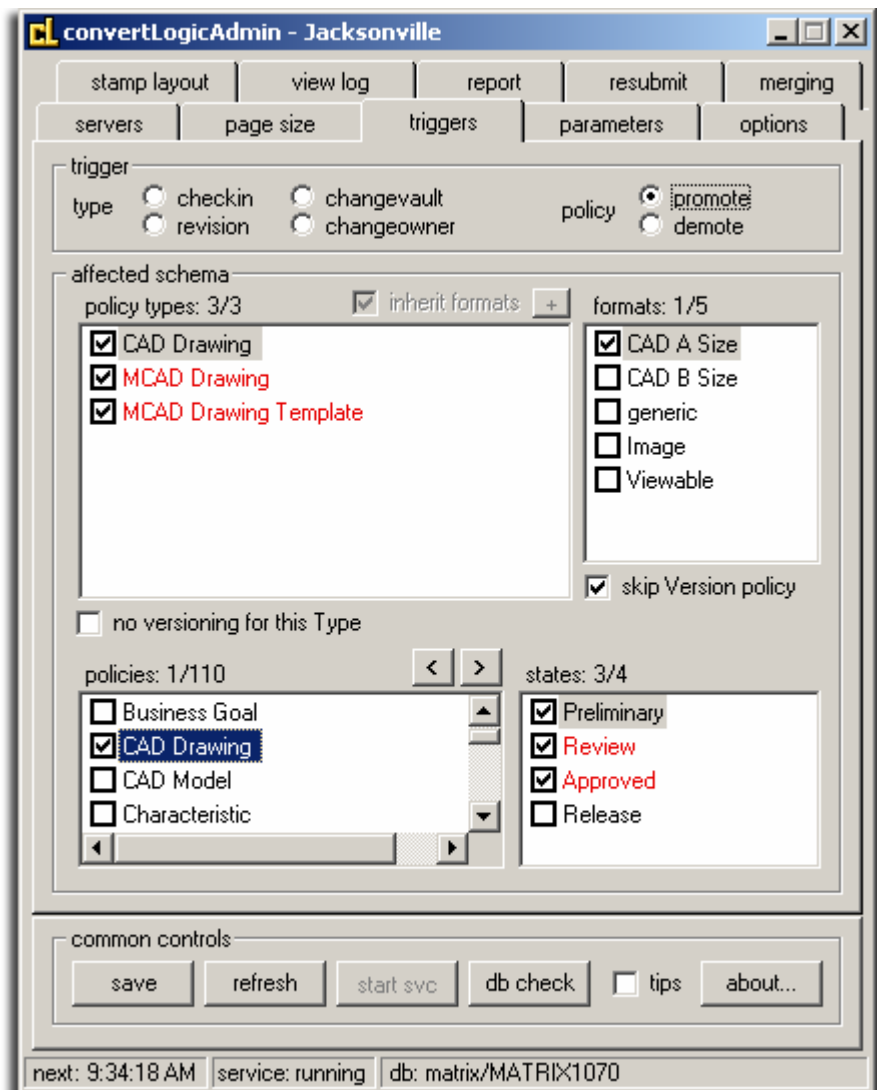


convertLogic

Automated PDF and TIFF Rendering with Metadata Stamping

KEY FEATURES

- Automatically checks out, converts, and checks in files
- Provides seamless, automated PDF or TIFF rendering of over 300 file formats including CAD and MS Office
- No user interface – enables regulatory compliance by eliminating user interference
- Point-n-click administrator utility—requires no programming
- Allows stamping of virtually any metadata onto rendered files
- Built-in fault monitoring and notification process
- Advanced tracking logs processing details to file
- Mail notifications of successes, failures, and critical errors
- Ensures synchronization of converted files with native files
- Honors all access rights set within Enovia MatrixOne
- Supports multi-site installations—integrates with Site definitions in Enovia MatrixOne
- Runs as a true Service—automatically restarts without administrator interaction
- UNC path capable for compatibility with UNIX and Windows installations of Enovia MatrixOne
- Reduces administrative overhead of programmers and support personnel assigned to file conversion and quality control



convertLogicAdmin triggers tab

DESCRIPTION

convertLogic is fully integrated with Enovia MatrixOne applications and works in conjunction with AdLib Express to provide seamless, automated conversion and metadata stamping of files from your Matrix database into PDF or TIFF format. No user interaction is required.

convertLogic consists of 3 components:

1. convertLogic (Server) – runs as a true NT Service. **convertLogic** periodically queries Matrix (administrator controlled) to automatically process each file that is queued for rendering. The server application checks files out of Matrix and checks in the successfully converted files. Numerous other functions are built in including success/failure notification, automatic queue preservation and automated shutdown/restart of Express.

2. convertLogicAdmin – allows full control of every parameter required for **convertLogic**, plus control of the file queue. The intuitive interface is clearly presented on tabs for each major functional group:

- File queue management
- Conversion parameters
- Setup and modification of triggers
- Audit trail for all rendering (success and error logging)
- Site management for multiple **convertLogic** installations
- Metadata stamp layout

3. Matrix Triggers – automatically created/modified from within **convertLogicAdmin**. Up to 6 different trigger types can be managed providing incredibly powerful conversion and metadata stamping options. Since **convertLogic** is trigger based, it works with all Enovia MatrixOne versions.

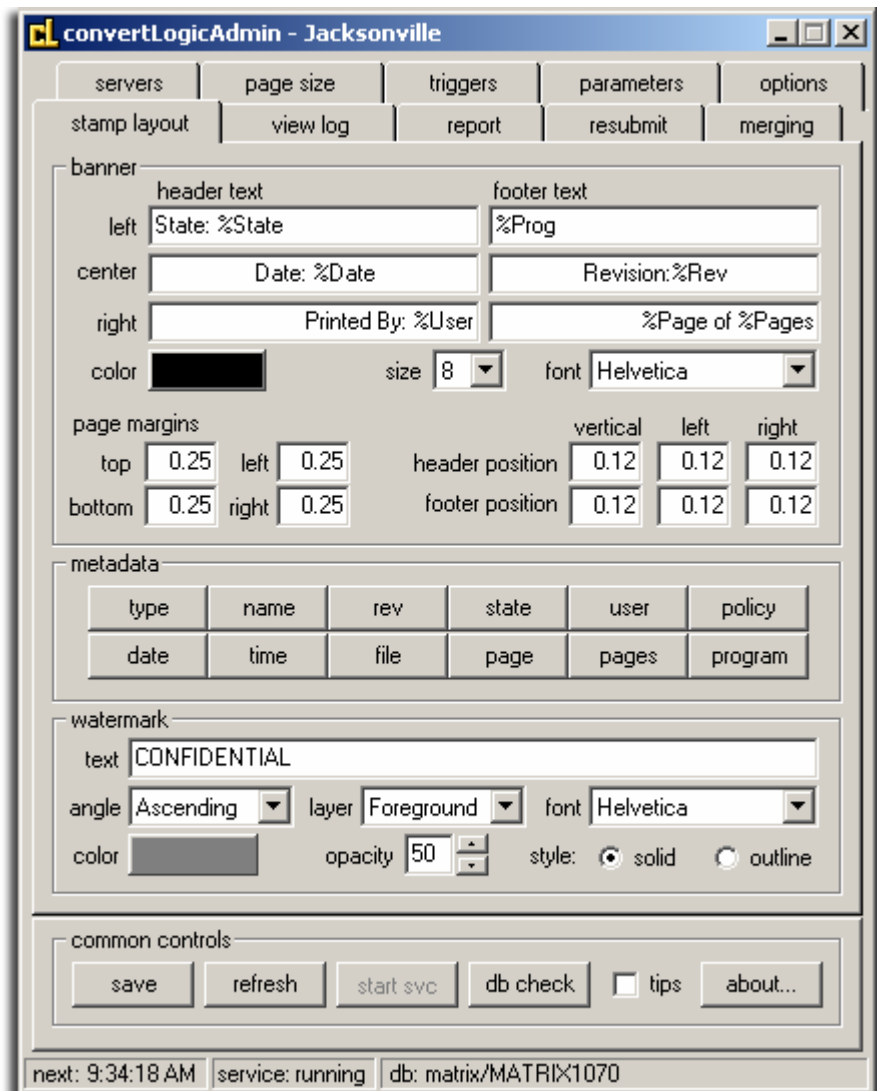
ADDITIONAL FEATURES

convertLogic (Server)

- File logging of conversion process (continuous or daily)
- Mail notifications for success or failure
- Mail notifications to Admins for service interruptions
- Automatic shutdown of Express upon critical errors
- Automatic queue retention upon critical error (FIFO order)
- File-based bulk conversions
- Remote monitoring using free application CLMonitor
- Encrypted password protection

convertLogicAdmin

- Automatic installation of schema elements
- Self-diagnostic and repair upon startup
- Automatic tracking of upcoming conversions
- Direct viewing of conversion log files
- Queue control – remove any or all queued files
- Start/Stop **convertLogic** NT Service
- Point-n-click interface for setting all available **convertLogic** parameters



convertLogicAdmin stamp tab

For more information, a **convertLogic demo** is available on our website at: CoastalLogic.com/convert.html