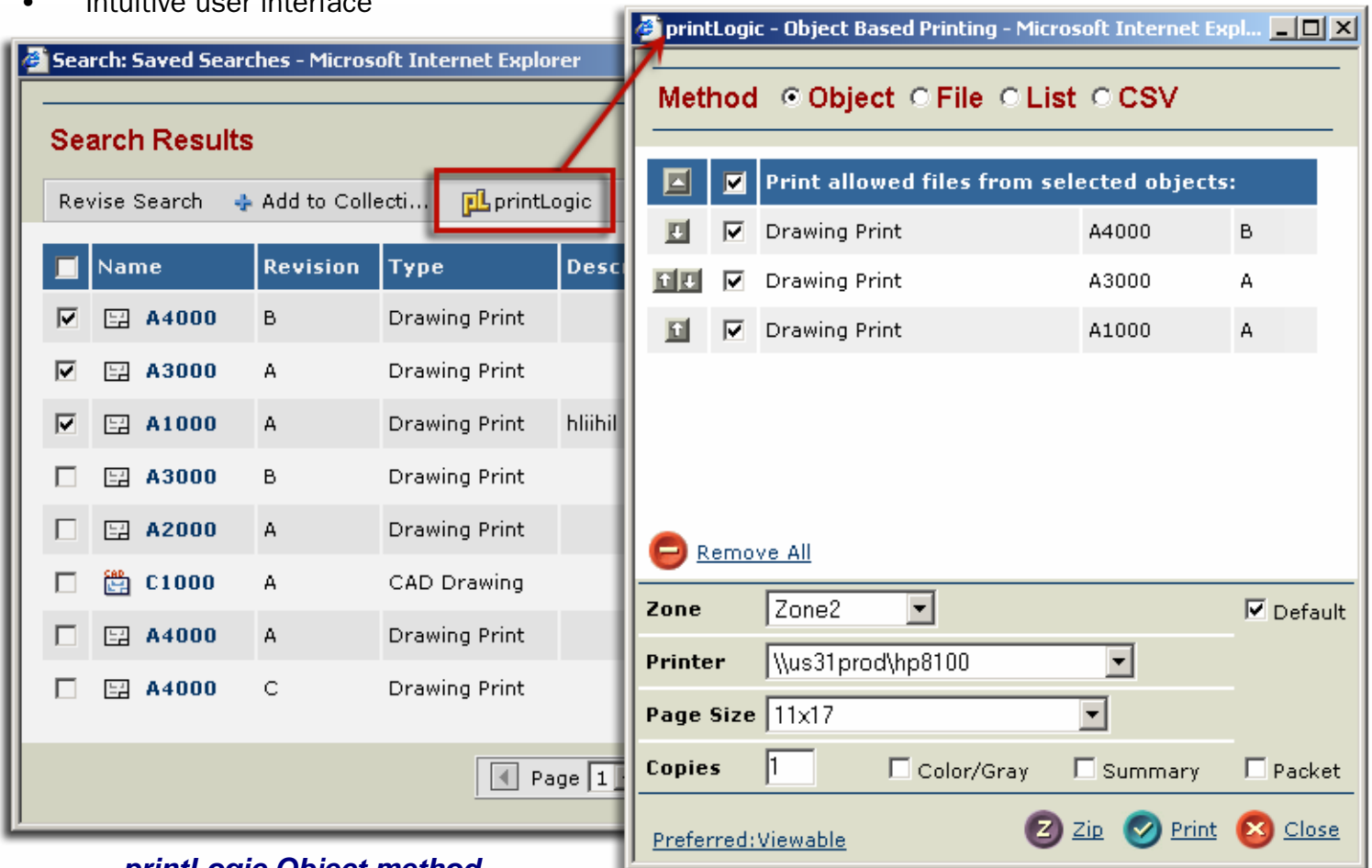


# printLogic

## Batch Printing & Metadata Stamping for Enovia MatrixOne

### KEY FEATURES

- Provides seamless batch printing and metadata stamping of files
- Enables regulatory compliance by eliminating user modification/bypass of stamps
- Eliminates the need to use viewing software for printing
- EFCS Savvy—automatically uses EFCS checkout when necessary
- Fully integrates with all Centrals
- Automatically applies multiple metadata stamp templates at print time based on Object, Type, State, or Format
- Reduces overhead of administrators for maintaining secure printing of metadata
- Supplies administrators with a point-n-click interface for setting parameters—no programming required
- Allows printing and metadata stamping of individual files or compound Object Lists
- Server based—zero client footprint
- Intuitive user interface



The screenshot shows two overlapping windows from Microsoft Internet Explorer. The background window is titled "Search: Saved Searches - Microsoft Internet Explorer" and displays "Search Results" for "printLogic". It contains a table with columns: Name, Revision, Type, and Desc. The table lists several entries, including A4000, A3000, and A1000, all categorized as "Drawing Print". A red box highlights the "printLogic" search filter.

The foreground window is titled "printLogic - Object Based Printing - Microsoft Internet Expl...". It features a "Method" selection area with radio buttons for "Object", "File", "List", and "CSV", where "Object" is selected. Below this is a table titled "Print allowed files from selected objects:" with columns for checkboxes, file names, and object IDs. Three entries are listed, all checked. At the bottom, there are configuration fields for "Zone" (Zone2), "Printer" (\\us31prod\hp8100), "Page Size" (11x17), and "Copies" (1). There are also checkboxes for "Color/Gray", "Summary", and "Packet". A "Remove All" button is visible. At the bottom right, there are buttons for "Zip", "Print", and "Close".

*printLogic Object method*

## DESCRIPTION

**printLogic** consists of two components—the **administrator utility** and the **user interface**.

The admin application, **printLogicAdmin**, enables administrators to set all available parameters for the printing and metadata stamping, and to visually create the metadata stamps and the print stamping rules. (The **printLogicAdmin Stamp Layout** window is shown below.)

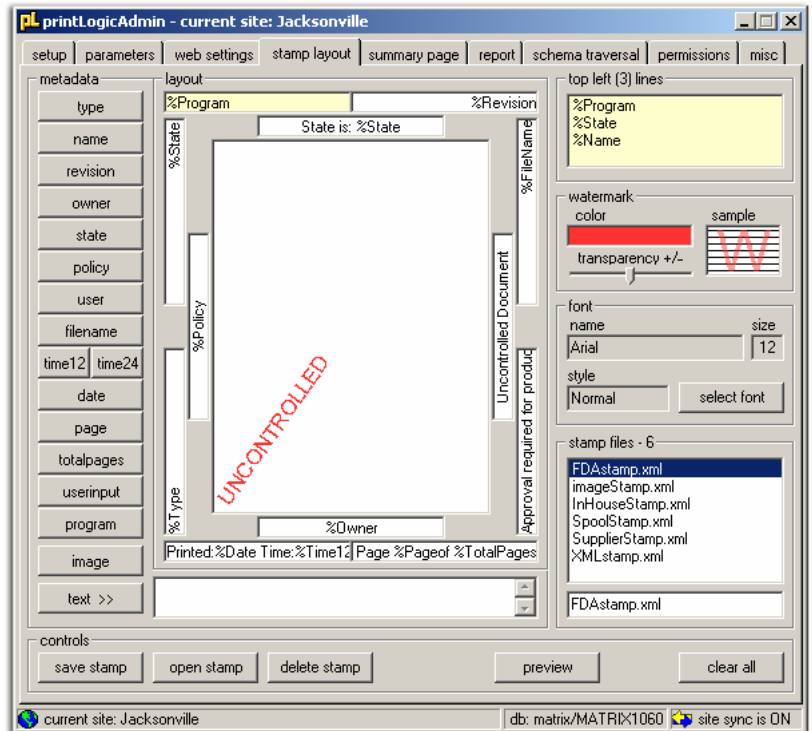
### printLogicAdmin

Point-n-click interface for setting all available **printLogic** parameters including:

- Determine printable Object Types, Formats and States
- Assign different metadata stamps to Types, Formats or States

Stamp creation (see screenshot):

- Standard metadata
  - Type - Name - Revision
  - Owner - State - Policy
  - User - Time - Date
  - Filename - Page - Totalpages
- Program execution for custom metadata retrieval
- 12 banner zones each with multiple lines
- One watermark zone, including color and density
- Font size and style



The **user interface** allows printing and metadata stamping of individual files or compound Object Lists as permitted by the administrator.

### printLogic (user interface)

The **printLogic** user interface provides 4 different methods of printing documents from within your Matrix database:

#### Object

- Prints all files the user is allowed to print within each selected Object

#### File

- Presents all files the user is allowed to print for the selected Objects
- Prints only the selected files

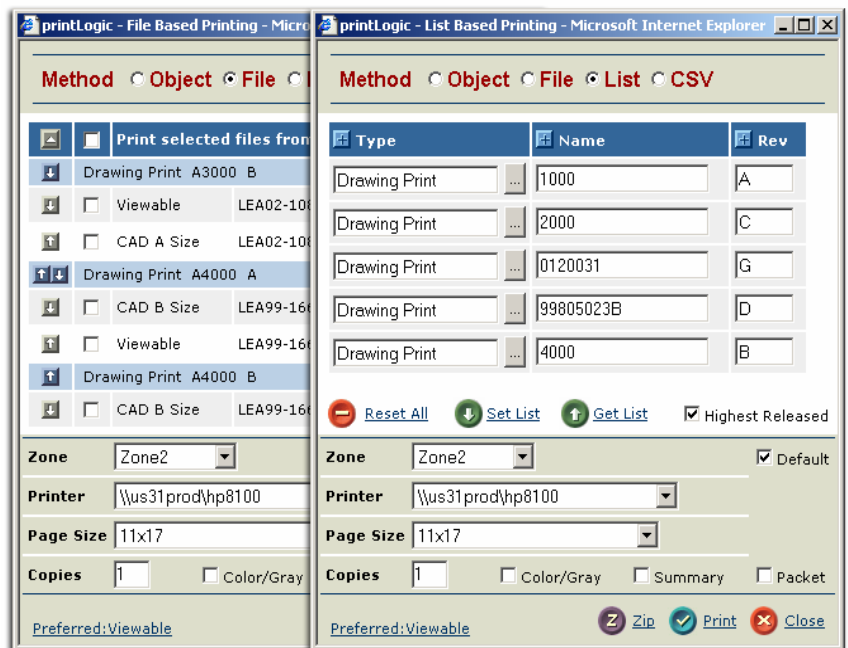
#### List

- Allows user to enter the T/N/R of Objects into a scrolling list and print all allowable files within each Object.
- Does not require a Matrix search

#### CSV

- Allows user to upload .csv files with lists of objects to print.

*Users must have Matrix checkout privileges to print*



**The printLogic File and List method windows**

For more information, a **printLogic demo** is available on our website at: [CoastalLogic.com/print.html](http://CoastalLogic.com/print.html)