

NASPAC-Briggs University *presents*

Cost-Effective Web-Based

TRAINING and CERTIFICATION PROGRAMS:

- NASPAC's Certification Program for Nurse Assessment Coordinators
- MDS Beginner's Course Line by Line

for Long-Term Care Professionals and Administrators

Gain the skills you need to maximize proper management of the Minimum Data Sets!

NASPAC's Certification Program for Nurse Assessment Coordinators Course Consists of Learning Modules for:

- Coordinating the MDS/PPS process
- MDS/Documentation review
- Record review
- PPS-RUG III
- Billing issues and concerns
- Quality Indicators and Measures essentials
- RNAC's roles, responsibilities and team development

CEU's: 14 CEU hours of continuing education will be provided for the Certification Course for Nurses and Administrators.

This course is offered with and without the test for certification. The certification expires every three years.

Candidates for the Certification Examination must meet the following criteria:

- Current professional licensure as an RN, LPN or ADM
- Current employment in a SNF or subacute unit, OR current employment in a related/associated field, OR a minimum of 1,000 hours of active employment within the past twelve months in any of the above areas
- Current or recent experience as a Nurse Assessment Coordinator, OR responsible for the coordination, accuracy and the completion of the resident assessment process, OR actively involved with the above

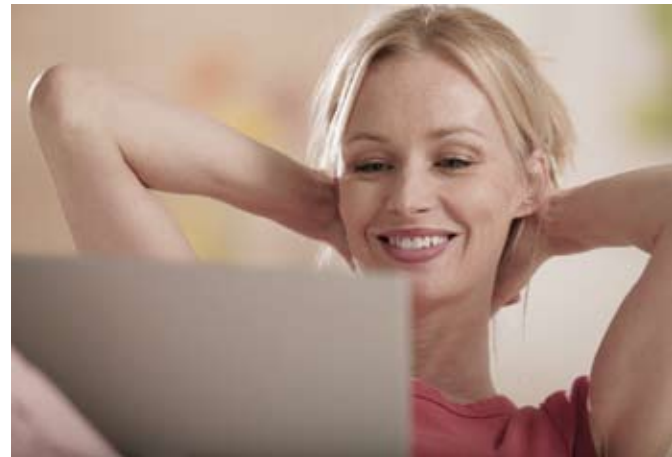
Clinicians who pass the Certification Examination will be deemed Certified Registered Nurse Assessment Coordinators.

To be recertified the course must be completed every three years.

MDS Beginner's Line by Line Course

Consists of Learning Modules for:

- Linking MDS to outcomes
- Learning how MDS affects quality of care
- Understanding the implications of your MDS response
- Accurate assessing the resident for each MDS line item
- 7.4 CEU hours



Earn CEU Credits

No Travel Expenses

*Conveniently Complete Courses
When and Where You Like*

Sign Up Today!

Visit <http://corporate.bellevue.edu/naspac/>

NASPAC

Briggs[®]

C O R P O R A T I O N

Knowledgeable Answers. Proven Solutions.

Sponsored by the National Association of Subacute and Post-Acute Care (NASPAC) and Briggs Corporation in collaboration with Bellevue University