

WisdomLive!

Your Complete Solution to
Business Process Management



Collaboration
Project Management
Communication
Performance Improvement

WisdomLive! is an innovative solution for managing people, tasks and information. Its simple and familiar interface ensures that your team can be up and working quickly and efficiently.

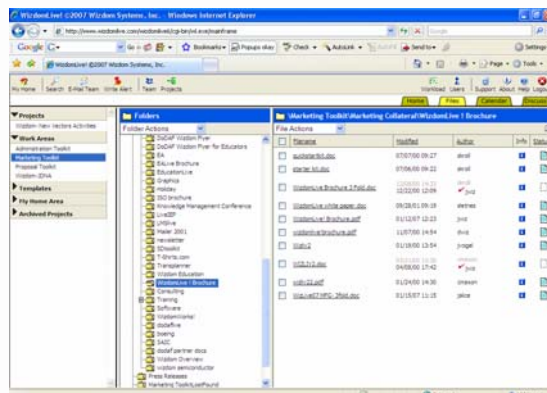
- Increase team productivity.
- Leverage the time and skills of your key people.
- Increase communication internally & externally. Share information with your team directly and instantly.
- Manage and control complex assignments by containing important information in one central location.
- Manage program knowledge and records.
- Handle the unexpected with ease. Easy file manager allows "repurposing" of documents for quick-turnaround projects and proposals.
- Control Corporate Content & Security. Project Managers decide who gets to see which documents.

Created by the people who wrote the books on BPR and Enterprise Architecture, **WisdomLive!** is the practical, real-world solution to managing projects, people, and tasks.

WisdomLive! is a powerful web-based business management tool that helps you manage a multitude of business activities and their associated knowledge.

WisdomLive! helps you and your organization get more done, and done quickly and efficiently. It provides an online means for sharing information, as well as working together in teams.

As a complete Business Process Portal, **WisdomLive!** is ideal for project and process planning. Its intuitive design allows you to easily communicate and organize communication among managers and team members.



Use **WisdomLive!** to assemble your best team...wherever they live, anywhere in the world.

- Connect your team via a private confidential information system.
- Create a process to address the business issue at hand.
- Manage an enterprise-wide business solution to a successful conclusion.

Wisdom
the "process" people

The Robust Features of WIZDOMLIVE!

Collaboration

- *WisdomLive!* helps plan improvement projects, implement them, and then archive the results so that they may be referred to again and again
- Generates your Project Plan, and then manages the project using the Project Plan as a "collaboratory"
- Contains a repository, or data bank of already completed projects, from which to draw upon and learn from
- Was developed to enable organizations to predict the impacts of incremental or radical changes to business processes

Project Management

- Enables the entire team to efficiently manage the schedule, team assignments, project documents, deliverables, budgets and cultural impact in a very effective way, end-to-end
- Incorporates calendars to keep the entire team on top of key events. The new discussion capabilities allow everyone to participate in knowledge sharing, even if they're on the other side of the world.
- New Gantt chart, which is compatible with MS Project, shows the team who's doing what, and when.
- Manages a multitude of ongoing activities and knowledge. Captures data in a secure collaborative environment which can then be accessed by any user no matter where they are on the globe.

Communication

- Robust three-tier security design ensures that organizations and their partners have secure access to project content
- Works on an easy web-based platform.
- Links to MS Outlook Calendar
- Provides web links to pointers in Asset Explorer so that the user is connected to web data anytime
- Can be linked to your favorite wireless (PDA) device for anywhere/anytime interaction
- Expert system Risk Manager can be used to automatically create process and project plans
- Add announcements to project home pages to better communicate with team members
- Automatically alerts team members when they are assigned a task to the project plan
- Automatically posts the five most recently updated documents to easily find files and work products
- Improved project management module makes project management faster and more effective
- Updated discussion page makes communication a breeze

Performance Improvement

- Archives completed projects, providing valuable feedback and templates for continuous improvement.
- Contains ready to use templates for change management, hiring personnel, making acquisitions, and more
- Organizations can:
 - Identify current processes
 - Determine optimum changes
 - Predict the impact of the changes
 - Implement the changes in a controlled way

How to Use *WisdomLive!*

1. As a project team is being formed, *WisdomLive!* assesses the skills of each individual member. It determines what skills need to be improved upon, and makes recommendations on how to do so. At this point, ***WisdomLive!* is a tool for organizational diagnostics.**
2. Next, ***WisdomLive!* automatically develops a project plan and distributes tasks to team members.** Thus, *WisdomLive!* becomes the **Project Manager!** All project transactions are logged by *WisdomLive!* as the project is conducted and the team members interact. For example, when a project team member needs information about a particular subject, *WisdomLive!* automatically searches and returns the information. *WisdomLive!* is not only the Project Manager, but a **Knowledge Library!**
3. As events are logged in, and documents are checked in and out, *WisdomLive!* enables pointers which connect goals and necessary information to support those goals.
4. New project team members added to the project have access to every transaction carried out by the old team members. This ensures smooth handoffs of responsibilities.
5. *WisdomLive!* learns! Each succeeding project enriches the *WisdomLive!* knowledge database. Thus, each new project team can be smarter than the last. Knowledge which once walked out the door daily, now becomes a true corporate asset which can be managed Live!

Client List *complete version available online*

AT&T Bell	Hughes Aircraft	U.S. Air force
Boeing	IBM Corporation	U.S. Army
Booz Allen Hamilton	Intel	Xerox
CACI, Inc.	Johnson Controls, Inc.	
Department of Defense	Lockheed	
Defense Logistics Agency	Missile Defense Agency	
Ford Motor Company	NASA	
General Motors, Inc.	Shell Oil Company	

Wisdom Systems, inc.

1300 Iroquois Avenue
Culver City, CA 90232
630-357-3000 *phone*
630-357-3059 *fax*
www.Wisdom.com



Product Requirements:

WisdomLive! is available as a service directly from the Wisdom server. It can be installed on your Windows server or on your favorite ASP. The client system requires at least Internet Explorer 6x.

About Wisdom:

Since 1986, **Wisdom** has been a recognized leader in providing clients with innovative process-based business and software solutions. Wisdom's integrated software, training and consulting enables industry and government clients to communicate, plan and execute a unified strategy.