

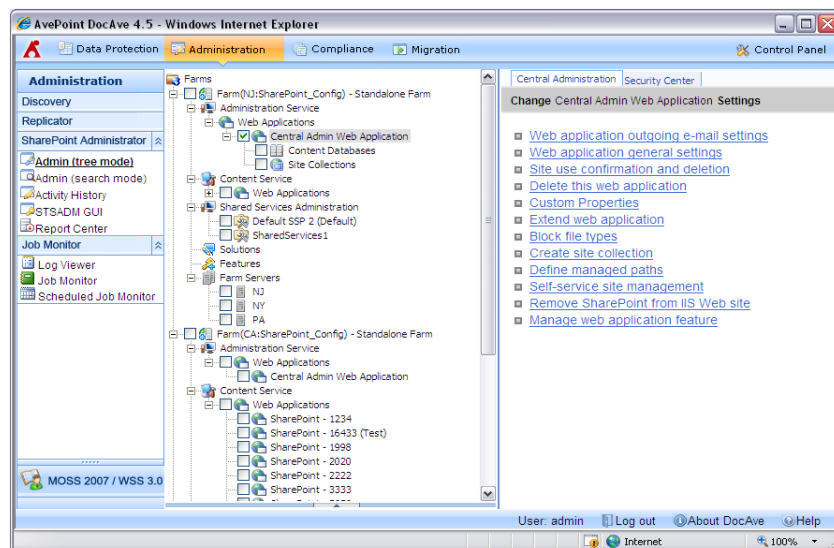
# Simplify Administration with Truly Centralized SharePoint Management

## DocAve™ SharePoint Administrator New for SharePoint 2007!



### Truly Centralized Administration of Enterprise Microsoft SharePoint 2007 Deployments

The DocAve SharePoint Administrator module is designed to give organizations universal control over their enterprise-wide SharePoint environments, from an individual farm to hundreds of farms or more, all from a single interface.



Leveraging DocAve's unique distributed architecture, SharePoint Administrator offers a central console for administrators to easily view, search, manage, report, and replicate configuration, security and/or content of SharePoint objects individually or in bulk. You can apply rule based searches across all SharePoint deployments from farms, web application, site collections, sites, and down to the folder and list level, and deploy configurations and security permissions to the search result in bulk or selectively. Searches can even be saved and used again. Securities and configurations can now be easily managed and applied at the item level across ALL your SharePoint deployments.

DocAve also offers item-level full fidelity Backup and Restore, full SharePoint Platform Recovery, High Availability, Archiving, Replication, Compliance and Migration solutions



Backup & Recovery

Administration & Replication

Compliance

Migration to SharePoint

Changing the way Administrators  
Manage SharePoint

### Business Advantages

- **Improve IT productivity and reduce administration costs**  
SharePoint Administrator allows instant discovery of new sites, control of access permissions for each level of responsibilities, and completely centralizes management and application control. It allows organizations to reduce costs associated with deployment and management of a complex SharePoint infrastructure, regardless of number of servers or farms.
- **Simplify and unify management across entire organization**  
Administrators can easily identify SharePoint assets dispersed across the enterprise using a rule-based search, and propagate configuration and security permissions to web applications, sites, folders, and lists in bulk or selectively, resulting in quicker time-to-value of each update.
- **Reduce security, compliance, and performance risks**  
SharePoint Administrator simplifies user security management, usage and storage monitoring, and global policy control. It facilitates the deployment of policies that are normally difficult to implement and control across an entire enterprise. In addition, security permissions can be applied granularly at the item level across all SharePoint deployments.

## Functions of SharePoint Administrator

### Real-time Discovery and Monitoring

- Perform discovery/search functions across SharePoint farms. Graphically display server topology along with server functions, including their relationships, roles, services, and system health.

### Administration and Security Management

- Perform all of the *SharePoint Central Administration* functions, that can normally only be performed for a single web application at a time, across multiple web applications and farms at any SharePoint object level from a unified interface (selectable in tree mode or returned via the global search).
- Manage configurations, security, solutions and features globally with easily defined groupings of sites or farms, for simplified management by the type of environment, physical location, or business function.
- Simplify selections with rule-based search of SharePoint assets and rule-based user security search in a global environment.
- Manage and update user security across multiple objects at all levels from both user- and SharePoint-centric perspectives.

### Advanced STSADM Graphical User Interface

- Centrally plan, schedule, and execute STSADM commands easily via DocAve's Web-based interface.

### Management and Reporting

- Schedule all administrative functions for the environment or components of the environment and enforce policies.
- Run sophisticated enterprise reports on your SharePoint environment, including system health and action history.
- E-mail, capture, and archive all administrative actions for real-time alerts, on-demand review, or to satisfy compliance or audit requirements.
- Manage roles and permissions at any level and delegate management of properties to local Administrators, concealing unauthorized objects.

## How To Buy DocAve

Call 1-800-661-6588

E-mail [Sales@AvePoint.com](mailto:Sales@AvePoint.com)

**Request Personalized Product Demo at [www.avepoint.com](http://www.avepoint.com)**

### For Government Organizations:

The DocAve software can be purchased directly from AvePoint or through the GSA Website at [www.GSAadvantage.gov](http://www.GSAadvantage.gov).



### AvePoint

3 Second Street, Suite 202  
Jersey City, NJ 07311, USA  
Phone: (201) 793-1111  
Fax: (201) 217-8709

For more information visit [www.AvePoint.com](http://www.AvePoint.com)



AvePoint, the creator of the award-winning DocAve platform, specializes in enterprise-strength backup, recovery, and data management solutions for Microsoft® SharePoint® products and technologies. The pioneering DocAve software gives administrators essential tools to easily backup and manage SharePoint deployments from individual items to entire farms and maintains a true fault-tolerant 24x7 infrastructure.

AvePoint was founded in 2001 and now has over 1600 customers worldwide, many of them Fortune 500 companies. Customers include: AAA, American Red Cross, AVAYA, Bill & Melinda Gates Foundation, Bloomberg, BOSE, Children's Memorial Hospital, conEdison, Deloitte & Touche LLP, Hitachi, ING, NASA, Northwestern University, PSE&G, Unisys, United States Army, United Way and many more.

