

# NEW ZEALAND

# KIWI EXPERIENCE

**FLEXIBLE TRAVEL PASSES**  
FOR BACKPACKERS AND INDEPENDENT TRAVELLERS



**2007/08**  
TRIP + PRICE GUIDE

New Zealand Edition  
Valid: 01 October 2007 - 31 March 2008



# KIA ORA AND WELCOME!

KIWI EXPERIENCE IS THE ORIGINAL BUS TRAVEL NETWORK OFFERING YOU SOME OF THE MOST UNFORGETTABLE EXPERIENCES YOU'LL FIND ON THE PLANET.



**EXCLUSIVE**

**JUST SOME OF THE  
EXCLUSIVE DEALS  
AND DISCOUNTS  
WHEN YOU TRAVEL WITH  
KIWI EXPERIENCE.**

- \$18 off Tamaki Maori Village, Rotorua
- \$25 off Black Water Abyss, Waitomo
- \$11 off Black Water Labyrinth, Waitomo
- \$10 off full day glacier hike, Franz Josef
- \$15 off bungee jumping, Queenstown

**...AND LOADS MORE!**



# GET OFF THE BEATEN TRACK. WHETHER YOU'RE AN ADRENALIN JUNKIE, A NATURE FANATIC, A BEACH BUM OR JUST WANTING TO BLOW YOUR MIND WITH THE MOST AWE-INSPIRING LANDSCAPES, KIWI EXPERIENCE IS THE TRIP OF A LIFETIME!

Travel with Like-Minded People



- **Developed for travellers, by travellers.** Our extensive bus network offers the most flexible travel throughout New Zealand.
- **Flexible travel.** You have the freedom and flexibility to hop on and off along the way wherever you want for a whole year from your first day of travel.
- **Your time.** Whether you have limited time or all the time in the world, you can design your trip from over 20 pass options staying in each place as long as you like. And you can get on and off ANYWHERE along the way.
- **Driver Guides.** Our experienced and fully trained Driver Guides will show you the real New Zealand. Their commentary, insights and advice will help you experience the culture and really discover our country. These guys are passionate about our country!
- **Accommodation.** We can book your accommodation along the way, getting you discounts and guaranteeing your first nights accommodation at every overnight stop.
- **The real Maori cultural experience.** We offer a real and raw cultural experience. Our Driver Guides will help you understand and experience our heritage throughout New Zealand. ONLY Kiwi Experience takes you to the East Coast for a truly unique and genuine Maori cultural experience all year round.
- **Off the beaten track.** We are an 'off the bus experience' and we will stop to see the real New Zealand - often places you won't find in the guide books.
- **Unique overnight stops.** We've sorted some special nights for you on your trip around our country, offering the ultimate in uniquely New Zealand experiences:
  - River Valley** - an amazing adventure lodge, only in New Zealand
  - Te Kaha Lodge** - stay with a very welcoming Maori whanau (family) on the East Cape
  - Rangitukia** - a farmstay on the East Cape
- **Awesome deals and discounts on activities.** When you travel with us, we'll get you the best deals - discounts saving you hundreds of dollars on activities, and exclusive freebies that are worth getting worked up about.
- **Free stuff.** Included in our passes are loads of unique experiences that won't cost you a cent, from sandboarding to national park walks to behind the scene bungy tours. Exclusive to Kiwi Experience. Check them all out on page 4.
- **Green not mean.** We believe in sustainable eco-tourism and we'll help you understand the culture without damaging the delicate eco-systems.
- **Get amongst it.** Find out more from your travel agent or check out our website. Then book your trip. Don't miss out!



## SWEET AS!



**Translation**

"Chill out, take your time, anything goes!"



# UNIQUE EXPERIENCES

## FREE STUFF WITH KIWI EXPERIENCE

### THE FOLLOWING UNIQUE EXPERIENCES ARE FREE, ALL INCLUDED WITH YOUR KIWI EXPERIENCE PASS.\*

\* no joke - these are free. Better bang for your buck. We give you more free inclusions so you have a better time. Sweet as.



#### ➤ Sandboarding, Cape Reinga

Sandboard down gigantic sand dunes at the very top of New Zealand where the Pacific Ocean meets the Tasman Sea.



#### ➤ Free Ferry, Russell

Free Fullers ferry from Russell to Paihia when purchasing selected Fullers activities.

#### ➤ Cathedral Cove, Coromandel

Only accessible by foot or by boat, check out one of NZ's most scenic coastal spots. Tides permitting, dig in the sand and make your own hot pool at Hot Water Beach.



#### ➤ Realm of Tane, Rotorua

Only Kiwi Experience offers the "Realm of Tane" FREE in Rotorua. A genuine Maori encounter, and introduction to your hangi experience.

#### ➤ Te Puia 'Hands On', Rotorua

Experience and learn the legendary 'haka' and 'poi' at Te Puia with one of NZ's leading Maori cultural groups.



#### ➤ Marae Tour of Whangara, East Coast

One of the most cultural and historically significant places on the East Coast. Receive a full tour of the marae by one of the local people and learn the history of this very special place.

#### ➤ Hot Pools, Kawerau

Used by the local Maori for hundreds of years for their healing properties, these springs are sure to mend whatever ails you.



#### ➤ Secrets of Bungy, Queenstown - worth \$20!

Learn all about the "Secrets of the Bungy" in Queenstown. More than just a visit to the Kawarau Bridge, this is a fun, informative and interactive tour.

#### ➤ Milford Sound Experience - \$128 worth of free stuff!

Experience the wonder and beauty of Milford Sound during a two hour cruise worth \$80. This trip includes a FREE hot buffet lunch worth \$28 and a visit to the underwater observatory, worth \$20!



#### ➤ Paua Factory, Riverton

Receive a free paua shell pendant on the Bottom Bus visit to the Paua Factory Shop en route from Invercargill to Te Anau.

#### ➤ Karangahake Gorge

Explore a native bush-clad gorge, a swing bridge or two and a 1km long tunnel. Awesome views!



#### ➤ Ruakuri Walk

Spectacular walk through the limestone cave formations of Waitomo.

#### ➤ Taranaki Falls

This walk has amazing views and on a clear day the symmetrical cone of Mt Ngauruhoe and the older more eroded mountains of Tongariro and Ruapehu can be seen.



#### ➤ Nelson Lakes National Park

Different walk options that all offer tranquil beech forest, craggy mountains, clear streams and lakes both big and small.

#### ➤ Cape Foulwind

An excellent track to the viewing platforms overlooking the seal-breeding colony.

#### ➤ Punakaiki Pancake Rocks

Punakaiki is best known for its Pancake Rocks and Blowholes, both of which are spectacular and a must-see when visiting the West Coast.

#### ➤ Lake Matheson

A West Coast icon, Lake Matheson provides amazing late afternoon reflections, early morning sunrises and spectacular sunsets.

## Where can I get off?

Anywhere! We show you where you get guaranteed accommodation on arrival (green), other important places you'll hear us talk about (white) and places our mates can help get you to (dotted lines). Anywhere else along the way (the black line running all around the country) you can get off the bus and check out the rest of New Zealand! It's your trip, you decide.

## NEW ZEALAND

### Map Key

-  Kiwi Experience route
-  Overnight stop - guaranteed accommodation when you arrive
-  Other 'sweet' stops
-  Unique accommodation
-  National Parks
-  Ghost Train
-  Our mates can get you here



Loads of Unique Experiences

05

## The Route

Each route can be used once in the direction of the arrow on the map. Christchurch to Picton sector is travelled twice on our Kea and Top Dog passes.

## Planning your stops

If you're wondering how long you should stay in each place ... well, it depends on the time you have and what you want to experience. Ask your Driver Guide and have a read of our guide book.

# NATIONAL PASSES STARTING ANYWHERE

# PASSES DEPARTING AUCKLAND

# PASSES DEPARTING CHRISTCHURCH

## Funky Chicken

Recommended minimum travel time  
20 days  
**Pass Guidelines**  
Start anywhere, finish where you started

(\$NZD)  
STANDARD  
**\$960**  
YHA/ISIC/VIP  
/NOMADS  
**\$940**



## Sheep Dog

Recommended minimum travel time  
16 days  
**Pass Guidelines**  
Start Auckland, finish Christchurch

(\$NZD)  
STANDARD  
**\$759**  
YHA/ISIC/VIP  
/NOMADS  
**\$749**



## Dog Leg

Recommended minimum travel time  
13 days  
**Pass Guidelines**  
Start Christchurch, finish Auckland

(\$NZD)  
STANDARD  
**\$729**  
YHA/ISIC/VIP  
/NOMADS  
**\$719**

**CHOOSE GHOST TRAIN DOG LEG** and travel by train from Christchurch to Greymouth.

(\$NZD)  
**\$809**



## Rangi

Recommended minimum travel time  
21 days  
**Pass Guidelines**  
Start anywhere, finish where you started

(\$NZD)  
STANDARD  
**\$1049**  
YHA/ISIC/VIP  
/NOMADS  
**\$1029**



## Zephyr

Recommended minimum travel time  
17 days  
**Pass Guidelines**  
Start Auckland, finish Christchurch

(\$NZD)  
STANDARD  
**\$845**  
YHA/ISIC/VIP  
/NOMADS  
**\$835**



## Gumbboot

Recommended minimum travel time  
14 days  
**Pass Guidelines**  
Start Christchurch, finish Auckland

(\$NZD)  
STANDARD  
**\$815**  
YHA/ISIC/VIP  
/NOMADS  
**\$805**



## The Whole Kit & Caboodle

Recommended minimum travel time  
27 days  
**Pass Guidelines**  
Start anywhere, finish where you started

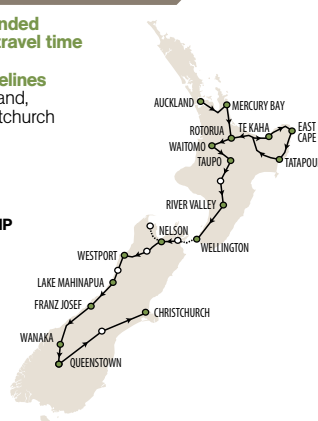
(\$NZD)  
STANDARD  
**\$1519**  
YHA/ISIC/VIP  
/NOMADS  
**\$1499**



## Joint Mullets

Recommended minimum travel time  
20 days  
**Pass Guidelines**  
Start Auckland, finish Christchurch

(\$NZD)  
STANDARD  
**\$1099**  
YHA/ISIC/VIP  
/NOMADS  
**\$1089**



## Kea

Recommended minimum travel time  
15 days  
**Pass Guidelines**  
Start Christchurch, finish Auckland

(\$NZD)  
STANDARD  
**\$739**  
YHA/ISIC/VIP  
/NOMADS  
**\$729**



## The Full Monty

Recommended minimum travel time  
31 days  
**Pass Guidelines**  
Start anywhere, finish where you started

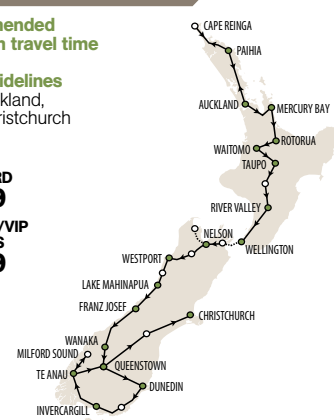
(\$NZD)  
STANDARD  
**\$1850**  
YHA/ISIC/VIP  
/NOMADS  
**\$1830**



## Kitchen Sink

Recommended minimum travel time  
23 days  
**Pass Guidelines**  
Start Auckland, finish Christchurch

(\$NZD)  
STANDARD  
**\$1309**  
YHA/ISIC/VIP  
/NOMADS  
**\$1299**



## Top Dog

Recommended minimum travel time  
16 days  
**Pass Guidelines**  
Start Christchurch, finish Auckland

(\$NZD)  
STANDARD  
**\$825**  
YHA/ISIC/VIP  
/NOMADS  
**\$815**



**MILFORD SOUND CRUISE INCLUDED**

# REGIONAL PASSES

## Bay of Islands

**Recommended minimum travel time**

- 2 days (Awesome)
- 1 day (Top Bit)
- 3 days (Awesome & Top Bit)

**Pass Guidelines**

Awesome: Auckland - Paihia Return  
 Top Bit: Cape Reinga Day Trip  
 Awesome & Top Bit: Both passes combined

(\$NZD)  
**AWESOME**  
 \$89  
**TOP BIT**  
 \$89  
**AWESOME + TOP BIT**  
 \$178

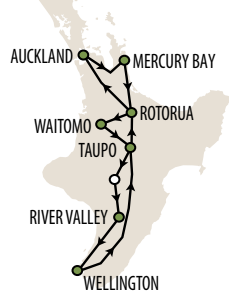


## Northern Round-up

**Recommended minimum travel time**

- 9 days
- Pass Guidelines**  
 Start anywhere in the North Island, finish where you started

(\$NZD)  
**\$449**

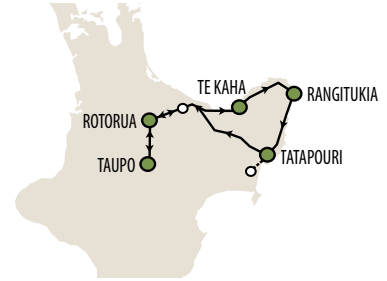


## East As

**Recommended minimum travel time**

- 4 days
- Pass Guidelines**  
 Start Taupo, finish Taupo

(\$NZD)  
**\$340**



## Geyserland & Lake

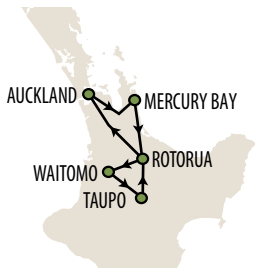
**Recommended minimum travel time**

- 3-4 days (Geyserland)
- 5-6 days (Geyserland & Lake)

**Pass Guidelines**

Start Auckland, finish Auckland

(\$NZD)  
**GEYSERLAND**  
 \$249  
**GEYSERLAND & LAKE**  
 \$275



## Waitomo Day Trip

**Recommended minimum travel time**

- 1 Day
- Pass Guidelines**  
 Start Rotorua, finish Rotorua

(\$NZD)  
**\$149**

**INCLUDES BLACK LABYRINTH TOUR**



## Milford Explorer

**Recommended minimum travel time**

- 1 day
- Pass Guidelines**  
 Start Queenstown, finish Queenstown

(\$NZD)  
**\$159**



**INCLUDES FREE HOT BUFFET LUNCH**

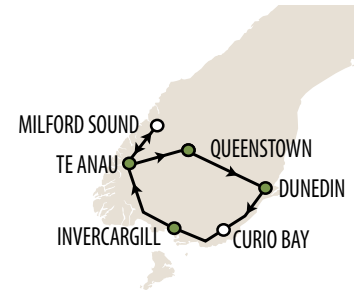


## Southlander - Bottom Bus

**Recommended minimum travel time**

- 4 days
- Pass Guidelines**  
 Start Queenstown, finish Queenstown

(\$NZD)  
**\$385**



## Back Paddock

**Recommended minimum travel time**

- 8 days
- Pass Guidelines**  
 Start Christchurch, finish Christchurch

(\$NZD)  
**\$469**



## Ghost Train Back Paddock

**Recommended minimum travel time**

- 8 days
- Pass Guidelines**  
 Start Christchurch, finish Christchurch

(\$NZD)  
**\$549**



## Southern Round-up

**Recommended minimum travel time**

- 10 days
- Pass Guidelines**  
 Start anywhere in the South Island, finish where you started

(\$NZD)  
**\$515**



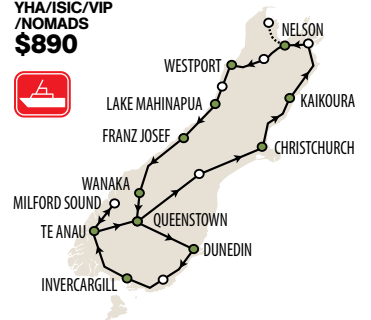
## Bottoms Up

**Recommended minimum travel time**

- 15 days
- Pass Guidelines**  
 Start anywhere in the South Island, finish where you started

(\$NZD)  
**STANDARD**  
**\$900**

**YHA/ISIC/VIP /NOMADS**  
**\$890**



NOTE: Recommended minimum travel times include more than one night in some destinations. You can change these to reduce trip duration.



## Kiwi Experience will give you the trip of a lifetime. So check out the detailed itinerary below-stop dreaming and get going!

### > NORTH ISLAND

#### **Auckland to Paihia (Bay of Islands)**

We arrive in the spectacular Bay of Islands at midday so you can explore the many options and activities Kiwi Experience has on offer. Take advantage of all the great discounts and allocations on popular activities through your Driver Guide. Check out the Treaty of Waitangi grounds, swim with dolphins, take a leisurely cruise in the Bay or jump in a faster boat for an adrenaline rush.

#### **Paihia to Cape Reinga return**

An action packed day up to the very top of New Zealand. This area is very sacred to the Maori people and is where you can actually see the Tasman Sea and Pacific Ocean meet. Sand boarding down the giant dunes, walk through the ancient kauri forests and drive at 90km per hour on 90 mile beach!

#### **Paihia (Bay of Islands) to Auckland**

Take part in any of the activities you haven't done yet, and head back mid afternoon to Auckland.

#### **Auckland to Mercury Bay**

Depart for the Coromandel Peninsula and spend the afternoon at Cathedral Cove, accessible only on foot or by kayak - a beautiful coastal spot, great for swimming, sea kayaking and spotting dolphins if you're lucky. Stay in Whitianga for the night - a great place to jump off and explore the rest of the Coromandel Peninsula.

#### **Mercury Bay to Rotorua**

Visit to the Karangahake Scenic Reserve to explore a native bush-clad gorge and swing bridges, before continuing on to Rotorua - the geothermal and cultural centre of New Zealand. We stop in at Tamaki Tours to experience a taste of Maori culture with 'Realm of Tane' - free with Kiwi Experience. Go luging, zorbing or take a dip in a natural hot spring before experiencing one of New Zealand's premier Maori Hangi and concert in the evening - a night not to be missed!

#### **Rotorua to Waitomo Caves**

Today we start with a visit to Te Puia, a large geothermal reserve and Maori Arts and Crafts Centre, before driving through to the Waitomo caves. The caves are made out of limestone, about 40 million years old. We spend the

afternoon checking out Ruakuri reserve and walkways. As always your Driver Guide will organise great discounts on a range of fantastic activities in Waitomo to do the following morning.

#### **Waitomo Caves to Taupo**

After a morning packed full of activities we head in the direction of the central plateau and major backpacker destination - Lake Taupo.

#### **Free Day Taupo**

Experience one of the many activities on offer in Taupo which includes skydiving, bungy jumping, fishing as well as New Zealand's most popular one day walk - The Tongariro Crossing.

If you have time, head off on 'East As' - our four day, three night unique trip around the East Cape which takes you to places few travellers get to see. Stay in small communities and experience Maori culture as a living reality.

#### **Taupo to River Valley**

We head south to the Tongariro National Park for a trek through native bush, waterfalls and braving the cool mountain streams of this alpine volcanic region. We travel through to one of New Zealand's only true adventure lodges - River Valley. This location offers some great activities including horse treks and whitewater rafting on the Rangitikei River.

#### **River Valley to Wellington**

We spend the afternoon heading south to the nation's capital, Wellington. Among other things, Wellington is home to the largest cultural attraction in New Zealand, Te Papa Museum which is well worth a look (and it's free).

### > SOUTH ISLAND

#### **Wellington to Nelson via the Cook Strait**

We take the Interislander ferry across to the South Island via the stunning Marlborough Sounds. In summer a swim at the Pelorus Bridge may be available before arriving into Nelson, the gateway city to the Abel Tasman National Park. As always, your Driver Guide can offer great trips and great discounts to get you up into the park.

#### **Nelson to Westport**

Head for the Nelson Lakes National Park for a walk in the forest and a visit to one of the more spectacular lakes in the area surrounded by beautiful snow-capped mountains. En-route to Westport we meet the crew who have travelled from Christchurch and will join us as we hit the West Coast. Stop in at Buller Adventure Tours to meet the team for jet boating, quad biking and rafting trips on or next to the mighty Buller River.

#### **Westport to Lake Mahinapua**

Highlights today include Cape Foulwind seal colony, rugged beach walks and the Punakaiki Pancake Rocks and Blowholes. Our destination for tonight is the famous Mahinapua Hotel where your Driver Guide will arrange a group meal for everyone before taking part in the legendary 'Poo Pub' party.

#### **Lake Mahinapua to Franz Josef**

Visit the Bushman's Centre to get an insight into how people did - and still do - make a living in the harsh environment of the West coast. Then it's through to the Franz Josef Glacier village, nestled in the Westland National Park. Your Driver Guide will take you up to the Glacier lookout for a taste of what you might be doing the next day.

#### **Free Day Franz Josef**

Today is your chance to hike on Franz Josef Glacier, a once in a lifetime experience. There is a massive range of activities to take part in, from half and full day glacier walks, to heli-hikes and skydiving.

#### **Franz Josef to Wanaka**

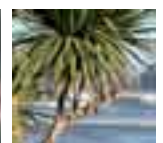
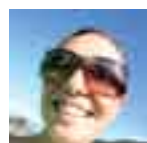
Start out early in order to catch the perfect mirror reflection of Mount Cook and the Southern Alps on Lake Matheson. The scenery changes dramatically as we cross into the lakes district of Otago and into our picturesque destination of Wanaka.

#### **Wanaka to Queenstown**

An action packed drive through to New Zealand's adventure capital, Queenstown. Highlights include Puzzling World and the Kawarau Bridge Bungy. Arriving in Queenstown your Driver Guide will give you an orientation, then tonight get ready to celebrate with new-found friends in the adventure and party capital that is Queenstown!

**Aotearoa** - New Zealand **Kapai** - good, expression of approval **Primo** - Fantastic, awesome, sounds great

**Jandals** - flip flops, rubber footwear **Dairy** - a corner store for all your pie needs **Tiki-tour** - to look around







# NO WORRIES!



## Translation

"Relax, you're on New Zealand time"

Flexible trips -  
Jump on, jump off

**09**

### Free Day(s) Queenstown

Queenstown is often rated as being a favourite destination to hang out in New Zealand so take the time to spend several days here. You can take advantage of the beautiful lake and surrounding walks, or get into a whole range of adrenaline pumping activities.

### Milford Sound

Travel through to Milford Sound checking out the most amazing scenery in NZ along the way. Highlights include the Homer tunnel, gigantic waterfalls, the boat cruise through the fiords and a visit to an underwater observatory.

### Queenstown to Christchurch

Head up over the Lindis Pass into the MacKenzie Country where you will experience a dramatic change in scenery. We travel through to Lake Pukaki and the Mount Cook lookout, before hitting the Canterbury Plains and arriving into the country's second biggest city, Christchurch, late afternoon.

### Christchurch to Westport (for those travelling on a Back Paddock, Dog Leg or Gumboot pass)

Head through the Southern Alps via the Lewis Pass. Experience some short walks and amazing scenery before you meet the large Kiwi Experience coach to start your awesome West Coast adventure!

### Christchurch to Greymouth (for those travelling on Ghost Train Back Paddock or Ghost Train Dog Leg)

The TranzAlpine scenic train journey from one coast of New Zealand to the other. See the fields of the Canterbury Plains, the spectacular gorges and river valleys of the Waimakariri River, and travel through the Southern Alps before descending through rain forest to Greymouth.

### Christchurch to Kaikoura

Spend the morning travelling north to the coastal town of Kaikoura. Kaikoura is known as the best coastal wildlife region in the world. The sperm whales, dolphins and seals in Kaikoura are becoming world renowned and a trip to experience what's on offer is a must. Your Driver Guide will be able to secure allocations and discounts on most activities even in peak season!

### Kaikoura to Picton/Wellington or Nelson

A spectacular drive following the coast north and taking in the last of the dramatic Kaikoura coastline - we may stop for a close look at the seals along the way. We make our way to

Picton, for northbound passengers to get the ferry, and southbound passengers to meet your Driver Guide.

## >NORTH AGAIN

### Wellington to Taupo

Depart Wellington early, passing through Taihape where we drop off and pick up people for River Valley transfers. Head up to the Central Plateau, home of the Tongariro National Park. For access to the National Park, we can drop you off in the township of Turangi.

Taupo is fast becoming known as the action adventure capital of the north. Experience one of the many activities on offer in Taupo including skydiving, bungy jumping, fishing and New Zealand's most popular one day walk - The Tongariro Crossing.

### Taupo to Auckland via Rotorua

Our first stop this morning is Rotorua. For those passengers travelling to Rotorua for the first time, you've got the option of many activities including the 'Realm of Tane' free inclusion with Kiwi Experience.

### Waitomo Day Trip

Heading north you have the option of travelling to Waitomo from Rotorua with our Waitomo Day Trip package, which includes Black Water Rafting.

## >EAST AS

Nau mai haere mai ki te tairarwhiti. Welcome to the East Coast THE CHILLED OUT place to be! This highly rated trip is not to be missed.

### Taupo to Te Kaha

Travel via Rotorua to Whakatane, where you can stay for a few nights to take a boat cruise out to Whakaari (White Island), New Zealand's most active volcano. From there it is a short trip up the coast to Opotiki and then on to Te Kaha where we spend our first night at Te Kaha Homestead Lodge. Relax in the hot tub overlooking the ocean and watch the sun disappear.

### Te Kaha to Rangitukia

We follow the coastline south to Rangitukia, checking out points of interest and taking in the beautiful coastal scenery. Arrive at Rangitukia with plenty of time to go on one of New Zealand's best horse treks or learn the art of bone carving.

### Rangitukia to Tatapouri

Get up early and follow a short track to be among the first in the world to see in the

new day, watching the sun rise over the horizon. Head down the coast to Tolaga Bay and New Zealand's longest wharf. Then onto Whangara, one of the most cultural and historically significant places on the East Coast and where the movie 'The Whale Rider' was filmed. Participate in a full tour of the marae by one of the local people and learn the history of this very special place.

Travel to Tatapouri where there is a huge range of activities you can choose from including rock sliding, surf lessons/ board hire, stingray feeding, and shark cage diving.

### Tatapouri to Taupo

On leaving Tatapouri, we take you to our hot springs in Kawerau for a well-deserved soak. Used by the local Maori for hundreds of years for their healing properties, these springs are sure to mend whatever ails you, before completing the trip in Rotorua or Taupo.

## >BOTTOM BUS

### Queenstown to Dunedin

We head off to NZ's most vibrant student city - Dunedin (via the massive Clyde dam) to check out the Speights Brewery, Cadbury chocolate factory and the steepest street in the world!

### Dunedin to Invercargill

The Catlins is probably as far south as you may ever go. Travel through awesome native forest, sandy beaches and see rare wildlife. Waterfalls, a 180 million year-old fossilised forest and the odd lighthouse round out the day before bunking down in Invercargill...

### Optional day trip: Stewart Island

Hanging off the bottom of NZ just a short jump away is Stewart Island. Scheduled ferry and flights every day to visit this southern jewel full of serenity, wildlife, tramping fishing and much more.

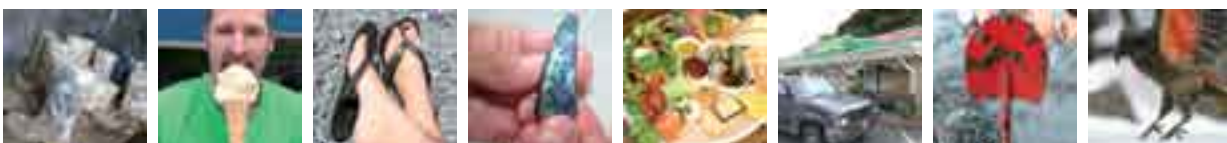
### Invercargill to Te Anau

Discover the art of Paua shell jewellery making at Riverton, and check out the infamous MacCracken's Rest! A stunningly beautiful day again, finishing in Te Anau.

### Te Anau to Milford Sound to Queenstown (on the Kiwi Experience Milford Explorer)

Travel through to Milford Sound checking out the most amazing scenery in NZ along the way. Highlights include the Homer tunnel, gigantic waterfalls and the boat cruise through the fiords. Options to jump off in Milford for kayaking and walking or maybe take a flight back to Queenstown.

**Tahi, rua, toru, wha** - one, two, three, four    **Stoked** - very happy    **No worries** - relax, no problem  
**Kai** - food, a meal    **Whanau** - family    **Sweet as** - ok, great, chill out    **Kia Ora** - hello, hi, thanks



**KIWI SPEAK**

**NEED MORE INFO? [www.kiwiexperience.com](http://www.kiwiexperience.com)**



# FREQUENTLY ASKED QUESTIONS

10

Do it your way



## ➤ What's included when I buy my pass?

Coach transport, services of your Driver Guide including commentary, accommodation and activity bookings. Your trip includes visiting heaps of places that would cost you extra if you travelled on an express service. You'll have access to some of the best experiences and memories of your life.

You pay separately for accommodation as you travel but this can be booked en route by your Driver Guide. Ferry crossings between the North and South Island, meals and optional activities are not included in your pass price.

## ➤ Will there be a seat for me?

If you confirm 24 hours before departure you have the best chance of being guaranteed a seat. You can book anytime but the more notice then the better chance you have of getting your seat guaranteed. In peak seasons it pays to plan a little bit ahead, because everyone wants to travel with Kiwi Experience in summer!

## ➤ Can I change my departure dates?

You can change your departure dates as often as you like! To change your departure date just contact the Kiwi Experience office by phoning (09) 366 9830, faxing (09) 366 1374 or emailing [enquiries@kiwiex.co.nz](mailto:enquiries@kiwiex.co.nz).

## ➤ How long can I travel for?

Your pass is valid for twelve months from when you first start travelling with Kiwi. You have up to 12 months to start your pass from the date you purchased it. Each section of a pass can only be travelled once. The exception to this is with our Kea and Top Dog pass as they travel Christchurch to Kaikoura twice.

## ➤ What should I bring?

Sunscreen (SPF30), insect repellent, water, credit card, walking shoes, swimwear, towel, clothes, and camera. Make sure you have seasonal clothing and even though most hostels provide bedding, a sleeping bag always comes in handy. If you have large items such as surfboards or mountain bikes, please let us know when you are booking so that the Driver Guide can make room on the bus.

## ➤ How much money do I need?

You can estimate \$20 to \$27 per day for hostel accommodation, a minimum of \$10 to \$25 a day for food and beverage, and the activity options are almost endless. We suggest you do a little independent research with a Lonely Planet-type of guide book for further estimates.

## ➤ Do I need to book activities before I start my trip?

Your Driver Guide can book and arrange activities as you travel. When you book through Kiwi Experience, you will get a discount on most activities saving you a lot of well earned money.

## ➤ What sort of accommodation is used?

We usually stay in backpacker hostels in the main overnight stops, but we also stay in an old west coast pub, on an outback farm and at an adventure lodge in the middle of nowhere. Most rooms are quad share and most places have the option of a twin or double room for a bit of extra privacy.

## ➤ What age limits are there?

Kiwi Experience recommends a minimum age of 18 years. If you are younger than this and travelling with a guardian, please contact reservations and we will do our best to get you on board.

## ➤ What if I'm travelling on my own?

The majority of our travellers are travelling solo and you already have something in common to start a conversation... you're both travellers, not just tourists! You'll meet all sorts of people from all over the world and quite a few locals too. We've had people start off as strangers and become lifelong friends forever.

# WE HAVE NEW ZEALAND'S TOP DRIVER GUIDES. THEY CAN HELP YOU ARRANGE YOUR ACCOMMODATION, ORGANISE ACTIVITIES, AND WILL PROVIDE ENTERTAINING AND INFORMATIVE COMMENTARY AS WELL.



**Flea** > Lady Felicity has done it all and continues to love what she does - showing our fantastic country to travellers from all over the globe. Flea is also a keen photographer and many of the Kiwi Experience images you see are Flea's artistic talents shining through!



**Dan** > Sharing his Kiwiana knowledge with our passengers, with Dan at the wheel everything's "cool, cool, cool...". Dan is proud of his Maori heritage, and is a cruisy character who loves a good laugh. Whether you are in NZ for a short or long time, Dan will make sure that no matter what, it's always a good time.



**Damian** > After many years in the UK and USA, Damian has found life on the road to be everything and more since joining the Kiwi Experience whanau in 2004. He is the all round "Mr Nice Guy", and creates a fantastic group experience for all to enjoy!



**Ruby** > Ruby is often seen in the office and gets out on the road every now and then to meet passengers. If you see her on your trip, take the time to throw a ball around, she'll love you for it!



**Ginny** > Ginny started in our sales team, but soon decided that instead of promoting our product she wanted to be out there living and breathing it with our passengers and is now one of the wahine (female) Driver Guides we have on the road.



**Cheese** > Cheese graduated from our extensive Driver Guide training trip last year, and he has always got a smile on his face (and flames in his hair!). A genuine Kiwi bloke from our most southern city, Invercargill.



**Marama** > A walking talking history book. Some of those stories you hear him tell are actually about his relatives! Marama is one of the crew who has come back to the Kiwi Experience whanau because he missed us so much!



**Matty** > The newbie (and one of the good looking ones of the bunch) Matty is a very friendly Northlander who will do his best to give you an awesome time in New Zealand.



## Terms and conditions for travel with Kiwi Experience

1. Kiwi Experience travel passes, issued for a specific travel sector, are valid for travel in one direction over the sector which the pass name refers to from the first date of travel for up to a 12 month period; or until the pass holder has travelled once over all sections of the travel pass, within the 12 month period. 2. First day of travel must commence within 12 months of the date of agency voucher issue. 3. Travel agent vouchers or Kiwi Experience website E-Tickets must be exchanged for the appropriate Kiwi Experience ticket before the holder is able to get on a Kiwi Experience service. 4. Expired passes can be extended for a further period for a fee of NZD\$50 per 3 month period of extension. Extension of pass validity must be requested prior to expiry date. 5. Kiwi Experience assumes no responsibility for lost or stolen tickets. Upon proof of purchase, a replacement ticket will be issued by Kiwi Experience's office or driver guides only, and a NZD\$25.00 re-issue fee will apply. 6. Kiwi Experience passes are non-refundable and non-transferable. 7. Cancellation policy for travel agent vouchers and bookings: \$100 (currency of original booking). Where the value of the ticket is less than \$100 (currency of original booking) the cancellation fee is equivalent to the cost of the ticket. 8. Travel reservations are required and should be made in advance of departure to help assure a seat. To help ensure your seat please confirm at least 48 hours before departure. Changes of confirmation travel dates must be made at least 24 hours prior to departure changes by contacting our reservations department: +64 (9) 366 9830 or enquiries@kiwiex.co.nz. 9. NO SHOWS NEW ZEALAND: Should a passenger fail to show for a booked and confirmed departure from any point the passengers ticket will become void until a NZD\$50.00 penalty is paid to reinstate the validity of the ticket. 10. All fares, routes, inclusions and departure times are subject to alterations without notice. Kiwi Experience reserves the right to substitute other vehicles in place of their own in circumstances beyond their control. 11. Kiwi Experience will endeavour to adhere to stated departure and arrival times but will not be liable for any failure to meet those times or cancellations due to weather or any other conditions. 12. Kiwi Experience shall not be liable for any loss or damage arising out of or consequential upon, directly or indirectly, an abandonment of, delay in departure or delay during any trip however caused. 13. Kiwi Experience is not a common carrier and reserves the right to refuse to carry any passenger, luggage or goods without giving any reason. 14. Kiwi Experience will not be liable for the sickness, injury or death to any of our passengers, loss of or damage to any personal effects, whether caused by Kiwi Experiences negligence or otherwise, and the purchase of this ticket and passenger jointly and severally agree to indemnify Kiwi Experience against liability to any person on whose behalf such travel was booked or such ticket was purchased. 15. Where the services of another operator are provided for in this ticket it is agreed and understood that Kiwi Experience is acting only as an agent for the passenger to arrange such services and accepts no responsibility whatsoever for any default of that operator. 16. Child fares for coach tickets under 15 years old, 50% of the full rate for Kiwi Kiwi Experience. Passengers under 18 years must travel with their legal parent(s), spouse or guardian. There must be at least 1 adult per 2 under 18 year olds travelling. Identification may be requested. 17. Kiwi Experience will not use any customer information for direct marketing purposes without your consent. 18. A full list of terms and conditions are available on request contact: enquiries@kiwiex.co.nz or visit our website www.kiwiexperience.com

Get Amongst It



NEED MORE INFO? [www.kiwiexperience.com](http://www.kiwiexperience.com)



**GET AMONGST IT!**



**Translation**

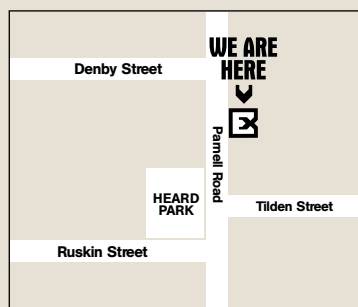
"Experience the REAL New Zealand!"



**KIWI**  **PERIENCE**

Contact us (and our partner in Fiji)

**KIWI** 



**kiwiexperience.com**

195-197 Parnell Rd, Auckland  
NEW ZEALAND

PH: (+64) 9 366 9830  
FAX: (+64) 9 366 1374  
enquiries@kiwiex.co.nz

NEED MORE INFO?

[www.kiwiexperience.com](http://www.kiwiexperience.com)



**> DETAILED PASS DESCRIPTIONS**

Find out just where your pass will take you.

**> BOOK ONLINE**

Live booking system - your booking is confirmed when you make it.

**FEEJEE** 



**feejeeexperience.com**

Aerotown Mall, PO Box 9612,  
Nadi Airport, FIJI

PH: (+679) 672 3311  
or (+679) 672 5950  
FAX: (+679) 672 0097

enquiries@feejeeexperience.com

**> Discover the real Fiji - Adventure, Culture, sun and sand. Sandboard, trek 3 hours into Viti Levu highlands, tube and travel by longboat, swim at secluded waterfalls, barter with locals, kayak, visit Fijian villages and schools, partake in a kava ceremony, bathe in hotpools, explore and snorkel around the secluded beaches...and much more!**

**Your Agent**

Prices are valid 1st October 2007 to 31st March 2008. Refer to Terms & Conditions (page 11)