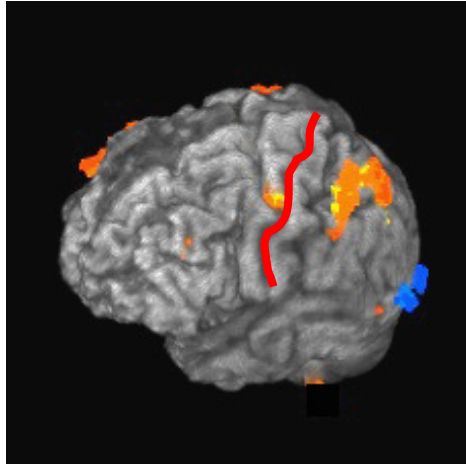


Chromium Picolinate Treated Subject

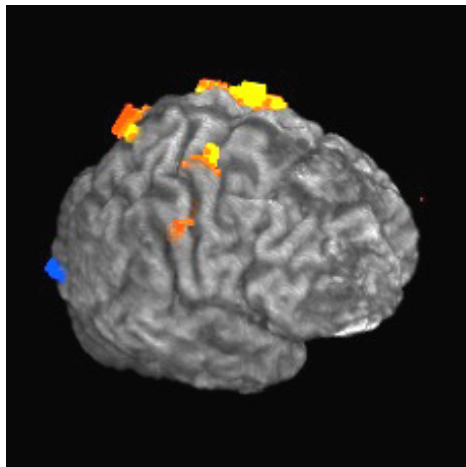
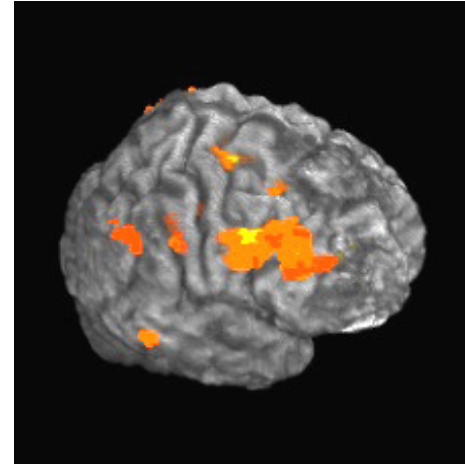
Baseline Scan



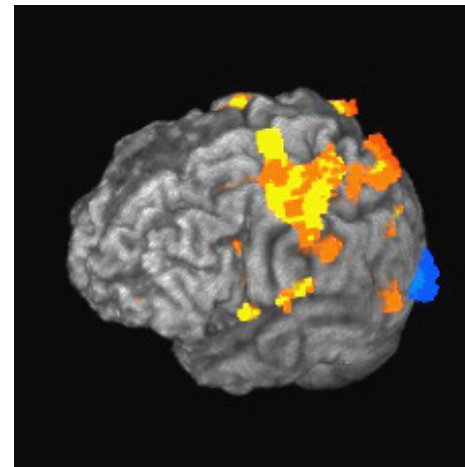
Lateral view of:

Left Hemisphere

Post-treatment Scan



Right Hemisphere



Brain regions in orange show increasing activation as memory load increases (i.e., goes from 0-back to 1-back, to 2-back task). Regions in blue show decreasing activation with increasing load. Two patterns emerge in the post-treatment scan. First, left hemisphere activation specifically related to task performance in frontal motor cortex and parietal lobe expands. Second, nonspecific right hemisphere frontal activation is reduced. Central sulcus, drawn in red separates left frontal motor cortex from left parietal lobe. Subject 003, visits 1 and 2