



DAYBREAK

eCAPTURE FOR EMC DOCUMENTUM

A Daybreak ICS Software Solution

Distributed Document Capture for EMC Documentum

Coming Soon for IBM Content Manager
and FileNet, and Microsoft Sharepoint

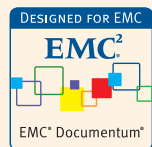


eCapture Suite

eCapture for EMC Documentum is part of the eCapture Suite (e4x) of products.

eCapture for EMC Documentum Features

- Designed for EMC Documentum accredited
- Quick, easy installation and simple operation
- Concurrent licensing model and no page count costs
- Scan to searchable PDF on the fly
- Scan offline and upload later
- Secure communications to protect your assets
- Automatic capture of user/file metadata
- Zonal OCR
- Configurable scanning profiles for multiple document types
- Built for services-oriented architecture (SOA)



What It Is

eCapture for EMC Documentum is a distributed document capture application that enables users in disparate environments to scan documents directly to selected EMC Documentum content repositories in one step, from a single interface. With eCapture for EMC Documentum, Daybreak introduces a fresh new concept in distributed document capture for Documentum users, including cost-effective concurrent licensing and no per click charges or page counts.

The Right Solution

eCapture Suite is the right solution for an organization if they:

- Need to capture paper documents from multiple locations
- Want to reduce costs associated with manual metadata entry
- Have a requirement to streamline and expedite the processes of converting paper content into digital assets for integration into core Documentum or eRoom
- Need a method to easily route content to multiple content repositories
- Desire a simplified interface, core capture features, and cost-effective solutions

**Welcome
to the
new world
of ECM.**

Modular Design

eCapture for EMC Documentum is built on a modular platform that consists of the core capture engine and Documentum plug-in. A plug-in is also available for EMC Documentum eRoom, making it easy to scan, index, and route paper documents into either application from a single interface. The software provides security features including secure communications, user authentication and access control to content repositories. eCapture for EMC Documentum is built from the ground up for Services-Oriented Architecture (SOA) to facilitate interoperability with legacy systems within an organization.

Ease of Use

eCapture for EMC Documentum connects to the Documentum Content Server, enabling real-time communication with the server and eCapture desktop client. Users have the ability to route documents into multiple docbases and can also capture and assign document attributes. For easy full-text indexing and retrieval, users can scan to searchable PDF on the fly and automatically capture metadata through the application's zonal OCR functionality.

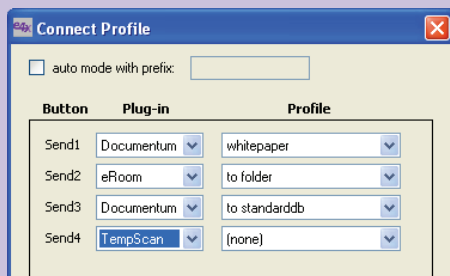
**eCapture for
EMC Documentum is
Unlocking the Value.**

Contact Daybreak at 802-264-4000
or info@daybreakICS.com. Visit
www.daybreakICS.com for more info.

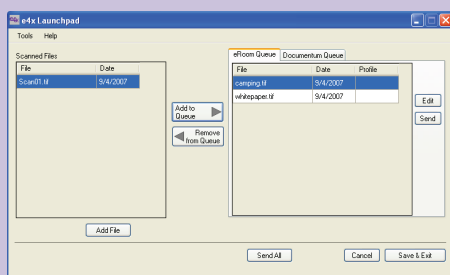
Daybreak ICS provides a full suite of enterprise content management (ECM) products and services in the create/capture, manage, deliver, and archive spaces. Daybreak provides collaborative software tools that function across multiple ECM platforms. Founded in 2002, we offer implementation of customized solutions and cohesive training across your business environment. Whether you need more from your existing system or are planning a new system, we can help you integrate the powers of process plus technology to achieve the desired result. Daybreak is committed to your success.



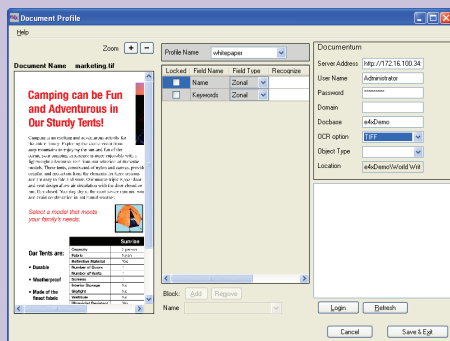
How It Works



Set up and configure your scanner launch buttons.



Scan your documents to the e4x LaunchPad for zonal OCR/ searchable PDF capture.



Attach the document profile to automatically capture metadata for easy search and retrieval.

From the LaunchPad, select your repository and click Send. You're done.

Requirements

EMC Documentum Server Requirements

The Documentum 5/6 plug-in uses the new Documentum Foundation Services (DFS) platform and requires a DFS-capable system. The DFS requires a Java application server, such as

- BEA Weblogic
- Apache Tomcat 5.5
- Sun Java Application Server
- IBM WebSphere

Client Requirements

The e4x client was designed to operate on common Windows-based workstations.

- Windows 2000
- Windows XP (Pro or Home)

Unlocking The ValueSM

Daybreak ICS bridges the divide between business needs and technology by tapping the underutilized value inherent in an enterprise's content management solution. Through consultancy and training, Daybreak offers a unique approach to solving business challenges.

The Winning Combination

Daybreak ICS

Working in alliance with industry leaders such as EMC Documentum, PTC Arbortext, CYA, IBM, AIIM, and other professional organizations, Daybreak is delivering new competencies in enterprise content management.

You

Your business solution launched with the keys to success: tool AND process understanding with the confidence and enthusiasm for successful project implementation, systems leverage, and ROI.

Software that Sizzles

Daybreak software solutions focus on usability and solving real business problems. Both eCapture for eRoom and eCapture Suite are distributed capture applications that enable users to scan documents directly to a selected location with the touch of a single button.

Contact Daybreak at 802-264-4000 or info@daybreakICS.com. Visit www.daybreakICS.com for more info.