

SafeCopy 2.0 enables the user to make forensically sound copies of files located on any drive—either local or networked. **SafeCopy 2.0** features:

► **High Speed Copying**

SafeCopy 2.0 has a unique bitstream copy engine that creates copies of files and directories that not only retain the file contents, but also retain the file timestamps and original metadata ensuring the proper chain of custody. This is all done 4-5 times faster than Robocopy. As the collections get larger, so does the time savings.

► **Choice of Copy Engines**

On occasion, there will be the need for the selectable options available in Robocopy. **SafeCopy 2.0** offers the choice for which engine to use when making copies of files and directories.

► **Multiple Directory Selection**

SafeCopy 2.0 allows users to select multiple directories for copying. The easy-to-use interface allows for easy directory selection from within a familiar directory tree structure, or just drag and drop the files to be copied from the Windows Explorer interface.

► **File Hashing**

When copying files, **SafeCopy 2.0** retains the crucial metadata. To ensure the copies made with SafeCopy are identical to the originals, the user can calculate the MD5 hash values of the source files and destination files.

► **Generation of Chain of Custody File**

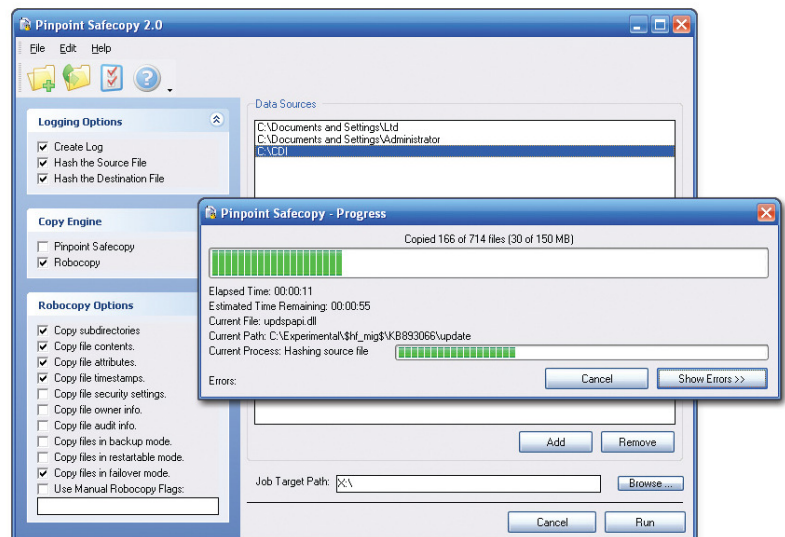
SafeCopy 2.0 provides a chain of custody log file which proves that the copies made are forensically sound. This log file contains important information such as the date and time the copies were made and the MD5 hash values calculated in the source and destination files.

► **Error Reporting**

If a file is copied and the source hash value does not match the destination hash value, an error is reported instantly in the progress window and added to the error log. Once the copy process is completed, **SafeCopy 2.0** generates a detailed log file for easy review.

► **Resuming**

If you experience an unexpected system crash or power outage during the copy process, no need to worry. **SafeCopy 2.0** automatically saves all settings and the job progress in a job profile allowing users to easily resume incomplete copy jobs.



► Mobile Edition - U3 Version

Now available, **SafeCopy 2.0 Mobile Edition** allows you to perform data collections on any PC where you can plug in a U3 USB device. Utilizing the U3 platform for portability and security, **SafeCopy 2.0** will run from U3 compatible flash drives, also known as "U3 Smart Drives," eliminating the need to install the software on servers or client machines. Without the need to install on the host machine, **SafeCopy 2.0 Mobile Edition** leaves no "footprint". Now you can take all the features and functionality of **SafeCopy 2.0** wherever you go.

► What is U3?

U3 is a standalone application environment that allows users to install and run software directly from a USB device. **SafeCopy 2.0 Mobile Edition** is perfect for file collection, acquisition or even in-house use when you need the freedom to use **SafeCopy 2.0** wherever you choose.

Running **SafeCopy 2.0 Mobile Edition** is as simple as clicking the U3 icon in the system tray, or if you have Autorun disabled, you can access the U3 menu by running the "LaunchU3.exe" executable. Located in the CD Partition of the U3 Smart Drive, there will also be a second partition which houses the data contained on the U3 Smart Drive.

Feature Comparison

Feature	Robocopy	SafeCopy 2 Mobile
Supports Robocopy Flags	✓	✓
Robocopy GUI		✓
Portable between computers		✓
Choice of copy engines		✓
Drag & Drop Folder Selection		✓
Multiple directories and data sources		✓
Conflict checking		✓
Verification Log (Chain of Custody)		✓
Real-time error tracking		✓
100% file copy verification		✓
Dual MD5 hash check		✓
Captures file system metadata		✓
Detailed error log		✓
Job profile		✓
Resume aborted or cancelled jobs		✓