



DESKTOPS



NOTEBOOKS



SERVERS



TABLETS



 **SenecaData**
The Leader in Custom System Innovation

Finding the pain. Delivering the solution.



The Problem:

- Small and Mid Size Businesses (10-100 end users) rely on technology to stay competitive and productive
- But pain can arise from:
 - Manageability issues
 - Increased IT costs
 - Limited resources
 - Technology obsolescence

The Solution:

Nexlink StableFlex Modular Server built on Intel® Multi-Flex Technology



What is the Nexlink StableFlex Modular Server?



The Nexlink Modular Server built on Intel® Multi-Flex Technology is:

Reliable. With **fewer points of failure** and higher quality components than most servers

Manageable. Providing built in remote end-to-end management via Web-based interface

An exceptional value.
Lower your costs with a server designed to fit your budget with many high-end features accessible to your business



What is the Nexlink StableFlex Modular Server?



With the Nexlink StableFlex Modular Server, your business can achieve:

Increased uptime with redundant systems, automatic failover, and backup

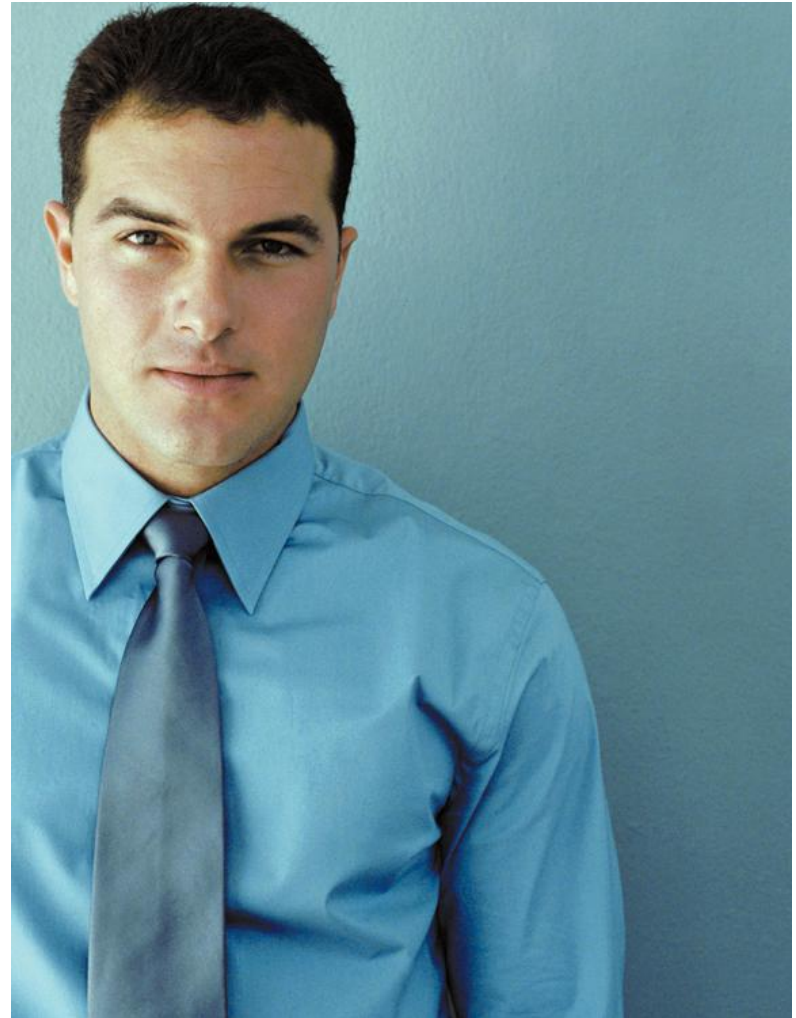
Grow-as-you-go flexibility with 1-6 server compute modules and up to 14 storage drives

Greater utilization with shared storage and virtual drives for maximum use of system assets

Unique serviceability with just one simplified and integrated system with all hot-swappable components

End-to-end management for the entire system from one simple web-based GUI interface

Improved data protection with centralized back-up and virtualized access for greater data protection



What is the Nexlink StableFlex Modular Server?



With the Nexlink StableFlex Modular Server, your business can enjoy a robust and feature-rich experience:

Plug and play so you can manage systems swiftly and efficiently

It's all in one box so IT administrators can manage everything from one location

Lower out of pocket costs by purchasing one single robust server system

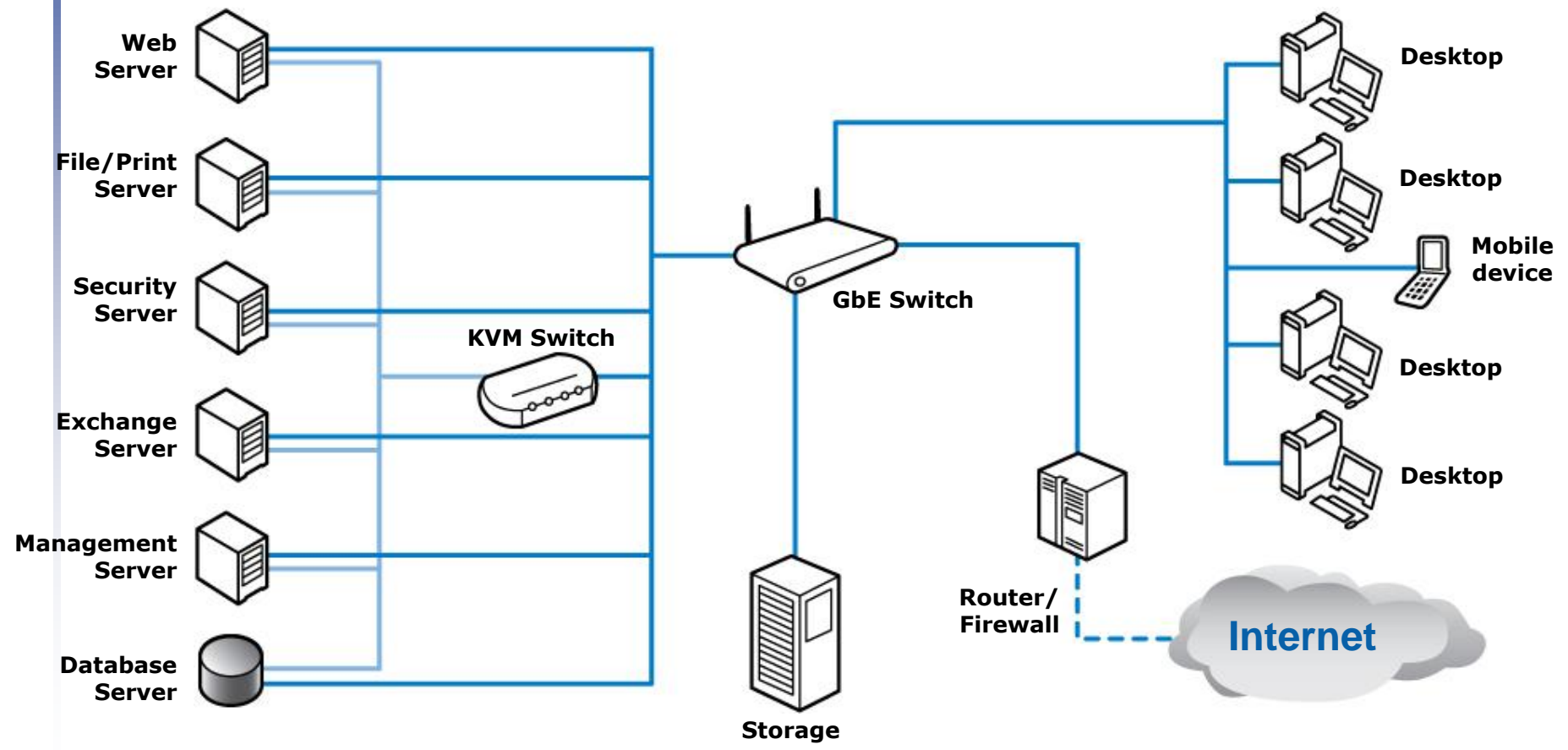
Lower energy costs by as much as 20-30 percent with energy-efficient technologies built in—without compromise to performance

Enterprise-class capabilities now available to small- and medium-sized business (SMBs) without the cost or complexity

It's a business in a box.



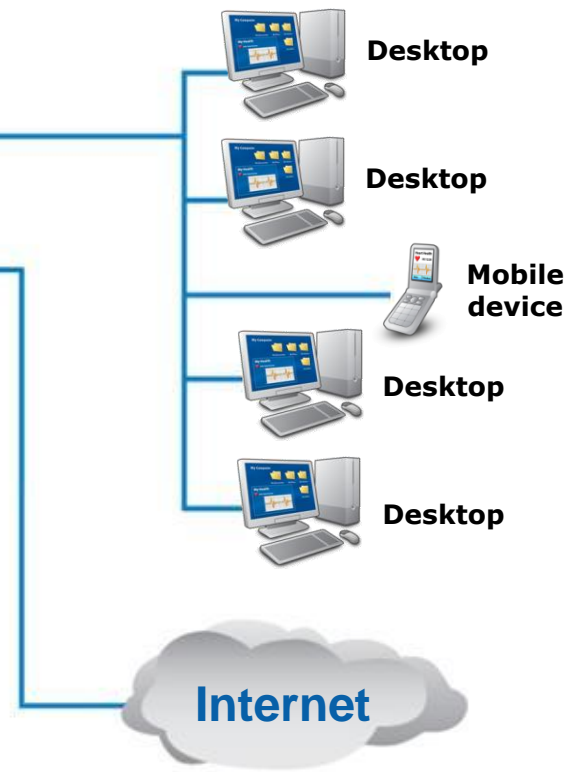
Imagine taking your customers from this:



It's a business in a box.



To this:



Nexlink StableFlex Modular Server built on Intel® Multi-Flex Technology:

**More features. One box.
Manageability. Agility. Scalability.
And benefits you can measure!**

Why choose higher cost systems that are difficult to manage and expensive to maintain...

When you can choose the Nexlink Modular Server

Traditional Server

3 RAID HBAs + BBU



Server



Server



Server



9 HDDs



GbE Switch



VS.

Nexlink Modular Server



Configuration:

- 3 Servers
- 1 GbE Switch
- 1 Storage Controller
- 1 Mgmt. Module
- 4 HDDs

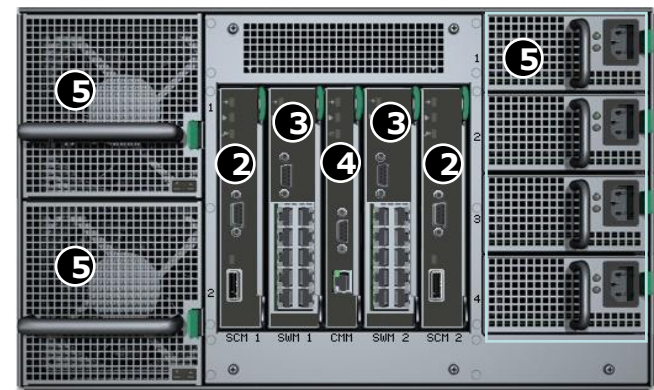
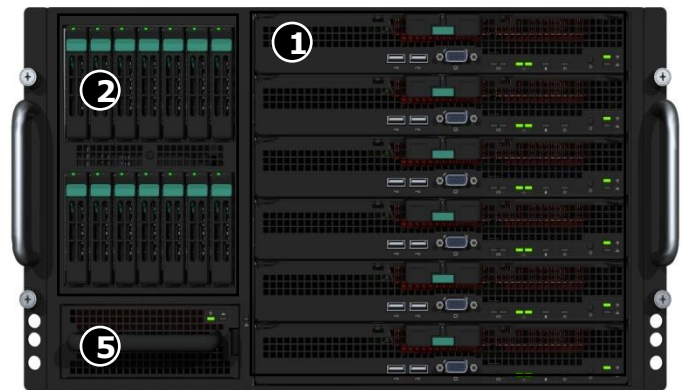
Additional capabilities included:

1. Virtual Presence GUI
2. Ease of Use Mgmt. Features
3. Remote OOB mgmt.
4. Virtualized Access Storage
5. Shared storage
6. Server fail over

It's a business in a box.



The Nexlink StableFlex Modular Server built on Intel® Multi-Flex Technology is designed from the ground up to fit the needs of Small and Medium Business.



1 Support for up to 6 full performance DP multi-core Intel® Xeon® servers, rack install or pedestal kit

2 Virtual shared storage

- Storage shared by all Servers
- 14 x 2.5" hot swap hard disk drives
- Dual redundant Controllers

3 Integrated networking

- 10 1 Gb Ethernet Switch uplinks
- Dual redundant switches

4 Ease of use hardware management

- Web GUI
- End-to-end management
- Remote management
- KVM over IP, virtual media

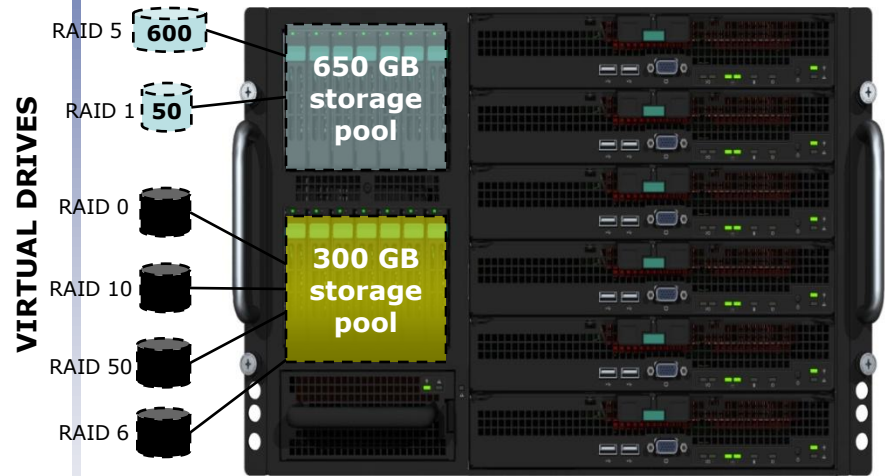
5 Full redundancy & hot swap

- N + 1 power supply with 100 - 240V option
- Dual redundant fans

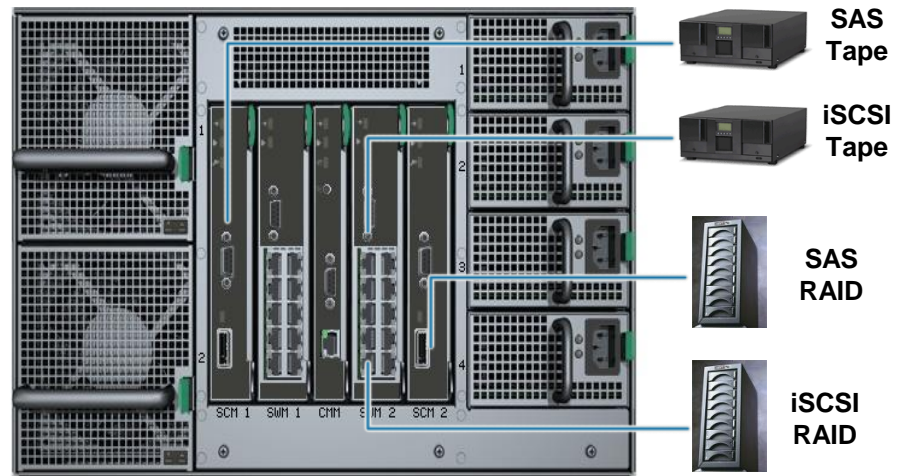
It's a business in a box.



Plus, consolidated storage reduces hardware costs and provides maximum flexibility.



- Consolidated storage reduces hard disk drives cost, count and flexibility**
- No drives on the server
 - Storage shared all servers using virtual drives
 - Hardware RAID 0, 1, 5, 6, 10, 50



- Flexible storage expansion:**
- External SAS or iSCSI arrays
 - Support access to SAS or iSCSI tape drives

End-to-End Remote Management



With Nexlink Modular Servers built on Intel® Multi-Flex Technology, businesses can point, click, and manage virtually.



Management Features

- Unified console for end-to-end health monitoring and management
- Remote media
- Remote power on/off/reset
- KVM over IP (Out of Band)
- Concurrent KVM (6 sessions at one time)
- Event notification
- CLI, SNMP
- System Logs
- Environmental monitoring and control

With Virtual Presence, you empower IT to work more efficiently.

End-to-End Remote Management



Adding Hard Disk Drives is as simple as point and click.

The screenshot displays the Intel Multi-Flex Server Control interface. The main window shows a server rack with storage drives and three storage pools: Test 1 (67 GB), Test 2 (67 GB), and Test 3 (33 GB). A 'Create Storage Pool' dialog box is open, showing a drive array and RAID level options (0, 1, 5, 6, 10, 50). A 'Test 1 Actions' menu is also visible.

Test 1 Actions

- Create Storage Pool
- Rename
- Delete
- Identify
- Create Virtual Drive
- Expand Storage Pool

Drive Array Help

When there are multiple drive arrays, bring others into view the scrollbar to the left.

Create Storage Pool

Name:

Physical Size: 0 GB

Available RAID Levels:

[Learn more about RAID levels](#)

Apply Cancel

Storage Pool Properties Table

Property	Value
Array Id	CC46230000000000
Name	Test 1
Status	
Total Managed Space	
Total Unallocated Space	
Max Contiguous Space	
Number Of Physical Drives	
Number of Logical Drives	

©2006 Intel Corporation

Example: Storage pools with virtual drives

You can create a storage pool as easy as point and click.

With Virtual Presence, businesses can see all system components and control them remotely via the GUI as if they were standing in front of it.

Smart features. Smarter business.



Feature	Business value
A business in a box	The Nexlink StableFlex Modular Server built on Intel® Multi-Flex Technology is one system that integrates storage, computing, and networking to simplify the demands of your business.
Integrated Storage	The storage drives are located separate from the servers allowing for the creation of storage pools and virtual drives. This gives the ability to only use the amount of storage per server that is needed.
Virtualized Access Storage	With Virtualized Access Storage, a virtual drive is mapped to the server slot and not the server itself. If the server goes down and is replaced, the storage is automatically connected to the new Server Module, simplifying maintenance and setup.
Remote Keyboard, Video, and Mouse (KVM)	The Remote KVM feature allows for an administrator to log in and use the remote client system as if they were physically plugged into the Server. This feature allows for Virtual Presence Management with the management interface.
Virtual Presence	Virtual Presence is where you can interact with and manage the system as if you are physically there through the web-based GUI Management Interface.
Future-ready	The Modular Server Chassis is designed to support multiple generations of Server Computer Modules. This allows for upgrades to servers without upgrading the chassis, increasing longevity.
No rewiring	Chassis power supplies can utilize 100-240V power, eliminating special power requirements worldwide.
No tools required	Anyone can service this system with all hot-swap components and no tools required.

The Nexlink StableFlex Modular Server gives your business the power to perform more efficiently and more effectively than ever before.

The Nexlink StableFlex Modular Server provides:

- Increased Network Uptime
- Greater Asset Utilization
- End-to-End Management
- Grow-as-You-Grow Flexibility
- Unique Serviceability
- Improved Data Protection

The right decision for your business.



NEXlink[®]