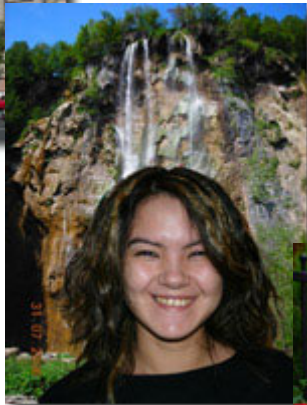


Cut out a human figure from a photo

Cut out a human figure from a photo

This example has been created in **Adobe Photoshop**, but you can use any other photo editor **compatible with AKVIS SmartMask**.



Different background images



An original image

Cut out a human figure from a photo

1. Open an image in your photo editor. (Fig.1).
2. Copy the image to a new layer (Duplicate Layer) (Fig.2).

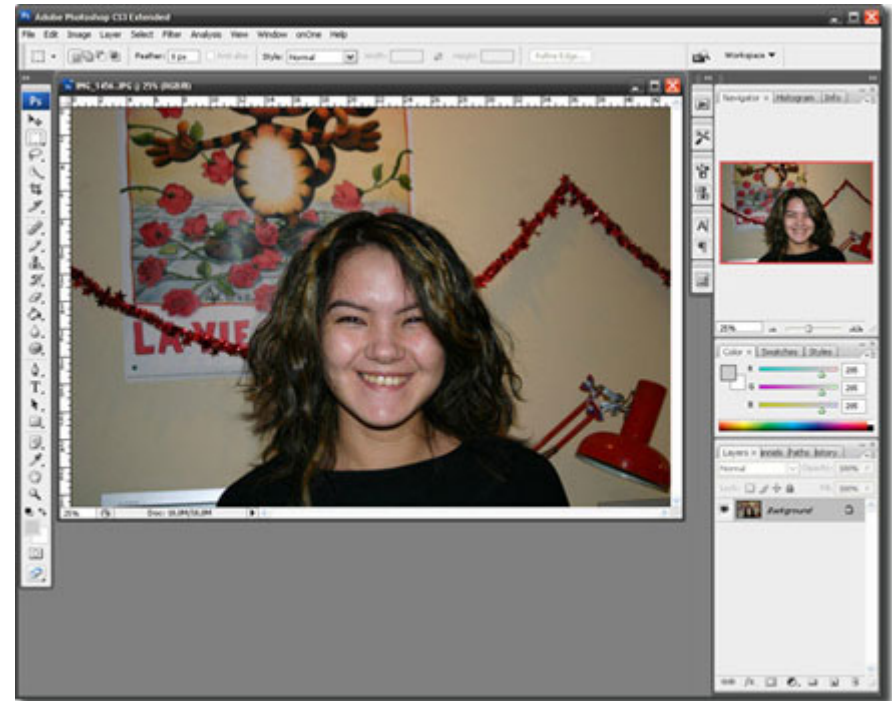


Fig.1.

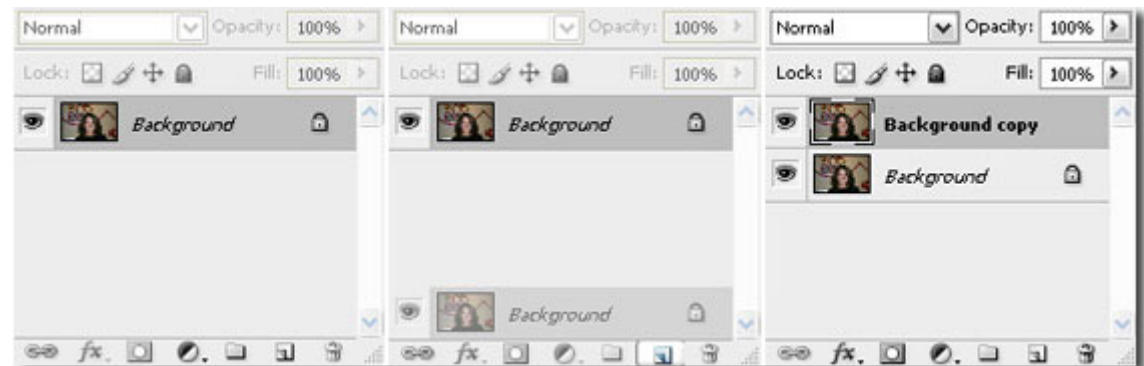


Fig.2.

Cut out a human figure from a photo

3. **AKVIS SmartMask** plugin. For this purpose select the command **Filters -> AKVIS -> SmartMask**. (Fig.3). By default the plugin uses the **Sharp** mode.
4. Use the blue pencil to draw an outline within the girl's figure (Fig.4). Use the red pencil to outline the background (Fig.5).

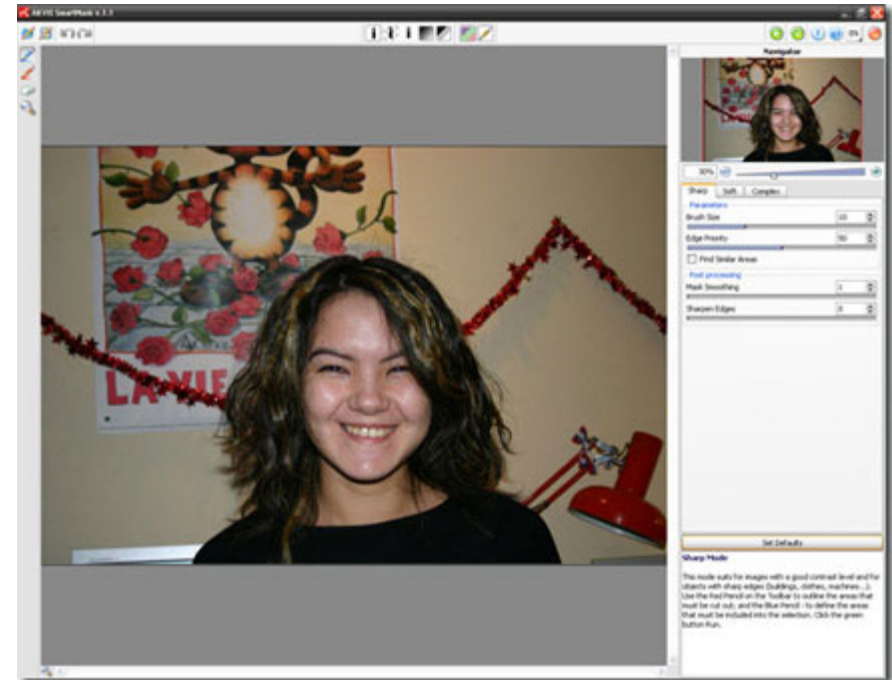


Fig.3.

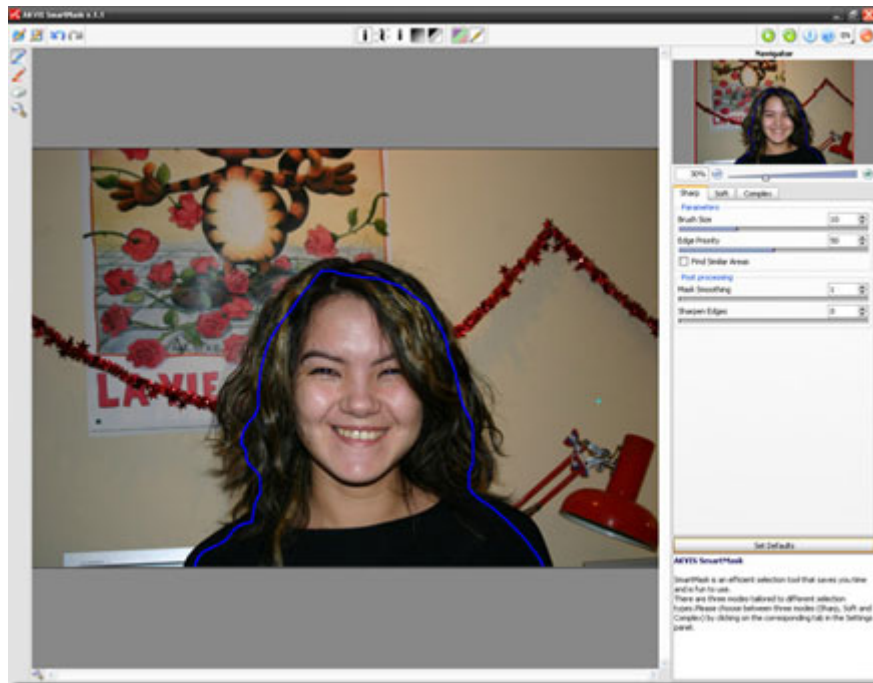


Fig.4.

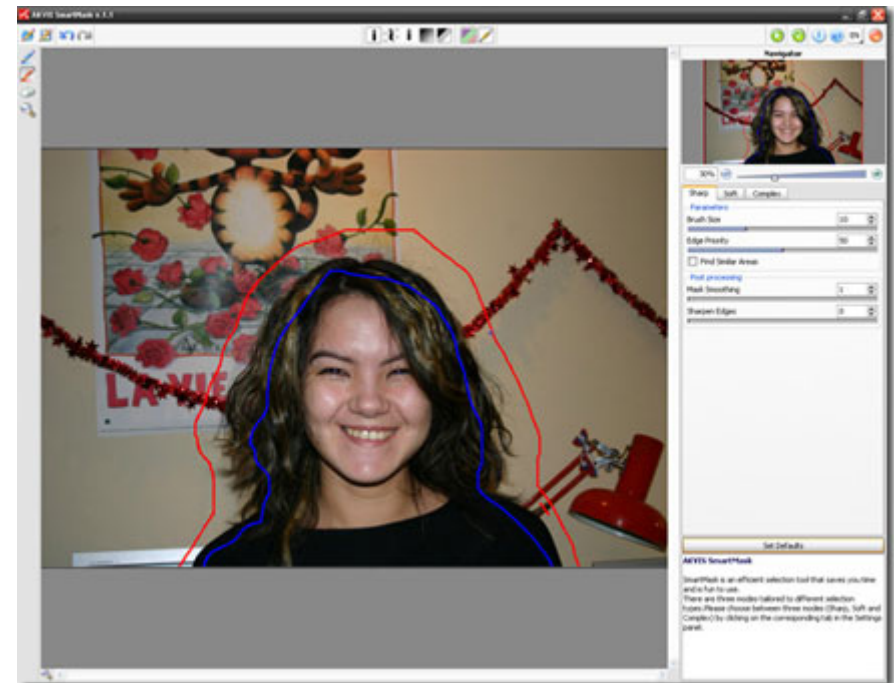



Fig.5.

Cut out a human figure from a photo

5. Press the button  to start processing the image (Fig.6).

The image will be processed with the default settings. The program will take into consideration the drawn outlines and generate three zone types: the red area will be deleted (the points in this area have Transparency = 100%), the areas that will be kept are marked blue - (the points in his area have Transparency = 0%). Red and blue areas will have a green transition border. The points in the green border have different Transparency values (between 0 and 100%), which accounts for the smooth edges of the selected (cutout) object. (Fig.7).

6. Let's see the result on a transparent background. Turn off the drawn strokes. (Fig.8).

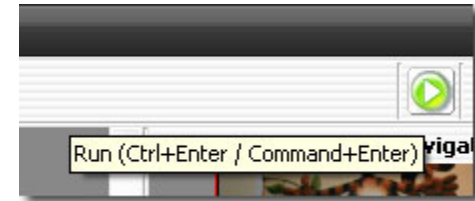


Fig.6.

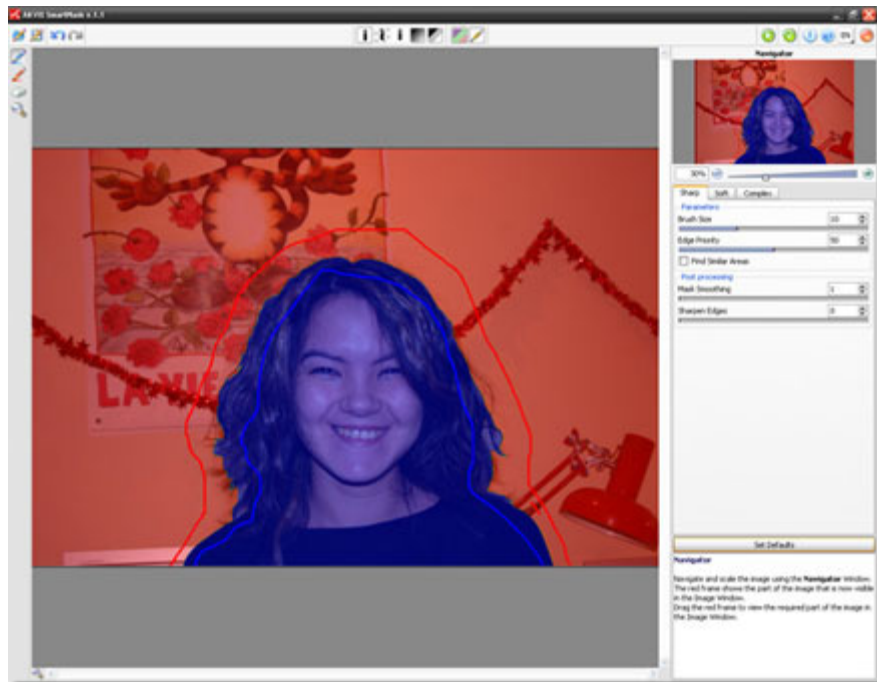


Fig.7.

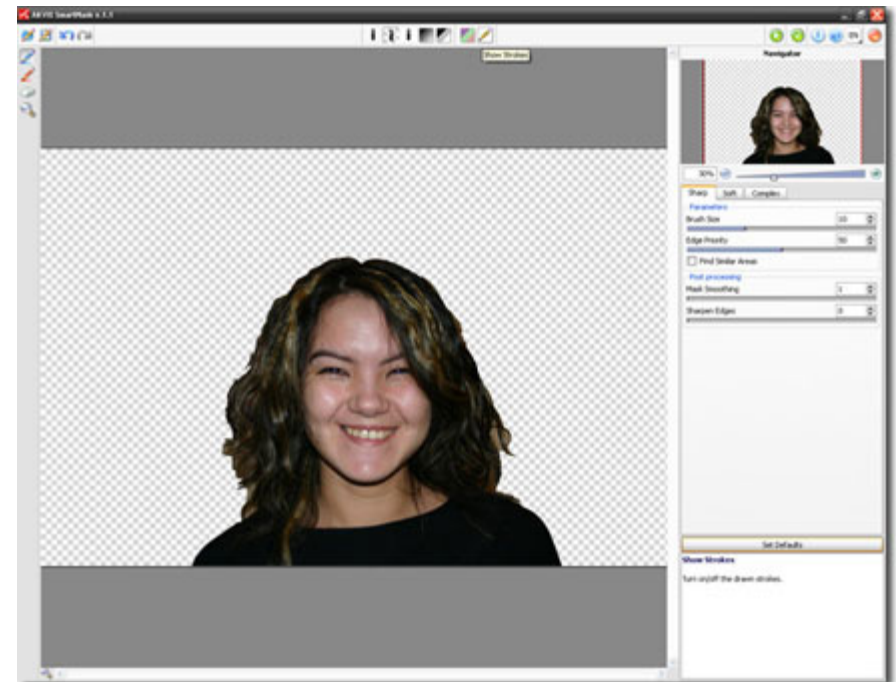


Fig.8.

Cut out a human figure from a photo

- The clothes have been cut out very well, but in general the result does not fully satisfies us. We continue our work.
- Press the button Show overlay. (Fig.9). Switch to the **Soft** mode. (Fig.10).
- Choose the green pencil and increase the value of the **Brush Size** parameter. (Fig.11).

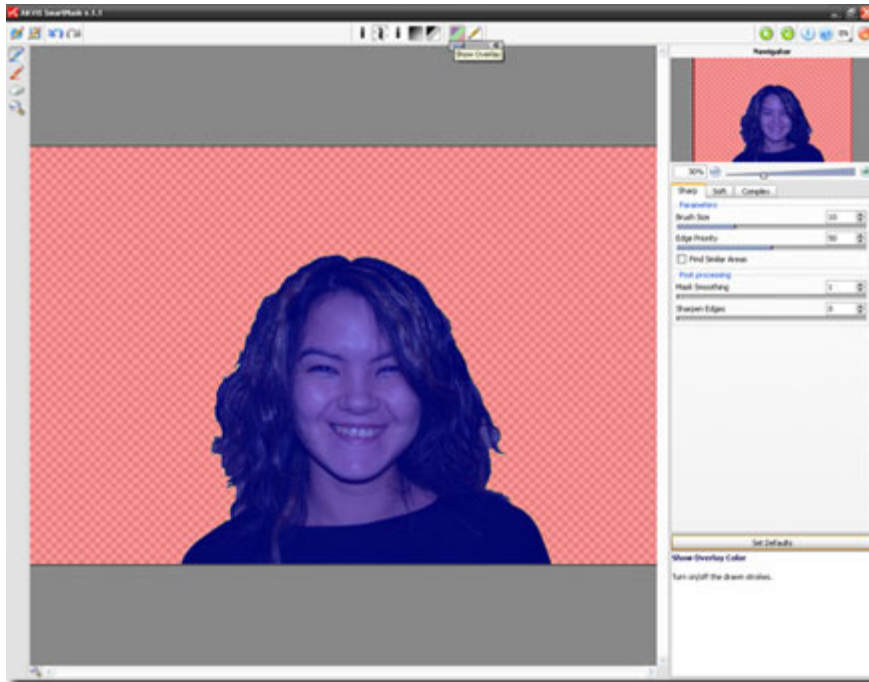


Fig.9.

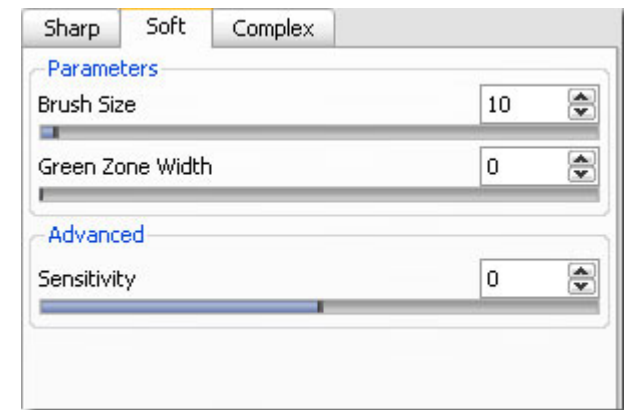



Fig.10.



Fig.11.

Cut out a human figure from a photo

10. Paint over the difficult areas (the hair) with the green pencil. (Fig.12).
11. Press the button  to start the image processing in the **Soft** mode. The result is much better indeed. Now we have to remove the stains on the background. (Fig.13).

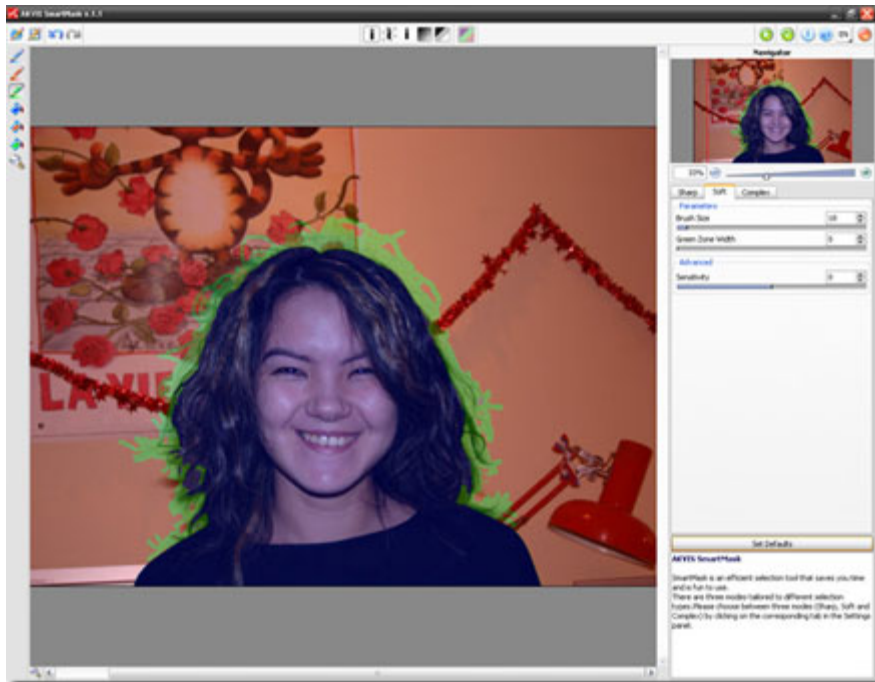


Fig.12.

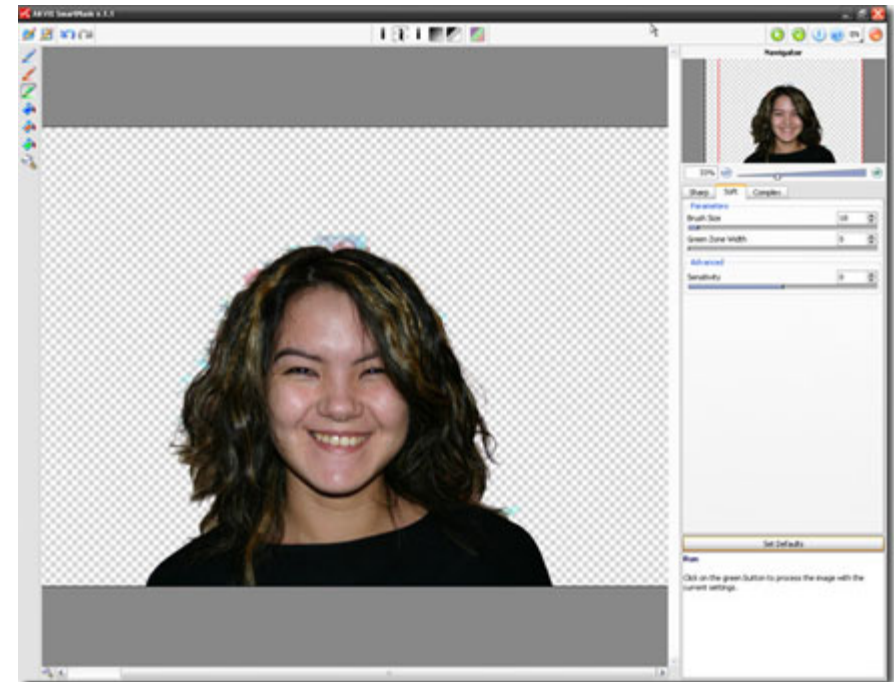


Fig.13.

Cut out a human figure from a photo

12. Switch to the **Complex** mode. (Fig.14).

13. Use the **Zoom** tool to scale up the image and work with the problem areas. (Fig.15).

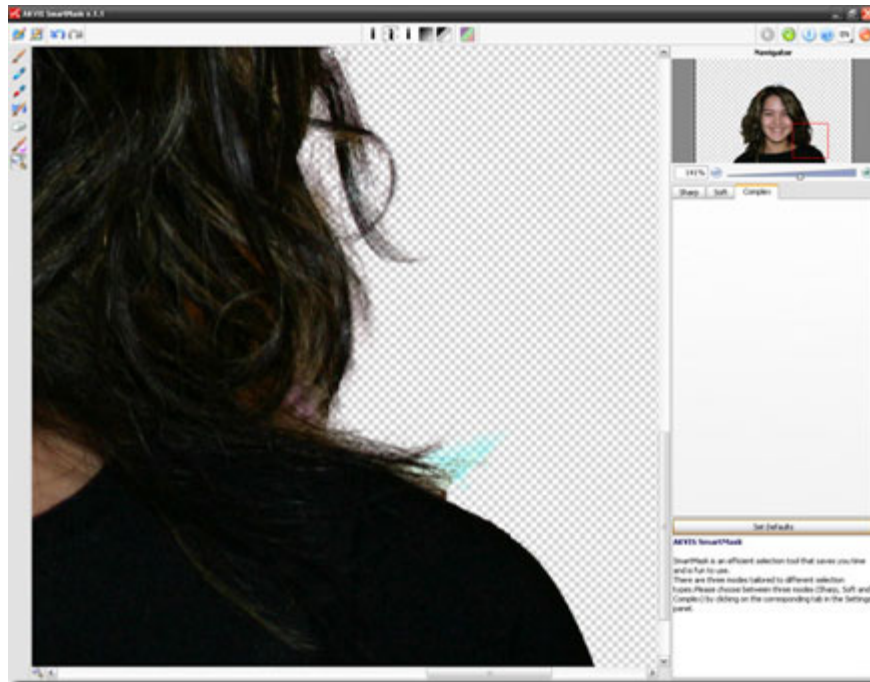


Fig.15.

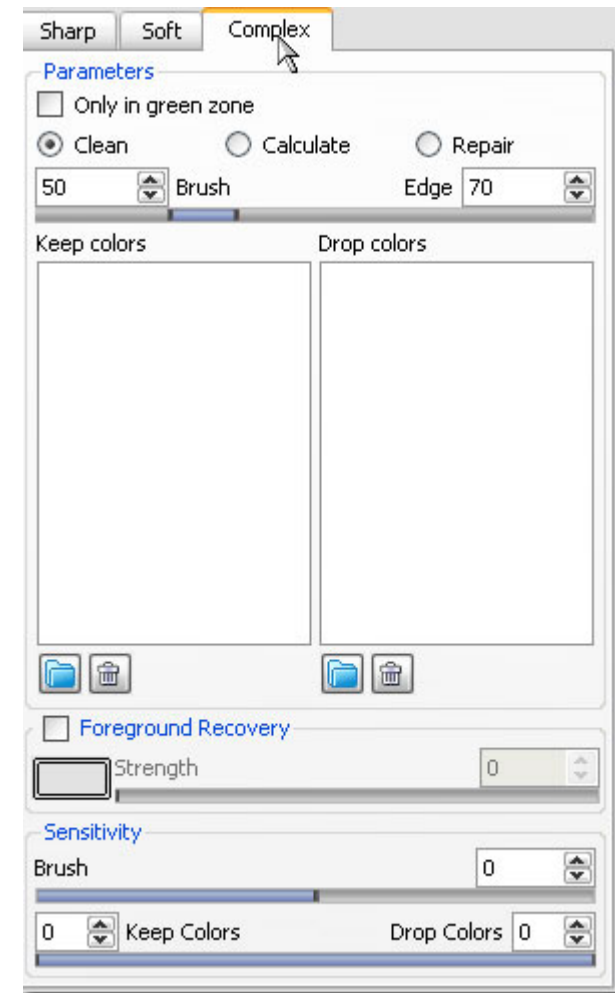


Fig.14.

Cut out a human figure from a photo

14. Switch to the mode that shows the image in its original state. (Fig.16).

15. Choose a color in the **Keep colors** and **Drop colors** lists using the corresponding tools. (Fig.17).

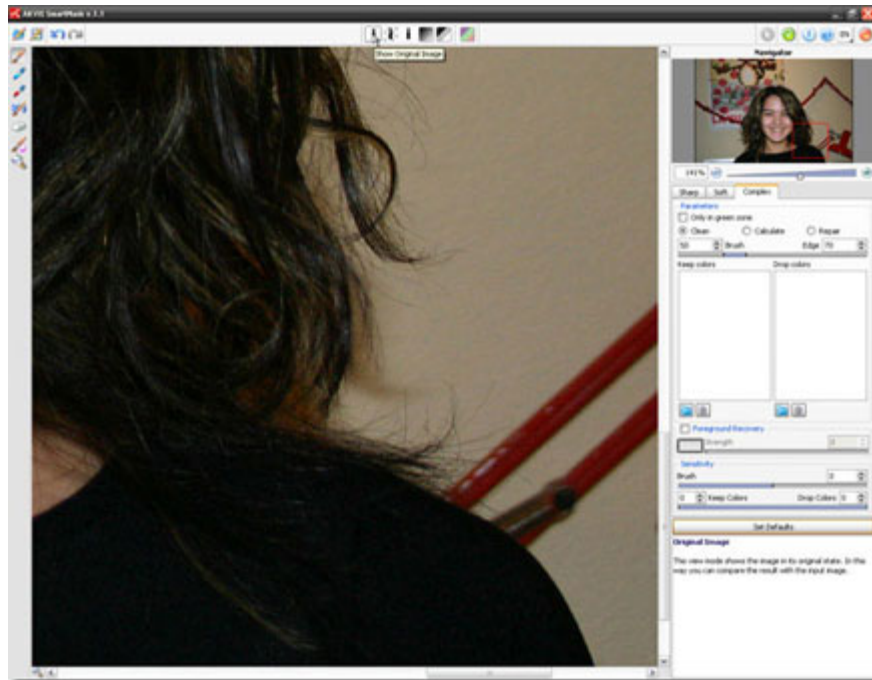


Fig.16.

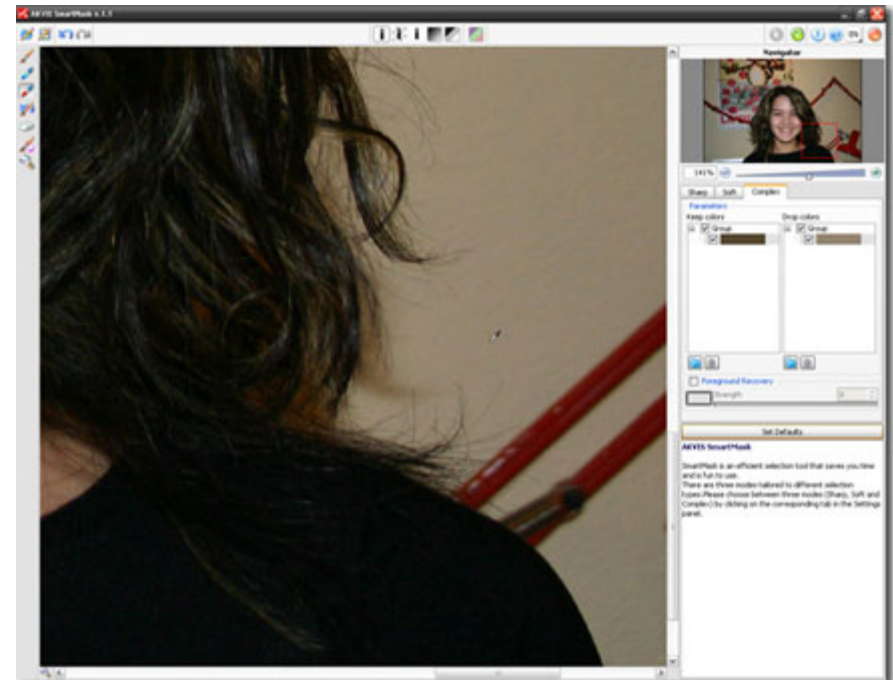


Fig.17.

16. Choose the **Magic Brush** tool in the **Toolbar**. (Fig.18).

The **Calculate** check-box is enabled. (Fig.19).

Using the **Magic Brush** tool draw over girl's hair. (Fig.20).

Here is the result: (Fig.21).



Fig.19.

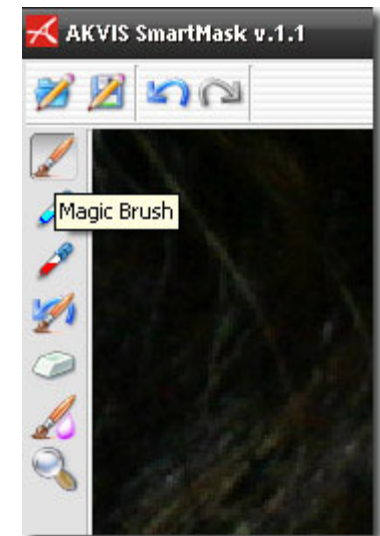


Fig.18.

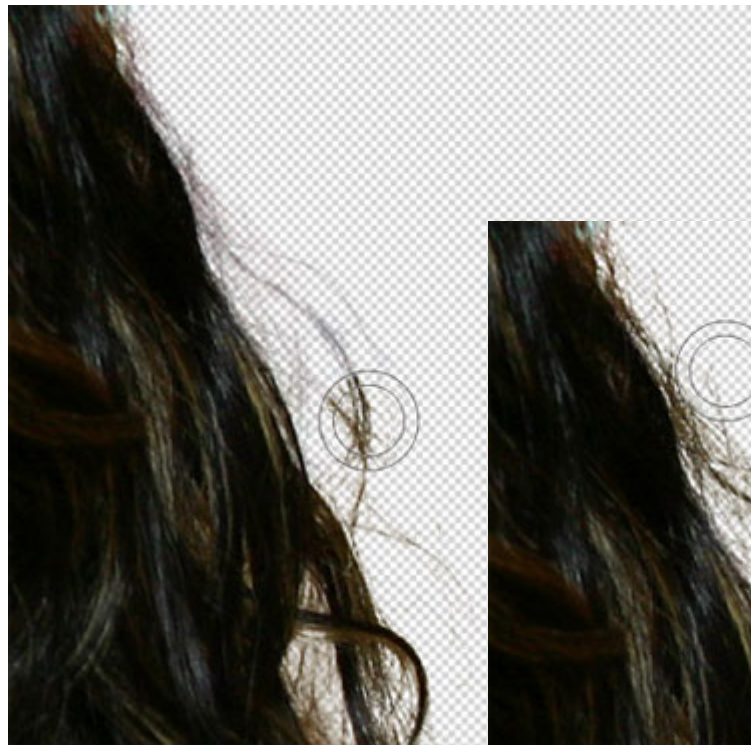


Fig.20.

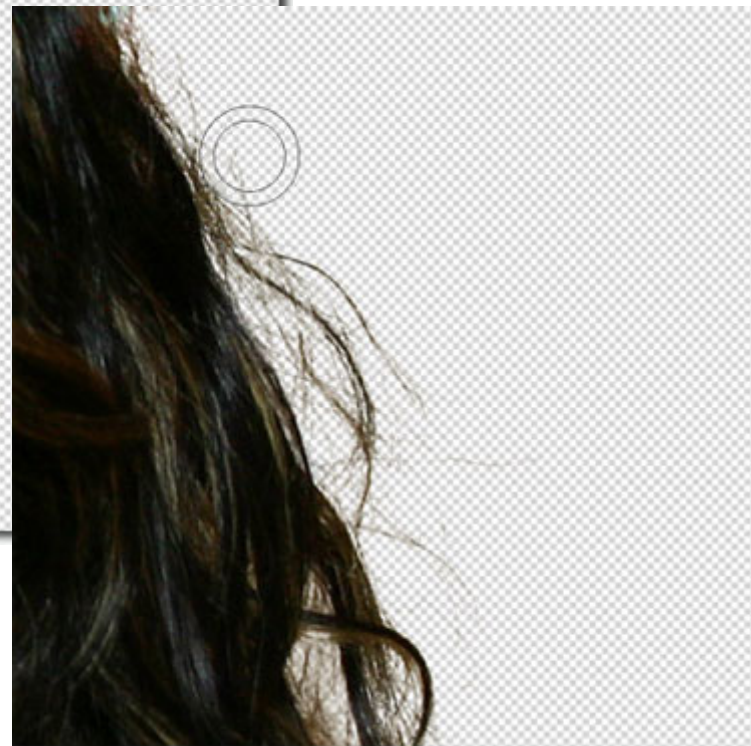


Fig.21.

Cut out a human figure from a photo

17. Let's improve the result further.

Increase the value of the **Sensitivity** parameter of the brush

(Fig.22) and draw over the hair. (Fig.23).

18. Now enable the **Foreground Recovery** check-box and choose the umber color (Fig.24). Use the **Magic brush** again.

At last the hair look naturally enough! (Fig.25)

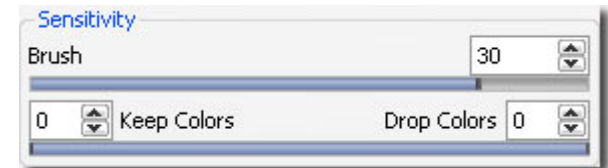


Fig.22.

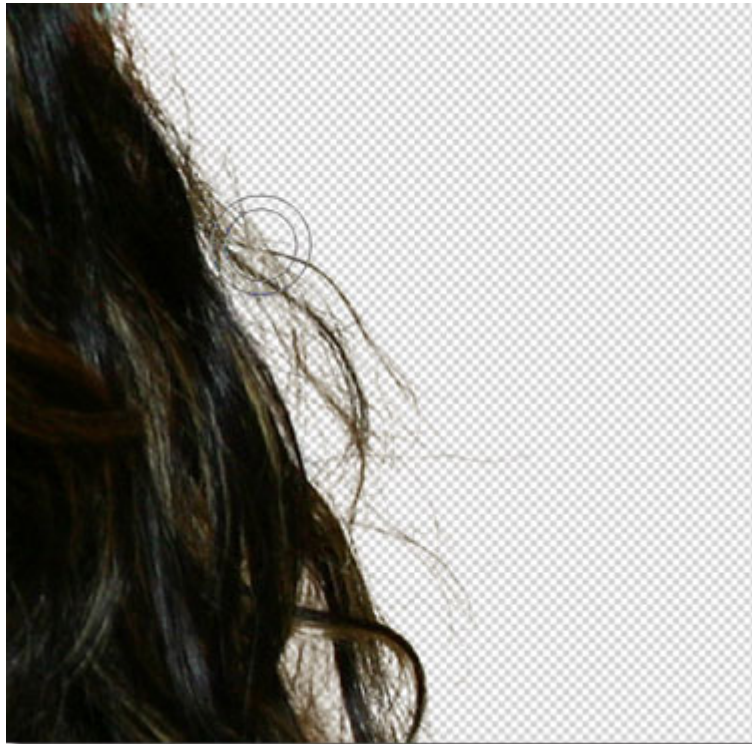


Fig.23.

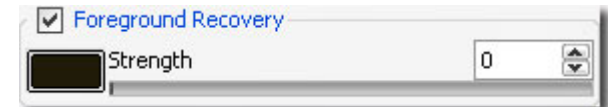


Fig.24.



Fig.25.

Cut out a human figure from a photo

19. Press the button  to apply the result.

Now you can add any background and your new photo is ready.

