



**COVENANT TRAINING CENTER (CTC) TEXAS**  
READINESS SOLUTIONS FOR U.S. AND ALLIED  
MILITARY FORCES, GOVERNMENT AGENCIES,  
LAW ENFORCEMENT AND CORPORATE CUSTOMERS.



CTC IS A "MISSION FOCUSED" TRAINING FACILITY  
DESIGNED TO ENHANCE OPERATIONAL READINESS.



**COVENANT SECURITY**  
INTERNATIONAL

MISSION FIRST - CUSTOMER ALWAYS™



**S**pecial Operations Training, Homeland Defense, SWAT, PSD, Pre-Deployment Workups, Urban Sniping all have unlimited training opportunities on this ultimate training ground. Covenant Training Center (CTC), formerly a U.S. Navy Surface Warfare munitions manufacturing plant, encompasses over 2,000 acres of hostile environment focused training for Law Enforcement, Military, Homeland Defense and Commercial entities.

**Facility** - Our unique facility replicates a realistic rural/urban environment with over 140 buildings and structures, including 11 buildings ranging from 4,000 to 66,000 square feet and including multi-room, multi-floor structures all capable of scenario-based training and multiple flat ranges from 5 yards to 750 yards surrounded by thousands of usable acres of Texas ranchland (FARP, LZ/DZ, infil/exfil, etc.). All of our structures are capable of UTM®, Simunition®, SRTA "Blue Bolt," or live fire (bullet trap) configurations. CTC offers discrete and secure training for a range of military, law enforcement, homeland defense and corporate training activities. CTC is enclosed by a barbwire fence and has a controlled access powered gate, with additional security available.

**Driving** - Covenant Security International, LLC. is strategically teamed with the world-renowned driving expertise of Tony Scotti and the Vehicle Dynamics Institute (VDI). Operating on our precision driving range (2008) or on a mobile training team (MTT) basis, Covenant and VDI deliver the highest caliber, most operationally realistic, vehicular dynamics, survival and combat training in the world today. We can offer training on or off-road, inside urban or rural environs, and can package that same training for delivery at your locale. We offer courses from one-day corporate/civilian safety in sedans or SUVs to multiple day **full mission profile training in M998 military issue HMMVV (Military Force Protection)**.

**Location** - CTC is located in McGregor, TX, an easy 20-minute drive from Waco, TX (population approx. 200,000, metro area). Waco is a friendly city with modern services and accommodations, to include the regional airport. Waco Regional Airport is serviced several times daily by both American and Continental Airlines, each less than an hour's flight from Houston or Dallas Fort Worth International airports. McGregor offers all the modern city conveniences within 10 minutes of CTC, including dining, shopping, grocery, laundry and lodging.

**Lodging** - CTC has an excellent rate with the modern, local hotel. The Weston Inn opened in July 2005 and offers Texas hospitality, clean rooms, a nice pool and great rates and is less than 10 minutes from CTC. In addition, we can house up to 50 personnel on-site in our ISOFAC facility, in military conditions (cots). CTC also has its own brand new, just off-site "team-house" for organizations smaller in number (up to 12 personnel). This is a 1-year old modern 4-plex with two to four beds per unit, laundry, cable TV, full kitchen, etc. for those requiring a lower profile.

We thank you for taking the time to review our capabilities and looking forward to training with you.

Tom Buchino  
Vice President  
Training Division



Covenant Training Center is a "one-stop-shop" when it comes to readiness training. We pride ourselves on the creation of diverse, realistic training environments which challenge the full spectrum of professionals from Police Officer to High Risk Security to Special Missions Personnel.

**Cadre:**

- Joint SOF centric (SOC/JSOC)
- Subject Matter Experts (SME)

**Ideal Realistic Training Environments for:**

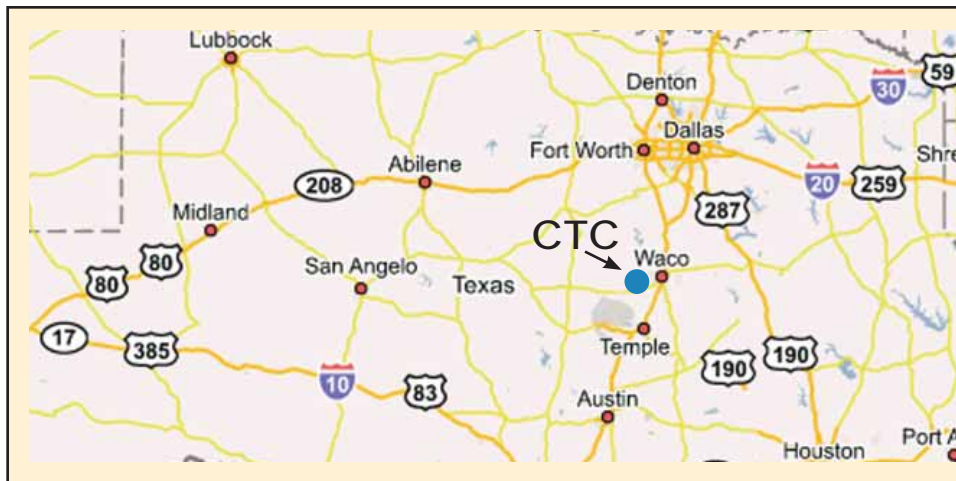
- Raids/Assaults/CQB/Breaching
- Force-on-Force
- Mission Planning (ISOFAC)
- Cordon/Search
- ASOT/ASOC
- Tactical HUMINT
- Convoy/Motorcade ops
- Small Unit Tactics
- PSD/EP Training
- Air Delivery/Air Assault/Mounted ops
- HALO/Static line
- Felony Stop/Drug Warrant
- UAV
- R&S/Sniper/Observer
- Patrolling
- Tactical Leadership
- Tactical Medicine
- Counterproliferation
- C-IED/EOD
- K9
- Defensive Tactics
- Much more...

## COVENANT SECURITY

Covenant is a 100% American owned and managed brand, founded in 1992 under the name of Worldwide Security Services. Building on our reputation for first class delivery of high quality service and cost effective contract administration, Covenant has enjoyed over 15 years of growth, while maintaining an unparalleled commitment to performance. We are a DCAA compliant, financially mature brand and a seasoned public and private sector service provider, with over \$900,000,000 in government and commercial past performance. We have extensive experience managing complex, multiple location commercial and government projects, with over 2,400 current employees.

Covenant Security International, LLC. (CSI) and The Covenant Companies specialize in the protection of government and commercial interests, both in the United States and overseas. Covenant serves Government, Commerce and Private entities with a range of security, assessment, consulting and training services. CSI's success rests in our ability to hire highly trained, professionally qualified personnel, coupled with our expertise in commitment to customer service.

**Covenant has enjoyed over 15 years of growth, while maintaining an unparalleled commitment to performance.**



## OUR LOCATION

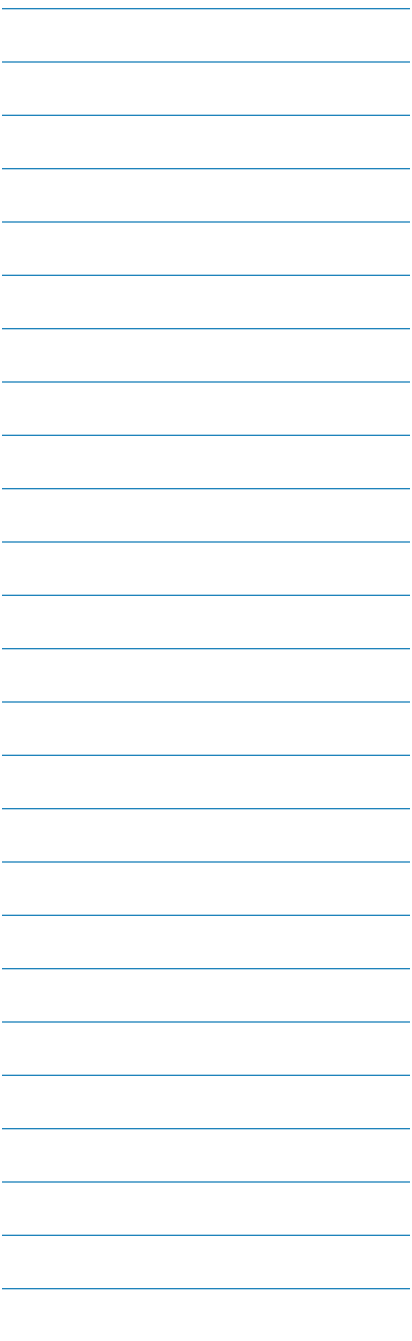
Covenant Training Center (CTC) is located in the Central Texas town of McGregor. Positioned midway between Dallas and Austin, CTC is easily accessible by all means of transportation. Just 13 miles SW of Waco TX, Covenant Training Center enjoys its discrete, small-town environment while remaining close to major city infrastructure.

## DISTANCES

Distances from Texas Airports	
McGregor Executive Airport	8 miles
Waco Municipal Airport	21 miles
Dallas Fort Worth Airport	93 miles
Killeen—Ft. Hood Airport	53 miles
Houston Intercontinental Airport	235 miles

Distances from around Texas and the USA	
Fort Hood, TX	53 miles
Fort Sam Houston, TX	163 miles
Fort Bliss, TX	633 miles
Fort Carson, CO	811 miles
Fort Bragg, NC	1270 miles
Norfolk, VA	1480 miles
Fort Lewis, WA	2328 miles

# Table of Contents



## Ranges 1

Range 1 .....	1
Range 2 .....	2
Range 3 .....	3

## Training Areas 4

Breaching .....	4
COB .....	5
Defensive Tactics (DT) .....	6
Rappel - Fast Rope Tower .....	6
Combat Town - Urban Village .....	6
Driving - Road Network .....	7
Warehouses .....	8
Bunker Farm .....	8
Urban Terrain .....	9
Rural Terrain .....	9
LZ - DZ .....	10
Mission Planning Facility (MPF) (ISOFAC) .....	11

## Training Courses 12

K9 Training .....	12
Courses .....	13

## Training Support 14

Classrooms .....	14
Dining .....	14
Maintenance Facility .....	14
Ammo/Weapons/Explosives/Equipment .....	15
Gym .....	16
Shower/Restrooms .....	16
Role Players .....	16
Night Operations .....	17
Weapons & Equipment Rental .....	17

## Additional Information 18

Lodging .....	18
Car Rental Services at Waco Regional Airport .....	18
Admin/Phones/Internet .....	18
Local Dining .....	18
Commercial Airlines .....	18

## Planning Information 19

Airport Data .....	19
Killeen, Fort Hood Regional Airport .....	19
McGregor Executive Airport .....	22
Emergency Contact Information .....	25

# Range 1



CTC is a Texas Department of Public Safety (DPS) certified range. Range # 1550018.

Covenant Training Center (CTC) provides Combat Marksmanship programs of instruction to qualified civilian & government organizations and agencies.

Covenant Training Center (CTC) provides Range Safety Officers (RSO) for all training evolutions. Please contact us for more information.

#### FEATURES:

- 100 yd range with tgt system
- Pistol, Shotgun, Rifle, LMG
- 12 firing points
- Multiple target configurations
- Steel targets / vehicle / glass
- Vehicle formations and contact drills (*drive and shoot*)
- Static and maneuver shooting
- Elevated shooting platform
- Range Shed (Support Equipment)
- Safety and Range Policy

## Range 2



### FEATURES:

- 750 yard drive and shoot all weather range (1,000 yard capable March 2008)
- Small Arms, Machine Gun
- Known Distance
- Facilitates up to 30 firing points
- Multiple Target configurations/types
- Steel, Static Vehicles, Structure, Mechanical, Precision targets
- Mounted and Dismounted maneuver
- Two elevated shooting platforms

# Range 3



Covenant Training Center (CTC) provides Firearms Instructor (FAI) programs of instruction to qualified government organizations and agencies. Please contact us for more information.

#### FEATURES:

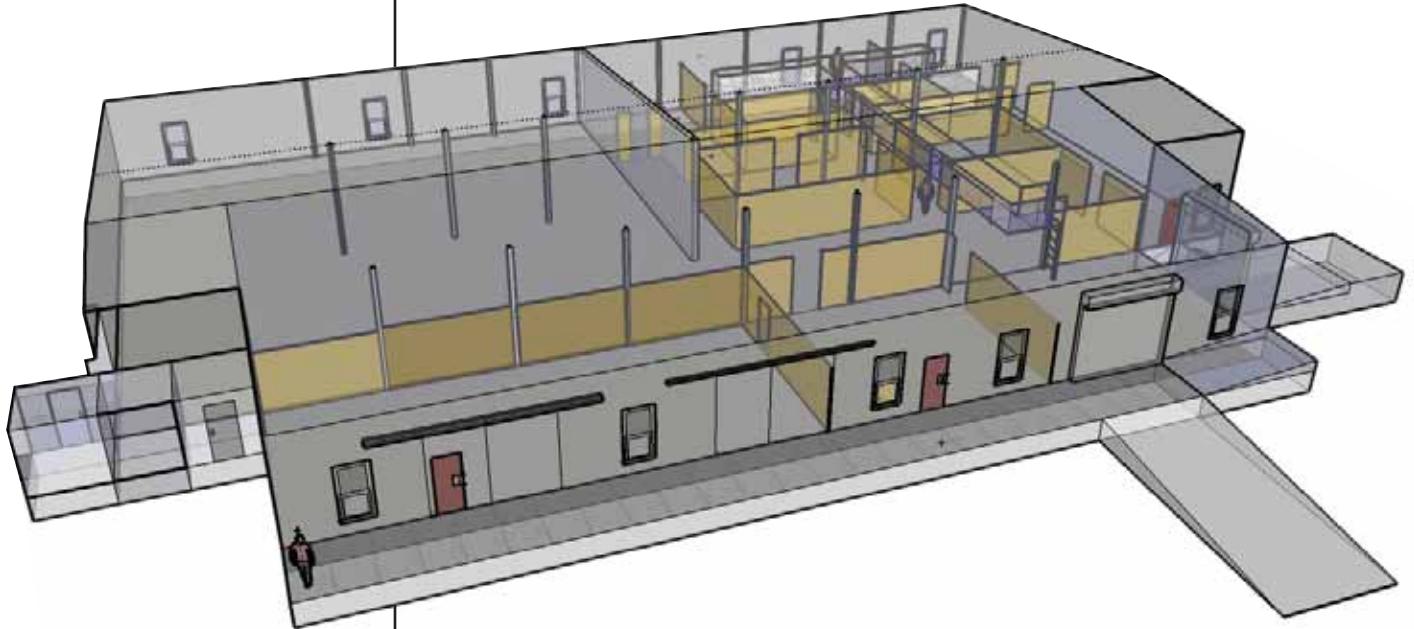
- 100 yard, all weather range
- Pistol / Carbine Range
- Marked Distance
- 10 firing points
- Action Target System w/Runner
- Computer Course of Fire Capable
- Small Arms fires, Qualifications, Light Maneuver, Vehicle Fires
- Range Shed (*Support Equipment*)
- Safety and Range Policies Posted



# Training Areas



## Breaching Facility



CTC's Breaching Facility is a 13,000-square-foot, multi-entry, multi-apparatus, full mission profile (FMP) training venue.

### FEATURES:

- Multiple Breach Points
  - Windows / Windows with security cages
  - Pry-Doors
  - Ram Doors
  - Shotgun Breach Doors
  - Explosive Breach Doors
  - Thermal Cutting
  - Saw Techniques
  - Fence Breach
  - Lock Breaching
- 6,600-square-foot Shoot House (w/Catwalks)
- SRTA rated
- Live-fire (bullet traps)
- Warehouse scenarios (6,000 sq ft)
- Residential, Commercial Scenarios (7,000 sq ft)
- Trained Role-Players (costumed to provide realism)

Covenant Training Center (CTC) provides instruction in basic and advanced breaching operations to qualified government organizations and agencies. Please contact us for more information.







# Training Areas



Covenant Training Center (CTC) provides instruction in Small Unit Tactics (SUT) to qualified government organizations and agencies. Please contact us for more information.

## Defensive Tactics Area

### FEATURES:

- 3,000 square feet
- Climate controlled
- Training equipment on hand
- Adjacent to classrooms and dining areas

## Rappel-Fast Rope Tower

### FEATURES:

- 40' rappel / 35' fast rope
- Container inspection side
- Primary & alternate anchor points
- Window entries
- Climbing equipment available for rent



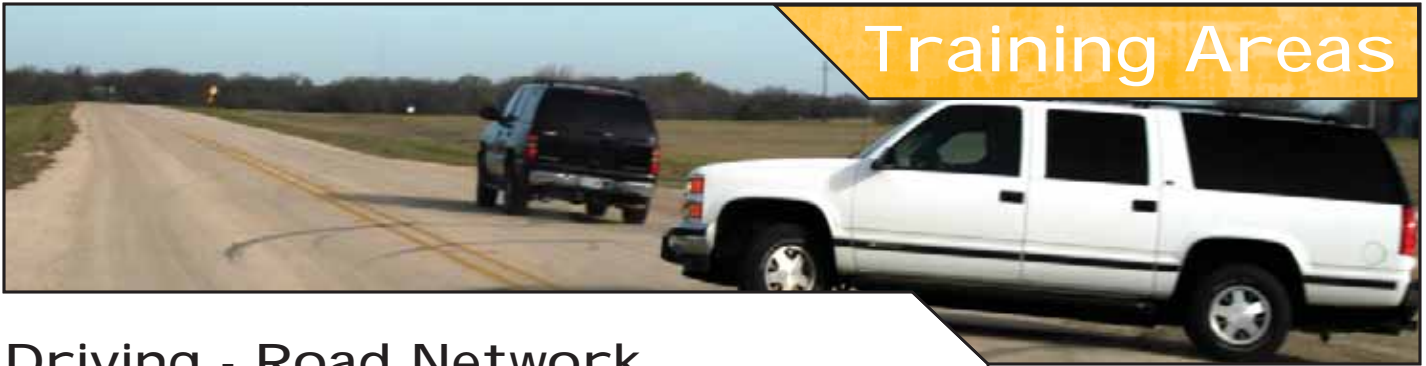
## Combat Town/Urban Village

### REPLICATING A SMALL VILLAGE, THIS TRAINING AREA POSSESSES:

- 10 buildings (expanding to 40, FEB 2008)
- Adjacent and connected to CQB Facility for increased scenario development
- 2 Story Buildings
- 2 blocks in depth
- Perimeter walls and alleyways
- Trained Role-Players
- Narrow, Restricted Vehicle Routes
- Courtyards
- Remote Target Systems
- Loudspeaker system for variety of scenario use



# Training Areas



## Driving - Road Network

CTC has over 12 miles of road network in an access controlled facility which can be used for force-on-force counter ambush training. This road network is primarily asphalt paved, two-lane roads in good condition to fair condition running between a series of single and multi-story buildings replicating small urban and rural areas.

CTC also has access to an abandoned runway within eight miles of the facility for dynamic driving skills training and has committed to construction of a 350-yard long by 150-yard wide dynamic driving track to be built on a controlled access scenario based driving range (completion 2008).

We can offer training on or off-road, inside urban or rural environs and package that same training for delivery at your locale. We offer courses from one-day corporate/civilian safety in sedans or SUVs to multiple day full mission profile training in M998 military issue HMMVV (Military Force Protection).

### VEHICLES AVAILABLE:

- M998 military issue HMMVV (two)
- Ford Crown Victoria Police Interceptor
- Chevrolet Suburban / Tahoe
- Various Model Track Autos
- 4-wheel All Terrain Vehicles (ATVs)



Driving Instruction – Covenant Training Center is strategically teamed with the world-renowned driving expertise of Tony Scotti and the Vehicle Dynamics Institute (VDI). Operating on our precision driving range (2008) or on a mobile training team (MTT) basis, Covenant and VDI deliver the highest caliber, most operationally realistic, vehicular dynamics, survival and combat training in the world today.



# Training Areas



## Warehouses

CTC has thousands of square feet of commercial warehouse space available for "as-is" training, "build-to-suit" scenario-based training, and short or long term storage. Much of CTC warehouse space has a loading dock and is fully forklift and tractor-trailer capable.



## Bunker Farm

CTC has a 400-acre former ammunition bunker farm with 120 structures which can be utilized for a variety of realistic scenarios. Cordon/search, Raid, WMD, HUMINT; the uses for this area are unlimited only by the imagination.



# Training Areas



## Urban Terrain

Our unique facility replicates a realistic urban environment with over 140 buildings and structures, including eleven buildings ranging from 4,000 to 66,000 square feet and including multi-room, multi-floor structures all capable of scenario based training and multiple flat ranges from 5 yards to 750 yards surrounded by thousands of usable acres of Texas ranchland (FARP, LZ/DZ, infill/exfil, etc).

All of our structures are capable of UTM®, Simunition®, SRTA “Blue Bolt,” or live fire (bullet trap) configurations. CTC offers discrete and secure training for a range of military, law enforcement, homeland defense and corporate training activities. CTC is enclosed by a barbwire fence and has a controlled access powered gate, with additional security available.

With all the characteristics of a small city, CTC is an ideal, realistic and relevant location for all your urban scenario driven training needs.

---

---

---

---

---

---

---

---



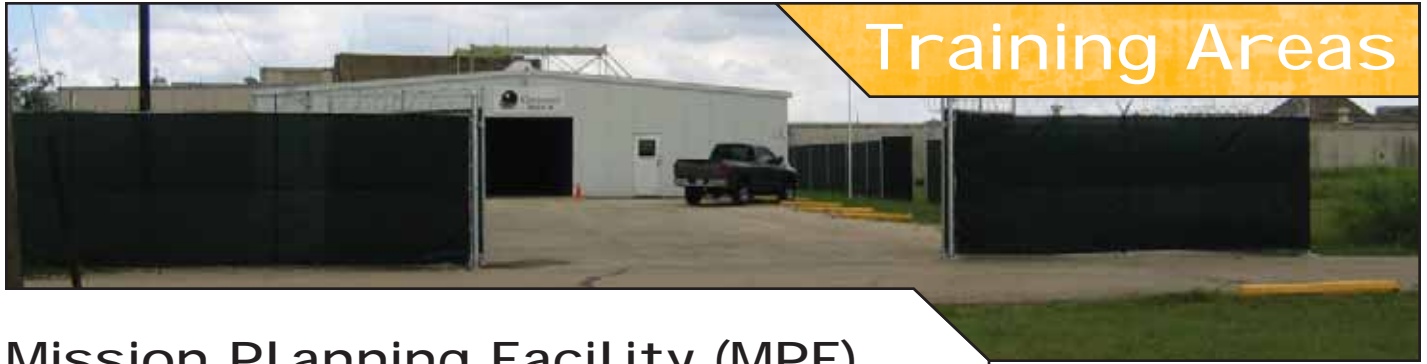
## Rural Terrain

The urban areas of CTC are surrounded by thousands of acres of farm and ranchland accessible for training evolutions at CTC. If your group requires cross-country movement to the objective, distant rotary wing insertion, FARP, or other off-site approach, etc., please contact us for further information.





# Training Areas

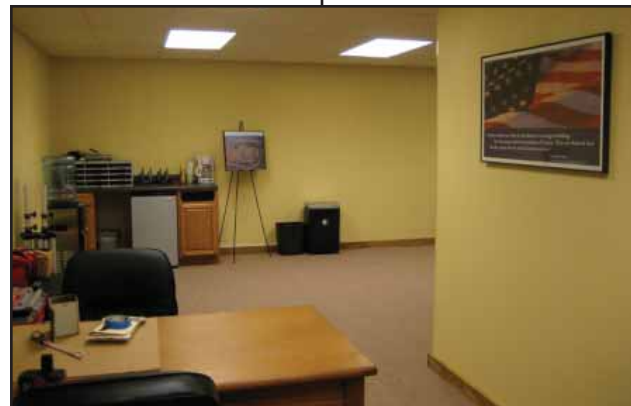


## Mission Planning Facility (MPF) Isolation Facility (ISOFAC)

This facility is designed to provide tactical elements a secure mission planning location for pre-execution activities. Located adjacent to CTC's one-mile tunnel complex and major training venues, the MPF/ISOFAC facilitates staff and operator level planning, vehicle and equipment storage, permission rehearsals and lodging.

### FEATURES:

- Secure Area, climate controlled staff offices with phone and Internet
- Operator planning bays / classrooms
- Lodging (up to 24 persons)
- Restroom and shower facilities



# Training Courses



## K9 Training

Covenant can provide a diverse menu of services spanning the entire spectrum of canine capabilities for law enforcement, military and corporations. Our canines are imported from select European vendors and imprinted at our primary Covenant Farms Canine Training Center (CFCTC) in Northern Virginia or at Covenant Training Center (CTC) in Texas.



### LOCATIONS

#### Covenant Farms Canine Training center – Virginia

Covenant Farms Canine Training center (CFCTC) in Northern Virginia is the primary world-class handler and canine training facility for Covenant canine training. Our primary Canine training site is located just outside of the National Capital Region in Northern Virginia. This premier canine training facility possesses modern furnished bedrooms with work stations, fully furnished common area with satellite TV and internet access, functional kitchen and dining area, conference and classroom and on-site kenneling, on-site canine imprinting area, on-site basic detection hide rooms, 22 acres of wooded and pasture land, conveniently located to Dulles International Airport, grocery and eating establishments nearby.

#### Covenant Training Center – Texas

Covenant also provides canine training on specific basis at the 2000 acre Covenant Training Center (CTC) in Texas. CTC is an "operators playground" with kennels, CQB, Live Breaching, Flat Ranges, 100+ buildings, miles and miles of roads, Drop Zones and Landing Zones and unlimited opportunities for full life support, scenario based training.

For more information on handler, canine or custom training, please contact us:

**Tim Tonsor, Vice President, Canine Operations**

Office: 703.273.2266 x244 • Mobile: 703.587.4073

Email: [tim.tonsor@covenantsecurity.com](mailto:tim.tonsor@covenantsecurity.com)

### CANINE SERVICES

- Canines
  - Single/dual purpose
  - Patrol-Security/tactical
  - Patrol-Law Enforcement
  - Explosives Detector
  - Narcotic/drug detector
  - Cadaver detector
- Contract Services
- Kenneling
- Training
  - On leash/off leash
  - Handler
    - Basic Canine Handler Course
    - Advanced Trainers Course
    - Kennel Master Course
  - Canine
    - Imprinting
    - Basic Odor
  - Teams
  - Trainers/Kennel masters
- Sales
  - Security
  - Law Enforcement





## Training Courses

Covenant Training Center (CTC) offers a variety of training, which we can deliver here at CTC, or at the suitable location of your choosing. The courses listed below are a sampling of what we offer, we can custom build curriculum to meet your needs as required. All courses are taught by veteran Special Operations and/or SWAT personnel, and supervised by combat veteran Special Forces personnel. Please contact us or check out our website for more information.

### MILITARY/LAW ENFORCEMENT

- Assault Breaching - 3 days
- Close Quarter Battle – CQB - 5 days
- Tactical Pistol - 2 days
- Tactical Carbine - 2 days
- Tactical Pistol & Carbine - 3 days
- Tactical Shotgun - 2 days
- Patrol Carbine - 2 days
- Firearms Instructor - 5 days
- Personal Security Detail Operations - 5 days
- Small Unit Tactics - 5 days
- Tactical Medic - 5 days
- Narcotics Officer Advanced Training - 5 days

### CORPORATE TRAINING

- Executive Force Protection Level 1 - 1 day
- Executive Force Protection Level 2 - 3 days
- Executive Leadership - 2 days
- Executive Mission Planning - 3 days
- Executive Team Building - 3 days

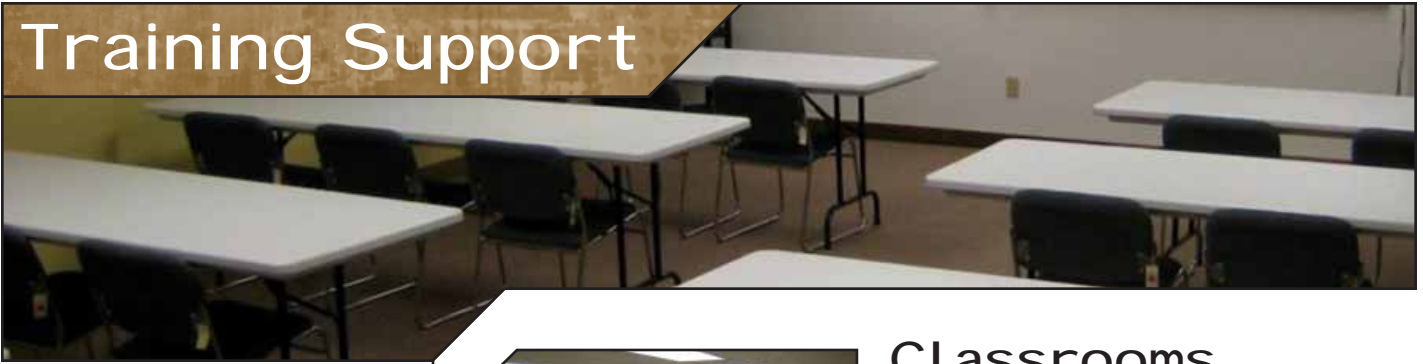
### GUARD FORCE TRAINING\*

- Basic Guard Force Training
- Advanced Guard Force Training
- Guard Force Supervisor/Leadership Training
- Sustainment Guard Force Training

\*For more information please download our course brochure from our website.



# Training Support



## Classrooms

### 25 person executive classroom

This classroom is carpeted, climate controlled, and resides next to the dining facility and Defensive Tactics (DT) facility. It can host up to 25 personnel and can be configured for smaller groups. It has full multi-media capability.

### 50 person executive classroom

This classroom can be split into two 25-person classrooms, is climate controlled, has a concrete floor and resides within the Mission Planning/ Isolation Facility (ISOFAC). It can host up to 50 personnel and can be configured for smaller groups. It has full multi-media capability.



## On-Site Dining

### On-Site

CTC's on site Dining Facility (DFAC) is climate controlled, has a "hot line" capability, and can comfortably seat 36 personnel at one time.

CTC also has a standing agreement with excellent local catering and can provide quality, cost effective meals service 24/7 for individuals training on CTC.



## Maintenance Facility

24,000 square-foot interior bay space

Capable of repairs to include:

- Wheel and tire service
- Operator and general mechanical service
- Minor body repair

Characteristics:

- Hydraulic Lift
- Tire Changer
- Wheel Balancer
- Welding Equipment
- General Service Tools/Equipment
- Recovery Vehicle (Contact Truck)

## Ammo/Weapons/Explosives/ Equipment Storage

CTC has "lock and leave" secure storage capability in one of our military weapons grade storage bunkers. We can securely (alarm/armed guard/police response) store weapons, ammunition, explosives, gear, vehicles and logistics material in a variety of states from simply fenced in to the highest-class vault storage.

We also have the ability to segregate unit equipment on the facility to pre-position, lock and leave or dry store materials. CTC's proximity to Fort Hood, McGregor Executive Airport (C17 capable) and rail network makes the delivery and recovery of equipment a reasonable option.

CTC possesses three US military constructed explosive/ammunition storage bunkers. Our logistics staff can assist you with advance storage (pre-positioning), temp storage, "lock and leave" storage, and long term warehousing of equipment, vehicles and munitions.



### Bunker #1:

CTC and customer weapons storage

- 1,000 lb vault door (single entrance)
- Three lock system
- Alarmed with law enforcement monitoring and dispatch
- Weapons cleaning equipment and tables, compressed air
- Dehumidifier



### Bunker #2:

Customer Storage

- Cage and locking interior doors
- Dual entrance
- Dehumidifier

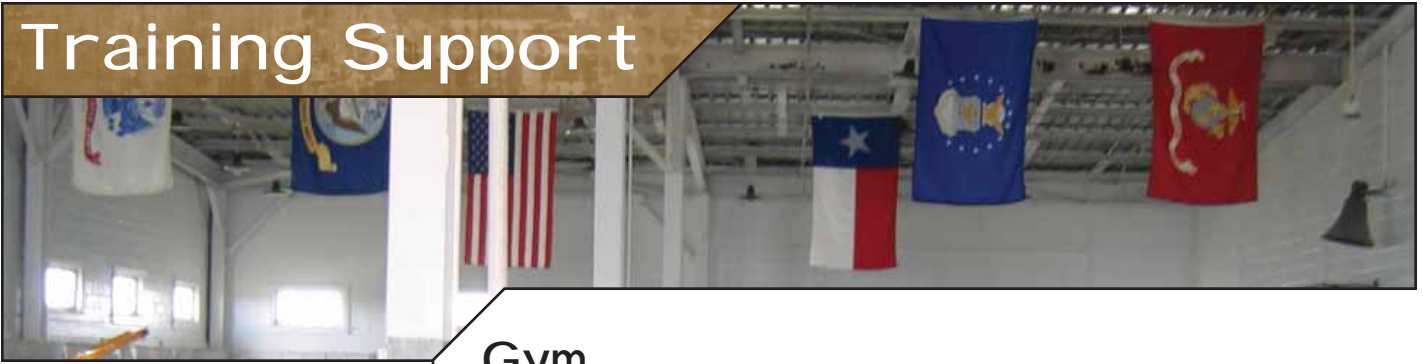
### Bunker #3:

Customer Storage

- Roll-up doors (Garage Type)
- Dual entrance
- Adjacent to CTC's tunnel complex for loading ease



# Training Support



## Gym

- Free Weights
- Leverage Station (Multi-exercise)
- Pull-Up bars
- Step Boxes
- Kettle Balls
- Rope Climb



## Showers- Restrooms

CTC has indoor restroom and hot water shower facilities for use in support of training and our on-site lodging. We supplement this capability with portable restrooms when necessary.



## Role Players

CTC can provide US Special Forces trained role-players, in costume, for some of the most realistic, dynamic, force-on-force training available. Our role players can support force on force scenarios with UTM®, Simunitions® or paint ball weapons.

All CTC role players receive training on current threat techniques, tactics and procedures (TTPs) in order to replicate actual enemy activities.



# Additional Information



## ADMIN/PHONES/INTERNET

CTC can provide customers with full admin support to include access to "land line" phones, internet, photo copying, and office/meeting space.

## LOCAL DINING

**McGregor, TX** (8-10 minutes from CTC)

### Burger King

307 W McGregor Drive  
(254) 840-4046

### Bush's Chicken

710 W Hwy 84  
(254) 840-4300

### Coffee Shop Café

1005 George Bush Parkway  
(254) 840-2027

### Sonic

926 Hwy 84  
(254) 840-2446

### Jack's Smoke House BBQ

700 W McGregor Drive  
(254) 840-3344

### Subway

612 W McGregor Drive  
(254) 840-0555

## Waco, TX (20 minutes from CTC)

Waco has all major chain (Applebee's, Outback, Wing Express, Etc.), and locally owned and operated restaurants, taverns, bars and night clubs. Waco has a population of 120,000 citizens (city), and nearly 200,500 citizens (metro area). Baylor University is located within the Waco city limits and has a population of 14,000 (faculty and students).

## COMMERCIAL AIR

Airlines servicing Waco Municipal Airport (ACT)

- American Airlines
- Continental Airlines

## Lodging

**On-site** - CTC can house up to 24 personnel on-site in our ISOFAC facility, in climate controlled, military conditions (cots), with full indoor latrine and restroom facilities, adjacent to classroom, pallet storage and office/phone/internet facilities (in the same building). This location can be completely secured.

**Private offsite** (10 minutes away) - CTC also has its own brand new, just off-site "team-house" for organizations smaller in number (up to 12 personnel). This is a one-year old modern four-plex with two to four beds per unit, laundry, cable TV, full kitchen, etc. for those requiring a lower profile.



**Commercial offsite** (10 minutes away) - CTC has an excellent rate with the modern, local hotel. The Weston Inn opened in July 2005 and offers Texas hospitality, clean rooms, and a nice pool less than 10 minutes from CTC. The Weston Inn can house up to 64 personnel in single and double occupancy with advance notice.

**Weston Inn Suites**  
711 West McGregor Dr. (Hwy 84)  
McGregor, TX 76657  
(254) 840-0444



**Commercial offsite Waco** (20 minutes away) - Waco offers numerous lodging options, from the Hilton® to Motel 6®.

## Car Rental Services at Waco Regional Airport



1-800-777-5500 • [www.arac.com](http://www.arac.com)

Waco: (254) 714-0363

Hours: Mon-Fri 8:00 AM - 9:00 PM

Sat. 10:00 AM - 5:30 PM, Sun. 10:00 AM - 7:00 PM



1-888-897-8448 • [www.avis.com](http://www.avis.com)

Waco: (254) 756-1921

Hours: Mon-Fri 8:00 AM - 10:00 PM

Sat. 9:00 AM - 6:00 PM, Sun. 10:00 AM - 10:00 PM



1-800-736-8222 • [www.enterprise.com](http://www.enterprise.com)

Hours: Mon-Fri 8:00 AM - 8:00 PM

Sat. 10:00 AM - 6:00 PM, Sun. 12:00 AM - 5:00 PM



1-800-654-3131 • [www.hertz.com](http://www.hertz.com)

Hours: Mon-Fri 8:00 AM - 10:00 PM

Sat. 9:00 AM - 7:00 PM, Sun. 9:00 AM - 10:00 PM



## Airport Data:

### KILLEEN, FORT HOOD REGIONAL AIRPORT

FAA INFORMATION EFFECTIVE 30 AUGUST 2007

#### ■ LOCATION

FAA Identifier: GRK  
 Lat/Long: 31-04-02.1000N / 097-49-44.1000W  
 31-04.035000N / 097-49.735000W  
 31.0672500 / -97.8289167  
 (estimated)  
 Elevation: 1,015 ft. / 309.4 m (surveyed)  
 Variation: 07E (1990)  
 From city: 6 miles SW of central business district of the associated city  
 Time zone: UTC -5 (UTC -6 during Standard Time)  
 Zip code: 76544

#### ■ AIRPORT OPERATIONS

Airport use: Open to the public  
 Sectional chart: <http://www.airnav.com/sectionals>  
 Control tower: yes  
 ARTCC: FORT WORTH CENTER  
 FSS: SAN ANGELO FLIGHT SERVICE STATION [325-223-6000]  
 NOTAMs facility: GRK (NOTAM-D service available)  
 Attendance: CONTINUOUS  
 Wind indicator: yes  
 Segmented circle: no  
 Lights: DUSK-DAWN  
 Beacon: white (unlighted land airport)  
 Fire and rescue: ARFF index E

#### ■ AIRPORT COMMUNICATIONS

CTAF: 120.75  
 ATIS: 111.8 [1200-0300Z++]  
 GRAY GROUND: 126.2 279.5  
 GRAY TOWER: 120.75 285.5  
 GRAY APPROACH: 120.075 323.15  
 GRAY DEPARTURE: 120.075 323.15  
 CLEARANCE DELIVERY: 121.8 251.1  
 EMERG: 121.5 243.0  
 FT HOOD FLT FLW: 143.1 357.9 38.75  
 PMSV: 306.5 41.2  
 PTD: 125.05 305.15 38.7FM  
 RANGE CTL: 30.45 38.3FM  
 RDR: 118.95  
 WX AWOS-3 at ILE (7 nm E): 128.575 (254-690-3131)  
 WX AWOS-3 at LZZ (19 nm W): 119.075 (512-556-6392)

#### AIRPORT OWNERSHIP AND MANAGEMENT FROM OFFICIAL FAA RECORDS

Ownership: U.S. Army

Owner: U.S. Army ATCA-ASO  
 Cameron Station  
 Alexandria, VA 22314  
 Phone: (254) 287-8338  
 Contact: Ron Gerner,  
*Director of Aviation  
 for Military.*

Manager: Don Christian  
 8101 Clear Creek Rd,  
 Box C  
 Killeen, TX 76549  
 Phone: (254) 501-8700  
 Civilian ARPT Manager.

- PAR RWYS 15-33 LOCATED AT LAT 31-04-06.94N LONG 097-49-40.47W. ELEV 1012.2.
- FREQ 241.0 UNMTO.
- ASR ELEV 1171.1 PER NGS.
- REMOTE BRIEFING SVC AVBL 26 OWS BARKSDALE AFB, DSN 781-4775 C318-456-4775.
- ATIS OTS INDEFLY.

# Planning Information



## KILLEEN, FORT HOOD REGIONAL AIRPORT, *cont.*

### ■ NEARBY RADIO NAVIGATION AIDS

VOR	radial/distance	VOR name	Freq	Var
GRKr	332/2.2	GRAY VOR/DME	111.80	07E
LZZr	106/17.6	LAMPASAS VORTAC	112.50	08E
TPLr	239/22.4	TEMPLE VOR/DME	110.40	09E

NDB name	Hdg/Dist	Freq	Var	ID
STARN	150/6.5	323	07E	GR
IRESH	286/6.7	278	07E	IL
HOOD	231/7.1	347	07E	HLR
GEORGETOWN	336/24.2	332	06E	GUO
BURNET	040/28.7	341	07E	BMQ
HAMILTON	147/37.0	251	07E	MNZ

### ■ AIRPORT SERVICES

Fuel available: A

### ■ RUNWAY INFORMATION

#### RUNWAY 15/33

Dimensions: 10000 x 200 ft. / 3048 x 61 m

Surface: PEM

Weight bearing capacity: PCN 57 /R/B/W/T

Double wheel: 135000 lbs

Double tandem: 345000 lbs

Runway edge lights: high intensity

#### RUNWAY 15

Latitude: 31-04.795350N

Longitude: 097-50.104692W

Elevation: 1015.2 ft.

Traffic pattern: left

Runway heading: 150 magnetic, 157 true

Displaced threshold: no

Markings: precision, in good condition

Visual slope indicator: 4-light PAPI on left

PAPI OTS INDEFLY.

RVR equipment: touchdown

Approach lights: SALS

Touchdown point: yes, no lights

Instrument approach: ILS

#### RUNWAY 33

Latitude: 31-03.273262N

Longitude: 097-49.366750W

Elevation: 971.5 ft.

Traffic pattern: left

Runway heading: 330 magnetic, 337 true

Displaced threshold: 194 ft.

Markings: precision, in good condition

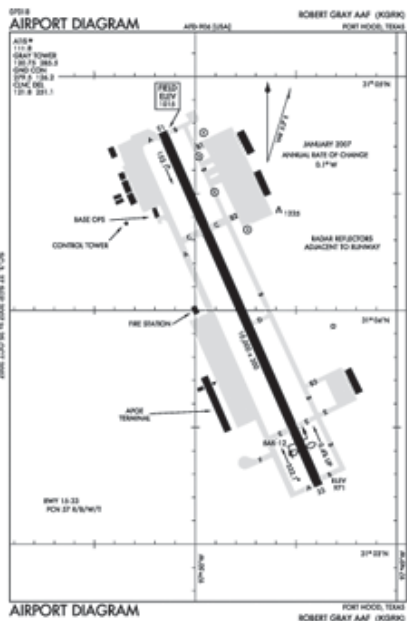
Visual slope indicator: 4-light PAPI on right

(2.77 degrees glide path)

Approach lights: SALS

Touchdown point: yes, no lights

Instrument approach: ILS/DME







# Planning Information



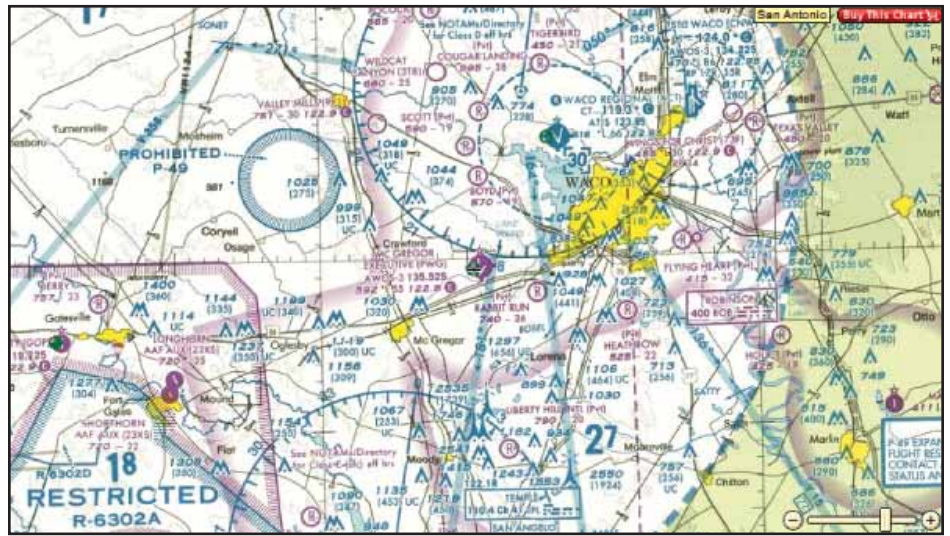
**MCGREGOR EXECUTIVE AIRPORT** • 4 miles west of Waco, Texas, USA  
 FAA INFORMATION EFFECTIVE 05 JULY 2007

## AIRPORT OWNERSHIP AND MANAGEMENT FROM OFFICIAL FAA RECORDS

Ownership: Publicly-owned

Owner: CITY OF MCGREGOR  
 PO BOX 192  
 MC GREGOR, TX  
 76657  
 Phone: (254) 840-2806

Manager: Rob Blanchard  
 PO BOX 192  
 MC GREGOR, TX  
 76657  
 Phone: (254) 848-5477  
 OR (254) 848-2345.



## LOCATION

FAA Identifier: PWG  
 Lat/Long: 31-29-05.7000N / 097-18-59.5000W  
 31-29.095000N / 097-18.991667W  
 31.4849167 / -97.3165278  
 (estimated)  
 Elevation: 592 ft. / 180.4 m (surveyed)  
 Variation: 06E (2000)  
 From city: 4 miles W of WACO, TX  
 Time zone: UTC -5 (UTC -6 during Standard Time)  
 Zip code: 76657

# Planning Information



## MCGREGOR EXECUTIVE AIRPORT, *cont.*

### AIRPORT OPERATIONS

Airport use: Open to the public  
Sectional chart: SAN ANTONIO  
Control tower: no  
ARTCC: FORT WORTH CENTER  
FSS: FORT WORTH FLIGHT SERVICE STATION  
NOTAMs facility: PWG (NOTAM-D service available)  
Attendance: 0700-2100  
Wind indicator: lighted  
Segmented circle: yes  
Lights: DUSK-DAWN  
MIRL RY 17/35 PRESET LOW INTST; TO INCR INTST ACTVT - CTAF.  
Beacon: white-green (lighted land airport)

### AIRPORT COMMUNICATIONS

CTAF/UNICOM: 122.8  
WX AWOS-3: 135.525 (254-848-4581)  
WACO APPROACH: 135.2 [0600-0000]  
WACO DEPARTURE: 126.125 [0600-0000]  
WX ASOS at ACT (9 nm NE): PHONE 254-754-6148  
WX AWOS-3 at CNW (15 nm NE): 134.225 (254-867-3880)  
WX AWOS-3 at 22XS (19 nm W): PHONE 817-287-8612

- APCH/DEP SVC PRVDD BY FORT WORTH ARTCC ON FREQS 133.3/269.5 (WACO RCAG) WHEN WACO APCH CTL CLSD.

### NEARBY RADIO NAVIGATIONAIDS

VOR	radial/distance	VOR name	Freq	Var
ACT	r184/10.9	WACO VORTAC	115.30	09E
TPL	r010/17.4	TEMPLE VOR/DME	110.40	09E
GRK	r036/37.2	GRAY VOR/DME	111.80	07E
GNL	r257/39.7	GROESBECK VOR/DME	108.80	05E

### AIRPORT SERVICES

Fuel available: 100LL JET-A1+  
For fuel aft hrs call 254-848-2345. Military fuel contract.  
Parking: hangars and tie-downs  
Airframe service: MAJOR  
Powerplant service: MAJOR  
Bottled oxygen: HIGH/LOW  
Bulk oxygen: HIGH/LOW

### Airport Operational Statistics

Aircraft based on the field: 84  
Single engine airplanes: 62  
Multi engine airplanes: 16  
Jet airplanes: 4  
Helicopters: 2  
Aircraft operations: avg 69/day \*  
65% local general aviation  
33% transient general aviation  
2% air taxi  
<1% military  
\* for 12-month period ending  
11 April 2006

# Planning Information



## MCGREGOR EXECUTIVE AIRPORT, *cont.*

### ■ RUNWAY INFORMATION

#### RUNWAY 17/35

Dimensions: 5501 x 75 ft. / 1677 x 23 m

Surface: asphalt, in good condition

Weight bearing capacity: Single wheel: 30000 lbs

Runway edge lights: medium intensity

#### RUNWAY 17

Latitude: 31-29.627567N

Longitude: 097-19.100483W

Elevation: 590.5 ft.

Gradient: 0.4

Traffic pattern: left

Runway heading: 173 magnetic, 179 true

Markings: nonprecision, in good condition

Visual slope indicator: 4-light PAPI on left (3.00 degrees glide path)

Runway end identifier lights: yes

Touchdown point: yes, no lights

Obstructions: 27 ft. trees, 1072 ft. from runway, 32:1 slope to clear

#### RUNWAY 35

31-28.732000N

097-19.082000W

566.0 ft.

0.4

left

353 magnetic, 359 true

nonprecision, in good condition

yes, no lights

25 ft. trees, 1008 ft. from runway, 250 ft. right of centerline, 32:1 slope to clear

#### RUNWAY 4/22

Dimensions: 3484 x 55 ft. / 1062 x 17 m

Surface: asphalt, in good condition

Weight bearing capacity: Single wheel: 12000 lbs

#### RUNWAY 4

Latitude: 31-28.763567N

Longitude: 097-19.066500W

Elevation: 567.6 ft.

Traffic pattern: left

Runway heading: 038 magnetic, 044 true

Markings: basic, in good condition

Touchdown point: yes, no lights

#### RUNWAY 22

31-29.177467N

097-18.601283W

568.0 ft.

left

218 magnetic, 224 true

basic, in good condition

yes, no lights









## Covenant Training Center (CTC) TEXAS



### Distances from Texas Airports

McGregor Executive Airport .....	8 miles
Waco Municipal Airport .....	21 miles
Dallas Fort Worth Airport .....	93 miles
Killeen—Ft. Hood Airport.....	53 miles
Houston.....	235 miles

### Distances from around Texas and the USA

Fort Hood, TX.....	53 miles
Fort Sam Houston, TX .....	163 miles
Fort Bliss, TX .....	633 miles
Fort Carson, CO .....	811 miles
Fort Bragg, NC.....	1270 miles
Norfolk, VA.....	1480 miles
Fort Lewis, WA .....	2328 miles



**COVENANT SECURITY**  
INTERNATIONAL

MISSION FIRST - CUSTOMER ALWAYS™

Covenant Training Center (CTC) • P: 254.840.3655 • ci-training@covenantsecurity.com • www.covenantsecurity.com

### Our Partners



[www.lwrfires.com](http://www.lwrfires.com)



[www.actiontarget.com](http://www.actiontarget.com)



[www.vehicledynamicsinstitute.com](http://www.vehicledynamicsinstitute.com)