

## 16 function digital gauge cluster for car/RV/boat

Tach, Temp, Volt, Fuel, Oil, RPM, MPH, Amps, and more



- 8 user configurable instrument panels
- Huge 5" X 3.5" GRAPHIC LCD display
- COMPACT 7" X 6" X 1.55" sealed aluminum enclosure or 4.5" X 3.5" pedestal display head
- Programmable calibration tables works with most existing senders
- Min/Max alarms for all inputs
- Locate multiple display heads up to 300 feet
- Remote Control and display on PC/PDA included
- USB memory stick or PC/PDA data logging included
- Field upgradeable
- Bluetooth wireless USB option
- Only 1.55" thick - easily fits into dash

Ideal as marine and boat gauge replacements or upgrades. They can also be used in automotive and RV applications as additional instrument clusters.

Units are capable of displaying multiple functions including digital tachometer, RPM, MPH, engine temperature, manifold temperature, exhaust temperature, oil pressure, water pressure, volts, amps, MAP, fuel level, battery charge, **and more** - all in a single multi-function gauge cluster.

Compact remote sensor interface mounts near engine and transmits data to several display heads using USB, serial, or wireless Bluetooth ports up to 300 feet

All sender/sensor inputs are programmable to match existing equipment. High/Low alarms are programmable for each sensor. Pick and choose your own sender combinations. Unique customizable calibration tables are available for all types of senders and can be downloaded to unit. Units can be configured for most standard automotive and marine senders.

Built-in USB ports for direct connection to PC or memory stick for data logging and display

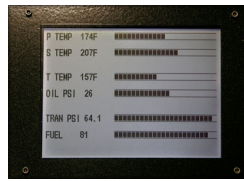
Display heads can accept up to 4 inputs directly or up to 16 when used with remote sensor unit.

Units have 10 different graphic display modes -

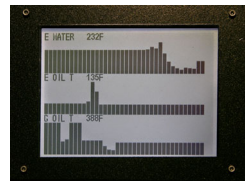
- **Data Display** - Values are displayed with Text labels and digital readouts. Up to 12 can be chosen for each of 8 possible groups.
- **Histogram Display** - Sensor value is displayed with Text Label and digital readout along with a 64-bar Histogram that tracks values over user configured time interval from 15 seconds to several hours. Great for showing trends.
- **Bar Graph Display** - Sensor labels and values are displayed with a 24 segment Bar Graph from Min to Max. Up to 6 can be chosen for each of 8 possible groups. Great for comparing different sensors side-by-side.
- **Digital Gauge Display** - Sensor labels and values are displayed with a dial gauge with 8 segments from Min to Max. Up to 12 can be chosen for each of 8 possible display groups. Great for comparing different sensors side-by-side.
- **Large Dial Display** - Ideal for RPM and MPH display. Include digital readout and graphic fill around perimeter. Up to two can be chosen per display page.



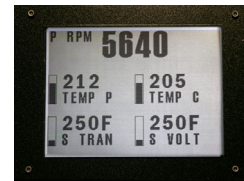
**Digital Dial Mode**



**Bar Graph Mode**



**Histogram Mode**



**Digital Data Mode**

**Specifications**

FEATURE	vGauge-G12A	vGauge-G12P	vGauge-G12S	vGauge-Remote
Display type	LCD / LED Backlight	LCD / LED Backlight	LCD / LED Backlight	PC/Laptop
Display resolution	5.7" diag 320X240	5.7" diag 320X240	3.8" diag 320X240	-
Display lines	(6 or 12) by 40	(6 or 12) by 40	(6 or 12) by 40	(6 or 12) by 40
Gauge display pages	8	8	8	8
MAX Gauges per Page	16	16	16	16
Gauge Modes	10 Text, Small text, Dial, Large Dial, Bar graph, Histogram, BIG Text	10 Text, Small text, Dial, Large Dial, Bar graph, Histogram, BIG Text,	10 Text, Small text, Dial, Large Dial, Bar graph, Histogram, BIG Text	6 Text, Dial, Large Dial, Bar graph, Histogram
Bar Graph resolution	24	24	24	24
Histogram resolution	40X64	40X64	40X64	40X64
Display update rate	2 per sec	2 per sec	2 per sec	2 per sec
NMEA update rate	16 per sec	16 per sec	16 per sec	16 per sec
Analog Inputs	3	3	3	12
Pulse Inputs (rpm/speed)	1	1	1	3
K-type thermocouple	-	-	-	2
NMEA Inputs	16	16	16	4
NMEA Outputs	-	-	-	16
Ports	USB/SERIAL	USB/SERIAL	USB/SERIAL	3 USB
Input types	Temp 0-400°F, Pressure 0-400 psi, Volt 0-30, Amp +/-100, Fuel Level 10-230 OHM, Pulse 0-12V	Temp 0-400°F, PS I 0- 400 psi, Volt 0-30, Amp +/-100, Fuel Level 10- 230 OHM, Pulse 0-12V	Temp 0-400°F, Pressure 0-400 psi, Volt 0-30, Amp +/- 100, Fuel Level 10- 230 OHM, Pulse 0- 12V	Temp 0-400°F, Pressure 0-400 psi, Volt 0-30, Amp +/-100, Fuel Level 10-230 OHM, Pulse 0-12V, EGT/CHT 0-1700F
Data logging	-	-	-	MemoryStick/PC
Alarms High/Low	16	16	16	16
Calibration Tables	4	4	4	12
Calibration resolution	256 X 6 character	256 X 6 character	256 X 6 character	256 X 6 character
Display Labels	16 X 8 character	16 X 8 character	16 X 8 character	16 X 8 character
Power	450 mA at 5V	450 mA at 5V	300mA at 5V	600 mA at 12V
Case Dimension	7.5" X 6.5" X 1.75"	7.5" X 6.5" X 1.75"	4.5" X 3.5" X 1.5"	6.5" X 4.5" X 1.25"
Case Material	Painted Aluminum	ABS black plastic	ABS black plastic	ABS black plastic
SMRP	\$695	\$495	\$395	\$395

\* Prices effective 1/2008. Prices and specifications subject to change  
\* Copyright 2008 Chetco Digital Instruments, Inc. All rights reserved.