



## Enterprise 6 Overview

e-Builder Enterprise 6.0 is an integrated, owner-centric capital program management solution that incorporates 13 years of industry-specific research and innovation into a scalable, flexible, and fast-to-deploy suite. Enterprise is a web-based platform to manage cost, schedule, and scope and provide a repeatable, predictable, and measurable way to improve business processes during planning, design, and construction. The result is less churn, increased productivity, accountability, and program control, along with increased efficiency, lower costs, and faster speed to market for quicker revenue generation.

Integrated Cost, Schedule, Process, and Document Management modules allow you to access and analyze key project information fast, centrally manage and track communications and files/documentation. The easy-to-configure reports help you quickly sort through project data in a way that is meaningful to the different stakeholders in your team.

## Primary Modules

### Cost Management

e-Builder's Cost Module provides financial control and audit features in a secure environment that help you improve how you manage your budgets across one project or your entire capital program. Use it to create and track budgets either during planning or construction, and conduct budget review and approvals online. The system is SAS 70 Type II certified, which also helps organizations comply with federal and state regulations (e.g., SOX). Quickly identify past and current costs, commitments, and changes as a project progresses. Built-in forecasting features enable you to accurately predict the cost-to-complete and cash flow needs. The Cost Module will also provide you with cost summaries across one or more projects with a couple of mouse clicks, and let you drill down into detailed information, including links to related documents (contracts, invoices, change orders). Used in the project planning phase, e-Builder acts as a budget creation and project prioritization tool, which allows you to leverage existing data from completed projects for accurate draft budgets.

Project Cash Flow						
Cash Flow Summary						
Current Cash Flow: Project Start Date: 2007, End Date: 2007						
Quick Cost Summary						
	Current Commitments	Actuals Approved	Actual Cost To Complete	Projected Cost Model		
Current Cash Flow	1,321,007.03	952,825.00	10,993.24	1,280,844.78		(45,728.03)
Line Item	Description	Projected Budget	Actuals To Date	Jul 2007	Aug 2007	
01	Sale & Development	86,215.02	200.00	0.00	0.00	
02	Design & Management	75,911.88	11,542.24	10,684.57	10,684.57	
03	Procurement	13,590.67	0.00	3,419.09	3,419.09	
04	Construction	885,346.22	0.00	0.00	0.00	
05	Building Fees	16,730.01	0.00	7,500.82	11,329.38	
06	Furniture & Equipment	52,526.66	0.00	0.00	0.00	
07	Information Systems & Phones	85,516.38	0.00	0.00	0.00	
08	Miscellaneous Costs	13,590.67	0.00	904.34	904.34	
09	Contingency	10,993.24	0.00	3,444.13	3,444.13	
10	Finance Costs	22,091.60	0.00	148.38	620.68	
11	Subtotal	1,321,007.03	12,292.24	26,794.80	19,744.80	
12	Schedule Percent Complete			1.98	1.78	

### Schedule Management

The collaborative Schedule Management Module integrates the power of CPM scheduling with the collaborative capabilities made possible with the Internet. Efficiently manage schedule and scope changes from a central location that is accessible by the different project resources online. Integration with common desktop scheduling systems (e.g., MS Project) let you import existing project files. After creation of a schedule you can track performance against a baseline, and the system automatically updates the critical path when your schedule changes and tasks are completed. Integrated Gantt reports give you a graphical view of your project's activities at a glance, including Project milestones that you define to enable benchmarking and tracking of key performance indicators.

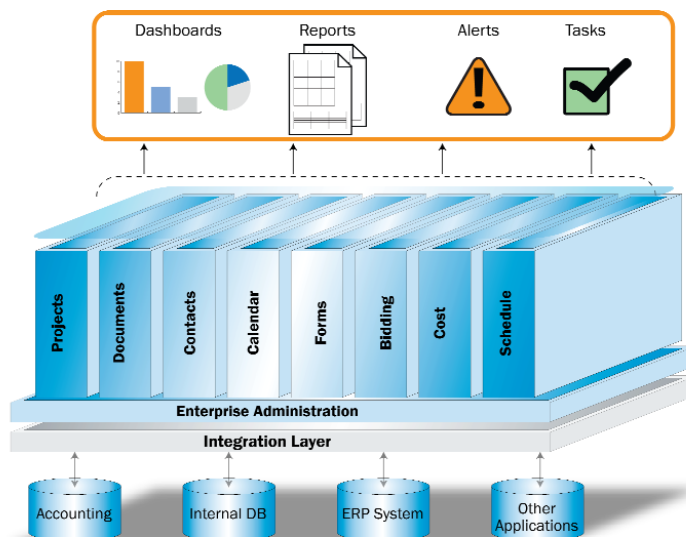
### Document Management

The Documents Module serves as the central repository of all your project files, including documents, drawings, photographs, CAD files, and more. Project teams benefit from improved communications and data exchange as well as improved collaboration. e-Builder tracks and records all of the information exchange (upload, download, email) occurring in the system. Plus the Document Module's built-in version control automatically renames documents and files upon transfer, and stores a copy of previous versions. You can view over 250 file types in e-Builder using the integrated viewer, which lets you preview and markup a PDF version without requiring or altering the source file and software. Leverage powerful integration capabilities with CAD software to facilitate the viewing, transfer,

and searching of drawings. Xref management capabilities automatically read sheet files for all xrefs and other associated files during upload/download; and give you the option to transfer the xref folder structure from your workstation into e-Builder. e-mail and fax (in and out) capabilities provide users with additional collaboration and communications options that increase use and adoption.

## Forms Module (Business Process)

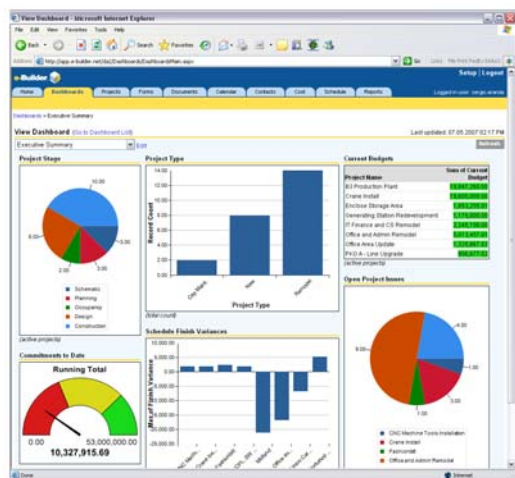
Your teams will appreciate the ease with which they can create and configure workflow forms that map to your internal processes. These electronic forms can be configured for the exchange and routing of budget and schedules for approval, issue management, change order requests and approvals, and more. Forms can have documents, files, and other forms attached for added adaptability to your processes.



e-Builder technology platform.

## Reporting

The integrated nature of the Cost, Schedule, Documents, and Process modules provides a flexible and efficient way to define and generate a broad set of reports with a few mouse clicks. Reports can be configured to include a broad range of metrics and can be project-specific or span across multiple projects. Each report contains links to additional details so you can quickly drill down into the data that makes up the reports.



Example of an Executive Dashboard

You can define standard reports for use across your organization using e-Builder-supplied templates based on industry best practices, or configure new ones based on your organization's reporting needs. Individual team members can also create and save their own reports for endless reporting possibilities. Reports can be emailed to individuals and groups at predefined intervals (daily, weekly, monthly).

For a visual representation of your project and program status, e-Builder provides a fully configurable executive dashboard for each user. These dashboards display data using charts, graphs, and gauges that you configure, and provide excellent visibility into the status of your projects and program key performance indicators.



www.e-builder.net