

**DRE Vetrec PDM** | Patient Data Management System

Monitor patients throughout your veterinary facility from a single location with DRE's all-in-one touchscreen central station

(800) 423-8413 | [www.dreveterinary.com](http://www.dreveterinary.com)





# All-in-one, wireless central station monitor

The Vetrec PDM lets you track vital signs and manage patient data from pre-op through discharge

- Wirelessly monitor vital signs of up to six patients throughout your facility from a single location
- The Vetrec PDM has a large, color touchscreen that is easy to use and provides immediate operation
- The compact Vetrec PDM is about the size of a 15" computer monitor and doesn't require a separate telemetry receiver
- Operates on highly customizable, easy-to-use software that is designed for Windows XP.
- The software features auto charting; full disclosure (96 hours); auto generation of alarm events; manual recording—ECG analysis; trends, charts and strips for arrhythmia; detection of ECG data; and color waveforms (20 colors). You can also schedule the printing of reports and connect the Vetrec PDM to your network.
- Automatically compiles and archives user-selected discharge reports. On networked systems, discharge reports can be sent in PDF format to hospital management systems and emailed to veterinarians.

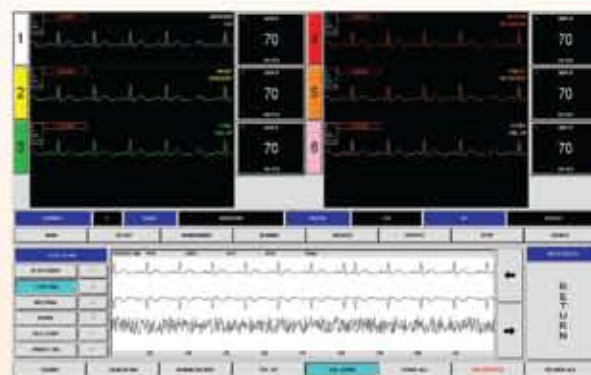
The Vetrec PDM software can be customized to meet the needs of your facility.

The software provides:

- Auto charting of patient vital signs
- Full disclosure (96 hours)
- Auto-stop generation of alarm events
- Manual or automatic strip recording with ECG analysis
- Ability to schedule the printing of reports
- Trends charts and strips with arrhythmia detection of ECG data

## Seamlessly integrates with up to six DRE Waveline *Plus* vital signs monitors

The Vetrec PDM monitors, displays and stores information sent from up to six Waveline *Plus* vital signs monitors in real time. A wireless transmitter that attaches to the back of the monitor provides a direct link to the Vetrec PDM. This makes the monitor **portable through pre-op, surgery and post-op.**



### Easy-to-use touchscreen interface

The compact Vetrec PDM's touchscreen allows you to review, edit and enter patient information while you observe all patients in the system.



# DRE Telemetry Solutions

Central Station Monitors

Equipment for the way *you* operate.

Also available

The flexible **DRE Vetrec VST** provides complete monitoring solutions for ICU, O.R. and surgery facilities.

- Available with up to 16 channels that support any combination of portable ECG transmitters and DRE Spectra AG5 bedside monitors
- Operates on highly customizable, easy-to-use software that is designed for Windows XP
- Network ready
- FDA-approved and operates within federal guidelines for medical equipment



## **DRE Waveline Plus** Seamlessly integrates with the Vetrec PDM & Vetrec VST

- Upgradable monitor with a maximum of seven parameters
- High resolution 10.4" (diagonally) color TFT display
- Multi-lead ECG monitoring
- 24-hour graphical/tabular trends with zoom facility with separate trend for storing
- Graded and color-coded alarms with audio visual indicators
- Measures ECG, respiration, NIBP, SpO<sub>2</sub>, Temp, EtCO<sub>2</sub> (optional)



## **DRE Spectra AG5** Seamlessly integrates with the Vetrec VST

- Large, electroluminescent, high-definition, flat panel display
- Up to ten-channel selectable waveform display
- Programmable audible and visual alarm limits
- Up to 96 hours of trend information
- Five minutes of real-time waveform history for onscreen review
- Memory/Recall: Digital readouts of up to 250 patient readings
- Standard with ECG, EtCO<sub>2</sub>, N<sub>2</sub>O, O<sub>2</sub>, 2BP, CO<sub>2</sub>, SPO<sub>2</sub> saturation, NIBP, temperature, respiration, anesthetic agents, and printer

