

Duplium

SUPPLY CHAIN MANAGEMENT



Our Supply Chain Management Solutions enable you to gain a strategic advantage over your competitors, increase your operational effectiveness, and gain cost efficiencies.

www.duplium.com

Getting your vision to market.



US Headquarters
2029 Westgate Drive, Suite 120
Carrollton, TX 75006
USA
Toll Free: (800) 928.2018



Canada Headquarters
35 Minthorn Boulevard
Thornhill, ON L3T 7N5
Canada
Toll Free: (800) 819.0701



Duplium

SUPPLY CHAIN MANAGEMENT SOLUTIONS

Duplium offers a wide array of Supply Chain Management Solutions. From Pick-Pack-and-Ship direct to consumer Fulfillment, Pick-Pack-and-Ship direct to retailer Fulfillment, E-Commerce, Warehousing, Inventory Management and Programs, Kitting & Assembly, Mail Shop Services, and more.

Our Supply Chain Management Solutions enable you to gain a strategic advantage over your competitors, increase your operational effectiveness, and gain cost efficiencies.

Duplium's Supply Chain Management solution will help you:

- ✓ **Get your product to market faster.**
- ✓ **Give your customers rapid and efficient order fulfillment.**
- ✓ **Service your customers' orders with accuracy.**
- ✓ **Track and evaluate your fulfillment program.**
- ✓ **Make your budgets go further.**
- ✓ **Give you the peace of mind that comes with scalable resource management.**
- ✓ **Provide you with a simple turnkey solution that meets all your fulfillment needs.**
- ✓ **Provide you with a product that keeps ahead of industry, customer, market trends, and technological advancements.**



Direct-to-Retail Shipping with EDI Capabilities

Your connection or ours we, can fulfill Retail EDI orders to:

WAL*MART



Cabela's



Fry's
ELECTRONICS



And Others

Pick-Pack-and-Ship Fulfillment

Today's business climate dictates that companies do more with less. To achieve this, a smart solution is to outsource your non-core competent practices, such as fulfillment. Duplium can help you reduce your fulfillment costs, and eliminate unnecessary infrastructure costs you would normally incur.

- **RF Scanning to protect against human error**
- **Variety of order-taking methods: EDI, FTP, XML, HTTP, Fax**
- **Same day shipping**
- **24/7 online inventory access**
- **Dedicated customer service**
- **Scalability**

E-Commerce

Not only do we have the back end fulfillment solution to support you, but we can also support your front end needs. Have a product and need the website store set up, no problem we can have you up and running in a day. We can handle everything from the store to the merchant account to the payment gate way, or we can handle just the store and the back end fulfillment. Our E-Commerce offering can be tailored to fit your needs.

- ✓ **Webstores**
- ✓ **Payment Gateways**
- ✓ **Merchant Accounts**



Inventory Management

- System-Directed Put-Away
- System-Directed Cycle Counting
- RF Technology
- Multiple Storage Methods
- Integrated Order Management and Warehouse Management Systems



Shipping and Transportation

- Relationships with all major carriers
- Favorable rates
- Integrated multi-carrier shipping system
- Rate shopping
- Track and trace



Reverse Logistics (Returns)

- Single location of returns.
- Single location of refurbish/repacking.
- Single location of liquidation/disposal of merchandise.
- Product testing and disposition.
- Instant availability of first inventory for shipments and backorder processing.
- Quicker credits to customers.
- Protect customer acquisition investment.
- Increased visibility on return statistics through comprehensive reporting.
- Reduce shipping and handling through consolidation.
- Increased advanced notification of the financial impact of returns allows you to focus on your core competencies.



Assembly Services

Duplium offers a wide range of assembly services. Whether you have complex kits with customer needs, or your packing needs are more along the traditional, we have the right solution for you. Duplium has automated equipment to cost effectively package many standard items. Duplium also has a large production staff to handle all sorts of hand packaging/kitting needs. Whether your company need 50 marketing kits assembled or 50,000 high tech electronic kits, we can handle it with our large experienced staff.

- Automation
- Hand Assembly
- Serialization
- Kitting
- Customization



Lettershop Services and Postage Optimization

- Auto Collation and Insertion
- Metering
- Sealing
- Shrink-Wrapping
- Poly-Bagging
- Hand Assembly
- Bulk Mail / Direct Mail
- First Class Mail
- Personalized Letters with Scanned Signatures
- Laser-Printed Sheet Labels
- Laser-Printed Envelopes
- Label Creation

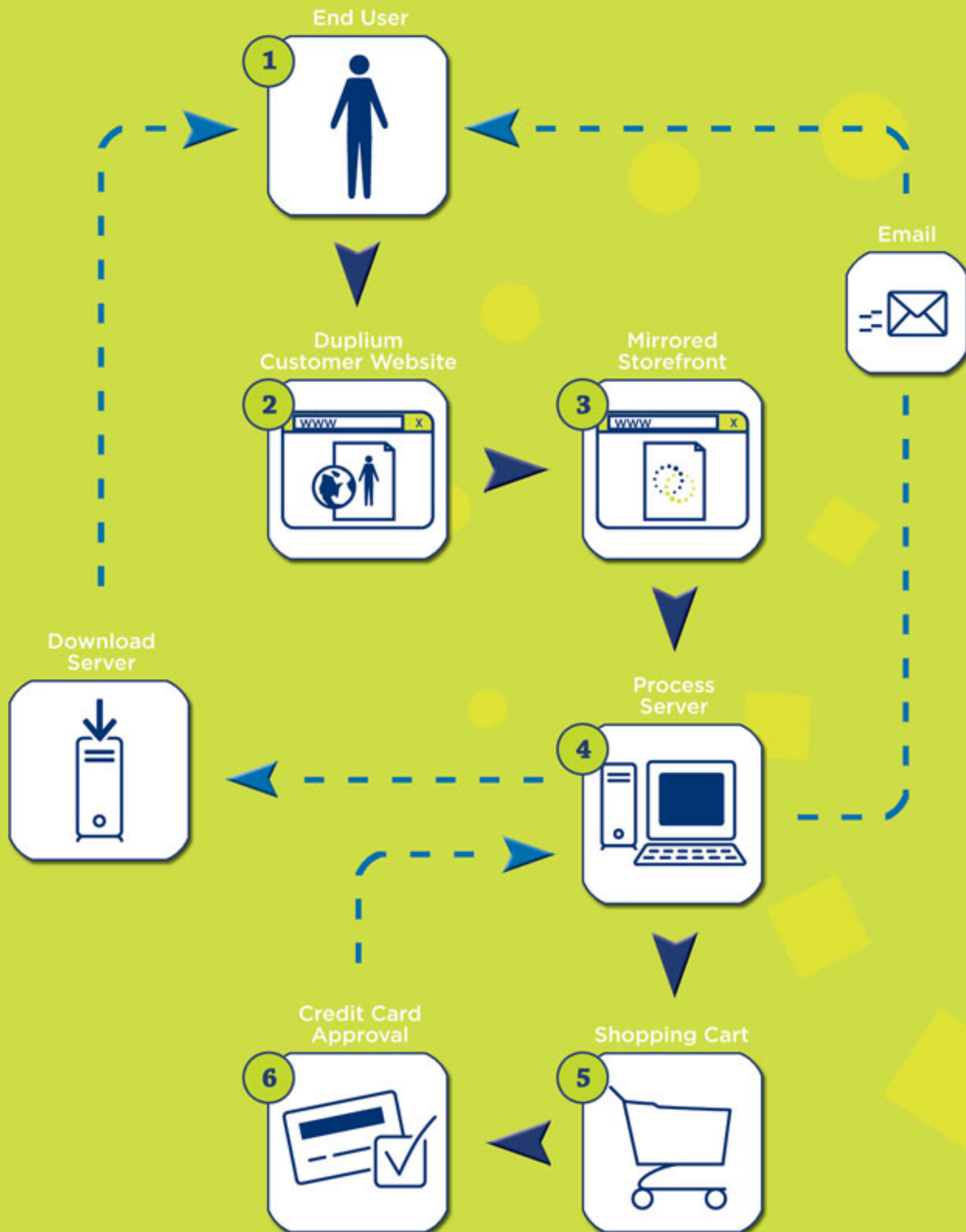
Marketing Promotions

- Pick and Pack
- Collateral Assembly
- Promotion Literature
- E-Commerce Fulfillment
- Consumer Promotions
- POS/POP Fulfillment
- Business-to-Business Promotions
- Kit Assembly and Custom Packaging
- Rebate Coupon Processing
- Contest and Prize Fulfillment
- Secured Warehousing



E-Commerce Process

End user logs onto Duplium customer's website to purchase and download digital product. The customer's storefront is managed by Duplium.



Fulfillment Process

Orders are entered from sources: EDI, FTP, XML, HTTP, Phone, Fax.

Order Entry

1



Address is verified and processed through Duplium Fulfillment System. Labels for pick, pack, and ship are produced.

Product Scan

3



Product is picked from inventory and scanned for verification against the order.

Product Pick

2



Packing Slip

4



Waybill

5



Ship Scan

6



Packing slip accompanies each product and a waybill is generated and scanned against the order for shipment confirmation.



LOGISTICS STUDY:

and the Dallas/Fort Worth and Toronto Greater Metropolitan Area as a Supply Chain Solution Headquarters for you!

Sky-rocketing freight cost, the need to deliver products to the marketplace fast and cost effectively, has made choosing your supply chain management partner an important part of every company's decision-making process.

As manufacturers and retailers search for ways to get products to market quickly at the lowest possible cost, the location of distribution centers has emerged as a critical decision point. Companies that carefully examine the facts are finding that Duplium Corporation of Dallas/Fort Worth (DFW Metro) and Toronto Greater Metropolitan Area (GMA) offers significant advantages for regional, national, and international distribution.

Whether your company needs fast and efficient **Retail Distribution**, or **Direct-to-End User Distribution**, Duplium has a Supply Chain Management Solution for you. The services include: **Pick-Pack-and-Ship Fulfillment, E-Commerce, Warehousing, Assembly & Kitting, JIT Inventory Programs, Vendor-Managed Inventory Programs, In-House Mailings Services**, and more.

CENTRAL LOCATIONS

Dallas' location near the geographic heart of the United States makes it an efficient distribution hub. It is also at the center of North America's four major business centers: New York, Los Angeles, Mexico City, and Toronto. Toronto is the hub of product distribution within Canada, as well as a major service provider to the Northeast US market place.

- From Dallas, 93% of the U.S. population can be reached via truck within 48 hours and 37% can be reached within 24 hours (U.S. DOT).
- 79 major U.S. markets can be reached overnight by truck or rail.
- DFW Airport gives access to 95% of the U.S. population within 4 hours.
- From Toronto, 65% of the Canadian Population can be reached via truck with in 48 hours, while also being able to service major business centers like New York, New Jersey, Michigan, Pennsylvania Chicago, Indiana, and Massachusetts 45% of the US population within 24 hours. Thus, between Dallas and Toronto, approximately 82% of the US population can be reached within 24 hours overnight truck shipping.

FACT:

82% of the US and Canadian Population can be served within 24 hours ground freight.

TEXAS OFFERS LOWER OPERATING COSTS

The Dallas/Fort Worth Metroplex has the lowest distribution costs to the top 50 U.S. consumer markets of any major U.S. city (CF Lynch & Associates).

- Warehouse net rental rates are among the lowest in the nation.
- Business costs are lower than any other major U.S. metro area (Economy.com).
- The state and local per capita tax burden is 19% below the national average.
- Infrequent weather-related delays increase operational efficiency.

INFRASTRUCTURE

Both the public and private sectors have invested heavily in DFW Metro and Toronto, Ontario Canada to create one of the nation's top transportation networks. The regions are home to many logistics service providers, including warehousing and distribution companies, freight forwarders and customs house brokers. By outsourcing, shippers can serve this important market with no significant capital investment.

- More than 850 motor carriers operate out of DFW or Greater Metropolitan Toronto Metro and most major North American common carriers have terminals in both Dallas and Toronto.
- According to the Texas Transportation Institute, the Dallas/Fort Worth area has a congestion rating that is below Houston and Atlanta, and well below Chicago and Los Angeles.
- Three major rail lines and eight intermodal hubs make the region one of nation's top intermodal transportation centers.
- The nation's best regional airport network includes:
 - DFW Airport, the 11th largest cargo airport in U.S.
 - Pearson International, the 12th largest cargo airport in North America.
 - Alliance Airport, the nation's first master-planned industrial airport.

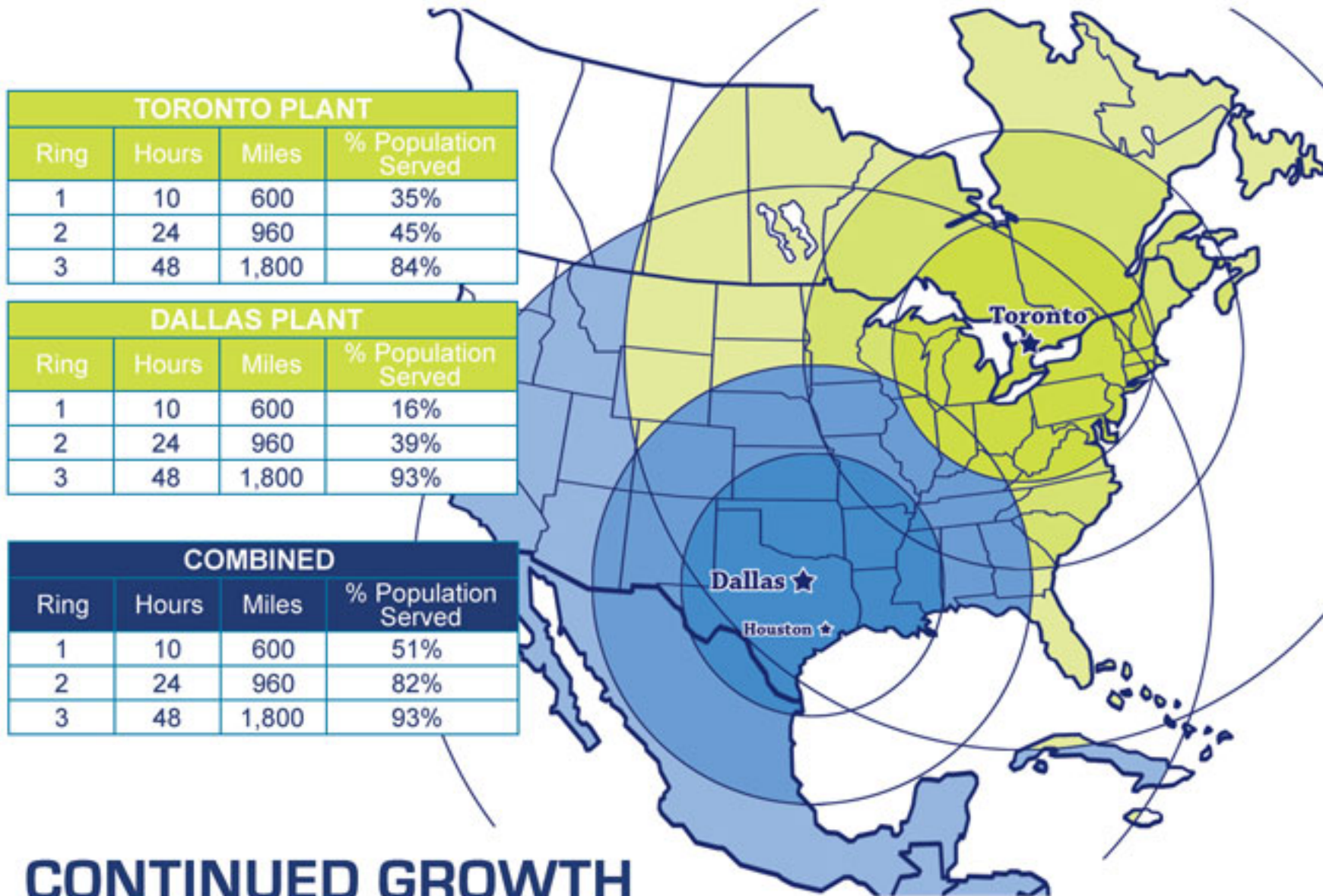
Hundreds of companies have relocated their headquarters or main distribution facilities to DFW Metro & Toronto GMA, including Blockbuster, Exxon Corporation, GTE, Nokia, J.C. Penney Company, Inc., AMD, Nortel, IBM, Research In Motion (Blackberry Phone Developer).



HUB FOR IMPORT-EXPORT ACTIVITY

Texas is the top exporting state in the U.S. (Texas Manufacturing Assistance Center) with significant volumes moving to Mexico and its population of more than 100 million. Since NAFTA, trade between Dallas/Fort Worth and Mexico and Canada has more than doubled. Much of the increased imports from Mexico come to and through Dallas via I-35 – the NAFTA Superhighway. In addition, DFW Metro serves as a distribution point for international imports flowing through the Port of Houston – ranked first in the U.S. in foreign waterborne commerce. Toronto is the top Exporting City in Canada and in the Top Ten in North America. Toronto has direct easy access to rail covering North America, sea through the Great Lakes and St. Lawrence, and has direct access to some of the largest US markets via ground truck shipping.

- DFW Metro has four Foreign Trade Zones where foreign and domestic goods can be stored, assembled, manufactured or exhibited for sale without payment of duty and excise taxes.
- Some local warehousing and distribution companies are located within Freeport Zones, offering significant tax benefits.



CONTINUED GROWTH

To improve logistics costs and service, it helps to be close to your customers. Many of these customers, whether businesses or consumers, are moving to the Dallas area, drawn by the region's warmer climate, lower cost of living and job opportunities. This trend is expected to continue.

- The population of the Dallas/Fort Worth Metroplex will grow from 5.2 million in 2000 to 7.9 million in 2030 (U.S. Census Bureau). The population of GMA will grow from 3.5 million in 2000 to 5.2 in 2030. (Statistics Canada)

VIRTUAL SUPPLY CHAIN MANAGEMENT

We provide our clients a web interface that allows them to view their inventory raw and finished goods, track inventory movements and levels, be notified via automatic email alert when inventory levels hit certain lows, view/track orders, shipments, freight costs, fast- and slow-moving products, run reports to assist with accounting functions, track web sales, and much much more. It's like having your own warehouse at your fingertips.

SHIPMENT QUERY

View and track orders and shipments

Direct links to online tracking

INVENTORY QUERY

View and track real-time inventory

SHIPMENT FREIGHT QUERY

Track and evaluate your freight costs

You can be anywhere in the world at any time and your warehousing and product information is as close as the nearest internet connection. **Call us now for a FREE DEMO DVD.**

Duplium Corporation has been around since the early 80's.

In the 25 years of doing Business in North America, Duplium has become a specialist in assembling, kitting, distributing, and even manufacturing products. Software, Hardware, Electronics, Cellular, MLM, Religious Organizations, are some, but not limited to, industries that Duplium services. If your company is looking at Supply Chain Management, as a possible way to improve efficiency, please contact us to discuss a program we could put in place for your company's individual needs--big or small.

why Duplium?

✓ **25** years of **experience**

✓ strategic **warehouse** location

✓ in-house **SERVICES** including:

- *Printing Digital and Offset*
- *Assembly/Kitting*
- *Web*
- *E-Commerce*
- *Optical Media Replication*
- *Mailing Services*
- *Retail EDI Capabilities*
- *Nintendo Certification*
- *ISO 9000-2001*
- *Warehousing*
- *Shipping*
- *Receiving*
- *RMA*
- *Inventory Management Programs*
- *24/7 Online Inventory Visibility*
- *Speed In by 2 Out Same-Day*