

# New Jewelry Collections › *FALL 2008*



## *Passionate Purples*

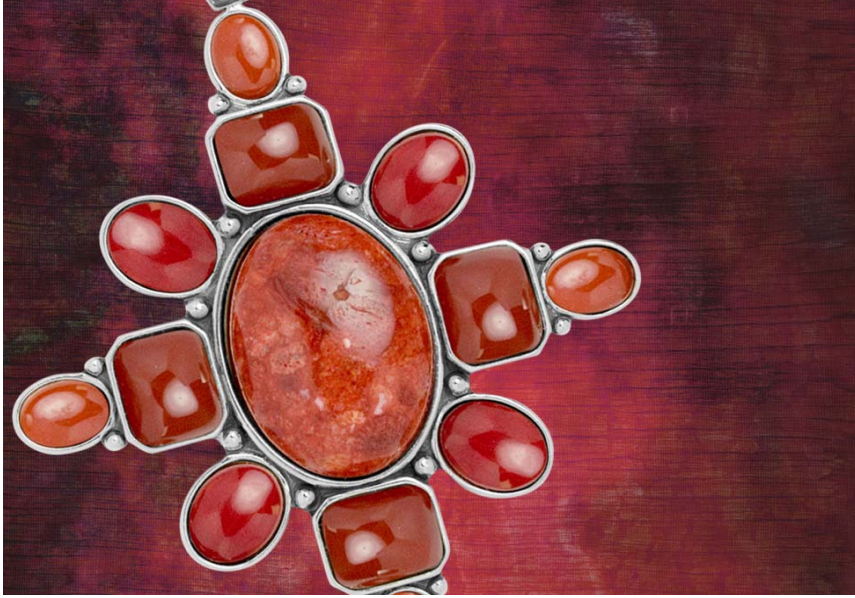
› Regal jewel tones continue to play an important role in eveningwear, with purple being the most distinctive. These vibrant colors add depth and vigor to any wardrobe. Complimenting the most important neutral of the season, gray, these purples offer the perfect finishing touch.

› Bold sterling silver details frame natural gemstone cabochons, and chunky torsades and statement necklaces round out this collection. For the first time, we're introducing a cast of unique gemstone players in the form of dyed purple jade and unusual crazy lace agate.

› This monochromatic palette is anything but monotonous – layer on the most luxurious strands of natural stones in bold, statement-making looks. Pair this fabulous collection with blues, purples, and blacks with hints of neutrals, camels and charcoals as the base. A touch of brights add even more personality to this palette. See the color palette above for matching ideas!

› Retails from \$49 to \$279

# New Jewelry Collections › *FALL 2008*



## *Fiery Reds*

› Shades of red are an important look straight off the runway, and rich fiery hues are created here in various red and orange natural gemstones. Spicy pumpkin and ochre shades add a touch of softness to this energetic palette and compliment the warm brown neutrals of the season.

› Red gemstones in shades ranging from raspberry reds, orange-red, bright red coral and deep burnt red are displayed in multi-strand chunky necklaces, bold beaded bracelets, and interspersed with silver twist tube beads. Twist rope detailed hoops and chandelier earrings are casually elegant when accented with natural stones.

› Reds have a renaissance flair, complimenting everything from burgundy to poppy. These richer colors are then balanced by the presence of a neutral palette of antique pinks, beige and black. Have fun and mix up your look with lots of your favorites, like turquoise, plum, maroon or the many shades of navy and indigo. See the color palette above for matching ideas!

› Retail from \$55 to \$299



# New Jewelry Collections › *FALL 2008*



## *Gorgeous Greens*

› Go green with natural, organically-shaped gemstones and recycled sterling silver. This collection is created in honor of the fashionable, environmentally conscious jewelry wearer. Grey brown is a core neutral and mossy green works well with this foundation color.

› All new gemstones in earthy greens and coffee tones come to life in this bold beaded collection. Find apple-green lime chrysoprase, swirling green opal, angelic serephinite and rich coffee jasper. Create a jewelry wardrobe with bold cabochons as the centerpiece of sculptural sterling silver pendants and bold right hand rings.

› Brighten up your wardrobe with bold beaded necklaces, chunky bracelets, statement making pendants and bold right hand rings. "Gorgeous Greens" pairs perfectly with sage green, coffees, neutrals, browns, mossy greens, warm grays and luminous limes. Collectible pendants, for those who wanted to make an even bigger statement, can be paired with earrings in hoop, chandelier or linear styles. See the color palette above for matching ideas!

› Retailers from \$35 to \$305



# New Jewelry Collections › *FALL 2008*



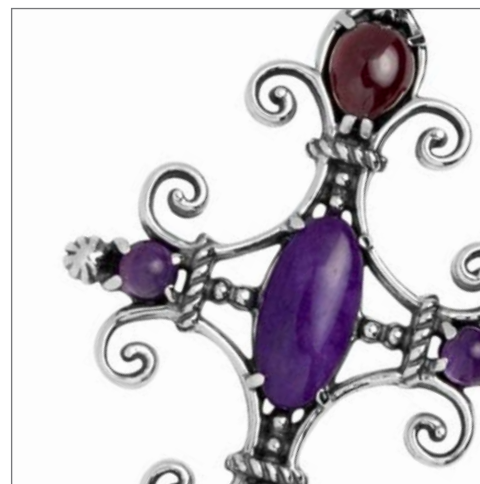
## *Fabulous Fuchsia*

› Featuring a bright, confident appeal, fuchsia is related to the regal purple trend, but reflects an edgy quality that its quiet cousin lacks. Steel grey neutrals compliment this bold look well, and serve as a backdrop for layering. Purple and pink undertones are a flattering combination and add energy to this collection.

› The organically-shaped gemstones returning here are pink rhodonite, shadow ruby and reflective black agate. Accompanying these favorites are new discoveries including purple and fuchsia jade, crazy lace agate and freshwater pearls for a touch of elegance.

› “Fabulous Fuchsia” showcases a range of rich and confident colors in bright to berry hues. This color story is designed to work with any of the most current styles and trends. Pair multi-strand necklaces with a blazer and blouse at the office, and transition seamlessly to evening in a figure flattering black dress and a bright neckline of colorful stones. See the color palette above for matching ideas!

› Retailers from \$39 to \$299



# New Jewelry Collections › *FALL 2008*



## *Earth & Sky*

› The simple beauty of the sky and earth inspired this collection. So many people take comfort in nature as a refuge from our busy world, and “Earth and Sky” displays a calming color palette to reflect this trend. A brooding storm or the rich soil of the earth can be found in the hues presented here.

› This mix of shades and textural natural gemstone beads create a rich backdrop for sculptural sterling silver. Cool blue chalcedony and kyanite combine with rustic picture jasper and smoky quartz to create a waterfall of subdued natural stones.

› The larger-than-life looks in this collection pair perfectly with denim, taupe, beige, browns, lilac, or any earth-toned favorite. Your darkest jeans and a crisp white blouse go from ordinary to exceptional with the addition of a three-strand illusion torsade and matching bracelet. Casually elegant, you’ll find a match in any of your everyday favorites. See the color palette above for matching ideas!

› Retailers from \$59 to \$295



# New Jewelry Collections › *FALL 2008*



## *Spicy Reds*

› Spicy reds are softened by warm-toned orange gemstones, mimicking a popular backdrop look for fall. Not just an accent, amber reds are blended here with brass and sterling silver, creating an unusual group of tones that match the warm browns and oranges so popular for fall.

› Beaded necklaces transform into torsades, with one, two and three-strand variations. From bold and chunky bracelets to statement-making earrings, these silhouettes scream go bold or go home! Warm gemstones, including multi-colored mookaite, gold-flecked muscovite and golden amber, are the basis for this unusual but flattering color palette.

› Bold looks get you noticed, whether your style is slimming long layers or an attention-grabbing neckline of chunky gemstone beads. The nature of neutrals is the beauty of accessorizing each and every color in your wardrobe... shades of sand, beige, off-white, and gold are just a start. See the color palette above for matching ideas!

› Retails from \$39 to \$339



# New Jewelry Collections › *FALL 2008*



## *Tempting Teals*

› With the ocean theme as an important trend, maritime colors are growing in popularity. Blue is the most popular palette for gemstones right now both on and off the runway, and is showcased here in a bold designer collection. Serene and sophisticated, the teal blue of the Caribbean anchors this soothing color palette.

› Sculptural sterling silver embraces bold cabochons in statement-making pendants and attention grabbing rings. Linear, hoop, chandelier or button style earrings are the perfect finishing touch. Find your favorite turquoise, deep teal apatite, unusual crazy lace agate and sophisticated freshwater pearls.

› Bright teal blues lend an enthusiastic pop of color to gray, basic black, browns, warm blue-greens, mustard yellow sand even energetic reds. Peacock-colored gemstones coordinate with work wear to casual wear and are a staple color for your complete jewelry wardrobe. See the color palette to the left for matching ideas!

› Retails from \$69 to \$349

