



## KEY BENEFITS

- *Pre-scripted Transit-related tabletop exercises* designed into WebEOC *ST*
- *Crisis preparation for different scenarios*, including commuter rail, freight rail, intercity train, trucking<sup>1</sup> and transit<sup>1</sup> incidents
- *Simulations for any size agency*, from a few people to dozens of participants
- *Multiple locations and/or properties can participate in the same exercise*, no longer requiring participants to travel to one central site
- *Easy to use and meets industry requirements and guidelines*, including those from the Federal Transit Administration
- *BCG provides a single source for crisis management solutions*, from simulated exercises to consulting services and software implementation.

## EMERGENCY RESPONSE EXERCISES AND DRILLS

**BCG prepares the Surface Transportation sector for the unexpected – with simulated, localized drills built into its WebEOC<sup>®</sup> ST software**

### DRILLS SAVE LIVES, PROTECT PROPERTY

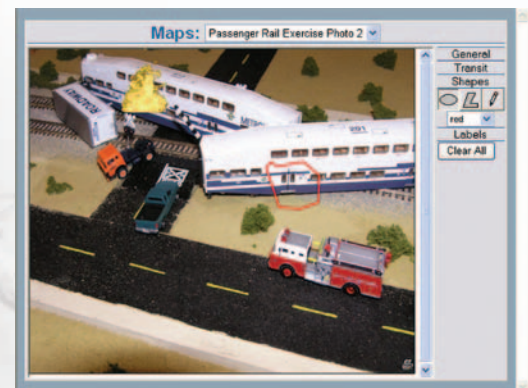
In the Surface Transportation industry, responding to disasters and emergency events requires precise planning to ensure the fastest response and recovery possible. Drills are challenging yet necessary for private transportation companies, public transit agencies and at all levels of government.

To simulate realistic scenarios and at less cost than conducting traditional tabletop and full-scale exercises, Business Contingency Group (BCG) has built emergency drills into WebEOC *ST*, the leading Crisis Information Management Software (CIMS) for the Surface Transportation industry. The pre-scripted Transit-related “tabletop” exercises include scenarios for a commuter rail incident, freight rail incident, intercity train incident, trucking incident<sup>1</sup> and transit incident<sup>1</sup>.

The WebEOC *ST* drills are conducted as “tabletops” or can supplement full-scale exercises. The tabletop simulations,

designed by BCG, are based on potential real-life scenarios – with the goal to improve emergency management capabilities during and after the event. Agencies of all sizes can use the software to learn how to best prepare for emergency situations that are specific to their local community or regions.

Transit Demo	
-Significant Events-	
173	Engine 28 on scene. Confirming crash, the derailment of three (3) cars and numerous survivors milling about. Requests information on passenger loads. Train is a North bound train. Roadway tractor-trailer is also involved
01/09/2008 17:52:07	Highway Rail Grade Crossing Collision
172	Pacific Coast Transit confirms that one of their trains (Train # PC321) was involved in a collision. Train crew is reporting passenger injuries and that they hit a vehicle at the crossing with SR 107
01/09/2008 17:50:26	Mass Casualty
174	Citizen traveling along US 292 states there has been a train derailment near where SR 107 crosses the rail line. It appears to be a passenger train. Engine 28 is responding along with Police.
01/09/2008 17:46:08	Derailment



<sup>1</sup> To be released in future version

## **SAVE COSTS IN LOCALIZED EXERCISES AND TRAINING**

Typically, drills involve a significant amount of planning and costs on the part of a transit system, and with limited budgets and time constraints on personnel, there are often not enough resources to conduct as many drills or to get as many people involved as agencies would prefer.

The WebEOC *ST*-based drills – which can be run online – allow agencies to expand the reach of traditional tabletop and full-scale exercises that can be accessed from multiple locations by dozens of people simultaneously. WebEOC *ST* drills allow multiple agencies to participate interactively and in real-time.

## **WEBEOC *ST* – LEADING PLATFORM FOR REAL-WORLD EMERGENCIES AND SIMULATIONS**

Designed for the Surface Transportation industry, WebEOC *ST* is a state-of-the-art software platform developed by BCG as an add-on module for the industry-leading CIMS – WebEOC, developed by ESI. As the world's first Web-based emergency management communications system, WebEOC – on which the *ST* module resides – is designed to deliver real-time emergency information sharing.

In WebEOC *ST*, the Simulator tool is used for initial and recurring training or drills and exercises. Simulator provides agencies with the ability to construct scenarios that can be added to WebEOC *ST* and then run as needed in support of training objectives or exercise play. It can simulate inputs that would, in an actual incident, be generated by an entire cadre of emergency responders, while minimizing (during exercises) the number of support personnel needed for role-play activities.

With the WebEOC *ST* Simulator, the exercise controllers can:

- Develop system-generated inputs that are automatically injected at specified intervals based on E Time
- Develop contingency inputs whose E Times cannot be determined, but may be input later as exercise play unfolds
- Disable an entry from being posted
- Delay inject of a scheduled entry
- Selectively remove entries already posted to status boards
- Pause the simulation if drill play is temporarily suspended and then restart once drill play is again underway
- Generate hardcopies of the timeline
- Archive the exercise intact

In the drill scenarios, WebEOC *ST* can display messages, text, reports, graphics, maps, video and even live television pictures – in real time. New users can grasp its intuitive interface within minutes. Complete with a suite of default status boards, anyone – even non-technical users – can build customized Web-based electronic status boards on the fly.

## **ADDITIONAL SIMULATION FEATURES**

WebEOC *ST* expands on Simulator's capabilities with pre-scripted scenarios, localization capabilities and features that include automatically injected scenario messages, maps and diagrams, incident photos, and support material such as bill of lading and manifests. This provides the user with an extensive WebEOC *ST* Tabletop Exercise Library.

WebEOC *ST* drills can be customized to the organization or jurisdiction to provide a more realistic scenario to the participants. Master sequence of events lists (MSEL) and evaluation worksheets are also included.

## **BCG – ONESTOP CRISIS MANAGEMENT**

Business Contingency Group is one of the nation's leading hazard mitigation, preparedness, response and recovery organizations. With our OneStop approach to crisis management, we can deliver a full range of end-to-end solutions, consulting services and software products to communities, businesses and EOCs throughout North America and around the globe.

---

## **WE'RE HERE TO HELP**

With just one phone call, we can help you develop a comprehensive crisis management strategy. For more detailed information about how WebEOC *ST* and BCG can benefit your organization, call us today or visit our website.

---



ESI and WebEOC are either registered trademarks or trademarks of ESI Acquisition, Inc.