

Early Case Assessment & Analytics

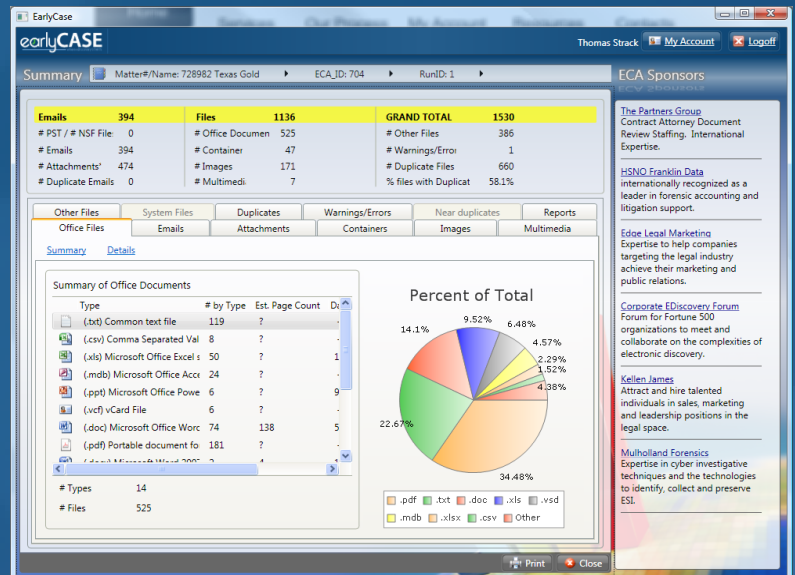
earlyCASE

where eDiscovery STARTS

earlyCASE is a web-based application, which runs on your local PC, and analyzes the electronically stored information (ESI) that your computer can access. earlyCASE provides an immediate eDiscovery analysis of your data and produces 15 high-quality eDiscovery reports which provide a summary of details on the data you actually have and how long it will take to process and review it, including an extensive 26(f) report for meet and confer. earlyCASE identifies duplicate documents and assists in developing filter and culling rules to dramatically reduce the amount of eDiscovery to be processed and reviewed. It supports multiple languages, extracts MetaData and generates hash values, detects duplicates and creates a local inventory database of documents and emails. earlyCASE is available through a free Basic version or a Professional version, which includes more features.

FREE Basic Version

ESI/eDiscovery Analysis of Your Data
 Web-based Application
 Processes Microsoft Exchange PST Files
 Extracts MetaData
 Supports Multiple Languages
 Creates Professional Reports, Charts & Graphs
 Creates Local ESI Inventory Database
 Assists in Developing Filter & Culling Rules
 It's Fast - Processes 20Gb per hour
 It's Secure - Data Never Leaves Your PC
 You Run It When & Where You Need It



Professional Version

All of the Basic Features PLUS:
 26(f) Meet & Confer Reports
 Generation of Hash Values (MD5 & SHA-1)
 Identifies Duplicates
 Processes Containers & Archives
 Extracts Attachment MetaData
 Analyze Unlimited Data for a Small Flat Fee

Get Started Today

- 1 Create a FREE Basic Account at www.earlyCASE.com
- 2 Launch the Application & Logon
- 3 Create a Matter and Analyze Your ESI. **It's That Simple!**