



LigoWave

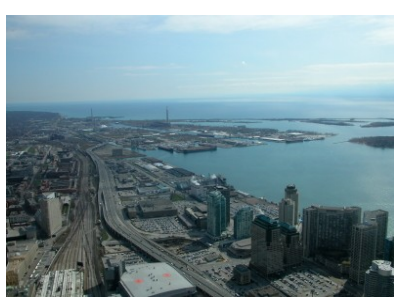
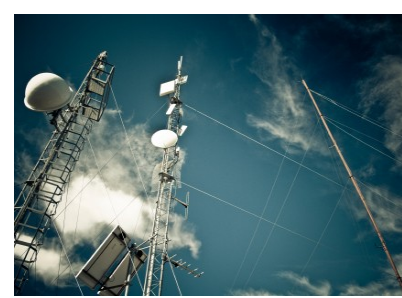
# LigoWave

## Point-to-Point Connectivity

Bridging **Uncharted** Boundaries







## Connect Reliably in an Unreliable World

The Ligowave PTP series of products is an industry-leading point to point platform operating in both licensed and unlicensed bands and is suitable for worldwide use. By combining industry-leading technology with many years of experience, LigoPTP products provide a secure, robust, and reliable connection even in the harshest environments – resulting in a product that just simply works. From mission critical backhaul applications, to connecting buildings together on a campus, to providing dedicated access to important customers, the LigoPTP products offer carrier class performance that is unmatched in the industry.

## Carrier-Class features Eliminate the Guesswork

LigoPTP products incorporate many advanced features that elevate the product line above its peers in the market:

- **Superior Radio Performance**—industry leading transmit power and receive sensitivity.
- **OFDM**—Provides robust links in near-LOS and non-LOS environments.
- **Adaptive TDD**—Adaptive time division duplexing allows bandwidth to be dynamically allocated in the direction needed, instead of locking the radio into static allocation.
- **High Packets-per-Second**—50,000 PPS results in full throughput with nearly any packet size.
- **Selective Repeat ARQ**—Only packets lost are retransmitted, translating into minimal throughput loss in noisy environments
- **AES Security**—Advanced Security mechanisms keep data safe and secure, at no additional cost.

## Frequency Flexibility for Every Application

The LigoPTP series of products is available in an unparalleled selection of frequencies covering almost every unlicensed band, public safety band, and lightly licensed band in the world. With products in the 900MHz, 2.4GHz, 3.5GHz (including 3.65GHz in the US), 4.9GHz, and 5GHz frequency bands, LigoPTP products fill a need for almost any application. In addition, there are no license keys to increase speed or complicated add-on features. Every capability, including the full throughput of the units, is included in the extremely competitive and cost effective base price.



# Be in the Know with Innovative Management Features

All radios in the LigoPTP series products can be managed remotely through Ligowave's RCMS system. This revolutionary and unique system allows provisioning, configuration management, and firmware management, as well as statistics reporting. Also, these products use a first-to-market Flex-based web UI which allows for extremely rapid and easy configuration. Another innovative feature found on the LigoPTP radios is a reset over ethernet using a special packet. This enables the radios to be reset from the ground once installed on towers or buildings saving time and money. All of these management features make the LigoPTP products a best in class choice.

## Reliability means Sleeping at Ease

Reliability is one of the most important characteristics of a radio platform. That is why we have taken extra steps to ensure that the LigoPTP products are one of the most reliable solutions on the planet. From the double lightning protection built into the radio to the solid, robust, IP67 rated enclosure, to the proven software platform, the LigoPTP series are ready for even the harshest environments.

## See Larger Profits Sooner



Return on investment using the LigoPTP series products are faster than ever due to the high capacity for data, voice, and video all at an extremely competitive price. By combining advanced innovative technologies, rock solid reliability, and industry-leading management features, the LigoPTP platform is able to pull far away from the crowd. These same features also allow for robust operation in the unlicensed and lightly licensed bands that require little or no license fees and waiting times. The LigoPTP products are also flexible enough to cover a wide array of applications such as leased line replacement, dedicated access, backhaul, video, campus deployments, and public safety applications, resulting in less training for staff, lower inventory costs, and maximized investment.

## Widest Frequency Selection on the Market

	PTP 2-Series	PTP 3-Series	PTP 4-Series	PTP 5-Series	PTP 900-Series
<b>Operating Frequency</b>	2.400-2.4835 GHz	3.3-3.7 GHz*	4.940-4.990 GHz	4.990-5.85 GHz*	868-928 MHz*
<b>Channel Size</b>	5/10/20/40 MHz	5/10/20/40* MHz	5/10/20 MHz	5/10/20/40 MHz	5/10/20 MHz
<b>Max TX Power</b>	250 mW	500 mW	250 mW	500 mW	350 mW
<b>Min RX Sensitivity</b>	-93 dBm	-93 dBm	-93 dBm	-94 dBm	-92 dBm
<b>Antenna</b>	N-Connector 19 dBi Panel	N-Connector 18 dBi Panel	N-Connector 19 dBi Panel	N-Connector 23 dBi Panel	N-Connector 13 dBi Panel
<b>TCP Throughput</b>	Up to 70 Mbps	Up to 70 Mbps	Up to 40 Mbps	Up to 70 Mbps	Up to 40 Mbps

\*Country Dependent



**Bridge your connection with us today!**

1440 Dutch Valley Place  
Atlanta, GA 30324  
Tel: 1-877-544-6928  
Fax: 1-866-893-8432  
sales@ligowave.com

[www.ligowave.com](http://www.ligowave.com)