



1.888.248.4900

US & Canada Toll Free Number

1.408.248.8960 Phone • 1.408.248.8961 FAX

www.avanu.com

## CAI Networks

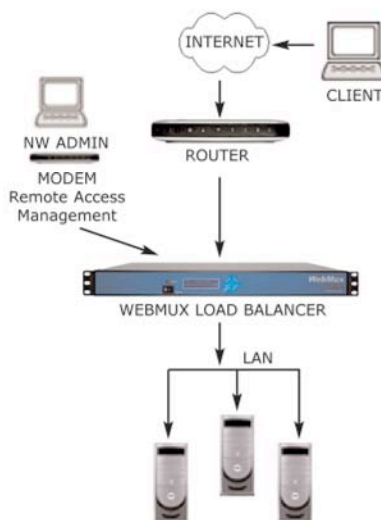
### WebMux™ Load Balancers

*Layer 2/3/4/5/7 Traffic Management and Load Balancing with SSL Termination for Local Network Environments*

The WebMux family provides high performance server load balancing to fit a wide range of requirements and offers one of the industry's lowest Total Cost of Ownership (TCO). WebMux's capability, flexibility, simplicity, and scalability lets you easily create and manage many pools, or farms, of servers, for a wide range of applications, including Internet Web, FTP, email, Microsoft® Office Communications Server 2007 & Office Live Communications Server 2005 (Tested & validated by Microsoft®), and Oracle® Application Server® 10g (Validated by Oracle).

WebMux Load Balancers are easily-administered network appliances that manage IP traffic to multiple servers on 10/100/1000 Ethernet LANs and multiple VLANs. Enhanced reliability and high availability of service is achieved through the use of a dedicated platform, a solid-state design with no spinning disks, and an optimized load balancing algorithm. This approach uses minimal overhead and requires no software interaction or other resource contention. The WebMux products are known for their ease of configuration and management (menu-driven LCD front panel, remote Web browser management supporting HTTP and HTTPS, as well as Telnet and SSH diagnostic capabilities). WebMux pricing includes a three (3) year factory product warranty (parts & labor), three (3) year firmware updates, and three (3) years technical support to ensure lowest TCO.

#### Standard Configuration



#### High Performance

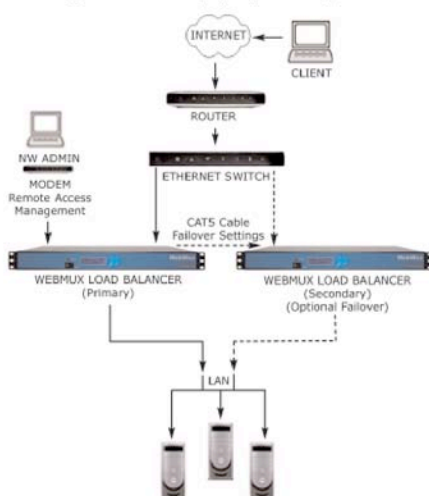
- Up to 4 GB per sec throughput
- Up to 200,000 transactions per second
- NAT (in-path), Direct Response (Out-of-Path) Transparent Bridge mode Configuration
- Up to 5,760,000 concurrent connections (NAT Mode; higher performance in Out-of-Path mode)
- Ultra-fast hardware platform
- Solid-state flash memory
- Built-in proxy function



#### High Availability

- Multiple VLAN for support of multiple subnets
- 802.1Q tagged VLAN trunking support for multiple VLANs
- Multiple ISP for multihoming HA capabilities
- Multiple Address/Port (MAP) (Intelligent failover of rich media applications and increased flexibility)
- Supports Spanning Tree Protocol enabled network switches to provide redundant path (Layer 2-3)
- IP, URL and cookie based load balancing (Layer 4-7)
- Supports unlimited number virtual servers
- IP server capacity increased by load sharing
- Failed server in the farm automatically bypassed
- Built-in high-level protocol checker makes sure the Servers are healthy
- Persistent connections via a unique routing algorithms
- Burst Activity Management (BAM™) minimizes traffic overloads of UDP/DNS client requests
- Dual configuration offering automatic failover

#### High Availability (HA) Configuration



#### SSL Acceleration

- Up to 6,000 Round Trip 1024 bit SSL Terminations per second (Most load balancers are based on RSA 1024 bit Operations only)
- Supports up to 32 Active SSL certificates

#### Enhanced Security

- Passes all IP traffic and block the most common attacks pre-firewalls or servers
- Provides several firewall features to ensure the integrity of your data
- Protects your server from attackers
  - Network Address Translation (NAT and SNAT)
  - Port Mapping and default Deny any connections
  - Denial of Service (DoS) protection
  - TCP SYN protection

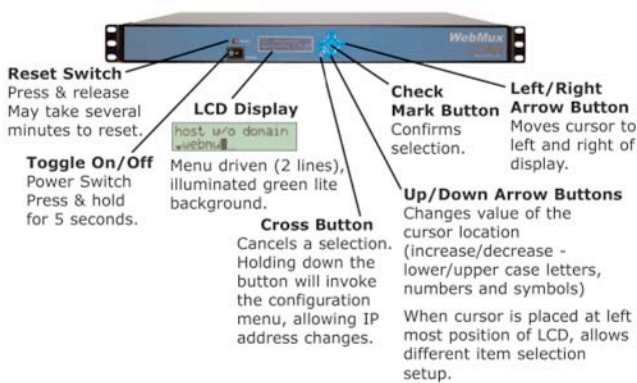
#### Expandable and Flexible

- Requires only one real IP address
- No limit on how many IP address can be used
- Scales to provide an easy and flexible upgrade path

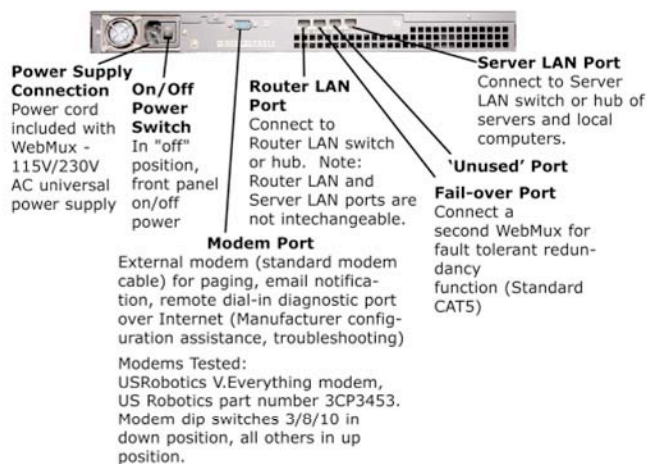
#### Easy Setup and Administration

- Management of the IP server pool is via a browser-based interface
- Can be configured in under 15 minutes with no training
- Remote configuration from anywhere that has secure IP connectivity
- Includes a front keypad interface and menu-driven LCD display

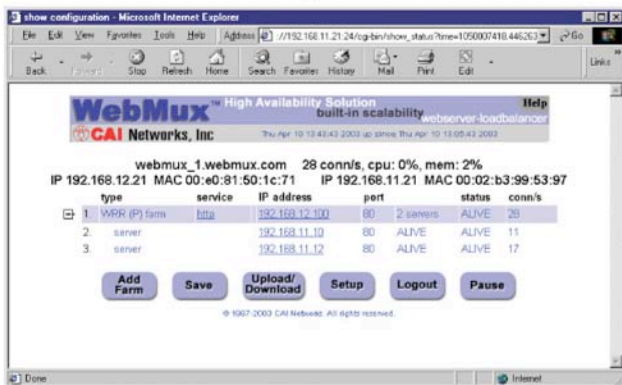
### WebMux Front (481S & 591SG Models)



### WebMux Back (481S & 591SG Models)



### WebMux Remote Management Brower Window



#### Footnotes:

- (a) NAT (in-path) mode (Higher performance in Direct Response/Out-of Path mode)
- (b) CAI-RSA3500 SSL Acceleration Card Required
- (c) CAI-RSA7000 SSL Acceleration Card Required
- (d) Contact AVANU for larger quantity
- (e) Contact AVANU for details

#### AVANU®

5205 Prospect Rd #135-143  
San Jose CA 95129-5304  
USA

1.408.248.8960 • 1.408.248.8961 FAX

Rev 0908b

PRODUCTS & PRODUCT SPECIFICATIONS SUBJECT TO CHANGE WITHOUT NOTICE  
Copyright © 2008 AVANU, LLC. All rights reserved.  
AVANU is a registered trademark of AVANU, LLC  
All other trademarks and registered trademarks are the property of their respective owner(s).

### US\$ Suggested Retail Price

#### Performance

	WebMux 481S \$3,999	WebMux 591SG \$5,999	WebMux 680PG \$22,899
Concurrent connections (Max) <sup>(a)</sup>	1,440,000	2,880,000	5,760,000
Transactions/sec (Max)	15,000	50,000	200,000
Throughput/sec (Max)	200 MBits	1 GBits	4 GBits
Internet Link Speed (Max)	2 x T3	1.5 x OC-12	1.5 x OC-12
Layer 7 and SSL Acceleration			
1024bit RSA terminations/sec (Round trip; Max)	120	250	4,000 <sup>(b)</sup>

Layer 7 Connections/s (Max)	10,000	70,000	144,000
SSL Certificates Supported <sup>(d)</sup>	32	32	32

#### Load Balancing Methods

Cookie content based	•	•	•
URL based	•	•	•
Round-robin	•	•	•
Persistent round-robin	•	•	•
Weighted round-robin	•	•	•
Persistent weighted round-robin	•	•	•
Least connections	•	•	•
Persistent least connections	•	•	•
Weighted least connections	•	•	•
Persistent weighted least connection	•	•	•

#### Traffic Management Methods

URL based content switch	•	•	•
Cookie based content switch	•	•	•

#### Fault Tolerance

Diskless design	•	•	•
Port aggregation	•	•	•
Failover via network connection	Optional	Optional	Optional
Failover via Ethernet link	•	•	•
Service-aware	•	•	•
Server-aware	•	•	•
Backup server	•	•	•

#### Security

Network Address Translation (NAT/SNAT)	•	•	•
TCP SYN protection	•	•	•
Address mapping	•	•	•
Port mapping	•	•	•
TCP DoS protection	•	•	•
DDos detection & protection	•	•	•
HTTPS/SSH management	•	•	•
IPv6 Ready	•	•	•

#### Topologies

Ethernet/Fast Ethernet	•	•	•
Gigabit Ethernet (1000Base-TX)	•	•	•

#### Device Support

Interface to switches	Gigabit x2	Gigabit x2	Gigabit x8
Virtual Servers (Max)	Unlimited	Unlimited	Unlimited
Real Servers (Max)	65,532	65,532	65,532
Bridge/Router Role In Network	•	•	•
UDP-based service support	•	•	•

#### Management

Secure web browser access	•	•	•
In service/Not in service	•	•	•
SNMP	•	•	•
Phone/Pager alarm notification	•	•	•
Email notification	•	•	•
Configuration access	•	•	•
Persistent connections	•	•	•
Port-specific services	•	•	•

#### Service Support

Product Warranty (Parts & Labor)	3 Years	3 Years	3 Years
Firmware Updates	3 Years	3 Years	3 Years
Technical Support (Phone/Email)	3 years	3 years	3 Years
24x7 Gold Premium Support	Optional	Optional	Optional
Overnight Exchange Unit	Optional	Optional	Optional

#### Physical

Rackmount 1U Form Factor	•	•	•
Power Consumption	120w	200w	400w
115VAC Current	2.5A	3.5A	5A
Heat Production	350BTU/H	550BTU/H	1000BTU/H
Power Requirements @50-60Hz	----- 95-130VAC or 195-235VAC -----		
Operating Temp Range	0-40°C	0-40°C	0-40°C
Rack mount chassis (19"x 14"x1.75")1U		1U	1U
Ship Weight	20 lbs	20 lbs	35 lbs

#### Compliance & Certification

Part 15, FCC (US), Class B (Canada),  
CE Mark (Europe), FIPS 140-2 standard,  
NIST (latest industry-standard Open SSL  
modules), RoHS

#### Other

30 Day Money Back Guarantee <sup>(e)</sup>  
(Subject to restocking fee)