

TOPEM® – Advanced TMDSC Technique

COLUMBUS, Ohio (April 21, 2009) – METTLER TOLEDO, the technology leader in Thermal Analysis, introduces TOPEM®—the latest advancement of Temperature Modulated Differential Scanning Calorimetry (TMDSC) for the DSC1.

This new multi-frequency modulated technique allows for complete separation of overlapping effects (reversing/non-reversing), very accurate quasi-static heat capacity, as well as investigation of the frequency dependence of physical transitions—a verification of your results.

DSC Offers Unsurpassed Sensitivity and Outstanding Resolution

The DSC1 with unmatched performance and perfect ergonomics, dramatically reduces analysis time. High sensitivity, excellent temperature resolution, perfectly flat baseline, and a robust design enable users to achieve performance characteristics unattainable with conventional metal sensor instruments.

The highest available sensitivity in DSC instrumentation means users will be able to detect possibly unknown transitions, which increases product safety. The amazing resolution of the DSC1 separates close-lying effects at higher heating rates up to 300°C/min resulting in drastically reduced analysis times. When the touch-free SmartSens infrared sensors are activated, users can open and close the furnace without touching any part of the instrument or disrupting a measurement. This saves time and prevents possible contamination, which is a major step to improving operator and process security.

**DSC1****Simply Reliable**

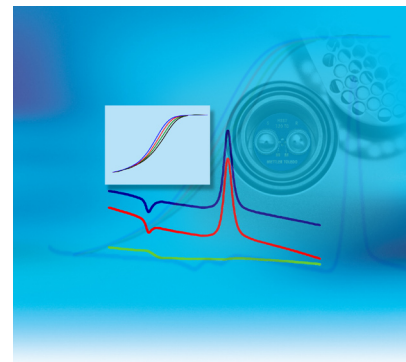
In the current economic environment, productivity and sample throughput are now more important than ever. An earmark of our current product portfolio is clearly the productivity increase gained from the most reliable automation available. Automation is only as useful as it is reliable; with METTLER TOLEDO Thermal Analysis Excellence, dependable and worry-free measurements can be carried out 24 hours a day.

In addition, the fully modular instrument platform allows the user to upgrade the system at any time. This offers an incredible amount of cost savings through extending the useful life of the instrumentation.

About METTLER TOLEDO

METTLER TOLEDO is a leading global manufacturer of precision instruments. The Company is the world's largest manufacturer and marketer of weighing instruments for use in laboratory, industrial and food retailing applications. The Company also holds top-three market positions in several related analytical instruments markets and is a leading provider of automated chemistry systems used in drug and chemical compound discovery and development.

Additional information about METTLER TOLEDO can be found at www.mt.com.



TOPEM®
Temperature Modulated DSC Made Easy

www.mt.com/thermalexcellence

Visit for more information

METTLER TOLEDO

Shana Wheeler
Media Relations Manager
1900 Polaris Parkway
Columbus, OH 43240
(614) 438-4936
shana.wheeler@mt.com

METTLER TOLEDO

Michael Zemo
Market Manager
1900 Polaris Parkway
Columbus, OH 43240
(614) 438-4686
michael.zemo@mt.com