

Green Planet™ Extension for Companion - Practical PC Power Management

Successful PC Power Management

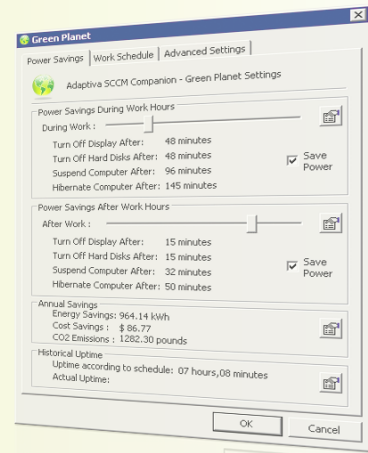
- Identify PC energy conservation opportunities and harvest energy
- Collaborate with end-users to establish optimal power policies
- Drive adoption through end-user awareness and increased visibility on user behavior

Reduce Cost

- Save \$25 - \$75 per PC annually
- Lower PC management and operational cost
- Report tangible savings by department or location

Increase Business Productivity

- PC's woken for user arrival, no disruption by updates during business hours
- Ability to defer shutdown if critical applications are running
- Users and IT have 24*7 access to PC's



10,000 PC's left on during non-work hours on average consume 2.5 million kWh, emit 1850 tons of CO₂ and cost \$262,800 annually. Enterprises implementing power policies face the following challenges:

- No visibility on where and when to harvest energy
- IT needs PC's on for software updates and distribution
- End-users are apprehensive about their machines being switched off
- Lack of end-user awareness on power management and lack of visibility on PC usage behaviour

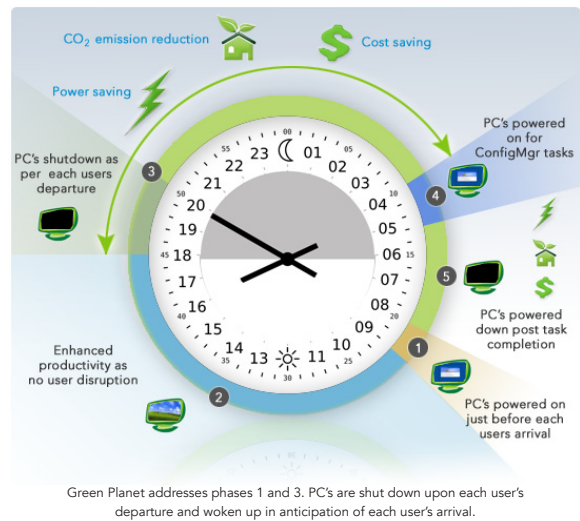
The Green Planet™ extension builds upon Adaptive Companion's PC power and configuration management abilities to facilitate a collaborative approach to successful power management in the enterprise:

- Identify power conservation opportunities
- Collaborate with end-users, establish optimal policies
- Drive adoption through increased end-user awareness
- Save \$25 - \$75 per PC annually
- Report on tangible savings by department and location

Benefits

Successful PC Power Management

- Know where and when to conserve energy
- Choose degree of administrative and user control
- Increase end-user awareness and engage users who waste the maximum energy



- Maximize savings through custom work and vacation schedules

Reduce TCO of PC's

- Tangible cost savings: \$25 - \$75 per PC
- Reduce systems management cost
- Reduce cooling costs

Be Socially Responsible

- Reduce energy use and related carbon emissions

Increase End-user Productivity

- End-users are not disturbed by updates during business hours
- PC's are awoken in anticipation of user arrival
- End-users can wake up office PC's remotely

Integration and Deployment Features

Tightly Integrated with ConfigMgr 2007 and SMS 2003.
Work from within the MMC.

Easy to Deploy: Point and click. No dependencies.

Identify and Harvest Power Saving Opportunities

Green Planet helps identify idle energy on a group or location basis enabling harvesting of maximum energy and cost savings. It does so by identifying:

- Keyboard and mouse activity
- RDP and terminal sessions
- File share access
- ConfigMgr activity
- Critical applications running

A PC left on without any of the above activities represents a power saving opportunity.

Collaborate to Establish Optimal Policies

Corporate power management policy can range from rigid to flexible, suiting your unique needs. Administrators can set blanket policies or can suggest policies and allow users to modify them within established limits.

Visibility on End-User Behavior

Users can configure preferences within allowed limits:

- Power options setting during work hours
- Power options settings post work hours
- Daily work schedule
- Custom vacation schedule
- Wake computer for start of work
- Automatically turn computer off after work
- Action to be taken on pressing the power button

Real-time policy updates to a PC or a collection

Power Management Adoption

Increased End-User Awareness

Client interfaces provides information on uptime, power states, wasted energy, cost savings, CO₂ emissions.

Increased End-User Participation

- Opt-in and out of power savings during or after work

- Configure custom policy as per work patterns
- Edit application exception list, PC will not shutdown if these applications are running
- Defer shutdown or choose from available power states
- Wake computer for start of work
- Data is automatically saved before shutdown

Save Money and PC Energy

Centrally power down PC's, on schedule or instantly, to any state desired - Off, hibernate, sleep, log off, restart or lock.

Detailed Web Reporting

Collect reporting metrics on an hourly or daily basis

- Extendable, schema published
- Power saving opportunities across groups and locations, usage baseline
- Actual energy usage, CO₂ emission and kWh reduction and cost savings per machine and group
- Comparison across machines, groups and locations
- Applications causing insomnia

System Requirements

Microsoft Windows Server 2003/2008, Windows 7, XP , Vista

Microsoft SQL Server 2000, 2005

About Adaptiva

Adaptiva™, a Microsoft Gold Partner, extends Microsoft's Configuration Manager and Systems Management Server to provide PC power and configuration management solutions.

Our solutions help organizations reduce the impact of desktop computing on the environment while improving manageability of distributed Windows environments.

Adaptiva has 500,000+ seats deployed and is trusted by over 80 customers in 11 countries.

Learn more at www.adaptiva.com.



www.adaptiva.com
15520 160TH AVE. NE Woodinville,
WA 98072 Tel: +1 425-823-4500

