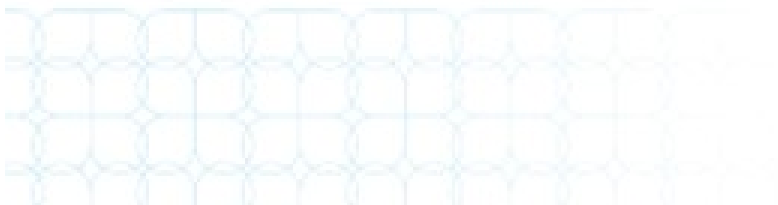


Allsup Disability Study: Income at Risk

Examining income risk factors for people with disabilities

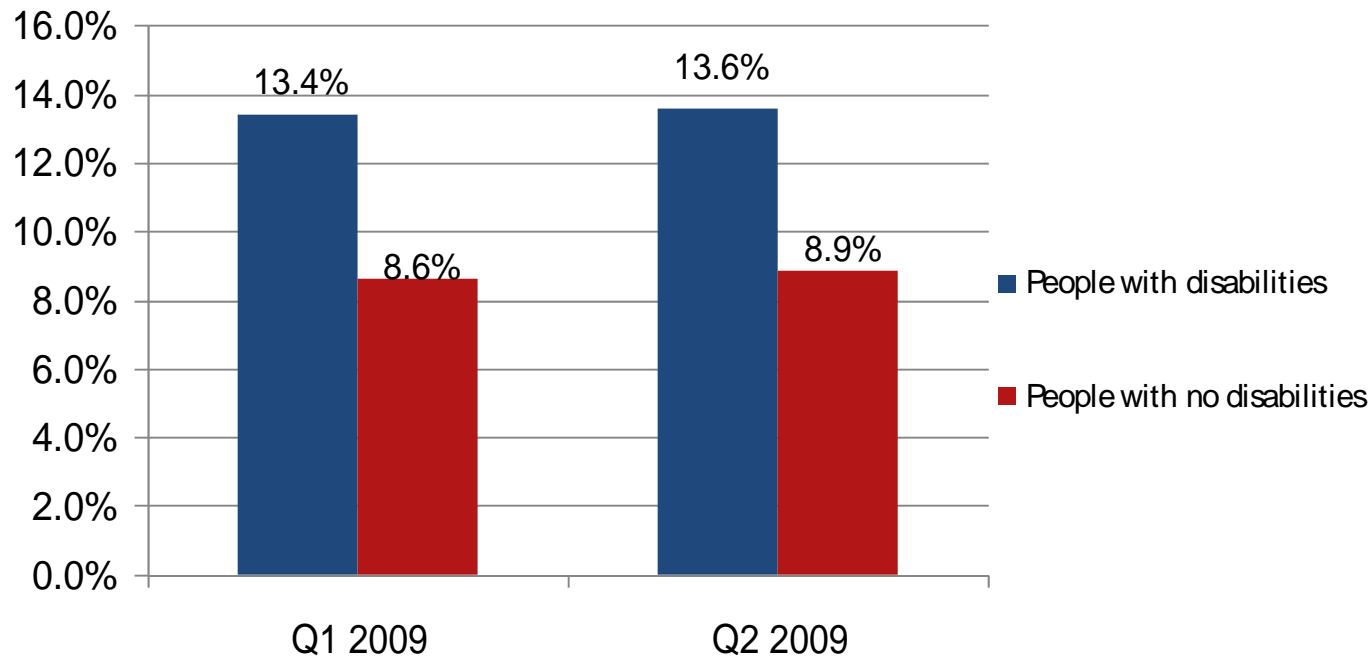
Second Quarter Report
July 2009



Allsup Disability Study: Income at Risk

The unemployment rate for people with disabilities is significantly higher than for those with no disabilities.

Unemployment rates



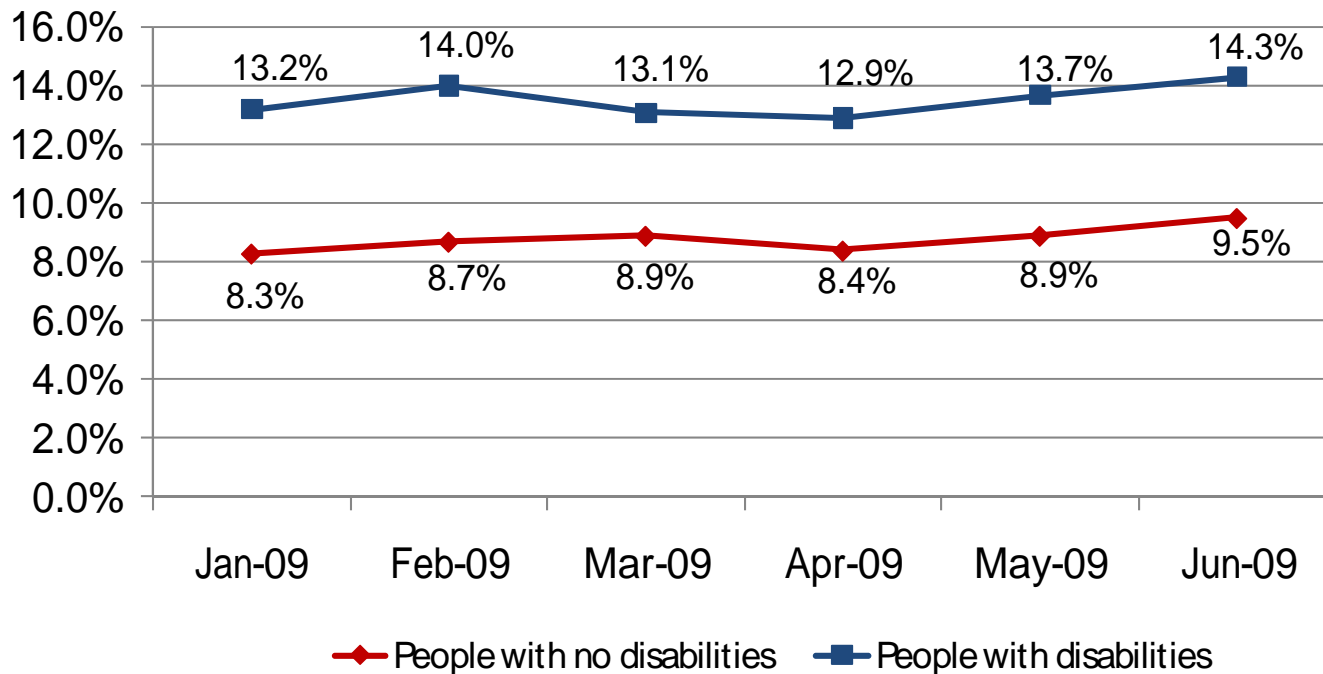
Unemployment rates for people with disabilities and those with no disabilities continued to climb. The unemployment rate for people with disabilities averaged 13.6 percent for the second quarter 2009, compared to 8.9 percent for people with no disabilities. People with disabilities experienced an unemployment rate 53 percent higher than people with no disabilities in the second quarter of 2009.

Source: Allsup analysis based on Bureau of Labor Statistics data; not seasonally adjusted and includes those 16 and older.

Allsup Disability Study: Income at Risk

The unemployment rate for people with disabilities is significantly higher than for those without disabilities.

Unemployment rates



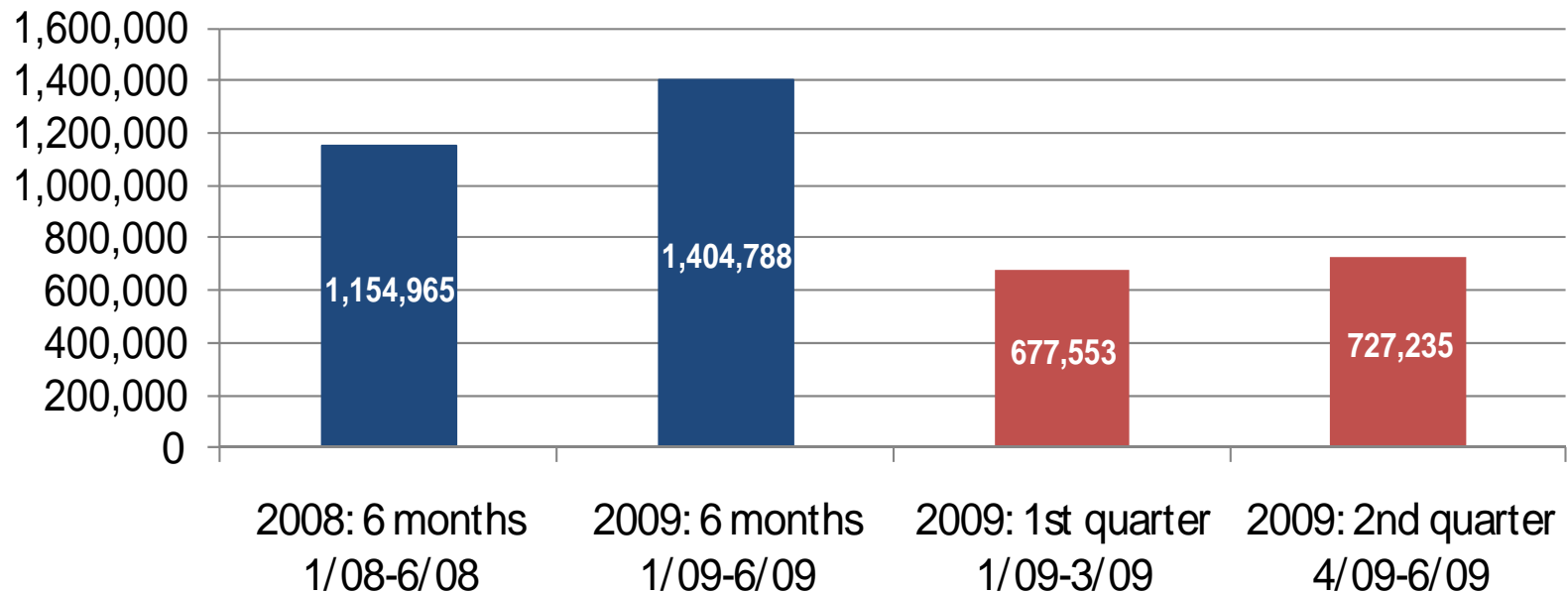
Over the second quarter 2009, people with disabilities, on average, had an unemployment rate 53 percent higher than those with no disabilities. For the month of June, both people with disabilities and those with no disabilities recorded the highest monthly unemployment rates for the year to date.

Source: Allsup analysis based on Bureau of Labor Statistics data; not seasonally adjusted and includes those 16 and older.

Allsup Disability Study: Income at Risk

Social Security Disability Insurance applications increased 22 percent in first six months of 2009 compared to the same period in 2008.

SSDI applications



The number of people applying for Social Security Disability Insurance benefits climbed by 22 percent when comparing the first six months 2008 to the first six months 2009. The number of applications in 2009 rose 7 percent from the first quarter to the second quarter.

Source: Allsup analysis based on Social Security Administration data.

Allsup Disability Study: Income at Risk

Background information

About Allsup:

Allsup, Belleville, Ill., is a leading nationwide provider of Social Security disability, financial and Medicare-related services to people with disabilities. Celebrating its 25th anniversary in 2009, Allsup has helped more than 120,000 people receive their entitled Social Security Disability Insurance and Medicare benefits. Allsup employs more than 580 professionals who deliver services directly to consumers and their families, or through their employers and long-term disability insurance carriers. For more information, visit www.Allsup.com.

Allsup Disability Study:

Second quarter 2009: <http://www.allsup.com/Portals/4/allsup-study-income-at-risk-q2-09.pdf>

First quarter 2009: <http://www.allsup.com/portals/4/allsup-study-of-income-at-risk.pdf>

Source materials:

Bureau of Labor Statistics, <http://www.bls.gov/cps/cpsdisability.htm>

Social Security Administration, <http://www.ssa.gov/OACT/STATS/dibStat.html>

Allsup contacts:

Dan Allsup, (800) 854-1418 ext 5760, djallsup@allsupinc.com

Mary Jung, (773)429-0940, mtjung@msn.com