



OSCOR *Blue*

TSCM Spectrum Analyzer
24GHz and 8GHz models available

U.S. PATENTS: 6,397,154; 7,058,530
Additional Patents Pending





OSCORA *Blue*

TSCM Spectrum Analyzer

Need speed? The OSCORA Blue TSCM Spectrum Analyzer sweeps 24GHz in 1 second quickly detecting electronic surveillance devices.

Built-in auto switching antenna system up to 24GHz (depending on model) means no extra antennas or cables required.

Portable (only 8lbs/3.6kg) quickly locates and analyzes transmitters.



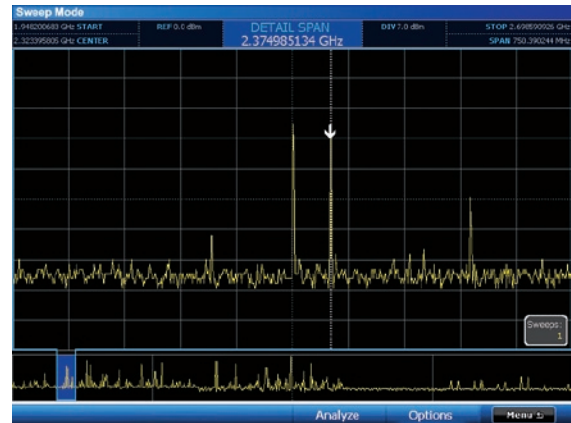
Built-in Auto-Switching Antenna System

The OSCOR Blue includes an integrated Auto-Switching Antenna System covering 100kHz to 24GHz or 100kHz to 8GHz (depending on model)

BUILT-IN 10dB PRE-AMP Improves receiver sensitivity

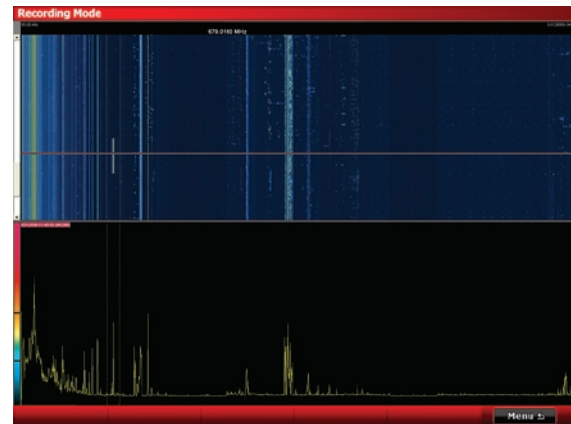
Trace Analysis for Rapid Detection of Sophisticated Transmitters

- 1 **SWEEPS 24GHz IN LESS THAN 1 SECOND** at 12.2kHz resolution (approximately 2,000,000 spectrum measurements per second)
- 2 **QUICKLY IDENTIFIES LOCALIZED RF ENERGY TRANSMISSIONS OF ALL TYPES OF MODULATION**
- 3 **INVESTIGATES AND ZOOMS** in on signals in the spectrum without interrupting full spectrum sweep (24GHz or 8GHz depending on model), assuring that no signals are missed
- 4 **MAPS RF TRACES** - Patented Trace Analysis is built into functionality. Reference and target traces are quickly captured, stored, and compared for complete RF Mapping solution
- 5 **GENERATES SIGNAL LISTS** - Proprietary algorithm quickly produces signal list from captured traces. Provides rapid comparison of signals from room to room



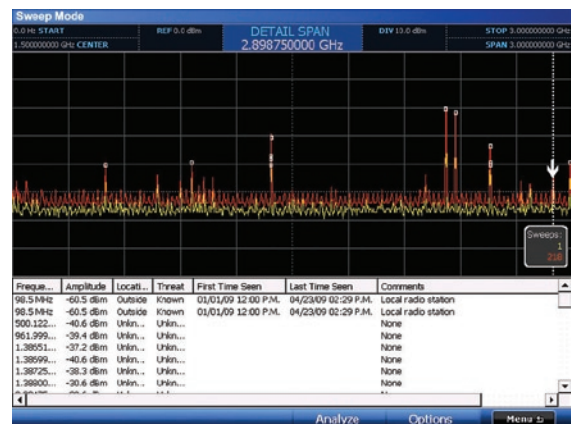
Waterfall Trace Sequence Recorder

- 1 **CAPTURES AND RECORDS SIGNAL ACTIVITY IN A PEAK TRACE** over time for historical analysis of transmissions
- 2 **CAPTURES PEAK TRACES AT 24GHz PER SECOND**, traces storage at a rate of 5 second intervals, storage resolution 12.2kHz
- 3 **RECORDS FULLY DETAILED TRACE DATA** - Reconstruct spectrum and then zoom and pan freely within recorded spectrum (recorded spectrum not restricted to screen capture resolution)



Signal Analysis, Classification, and Location

- 1 **REAL-TIME FREQUENCY SPECTRUM UPDATE AND DISPLAY WHILE DEMODULATING**
- 2 **PATENTED DSP CORRELATION** for analog signals
- 3 **SIGNAL RANGING** shows distance to analog transmitters for quickly locating threatening signals
- 4 **DIGITAL SIGNALS** easily located based on RSSI level change and near field locating function



Built-in Suite of Demodulators

AUDIO DEMODULATORS

- 1 FM wideband
- 2 FM narrowband
- 3 AM wideband
- 4 AM narrowband
- 5 Sub-carrier
- 6 Single Sideband

VIDEO FORMATS

- 1 NTSC, PAL, SECAM
- 2 AM or FM demodulation
- 3 + or - synchronization pulse

IF BANDWIDTHS

- 1 Audio: 200kHz, 15kHz, 6kHz, 2kHz
- 2 Video: 13.5MHz, 6.25MHz

OSCOR Blue

TSCM Spectrum Analyzer



TECHNICAL SPECS (subject to change)

OSCOR Blue ADVANTAGES

DIGITAL SPECTRUM ANALYZER

DESIGNED SPECIFICALLY FOR COUNTERSURVEILLANCE

EXTREMELY FAST SWEEP TIME

24GHz IN LESS THAN 1 SECOND (depending on model)

INTEGRATED AUTO-SWITCHING ANTENNA SYSTEM

50kHz to 8GHz OR 24GHz (depending on model)

AUTOMATIC PROGRAMMABILITY

CONTINUOUSLY SCANS, STORES SIGNALS AND TRACES,
AND DETECTS THREAT SIGNALS

ENHANCED TRACE ANALYSIS

DETECTS SOPHISTICATED DEVICES SUCH AS FREQUENCY
HOPPING AND BURST/PACKET TRANSMITTERS

SIGNAL AND TRACE DATABASE

PROVIDES STORAGE AND RECALL OF DETECTED SIGNALS
AND SPECTRUM TRACES

AUDIO ANALYSIS MODE

PROVIDES SUITE OF DEMODULATORS

VIDEO DEMODULATOR AND MONITOR

PROVIDES VIEWING OF COVERT VIDEO TRANSMITTERS

ACOUSTIC CORRELATOR

CLASSIFIES THREATENING SIGNALS

EASILY LOCATES THREATS

PORTABLE DESIGN, ALLOWS FOR THREAT LOCATION

COMPLETE PACKAGE OF SWEEP EQUIPMENT

WEIGHS 8LBS (3.6kg), INCLUDING ANTENNAS

RF SYSTEM

Frequency: 8GHz Model = 50kHz to 8GHz

24GHz Model = 50kHz to 24GHz

Displayed Average Noise Level (DANL) (25kHz Resolution Bandwidth)

Without Preamp = -100dBm

With Preamp = -110dBm

SSB Phase Noise at 10kHz:

(50kHz - 14GHz) = -80dBc/Hz

(14 - 24GHz) = -74dBc/Hz

Sweep Speed:

> 24GHz/second

Preamp: DC-6GHz = 10dB

Attenuation: DC-24GHz = 0dB, -10dB, -20dB, -30dB

Dynamic Range:

Min/Max Range: 90dB

SFDR: 80dB

AUDIO SYSTEM

Demodulation Types: AM, FM

Filters Sizes: 13.5MHz, 6.25MHz, 200kHz, 12.5kHz, 6kHz, 2kHz

Subcarrier Filters: 6.25kHz, 12.5kHz, 200kHz, 1.3MHz

Headphone Output (low leakage headphones included)

Built-in Speakers

VIDEO SYSTEM

Formats: NTSC, PAL, SECAM

Demodulation: AM, FM

Sync Pulse: + or -

Subcarrier Filters: 6.25kHz, 12.5kHz, 200kHz, 1.3MHz

ANTENNA SYSTEM

Built in Auto Switching Antenna System:

Frequency: 8GHz Model = 100kHz to 8GHz

24GHz Model = 100kHz to 24GHz

INPUTS/OUTPUTS

Aux RF In: 50kHz to 8GHz

IF Out: 75MHz @ 30MHz BW

Baseband Out: 100Hz - 6MHz

Expansion: Future Expansion Port

USER INTERFACE

Integrated Touch Screen with 8.4" Display

Soft Keys and Rotary Optical Encoder

USB Port (A type): for peripherals (Keyboard, Mouse)

Line In

POWER SUPPLY

Universal Power Supply included: 100-240VAC, 50-60Hz

Removable Battery: Rechargeable Lithium ion, 2-3 hour runtime

MECHANICAL

Dimensions: 12.6in x 11.2in x 3in

(32cm x 28.4cm x 7.6cm)

Weight with Battery: 8 lbs (3.6 kg)

Case Dimensions: 5.4in x 14.9in x 19.5in

(13.7cm x 37.8cm x 49.5cm)

Loaded Case Weight: 21.0 lbs (9.5kg)

Operating Temperature: 0°C to +50°C



455 SECURITY DRIVE
ALGOOD TN 38506 USA

TEL +1 931.537.6032

800.824.3190 (US ONLY)

FAX +1 931.537.6089

www.research-electronics.com

