



BlueChip Consulting Group

Identity and Access Management—Datasheet

BlueVault Identity Manager (BIM) & BlueVault Account Manger (BAM)

- Provisioning/De-Provisioning Delegation
- Workflow Based Authorization
- Business Process Automation
- Low Cost Corp and/or LOB Solution
- Auditing & Compliance Reporting
- Identity Management Architecture
- Identity Aggregation and Synchronization

BlueChip Consulting Group (<http://www.bluechip-llc.com>) has built a deployment methodology and light weight Identity Management toolset.

BlueVault Enterprise Security solutions (<http://www.bluechip-llc.com/solutions/Pages/IAM.aspx>) help you save costs while quickly and effectively delegating application control without compromising corporate policies.

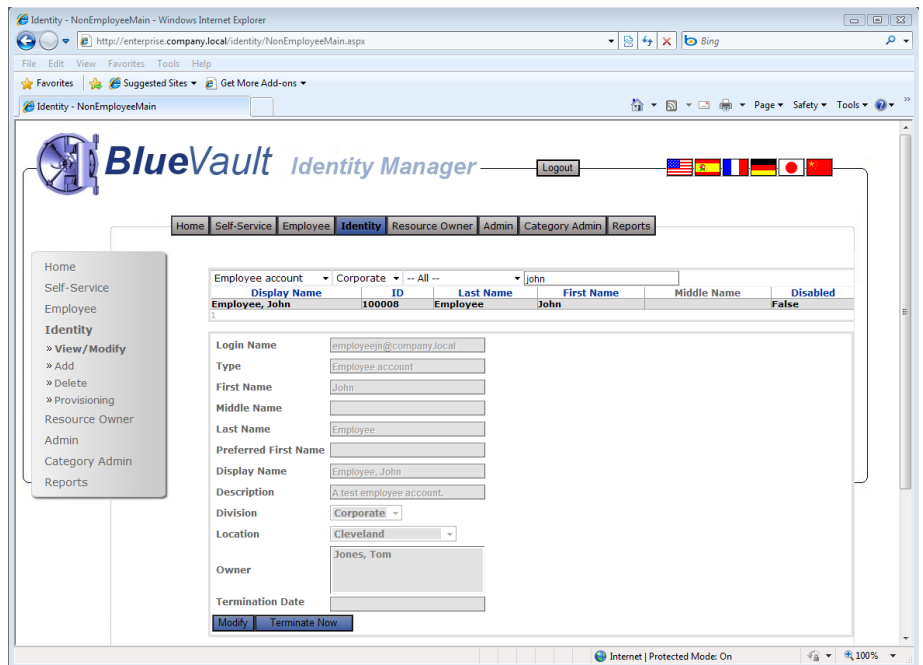
Let **BlueChip** identify your usage and design standards and help you ensure identities are consistent and manageable. Using an **Identity Management Architecture (IMA)** methodology and **Microsoft® ILM** extensions , we created a **Digital Identity Infrastructure** providing Corporate and Line-of-Business resources to employees, customers, partners, and suppliers.

Application Control **Back to the Business**

An Identity Management solution should be built for your unique **business** needs. However, the costs and complexity of custom solutions are simply overwhelming for most IT shops, let alone BUs. **BlueVault** Enterprise Security solutions are flexible foundations upon which organizations can build digital identity infrastructures.

Nothing revolutionary, right? **BlueVault Identity Manager (BIM) & BlueVault Account Manager (BAM)** both provide a solution to meet the unique requirements of **Marketing, Human Resources, Procurement, other business units, as well as the IT organization** through a sleek Web Portal front-end while assuring adherence to even the most stringent, global sets of policies. **BIM & BAM** delegate account administration of Business apps back to where they belong; the Line of Business owner, **all at a fraction of the costs of most enterprise solutions.**

- ◆ **Process-to-Identity Matrix**—relates all Identities to the Business Processes that they support in a visual map
- ◆ **Streamline Critical Identity Processes**—create workflows to address Process-to-Identity requirements via automation,



- ◆ **Business Function Matrix**—document the structure of your enterprise and define and map the business functions to the major organizations of the enterprise
- ◆ **Identity Process Inventory**—document all Business related drivers / tasks associated with each business function defined
- ◆ **Identity Data-Source Inventory**—discover and document all Identity Data Repositories



Security Solutions
Advanced Infrastructure Solutions
Networking Infrastructure Solutions
Information Worker Solutions



BlueVault— High-Value, Low-Cost, Enterprise Security

BlueVault Identity
Manager (BIM)

BlueVault Account
Manager (BAM)

Value Proposition

BlueChip has created a *low-cost* solution that *delegates* our client's administration of their Digital Identities. Through integration with **Microsoft SharePoint**, **Microsoft ILM 2K7** and **Microsoft SQL Server**, **BlueVault Identity Manager (BIM)** is a comprehensive, central account provisioning tool governing access to ALL global Digital Identity stores and associated applications that use these Identities. All employee and non-employee identities are managed via this central tool.

BIM is a strategic, enterprise-wide, web-based, automated Identity and Access Management solution that leverages policies via workflow management activities, helping enforce corporate standards compliance.

User self-service—with associated workflows

- Password change / reset (Challenge / Response)
- Profile Updating
- Self-enrollment – request access to a managed resource

HR functionality—with associated termination workflow

- Employee / Applicant ACD (add, change, delete)
- Applicant Promotion Capability
- Workflow View
- **Manager / Supervisor access**
- Manage direct reports or owned non-employee accounts
- Request non-employee accounts
- Request Identity provisioning / de-provisioning
- "Emergency Disable" - One click owned account disablement

Resource Owner

- Account provisioning / de-provisioning to owned resources

Site Administrators

- Distributed Identity Administration by "Site"

Portal Administrators

- Full administrative functionality for configuration and management of **BIM**

Auditing and Compliance reporting

- Change history of access provisioning
- Reporting Subscription service

Features & Functionality

Our **BlueVault Account Manager (BAM)** offering is a Microsoft SharePoint based portal and is essentially a light version of our **BIM** offering. If your organization manages extranet applications and related account provisioning and is looking for a central extranet directory, the **BlueVault Account Manager (BAM)** can assist.

Central IT can grant application owners necessary rights to send an automated email invitation to external users which grants them the ability to self-register and self-administer their own credentials.

External Identity Administration for LOB Applications

- Provide self-service ID registration for external application users; 3rd-parties, customers, suppliers, distributors, other external vendors that require access to extranet applications and resources
- Enable self-service password reset capabilities
- Provide secure access to applications and data
- Provide comprehensive reports detailing Identity's access and how/when access was granted
- "Resource Owners", as defined by the **BAM** portal, manage & administrate Access security groups
- "Resource Owners", can delegate Access security group authority to other users



BlueVault

High-Value, Low-Cost Enterprise Security

Tailor your Identity and Access Management solution to meet your specific needs. Call **BlueChip** today.

BlueChip Consulting Group

6050 Oak Tree Boulevard
Suite 310
Independence, Ohio 44131

Phone: +1.216.503.6001
E-mail: info@bluechip-llc.com



Security Solutions
Advanced Infrastructure Solutions
Networking Infrastructure Solutions
Information Worker Solutions