

SSI offers its Model Q85 Quad™ shredders to process materials including:

- Mixed Waste
- Passenger tires
- Plastics
- Steel drums
- Wood/Pallets
- Fibers/Textiles/Foam
- Baled and bulky materials
- Paper/Cardboard
- Hazardous waste
- Organic waste
- Metals
- Electronic scrap (consumer grade)
- and more...

ELECTRIC OR HYDRAULIC

Q55 shredders are available in both electric and hydraulic versions to meet your specific processing requirements.

FACTORS TO CONSIDER:

Electric drive when processing:

- Sorted, uniform materials.
- Conveyor fed or metered materials.
- Materials containing limited non-shreddables.

Hydraulic drive when processing:

- Mixed or unsorted materials.
- Batch fed materials.
- Materials containing non-shreddables.
- Materials requiring enhanced particle size or throughput control.
- Installations requiring optional reduced voltage starting.



SSI ADVANTAGES

High-torque, low-speed design

Delivers multipurpose shredding with greater on-line reliability and lower maintenance requirements than other technologies.

Auto reversal feature

Protects against overfeeding and damage by non-shreddables.

Patented ACLS - Advanced Cutter Locking System™

Eliminates daily requirement to tighten cutter stack while improving shredder performance and cutter life.

Shock load protection feature

Protects shredder and drive components. Electric version offers patented SSP - Severe Shock Protection™ controlled torque coupling. Hydraulic version utilizes multiple relief valves.

Proprietary bearing protection

Isolates bearings from cutting chamber contamination and protects against bearing failure.

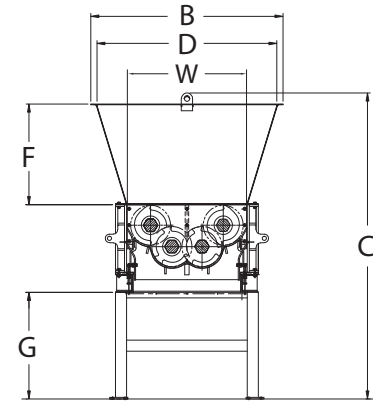
Convertible drive

Versatile design accommodates electric or hydraulic drive. Optional conversion package available.

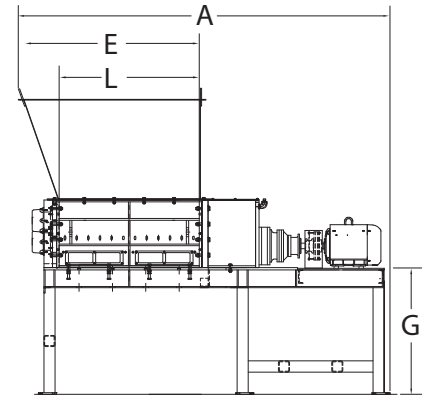




Standard Cutting Chamber (W x L) 54" x 52" (1,380 mm x 1,315 mm)
 Optional length 63" (1,608 mm)



END VIEW
SHREDDER SECTIONED FOR CLARITY



SIDE ELEVATION VIEW

SHREDDER	MODEL Q85ED(52)	MODEL Q85HD(52)
Drive	Electric	Hydraulic
Number of Electric Motors	Two	Two (HPU)
HP	120 HP (90 kW)	150 HP (112 kW)
HP Range	120-150 HP (90-112 kW)	120-150 HP (90-112 kW)
Voltage	460/3/60	460/3/60
Voltage Options	Many - Consult Factory	Many - Consult Factory
Autochop Feature	N/A	Included
Shock Load Protection	Yes (SSPTM)	Yes (Multiple Relief)
Cutter Thickness (nominal)	2" (50 mm)	2" (50 mm)
Cutter Diameter	18.1" (460 mm)	18.1" (460 mm)
Cutter Material	4140 HT	4140 HT
Shaft Diameter	6" (152 mm)	6" (152 mm)
Cutting Chamber (WxL)*	54" x 52" (1,380 mm x 1,315 mm)	54" x 52" (1,380 mm x 1,315 mm)
Machine Length (A)*	166" (4,210 mm)	119" (3,024 mm)
Machine Width (B)	86" (2,180 mm)	86" (2,180 mm)
Machine Height (C)	133" (3,370 mm)	138" (3,499 mm)
Machine Weight	29,500 lbs (13,400 kg)	24,500 lbs (11,000 kg)
Hopper Opening (DxE)*	81" x 79" (2,055 mm x 2,010 mm)	81" x 79" (2,055 mm x 2,010 mm)
Hopper Height (F)	45" (1,150 mm)	45" (1,150 mm)
Stand Height (G)	48" (1,220 mm)	48" (1,220 mm)
HPU Configuration	N/A	Open Loop
HPU Dimensions	N/A	7.4' x 7.2' x 7.4' (2.2m x 2.3m x 2.3m)
HPU Weight	N/A	7,200 lbs (3,267 kg)

Electrical controls including motor starters, PLC, and operator interface are supplied in NEMA 4 enclosures

* Dimensions apply to the Q85 with standard 52" (1,315 mm) cutting chamber length.

SSI offers a full range of energy-efficient electric and hydraulic shredders as well as custom units to meet all processing requirements.

Note: Illustrations, specifications and descriptions presented reflect standard product at time of publication and are subject to change without notice. Dimensions are approximate. Photographs may include optional equipment and accessories. SSI offers compactors, balers, granulators, conveyors and classifiers as well as specialized motors, stands, hoppers, and mobile configurations. Consult factory to discuss your processing needs.