

**QUAD**<sup>™</sup>  
by **SSI**

4 shafts + One pass =

## SMALL, UNIFORM PARTICLE SIZE

If you need a shredder that can process a wide range of materials and give a consistently small output, SSI's Quad™ shredder is what you've been looking for.

Four shafts in the Quad shred and recirculate material within the machine until it is sized to pass through a removable screen set immediately below the cutters.

SSI Quad shredders employ proven low-speed, high-torque technology. They have a small footprint and create well-liberated, uniform products at high production rates, without sustaining damage from metals and other hard materials.



## WHY use a Quad?

- Low-speed benefits—low noise, low dust, low heat generation, low operation and maintenance costs
- Robust, high-torque shearing technology designed to process tough, compressible materials such as metals, carpet, tires, etc.
- “Self-cleaning” cutting chamber and screen design
- Ability to size a wide variety of difficult materials not usually compatible with screening—i.e. film, plastics, textiles, sludges, etc.
- Design facilitates liberation of commingled materials, maximizing recovery
- Unique removable screens (hole sizes from 3/4" - 8", depending on application)
- Uniform particle size
- Low horsepower, energy efficient
- Bulk feed capability
- Small footprint, simple design

SSI's Quad shredders are the ideal solution for:

- **Alternative Fuel/Refuse-Derived Fuel** – MSW, industrial waste, wood, paper, tires, plastics, carpet, textiles, etc.
- **Material Separation & Recycling** – Electronics scrap, plastics, aluminum, UBC's, steel drums, auto shredder residue, wood, etc.
- **Product/Security Destruction** – Paper/documents, hard drives, off-spec or out-dated goods, pharmaceuticals, electronics, plastic parts, etc.
- **Waste Treatment/Alternative Disposal** – Medical waste, radioactive materials, organics, paper fibers, MSW, industrial waste, etc.

## QUAD models



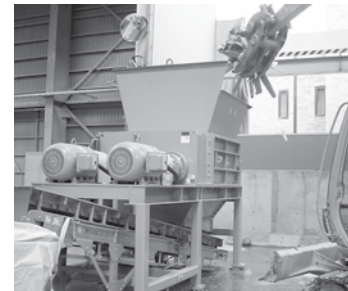
### Q55

Cutting chamber (W x L)	36" x 31" (900mm x 785mm)
Hopper opening (W x L)	56" x 51" (1430mm x 1290mm)
Optional length	40" (1025mm)
HP Range	50 - 60 (38-45kW)
Screen hole size	3/4" - 6" (20-150mm)



### Q70

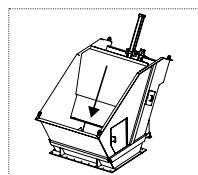
Cutting chamber (W x L)	44" x 40" (1125mm x 1025mm)
Hopper opening (W x L)	72" x 67" (1825mm x 1700mm)
Optional length	52" (1315mm)
HP Range	80 - 100 (60-75kW)
Screen hole size	3/4" - 6" (20-150mm)



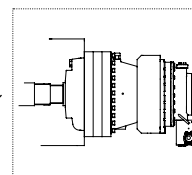
### Q85

Cutting chamber (W x L)	54" x 52" (1380mm x 1315mm)
Hopper opening (W x L)	81" x 79" (2055mm x 2010mm)
Optional length	63" (1610mm)
HP Range	120 - 150 (90-113kW)
Screen hole size	1" - 6" (25-150mm)

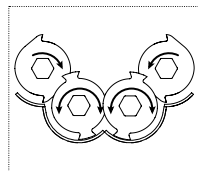
## DESIGN features



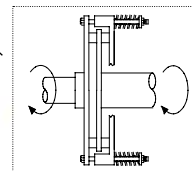
**HOPPERS**  
Application-specific feed hoppers available, including patented ram feed assist.



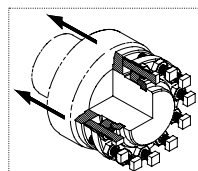
**MULTIPLE DRIVE CONFIGURATIONS**  
Electric, hydraulic and SmartDrive™ options available to suit specific needs.



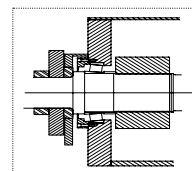
**SELF-CLEANING DESIGN**  
The lower and upper shafts sweep each other as well as the screen, reducing material build-up.



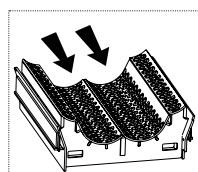
**PATENTED SSP™**  
SSI's "Severe Shock Protection" system protects the drive system from damage during an event that instantaneously stops shredder shafts. (electric models only)



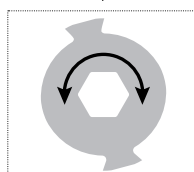
**PATENTED ACLS™**  
SSI's "Advanced Cutter Locking System" maintains a tight cutter stack, minimizing maintenance requirements and prolonging cutter life.



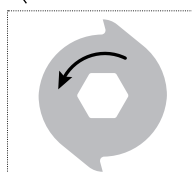
**SEAL & BEARING PROTECTION**  
Proprietary "multiple-barrier" system, including a combination of conventional and labyrinth seals to prevent contamination.



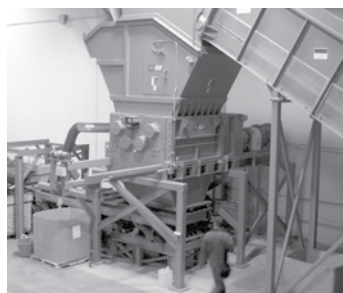
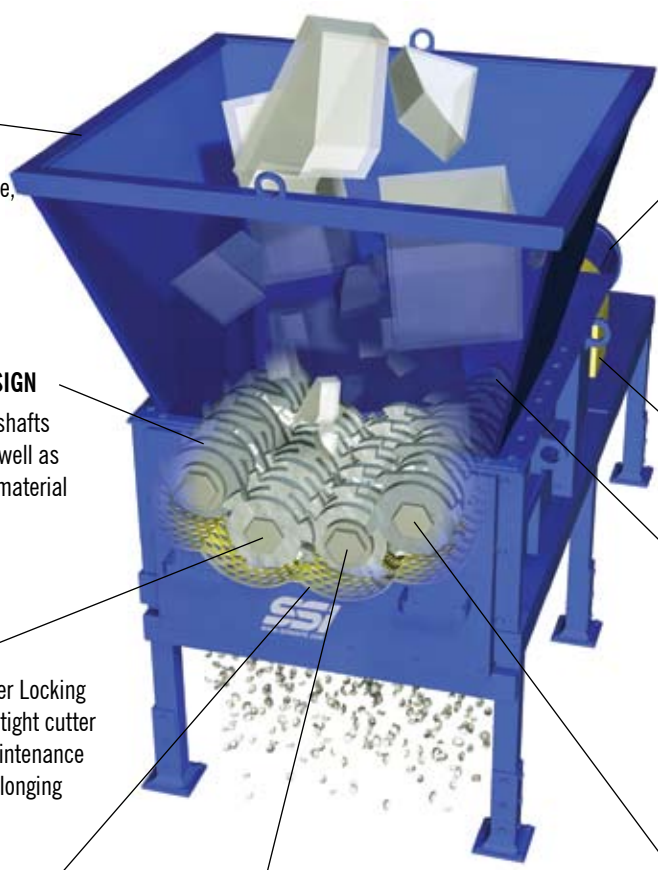
**REMOVABLE SCREEN**  
The "slide-out" screen can be easily removed and replaced, allowing users to change output sizes.



**LOWER CUTTERS**  
Bi-directional cutters process material when moving in either direction, eliminating "lost production" during shaft reversals.



**UPPER CUTTERS**  
These pierce-point cutters facilitate recirculation of shredded material and increase the number of cuts per shaft revolution. More cutting action = more throughput.



### Q100

Cutting chamber (W x L)	62" x 63" (1565mm x 1610mm)
Hopper opening (W x L)	86" x 87" (2190mm x 2210mm)
Optional length	75" (1900mm)
HP Range	250 - 400 (188-300kW)
Screen hole size	1 1/4" - 8" (32-200mm)

### Q140

Cutting chamber (W x L)	82" x 75" (2075mm x 1905mm)
Hopper opening (W x L)	113" x 108" (2875mm x 2745mm)
Optional length	98" (2485mm)
HP Range	400 - 600 (300-450kW)
Screen hole size	2" - 8" (50-200mm)

### Q160

Cutting chamber (W x L)	101" x 101" (2560mm x 2555mm)
Hopper opening (W x L)	133" x 120" (3380mm x 3050mm)
Optional length	n/a
HP Range	600 - 1,000 (450-750kW)
Screen hole size	2" - 8" (50-200mm)

# WHAT NEEDS SHREDDING?

Obviously your goal isn't to be the proud owner of a shredder; it's to run a successful business. A shredder is just a tool. SSI's goal is to help you pick the right tool. To do this well, we need to talk to you about your goals and needs. When you call, here are some of the things we'll ask:



WHAT DO YOU NEED TO SHRED?

WHAT IS YOUR DESIRED PRODUCTION RATE?

HOW WILL THE SHREDDER BE FED?



WHAT PARTICLE SIZE DO YOU NEED?

WHAT IS THE END USE OF THE SHREDDED MATERIAL?

Landfill? Alternative Fuel? Recycling? Manufacturing?



**SSI Shredding Systems, Inc.**  
9760 SW Freeman Drive  
Wilsonville, Oregon 97070 USA

toll free (800) 537-4733  
phone (503) 682-3633  
fax (503) 682-1704

[www.ssiworld.com](http://www.ssiworld.com)  
email [sales@ssiworld.com](mailto:sales@ssiworld.com)

© Copyright 2007, SSI Shredding Systems, Inc. SSI, Quad, Advanced Cutter Locking System, ACLS, SmartDrive, Auto-Chop, Severe Shockload Protection, SSP, and the phrase "What needs shredding?" are trademarks of SSI Shredding Systems, Inc. Illustrations, specifications and descriptions presented reflect standard product at time of publication and are subject to change without notice. Dimensions are approximate. Photographs may include optional equipment and accessories.